



Catalog
Academic Year 2016-2017

Baylor College of Medicine's Mission, Vision and Values

College's Mission

Baylor College of Medicine is a health sciences university that creates knowledge and applies science and discoveries to further education, healthcare and community service locally and globally.

College's Vision

Improving health through science, scholarship and innovation

College's Values

Respect

- ❖ Value others and treat them with courtesy, politeness and kindness
- ❖ Promote and support diversity, inclusion and equity
- ❖ Encourage civil dialogue that considers diverse opinions and ideas

Integrity

- ❖ Interact with honesty, consistency and transparency
- ❖ Operate in ways that demonstrate ethical behaviors
- ❖ Foster personal accountability to build trust

Innovation

- ❖ Cultivate creative ideas and unique talents across the organization
- ❖ Embrace a culture of continuous improvement
- ❖ Inspire the creation and application of new knowledge

Teamwork

- ❖ Sustain a culture that values collaboration
- ❖ Communicate openly to enhance understanding
- ❖ Establish effective partnerships

Excellence

- ❖ Promote the highest standards of safety, quality and service
- ❖ Strive to excel in every aspect of our mission
- ❖ Support an environment that inspires the best from our people



Catalog
Academic Year 2016-2017

Baylor College of Medicine is committed to a safe and supportive learning and working environment for its learners, faculty and staff. College policy prohibits discrimination on the basis of race, color, age, religion, gender, gender identity or expression, sexual orientation, national origin, veteran status, disability or genetic information.

Harassment based on any of these classifications is a form of discrimination and also violates College policy (02.2.25, 02.2.26) and will not be tolerated. In some circumstances, such discriminatory harassment also may violate federal, state or local law.

Baylor College of Medicine fosters diversity among its students, trainees, faculty and staff as a prerequisite to accomplishing our institutional mission, and setting standards for excellence in training healthcare providers and biomedical scientists, promoting scientific innovation, and providing patient-centered care.

Diversity, respect, and inclusiveness create an environment at Baylor that is conducive to academic excellence, and strengthens our institution by increasing talent, encouraging creativity, and ensuring a broader perspective. Diversity helps position Baylor to reduce disparities in health and healthcare access and to better address the needs of the community we serve. Baylor is committed to recruiting and retaining outstanding students, trainees, faculty and staff from diverse backgrounds by providing a welcoming, supportive learning environment for all members of the Baylor community.

Catalog
Academic Year 2016-2017

SCHOOL OF HEALTH PROFESSIONS

Our Mission

The School of Health Professions administers exemplary educational programs driven by continuous quality improvement to deliver an exceptionally prepared healthcare workforce grounded in evidence-based care and competent interprofessional practice.

Our Vision

The BCM School of Health Professions will be the leader in developing a diverse workforce that will transform healthcare through science, scholarship, and innovation.

Our Values

Respect

Value others and treat them with courtesy, politeness and kindness

Promote and support diversity, inclusion and equity

Encourage civil dialogue that considers diverse opinions and ideas

Integrity

Interact with honesty, consistency and transparency

Operate in ways that demonstrate ethical behaviors

Foster personal accountability to build trust

Innovation

Cultivate creative ideas and unique talents across the organization

Embrace a culture of continuous improvement

Inspire the creation and application of new knowledge

Teamwork

Sustain a culture that values collaboration

Communicate openly to enhance understanding

Establish effective partnerships

Excellence

Promote the highest standards of safety, quality and service

Strive to excel in every aspect of our mission

Support an environment that inspires the best from our people



Catalog
Academic Year 2016-2017

Description of Programs

Doctor of Nursing Practice, Nurse Anesthesia

The Baylor College of Medicine Doctor of Nursing Practice Program-Nurse Anesthesia produces future generations of professional nurse anesthetists who are leaders in clinical practice, as well as healthcare research, education, and policy. The program is designed in two tracks including a BSN-DNP track for RNs desiring to become CRNAs and a MS-DNP track for masters-prepared CRNAs desiring to obtain the DNP degree.

Physician Assistant Program

Our program mission is to educate physician assistants who will provide excellent healthcare to individuals and communities in a broad range of settings. The core values embraced by the program's faculty include honesty, integrity, self-motivation, flexibility, lifelong learning, reflective practice, teamwork, and primary concern for the patient's welfare.

Orthotics and Prosthetics Program

The mission of the Orthotics and Prosthetics Program at Baylor College of Medicine is to provide the highest level of education through evidence-based teaching and curriculum design, integrated clinical residency, direct contributions to Orthotics and Prosthetics research, and collaboration with the local and national rehabilitative care community.

Students and faculty will adhere to the policies, procedures, and guidelines referenced within this Catalog.

Course Catalogs include an overview of BCM's health sciences mission and values (e.g., preamble), student handbooks (which detail expectations of students and obligations of the institution), course descriptions, and degree requirements for each academic year that are generated by, and specific to, each BCM school and its corresponding academic program(s).

Five years of archived catalogs are available online at www.bcm.edu/registrar

Table of Contents

• Student Policy Handbook	Page 5
• Course Descriptions	Page 42
• Degree Requirements	Page 78

Baylor
College of
Medicine

**Baylor College of Medicine
School of Allied Health Sciences**

Student Handbook



Revised December 29, 2016

Student Handbook

Baylor College of Medicine

School of Allied Health Sciences

As a student enrolled in the Baylor College of Medicine School of Allied Health Sciences' academic programs, you should be knowledgeable of the College's policies, rules, regulations, and administrative procedures that affect you. This Student Handbook provides guidelines and policies for all Allied Health students as well as specific information for your particular academic program. Students are responsible for all the information presented in this book.

While every effort has been made to verify the accuracy of information, Baylor College of Medicine reserves the freedom to change, without notice, degree requirements, curriculum, courses, teaching personnel, rules, regulations, tuition, fees, and any other information published herein. This publication is not to be regarded as a contract.

Further information can be obtained from personnel in the following offices:

Office of Student Services
Baylor College of Medicine
One Baylor Plaza
Cullen Bldg., Room 415A
Houston, Texas 77030
(713) 798-6950

School of Allied Health Sciences
Baylor College of Medicine
One Baylor Plaza, Mail Stop BCM115
DeBakey Bldg., Suite M108
Houston, Texas 77030
(713) 798-4613

Doctor of Nursing Practice Program
(Nurse Anesthesia)
Baylor College of Medicine
One Baylor Plaza, Mail Stop BCM115
DeBakey Bldg., Suite M108
Houston, Texas 77030
(713) 798-8650

Orthotics & Prosthetics Program
Baylor College of Medicine
One Baylor Plaza, Mail Stop BCM115
DeBakey Bldg., Suite M108
Houston, Texas 77030
(713) 798-3098

Physician Assistant Program
Baylor College of Medicine
One Baylor Plaza, Mail Stop BCM115
DeBakey Bldg., Suite M108
Houston, Texas 77030
(713) 798-3663

Baylor College of Medicine admits students of any race, sex, religion, marital status, sexual orientation, color, national or ethnic origin, disability, or age to all the rights, privileges, programs, and activities generally accorded or made available to students at the school. It does not discriminate on the basis of race, sex, religion, marital status, sexual orientation, color, national or ethnic origin, disability, or age, in administration of its educational policies, admissions policies, scholarship and loan programs, athletic and other school-administered programs.

Table of Contents

Section 1

BCM History and Mission	6
Diversity	6
Student Rights	6
Compact Between Teachers, Learners, and Educational Staff	6
Code of Conduct.....	8
Outside Speakers	8
Fundraising Policy	8
Distance Education Policy	8
School of Allied Health Sciences	
Mission.....	8
Definition of “Allied Health”	8
Governance	8
Accreditation	9
Administration, Faculty, and Staff.....	9

Section 2

Excerpts from the BCM School of Allied Health Sciences Academic & Administrative Policies, Procedures, and Operational Guidelines

Article 2. Academic Governance

2.1	Allied Health Education Executive Committee	12
2.2	Allied Health Curriculum Committee	12
2.3	Allied Health Student Promotions Committee	12
2.4	Allied Health Faculty Appointments and Promotions Committee	12
2.5	Program Executive Committees.....	12
2.6	Program Admissions Committees	12
	Organizational Chart: School of Allied Health Sciences	13

Article 5. Allied Health Students

5.1	Admissions	14
5.2	Non-discrimination Policy	14
5.3	Background Checks	14
5.4	Enrollment	15
5.5	Tuition and Fees.....	15
5.6	Falsification of Admission Application	15
5.7	Attendance	15
5.8	Attendance – Clinical Curriculum	15
5.9	Leave of Absence.....	15
5.10	Withdrawal from the College	16
5.11	Reinstatement of Student Previously Dismissed or Voluntarily Withdrawn.....	17
5.12	Credit Hour Assignment	17
5.13	Grading and Grading Policies	17
5.14	Transcripts.....	19
5.15	Student Records.....	19
5.16	Release of Information	20
5.17	Student Grievance Policy	20
5.18	Technical Standards for Admission and Graduation.....	21

Article 6. Student Services

6.1	Policy on Harassment	22
6.2	Students with Disabilities	23
6.3	Sexual Harassment and Sexual Violence	23
6.4	Academic Advising, Career Advising, Tutoring	24

Article 7. Student Wellness

7.1	Student Health Insurance	24
7.2	Personal Responsibility	25
7.3	Infection Control	25
7.4	Institutional Policy on AIDS	25
7.5	Standard Precautions	25
7.6	Health Requirements and Services	25
7.7	Training	25
7.8	BCM Student and House Staff Mental Health Service	26
7.9	Substance and Alcohol Abuse Policy	26

Article 8. Regulations Concerning Conduct

8.1	Academic Rules	27
8.2	Non-Academic Rules	28
8.3	Disorderly Assembly	28
8.4	Prohibited Conduct	28
8.5	Personal Electronic Devices	29
8.6	Falsification of College Records	30
8.7	Requirement to Report Arrests or Convictions Immediately	30
8.8	Review of Student Behavior	30
8.9	Acceptable Use Policy	31
8.10	Use of Allied Health Student Listserv	31
8.11	Use of Copyrighted Materials	31

Article 9. Faculty Review of Student Performance

9.1	Academic Standards	32
9.2	Review of Didactic Performance	32
9.3	Review of Clinical Performance	32
9.4	Review of Professional Behavior	32
9.5	Suspension of Clinical Privileges	32
9.6	Allied Health Student Promotions Committee	33
9.7	Academic Performance	33
9.8	Policies and Procedures Concerning Rights, Responsibilities, and Appeals to SAHS Student Promotions Committee Actions	34
9.9	Actions, Sanctions, and Appeals Regarding Student Performance	35

Article 10. Academic Standards for Financial Aid Eligibility

10.1	Time limits on Financial Aid Eligibility	35
10.2	Grade Requirements	36
10.3	Appeals of Financial Aid Probation or Suspension	36
10.4	Compliance	37
10.5	Institutional Refund Policy	37

Section 1



Baylor College of Medicine

History & Mission

Diversity

Student Rights

Compact Between Teachers, Learners, and Educational Staff

Code of Conduct

Outside Speakers

Fundraising

Distance Education

School of Allied Health Sciences

Mission & History

Governance

Accreditation

Administration. Faculty. Staff

Baylor College of Medicine

History: Baylor College of Medicine, a private medical school, was chartered by the State of Texas in 1900 and organized as the University of Dallas Medical Department, an independent, nonsectarian institution. In 1903, it became affiliated with Baylor University in Waco as Baylor University School of Medicine. The College moved to Houston in 1943 and became the nucleus of the Texas Medical Center. Baylor College of Medicine separated from Baylor University in 1969 and became an independent corporation.

Mission: Baylor College of Medicine is a health sciences university that creates and applies science and discoveries to further education, healthcare and community service locally and globally.

Diversity: Baylor College of Medicine fosters diversity among its students, trainees, faculty and staff as a prerequisite to accomplishing our institutional mission, and setting standards for excellence in training healthcare providers, promoting scientific innovation, and providing patient-centered care.

- Diversity, respect, and inclusiveness create an environment that is conducive to academic excellence, and strengthens our institution by increasing talent, encouraging creativity, and ensuring a broader perspective.
- Diversity helps position Baylor to reduce disparities in health and healthcare access and to better address the needs of the community we serve.
- Baylor is committed to recruiting and retaining outstanding students, trainees, faculty and staff from diverse backgrounds by providing a welcoming, supportive learning environment for all members of the Baylor community.

Student Rights: Baylor College of Medicine is committed to creating an environment for students that is conducive to academic success and academic freedom commensurate with all applicable laws and regulations. As students are not only members of the Baylor academic community but are also members of society as a whole, Baylor works to ensure that all rights, protections, and guarantees that students are assured as citizens of society are also provided to them within Baylor.

Baylor College of Medicine's Statement of Student Rights aligns with the College's mission as a health sciences university that creates knowledge and applies science and discoveries to further education, healthcare and community service locally and globally. These rights embody our values of respect, integrity, innovation, teamwork, and excellence, our vision to improve health through science, scholarship and innovation and our adherence to the Institutional Code of Conduct.

Students have the right to freedom of expression within an atmosphere of culturally responsive inclusiveness and sensitivity. The free dissemination of ideas is key to promoting the academic, personal, and professional growth of Baylor students.

Students have the right to a safe learning environment that is free of discrimination, violence, and harassment. Baylor seeks to provide a community of respect, open communication, collaboration, and inclusiveness.

Students have the right to due process in incidents of alleged student misconduct, and have the right to appeal decisions in this regard. Baylor strives to guarantee accuracy in academic results and decisions.

Students have the right to confidentiality of education records. Explicit written confidentiality policies and procedures are in place to achieve the protection of all personal information and academic records.

Baylor College of Medicine supports a healthy balance of study or work and parenting. The institution recognizes the importance of breastfeeding for the health of both mother and child, and actively supports women who breastfeed while continuing employment or study. The full policy is available in the BCM Policy and Procedure Manual.

https://intranet.bcm.edu/index.cfm?fuseaction=Policies.Display_Policy&Policy_Number=02.2.50

Compact between Teachers, Learners, and Educational Staff

Learners pursuing a professional career at Baylor College of Medicine assume responsibility to develop in-depth knowledge, acquire and apply special skills, and demonstrate professionalism. Teachers guide and educate learners, and model appropriate attitudes, interpersonal skills and professional behaviors. Core educational staff support both learners and teachers. This Compact serves both as a pledge and a reminder to teachers, learners, and educational staff that moral, ethical and professional behavior by all Baylor personnel is essential to the basic principles of this institution.

Guiding Principles of the Educational Compact

DUTY	All participants in the education mission have a duty to sustain a learning environment conducive to maintaining the knowledge, attitudes, and skills necessary for providing contemporary standards of professional behavior.
INTEGRITY	All education participants/parties will behave in a manner that reflects individual and institutional commitment to intellectual and moral excellence.
RESPECT	Fundamental to the ethic of professions is respect for every individual. Mutual respect between learners, as newer members of the profession, and their teachers, as experienced professionals, is essential for nurturing that ethic. In addition to individual respect, all educational parties must respect and follow established professional policies.

As a teacher, I pledge to:

- **Maintain** currency in my professional knowledge and skills
- **Ensure** excellence of the educational curriculum
- **Be a Model** of professionalism in all of my interactions with faculty, learners, patients, colleagues, and staff
- **Respect** all faculty, learners, patients, colleagues, and staff as individuals, without regard to gender, age, race, national origin, religion, or sexual orientation; and oppose observed disrespect or bias
- **Nurture** learner commitment to achieve personal, family, and professional balance
- **Recognize** and acknowledge expressions of professional attitudes and behaviors as well as the achievement of quantifiable academic excellence
- **Respond** vigorously to unprofessional behavior and indications of abuse or exploitation of faculty, learners, patients, colleagues, or staff
- **Create** a safe environment in which individuals can communicate any concern about breaches of this compact
- **Accept** responsibility for instilling these attributes in learners and faculty for whom I have responsibility

As a learner, I pledge to:

- **Acquire** the knowledge, skills, attitudes, and behaviors necessary to fulfill all established educational objectives
- **Embody** the professional virtues of integrity, empathy, altruism, compassion, respect, honesty, courage, and trustworthiness
- **Respect** as individuals, without regard to gender, race, national origin, religion, or sexual orientation, all patients, peers, faculty and staff
- **Uphold** the highest professional standards and conduct myself accordingly in all interactions with patients, peers, faculty and staff
- **Assist** my fellow learners in meeting their professional obligations, while fulfilling my own obligations as a professional
- **Help create** a safe environment in which individuals can communicate any concern about breaches of this compact

As Educational Staff, I pledge to:

- **Maintain** currency in my professional knowledge and skills
- **Help ensure** excellence of the educational curriculum
- **Embody** professionalism in all of my interactions with faculty, learners, patients, colleagues, and staff
- **Respect** all faculty, learners, patients, colleagues, and staff as individuals, without regard to gender, age, race, national origin, religion, or sexual orientation; and oppose observed disrespect or bias
- **Help create** a safe environment in which faculty, learners, and staff can communicate any concern about breaches of this compact

Code of Conduct: The Code of Conduct defines Baylor College of Medicine's long-standing commitment to integrity and defines the professional and ethical ways in which we work with one another. The Code of Conduct also includes our expectations for ethical behavior, respect, work within teams and the day-to-day of each person at Baylor College of Medicine. Information regarding the Code of Conduct can be found by visiting the webpage <https://www.bcm.edu/about-us/compliance>.

Outside Speakers: Baylor College of Medicine (BCM) students or student groups may from time to time invite outside speakers to address BCM functions. Outside speakers must be approved in advance by the Dean or designee. The names and credentials of proposed speakers, purpose of the presentation, and proposals for any costs such as travel, expenses, and honoraria, must be presented to the Dean or designee for review and approval at least three weeks prior to the event. All outside speakers will be required to meet the professional standards expected of BCM faculty, with evidence based presentations when applicable and complete disclosure of funding and conflict of interest.

Fundraising Policy: BCM publishes a fundraising policy to ensure appropriate fundraising practices and purposes at Baylor College of Medicine (BCM).

http://intranet.bcm.edu/index.cfm?fuseaction=Policies.Display_Policy&Policy_Number=17.1.03

https://intranet.bcm.edu/index.cfm?fuseaction=Policies.Display_Policy&Policy_Number=17.1.07

Distance Education Policy: BCM publishes a long distance education policy to ensure the institution adheres to the standards set forth by the Southern Association of Colleges and Schools Commission on Colleges (SACSCOC) and state and federal regulations in regards to distance education.

http://intranet.bcm.edu/index.cfm?fuseaction=Policies.Display_Policy&Policy_Number=23.1.10

School of Allied Health Sciences

History: The Division of Allied Health Sciences (DAHS) began in 1976 as a component of Baylor College of Medicine's (BCM) Department of Community Medicine. In 1988, the DAHS was transferred to the Dean of Medical Education's Office. In 2004, the Academic Council approved the conversion of DAHS to an independent School of Allied Health Sciences (SAHS). In 2007, the SAHS was administratively positioned to answer directly to the Executive Vice President and Executive Dean of the College. Currently, the Dean answers directly to the Provost of the College.

Mission: To promote the well-being of the people of Texas and beyond by educating outstanding health professionals, providing quality health care services, and contributing to research to improve health professions education and health care delivery.

Definition of "Allied Health: The term "Allied Health" has been used for the past 35 years to identify a cluster of health professions and educational programs that are administratively aligned as an academic unit of a school, college or university. The health professions represented in each cluster vary across colleges, universities, and governmental agencies. At Baylor College of Medicine, the "Allied Health" cluster currently includes the disciplines of Nurse Anesthesia, Physician Assistant, and Orthotics and Prosthetics which are administratively aligned within the School of Allied Health Sciences (SAHS).

Governance: The School of Allied Health Sciences is an academic unit of Baylor College of Medicine. The School is the academic home for allied health faculty, degree programs, and

students. The faculty and students are responsible for understanding and following current policies and procedures as published in the SAHS Student Handbook for each program, including periodic updates. Faculty and students are notified of updates to the SAHS Student handbook via email.

The academic policies of the School are established by the College and the Allied Health Education Executive Committee. Allied Health Admissions, Curriculum, Student Promotions and Academic Achievement, and Faculty Appointments and Promotions Committees are subcommittees of the Allied Health Education Executive Committee. These subcommittees implement the College's policies in their respective areas and recommend new policies to the Allied Health Education Executive Committee for consideration.

Accreditation: Baylor College of Medicine and the School of Allied Health Sciences' Programs are accredited as follows:

Baylor College of Medicine is accredited by the Southern Association of Colleges and Schools Commission on Colleges to award masters and doctorate degrees. Contact the Commission on Colleges at 1866 Southern Lane, Decatur, GA 30033-4097 or call (404) 679-4500 for questions about the accreditation of Baylor College of Medicine.

Council on Accreditation of Nurse Anesthesia Educational Programs (222 S. Prospect Ave., Park Ridge, IL, 60068, (847) 655-1160). The DNP Program (Nurse Anesthesia) is accredited through May 2024.

Accreditation Review Commission on Education for the Physician Assistant (12000 Findley Road, Suite 150, Johns Creek, GA, 30097, 770-476-1224). The Physician Assistant Program is accredited through 2018.

Commission on Accreditation of Allied Health Education Program (1361 Park Street, Clearwater, FL 33756, 727-210-2350. Masters programs in Orthotics and Prosthetics are accredited by CAAHEP. The program is accredited through January 2018.

Baylor College of Medicine is legally authorized to grant degrees, and grant credits toward degrees, in the State of Texas by the Texas Higher Education Coordinating Board (P.O. Box 12788, Austin, TX, 78711, 512-427-6225).

Administration and Faculty – The administration, faculty, and staff of the School of Allied Health Sciences are listed below along with their telephone numbers and email addresses.

School of Allied Health Sciences

Dean

Robert McLaughlin, PhD	robertm@bcm.edu	713-798-4613
------------------------	--	--------------

Dean Emeritus

J. David Holcomb, EdD	jholcomb@bcm.edu	713-798-4613
-----------------------	--	--------------

Executive Assistant

Jeannette Adams	jlewis@bcm.edu	713-798-3447
-----------------	--	--------------

Senior Administrative Assistant

Tonya Morris	tm1@bcm.edu	713-798-4680
--------------	--	--------------

Administrative Support Coordinator

Diana Romero	djromero@bcm.edu	713-798-4489
--------------	--	--------------

Academic Faculty

T. David Johnson, PhD	tjohnson@bcm.edu	713-798-8604
-----------------------	--	--------------

Doctor of Nursing Practice Program (Nurse Anesthesia)

Director

James R. Walker, DNP, CRNA, FAAN	jrwalker@bcm.edu	713-798-8650
----------------------------------	--	--------------

Associate Directors

Rachel Davis, DNP, CRNA	rcdavis@bcm.edu	713-798-8650
-------------------------	--	--------------

Donovan Earley, DNP, CRNA	dearley@bcm.edu	713-798-8650
---------------------------	--	--------------

Academic Faculty

Megan Bullerwell, DNP, CRNA	bullerwe@bcm.edu	713-798-8650
-----------------------------	--	--------------

Linda Harrington, PhD, DNP, RN-BC	linda.harrington@bcm.edu	713-798-8650
-----------------------------------	--	--------------

Aimee Langley, DNP, CRNA	aelangle@bcm.edu	713-798-8650
Academic Administrator		
Emily Hughes, MLS	ehughes@bcm.edu	713-798-8650
Administrative Coordinator		
Ramona Miller	ramonam@bcm.edu	713-798-8650
Orthotics & Prosthetics Program		
Director		
Jared Howell, MS, CPO	jaredh@bcm.edu	713-798-3098
Assistant Directors		
Ashley Mullen, MSAT, CPO	ashley.mullen@bcm.edu	713-798-3098
Joshua Utay, MEd, CPO,	utay@bcm.edu	713-798-3098
Academic Faculty		
Earl Fogler, CP, LP	earl.fogler@bcm.edu	713-798-3098
Sally Kenworthy, MPO, CPO, LO	sally.kenworthy@bcm.edu	713-798-3098
Fanny Schultea, MSOP, MSED, CP/L	fanny.schultea@bcm.edu	713-798-3098
Administrative Coordinator		
Liz Haecker	lizh@bcm.edu	713-798-3098
Physician Assistant Program		
Director		
Carl Fasser, PA, DFAAPA	cfasser@bcm.edu	713-798-5405
Assistant Director		
Katherine Erdman, MPAS, PA-C	kerdman@bcm.edu	713-798-5632
Assistant Director for Experiential Learning		
Vicki Waters, MS, PA-C	vwaters@bcm.edu	713-798-8556
Academic Faculty		
Stephanie DeSandro, MS, PA-C	desandro@bcm.edu	713-798-5947
Elizabeth Elliott, MS, PA-C	elliott@bcm.edu	713-798-4772
Sarah-Ann Keyes, MS, PA-C	sarah-ann.keyes@bcm.edu	713-798-8757
Elissa Love, MS, PA-C	love@bcm.edu	713-798-2010
Pre-clinical Affairs Contact		
Yvonne Baier	cbaier@bcm.edu	713-798-5821
Clinical Affairs Contact		
Patricia Kelley	pkelley@bcm.edu	713-798-5002

Section 2

Academic and Administrative Policies, Procedures, and Operational Guidelines

School of Allied Health Sciences

The logo for Baylor College of Medicine, featuring the text "Baylor College of Medicine" in a white serif font, centered within a solid blue square.

**Baylor
College of
Medicine®**

(Approved by Academic Council on November 15, 2004)

(Approved by BCM Board of Trustees on January 26, 2005)

(Approved by Allied Health Education Executive Committee on June 26, 2008)

(Revisions approved by Allied Health Education Executive Committee on September 10,
2014)

Article 2 Academic Governance

The SAHS' academic governance is based on College policies and procedures and administered through the Allied Health Education Executive Committee, a standing committee of the College, and through its four subcommittees that are appointed by the Dean (See Illustration 1).

Article 2.1 Allied Health Education Executive Committee – The Allied Health Education Executive Committee is a Standing Committee of the College. The Executive Committee sets policies regarding the governance of Allied Health programs that are consistent with BCM's Policies and Procedures and Faculty Bylaws. The Executive Committee: (1) reviews existing Allied Health programs for quality, needed improvements, and future growth; (2) develops strategies for promoting Allied Health programs, internally and externally; (3) recommends new Allied Health programs to the Academic Council. The Executive Committee is chaired by the Dean and includes Allied Health program directors, chairs of the Allied Health Admissions, Curriculum, Student Promotions, and Faculty Appointments and Promotions Committees, 3-4 BCM faculty members, at-large, with interest in Allied Health programs, and 1-2 public members (as required by accrediting agencies). The Executive Committee's membership is approved annually by the Academic Council.

Article 2.2 Allied Health Curriculum Committee: The Allied Health Curriculum Committee provides oversight, guidance, and evaluation of the curricula for Allied Health programs. The Committee oversees curriculum planning, scheduling, development, and assessment. The Allied Health Curriculum Committee Chair reports to the Allied Health Education Executive Committee regarding major curricular revisions, and results of course assessments. The Committee's membership is composed of Allied Health faculty and students and an interdisciplinary cross section of BCM faculty members with teaching responsibilities in Allied Health programs.

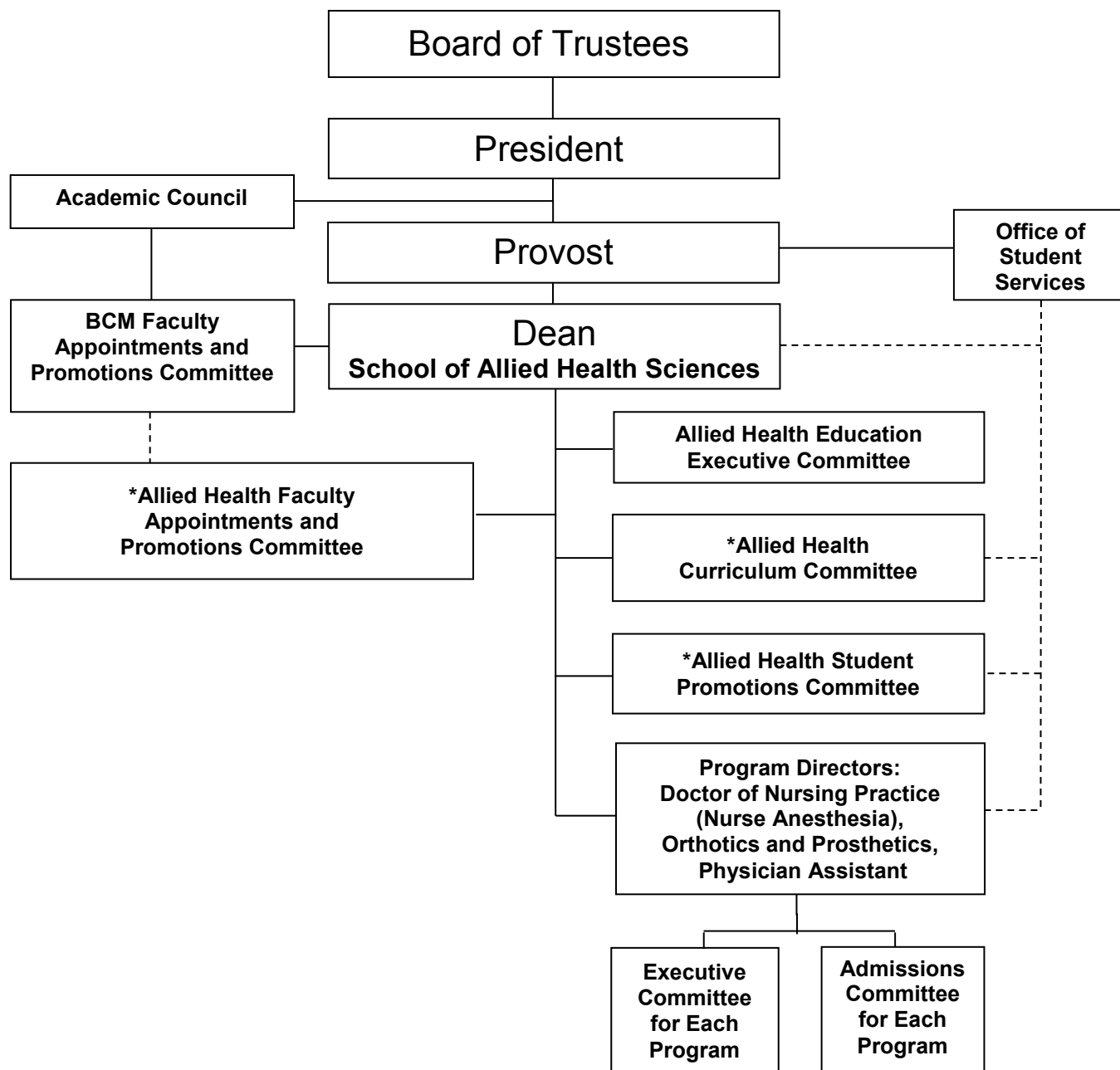
Article 2.3 Allied Health Student Promotions Committee: The Allied Health Student Promotions Committee is charged with monitoring student academic performance. The Committee ensures that each student satisfactorily completes each required course in the curriculum, meets all criteria for promotion from year to year, and ultimately satisfies all the requirements for graduation. The Allied Health Student Promotions Committee Chair reports to the Allied Health Education Executive Committee regarding grading policies, assessment of academic achievement, and other topics related to students' academic progress. The Committee is composed of Allied Health faculty and faculty, at large, who participate in activities of each Allied Health program.

Article 2.4 Allied Health Faculty Appointments and Promotions Committee: The Allied Health Faculty Appointments and Promotions Committee advises the Dean regarding faculty appointment and promotions policies and specific promotion decisions, including periodically reviewing appointment and promotions criteria and recommending revisions, as needed. The Committee reviews qualifications of individuals to be recommended for appointments and/or promotions in the SAHS. The Committee assists the Dean in planning and implementing faculty development initiatives.

Article 2.5 Program Executive Committees – Each Allied Health program has a Program Executive Committee responsible for developing program policies/procedures and curriculum, and for evaluating all aspects of the program including its outcomes. The membership of each Program Executive Committee is composed of program faculty and leadership, as well as other key stakeholders for the program. The Program Director appoints and chairs the Program Executive Committee and reports to the SAHS Dean and other SAHS committees, seeking policy approvals when necessary.

Article 2.6 Program Admissions Committees – The Allied Health Admissions Committee for each academic program reviews and ranks each applicant who meets or exceeds the minimum requirements for admission and who complete the admission interview process. The Program Admissions Committee submits its rankings and recommendations for acceptance to the Dean. The Program Admissions Committees also make recommendations to the Allied Health Education Executive Committee on policies concerning applicants to the SAHS. The Program Admissions Committees review admissions requirements as outlined in application materials for accuracy and consistency. Each Program Admissions Committee is chaired by the Program Director, who appoints its members from Allied Health faculty and students and other BCM faculty members

Illustration 1: Academic Governance School of Allied Health Sciences



* Allied Health committees are responsible to the SAHS Dean with the oversight of the Allied Health Education Executive Committee.

Article 5 Allied Health Students

Article 5.1 Admissions -- Students enrolled in the SAHS's programs are selected after being screened by Allied Health faculty members, interviewed by Allied Health and other College faculty members and students, reviewed and ranked by the Allied Health Program Admissions Committee, and officially accepted to the College by the Dean.

Minimum admissions requirements for the SAHS's degree programs include the following:

- a baccalaureate degree from an accredited college/university in the United States.
- completion of specific course requirements (prerequisites).
- an overall grade point average of 3.0 on a 4.0 scale.
- competitive scores on the Graduate Record Examination.
- a completed application submitted on or before the published deadline for receipt of applications.

Additional program-specific admission requirements are published on each program's website. Transfer credit from other institutions will not be accepted (Reference: BCM Policy and Procedure Manual 23.1.05 http://intranet.bcm.edu/index.cfm?fuseaction=Policies.Display_Policy&PolicyNumber=23.1.05). The Allied Health Program Admissions Committee may grant advanced standing in accordance with program-specific policies.

Article 5.2 Non-Discrimination Policy – The College and the SAHS admit students of any race, religion, sex, marital status, sexual orientation, color, national or ethnic origin, disability, or age to all the rights, privileges, programs, and activities generally accorded or made available to students at the School. The College and the SAHS do not discriminate on the basis of race, religion, sex, marital status, sexual orientation, color, national or ethnic origin, disability or age, in administration of its educational policies, admissions policies, scholarship and loan programs, and other school-administered programs.

Article 5.3 Background Checks – All applicants who receive an offer of admission must complete a background check as a condition of matriculation in the SAHS. The background check will include a criminal records search, social security number trace, and professional license verification. Applicants have the right to review the reported information for accuracy and completeness and to request that the vendor verify that the background information provided is correct.

- All applicants must complete a background check authorization form when requested. Admission may be denied if an applicant refuses to sign the background check authorization form, omits material facts on the form, or provides false information.
- Any offer of admission will be contingent upon completion of the background check with results deemed satisfactory. Admission may be denied or rescinded based on a review of the background check report.
- If a student is unable to participate in clinical rotations at the College's affiliated clinical sites due to criminal or other adverse activities that are revealed in a background check, he or she will not be able to fulfill the program requirements. An offer of admission will be rescinded based on the student's inability to complete the curriculum.

The School of Allied Health Sciences will arrange for an outside vendor to conduct background checks and assume the cost of this service. Reports issued directly to the SAHS will be kept confidential at all times. Background check reports will be reviewed by a committee comprised of the Dean of the SAHS, the Assistant Dean of the SAHS, the matriculant's Program Director and, as needed, a representative from the General Counsel's office. If the report does not contain any negative findings as determined by the committee, the applicant will be allowed to enroll and participate in clinical rotations. If a report does contain negative findings, the Program Director may request that the applicant submit additional information regarding the negative finding. The Program Director, in consultation with the Dean, the Assistant Dean, and, as needed, the College's General Counsel, will review all information available and determine appropriate action.

Article 5.4 Enrollment – All Allied Health students must enroll officially through the Registrar's Office. Students are encouraged not to be employed while concurrently enrolled in a SAHS program.

Article 5.5 Tuition and Fees – Tuition and fees are set by the President each academic year. Allied Health students are required to pay 2 - 3 years' tuition charges, based on the program in which they are enrolled. Students who repeat coursework or otherwise extend their enrollment beyond the typical length of their programs will be charged tuition and fees for each additional period of enrollment. Title IV Federal financial aid recipients who meet degree requirements prior to the end of the semester will be subject to the Return of Title IV Funds Policy. All other students will be subject to the Institution's Refund and Repayment Policy.

http://intranet.bcm.edu/index.cfm?fuseaction=Policies.Display_Policy&Policy_Number=23.1.04

The full tuition and fee assessment policy, including information regarding leaves of absence, is available in the BCM Policy and Procedure Manual 23.1.02

http://intranet.bcm.edu/index.cfm?fuseaction=Policies.Display_Policy&Policy_Number=23.1.02

A student on an approved leave of absence should also consult Article 7.1 regarding participation in the student health insurance program while on leave.

Article 5.6 Falsification of Admission Application – Occasionally candidates make inaccurate statements or submit false material in connection with their admissions application. In most cases, these misrepresentations are discovered during the application process and the application is rejected. If the misrepresentation is discovered after the candidate is admitted, the offer for admission is normally withdrawn. If misrepresentation is discovered after a student is registered, the offer of admission normally will be revoked and the student will be required to leave the school. If the discovery is made after a degree has been awarded, the degree may be rescinded. The determination that the application is inaccurate or contains misrepresentation rests solely with the Dean, and will be resolved outside the student disciplinary process.

Article 5.7 Attendance – For students in good standing in didactic courses, attendance at lectures is highly recommended, but not obligatory; however, laboratory and small group learning attendance may be required. At departmental discretion, attendance in laboratory and conferences may be a factor in deriving a student's grade. Students who are repeating a course because of previous academic failure are required to attend all lectures and labs of the course in question. If a faculty member in a department finds that a student is not meeting attendance requirements, the student will be notified by the faculty of the department in writing with a copy of the letter sent to the Program Director and the Dean. A student who is on Academic Probation is required to attend all lectures, laboratory sessions, and conferences in the curriculum. A student enrolled in an online course is required to participate in online course activities with regular frequency.

Article 5.8 Attendance: Clinical Curriculum - Attendance during all aspects of clinical courses is expected and considered an important part of the student's responsibility and education, and may be an important component in the evaluation of student performance. Students form an integral part of the clinical team and are accorded active clinical roles based on the expectation that they will fulfill their educational and patient care responsibilities. All students are required to be present on the first day of a new clinical course. Participation in the orientation session of a new clinical course is mandatory since important information regarding course expectations and procedures is covered on the first day. Requests for exceptions must be arranged with the Program Director. Course expectations and attendance requirements for clinical courses are determined and recorded by the department or clinical site. In addition, students are expected to remain available to discharge clinical responsibilities until released from duty on the final day of the applicable term.

Article 5.9 Leave of Absence – Allied Health students are expected to complete the course of study for the Master of Science Degree within 30 months or the Doctor of Nursing Practice Degree within 36 months. Permission must be obtained and arrangements made for any student who will require more than 30 or 36 months, based on their program of enrollment, from matriculation to complete the course of study.

- Reasons for an administrative leave should be stated in the request. Reasons for taking an administrative leave of absence include, but are not limited to, educational endeavors at another institution of higher learning, financial distress of a student necessitating full-time employment, and illness in the family.

- An administrative leave of absence may be granted, after consulting the Program Director, by the Dean, SAHS, for a period not to exceed one calendar year upon request by a student. The total amount of time that can be taken as administrative leave of absence is one calendar year. If additional time for a leave of absence is desired, it should be requested in writing. The request will then be subject to review and approval by the Allied Health Student Promotions Committee.
- A medical leave of absence may be granted by the Dean, SAHS, for periods not to exceed one calendar year based upon the written opinion of the student's physician that a medical leave of absence is necessary. Return to active student status from medical leave of absence must be supported by a physician's letter. At that time, if additional leave of absence is desired, it should be requested in writing. The request will then be subject to review and approval by the Allied Health Student Promotions Committee.
- Five business days after being granted LOA, students are not officially enrolled at the College and may not avail themselves of the benefits/resources and financial or scholarship disbursements associated with enrollment. Students on LOA may not represent themselves as officially enrolled at the College. Violation of these guidelines while on LOA will jeopardize a student's return to official enrollment.
- Any LOA will be restricted to 12 months, unless otherwise approved by the SAHS Dean. If the student does not return to full-time study within 12 months, permanent dismissal will result.

Allied Health Student Leave of Absence (LOA) Approval Process

- Student submits written request for LOA to the Program Director and/or SAHS Dean.
- LOA request is reviewed by the Program Director and the SAHS Dean.

If LOA request is approved:

- Official Student Clearance Process form is issued from the Dean's office. The date of action recorded on this form will document the last day of attendance.
- Student obtains signatures from the following offices signifying that each area's responsibilities have been completed:
 - The College's DNP/PA/OP Program Office. Clinical ID badges, pagers, keys, etc., must be turned in to the Program Office.
 - The College's Benefits Office
 - The College's Student Account Services
 - The College's Office of Student Financial Aid
 - The College's Education Resource Center (ERC)
 - TMC Jesse H. Jones Library
 - The College's Office of the Registrar
- The Program Director certifies that the clearance process has been finalized by signing the Student Clearance Process form. The original Student Clearance Process form is delivered to the Registrar's Office and will become a part of the student's permanent record; and a copy will be kept in the student's program file. The College's ID badge and proximity card(s) must be turned in as required.

A student requesting an approved leave of absence should consult Article 7.1 regarding participation in the student health insurance program and Article 5.5 regarding tuition and fee payment.

Article 5.10 Withdrawal from the College – A student who wishes to withdraw from the SAHS must personally meet with the Dean and/or the Program Director and submit a letter to the Dean requesting withdrawal. A request to withdraw will not be granted for a student who has been dismissed by action of the Allied Health Student Promotions Committee or whose dismissal is in the appeals process.

The office of the Dean and/or the Program Director will advise the student about the check-out process to be completed within five business days. After five business days, the student who withdraws from a program but has not completed the check-out process is considered withdrawn.

The official records of a student who is withdrawing or has been dismissed from the College will be placed on hold until the check-out process is complete. The College will not release any official records until the student has obtained the required signatures on the check-out form and returned it to the Program Director. The student shall remain responsible for tuition and fees up to the date that the Program Director certifies that the clearance process has been completed. Once the check-out process is deemed complete by the Program Director and the Student Clearance Form is processed by the Registrar's Office, the hold will be removed from the student's records.

Article 5.11 Reinstatement of Students Previously Dismissed or Voluntarily Withdrawn A student who wishes to be re-admitted to the College should apply to the respective program in the same way as any new applicant. The respective program shall have available the student's entire permanent record at the College. The Admissions Committee may request any additional information that might help them in their decision. This might include documentation of additional academic and work experience, medical and psychiatric data, etc.

This procedure is applicable to the following:

- Students dismissed for academic reasons
- Students dismissed for nonacademic reasons
- Students who have withdrawn from Baylor College of Medicine

Article 5.12 Credit Hour Assignment – One credit hour is the amount of work represented in intended learning outcomes and verified by evidence of student achievement. Credit hour assignment is an institutionally established equivalency and reasonably approximates the following:

1. Academic credit will be awarded in credit hours. One clock hour will serve as the base unit for awarding academic credit.
2. A credit hour is an amount of work represented in intended learning outcomes and verified by evidence of student achievement.
3. The program will ensure reasonable equivalency for one credit hour across all courses.
4. Reasonable approximations of the time spent in student instruction and learning will receive the following academic credit:
 - a. One credit hour of classroom learning = 15 hours of classroom instruction and a minimum of 2 hours of out-of-class student work per hour of classroom instruction.
 - b. One credit hour of laboratory learning = 30 hours of laboratory learning and a minimum of 1 hour of out-of-class student work per hour of laboratory learning.
 - c. One credit hour of distance learning = 45 hours of learning activities considering both time spent online and student work off-line.
 - d. One credit hour of clinical learning = 100 hours of clinical time where the average across the clinical phase of the program is 50 hours per week.
5. Credit hour assignment for courses including a combination of learning modalities will follow the above criteria in a combined summative fashion.

Program Name	Semester Credit Hours Required for Completion
Doctor of Nursing Practice	132
Orthotics and Prosthetics	128
Physician Assistant	137

The full policy is available in the BCM Policy and Procedure Manual.

http://intranet.bcm.edu/index.cfm?fuseaction=Policies.Display_Policy&Policy_Number=23.1.11

Article 5.13 Grading and Grading Policies

Article 5.13.1 Assignment of Grades – Interim term grades are assigned for courses that continue into the following term; final grades are not available until the course is completed. Individual departments and course directors determine how to calculate course grades and the weight given to each component used to compute interim and final grades. At the conclusion of each didactic and clinical course, the department or course director shall render a final course grade for each enrolled student.

In all pre-clinical courses, clinical courses, clinical rotations, and clinical elective rotations, grades are rendered as shown in Table 1, with the exceptions of specific courses identified below for which grades are rendered as shown in Table 2. If all requirements have not been met for a course, or a targeted remediation is offered but not completed, a grade of “Incomplete” (I) is assigned.

Table 1. Grade assignments and point values of SAHS courses.

Grade	Score Range	Quality Points	Interpretation
A	90 – 100	4.0	Exceptional performance
B	76 – 89	3.0	Performance meeting expectations
C	70 – 75	2.0	Unsatisfactory performance (failure)
D	65 – 69	1.0	Unsatisfactory performance (failure)
F	0 – 64	0.0	Unsatisfactory performance (failure)

Grades for the following courses are to be rendered as shown in Table 2.

- Clinical Biochemistry
- Anatomical Science 1 & 2
- Human Physiology 1 & 2
- Medical Ethics (OP and PA Students)
- Nervous System (NA students)

Table 2. Alternate grade assignments and point values for selected SAHS pre-clinical courses.

Grade	Score Range	Quality Points	Interpretation
A	90 – 100	4.0	Exceptional performance
B	70 – 89	3.0	Performance meeting expectations
C	65 - 69	2.0	Unsatisfactory performance (failure)
D	60 - 64	1.0	Unsatisfactory performance (failure)
F	0 – 59	0.0	Unsatisfactory performance (failure)

Article 5.13.2 Reporting of Grades – Course directors for all didactic and clinical courses report interim and final scores in whole numbers to the appropriate Program Director. Following the completion of exam week each academic term, Program Directors may release course grades with scores to students. Each Program Director reports grades to the Registrar and maintains a cumulative grade sheet that shows all interim and final grades by term for each student in the program.

Article 5.13.3 Course Grade Requirements – All courses require a final grade of B or better. Any final grade lower than a B is a failing grade and the stipulations below under “Final Grades” apply. All grades of Incomplete in pre-clinical courses must be replaced by passing grades before a student may progress to the clinical phase of each program. An incomplete may be assigned in clinical courses where faculty have determined that remediation is necessary and appropriate. The type and extent of remediation will be determined by the Program Director with consideration of the individual student’s learning needs and patient safety. Students may only be assigned two incompletes in clinical courses during the entire program (exclusive of incompletes in pre-clinical courses). If student performance is less than passing in a third clinical course, a final grade of fail will be assigned, after which the SAHS Student Promotions Committee will determine whether or not remediation will be offered. All grades of Incomplete must be replaced by passing grades prior to graduation from an SAHS program.

Article 5.13.4 Interim Grades

1. All course grades must be A, B, C, D, or F. Course grades of pass or fail alone may not be used.
2. All interim course grades that fall below a B result in a Letter of Jeopardy from the Program Director. The purpose of this letter is to document that the program has informed the student of the interim score and the requirement that performance must improve in order to pass the course. The letter will offer the student educational support, if desired (e.g., meet with course director/faculty, student counseling service).
3. Interim grades that fall below the minimal passing requirement cannot be remediated.

Article 5.13.5 Final Grades

1. Students must achieve a final passing grade of B or better in all courses.
2. Only final course grades can result in formal academic action by the Program Director or AHSPC (e.g., academic probation, dismissal).
3. When a student achieves a final grade of C, D, or F, the Course Director will evaluate for areas of focused knowledge deficits.
 - a. If a single area of focused knowledge deficit is identified, the Course Director may direct a targeted remediation in the area of weakness.
 - i. Targeted remediation should occur prior to the AHSPC meeting; if this is not possible, the Course Director reports a grade of incomplete (I) to the Program Director and confers with the Program on a date the remediation will be completed.
 - ii. Successful targeted remediation results in the lowest passing grade in that course (B) being reported as a final grade to the Program Director.
 - iii. Unsuccessful targeted remediation results in the original failing grade (C, D, or F) being reported as a final grade to the Program Director.
 - b. If more than one area of knowledge deficit is identified, the student is not eligible for targeted remediation and the original failing grade (C, D, or F) is reported as a final grade to the Program Director.
4. If a student has a single failing final course grade, the responsible Program Director places the student on academic probation, and arranges comprehensive remediation of the course. The Program Director can authorize comprehensive remediation of two failing final course grades, provided they do not occur concurrently.
 - a. Comprehensive remediation includes a course examination and/or clinical remediation activities representing all course content areas.
 - i. Successful comprehensive remediation will result in the lowest passing grade (B) in the course being reported as a final grade to the Program Director. The Program Director will report this grade to the Office of the Registrar.
 - ii. Failure of comprehensive remediation results in the original failing grade (C, D, or F) being reported as a final grade to the Program Director. The Program Director will report this grade to the Office of the Registrar and refer the matter to the AHSPC. The AHSPC may require the student to repeat the course in its entirety, or other actions deemed appropriate.
5. If a student has two or more concurrent failing final course grades (C, D, or F), the responsible Program Director places the student on academic probation, does not authorize remediation, and refers the matter to the AHSPC. The AHSPC will consider options deemed appropriate, including dismissal.
6. If after successfully remediating two failing final course grades, a student has a third failing final course grade, the responsible Program Director places the student on academic probation, does not authorize remediation, and refers the matter to the AHSPC. The AHSPC will consider options deemed appropriate, including dismissal.

Article 5.14 Transcripts – All final grades appear on transcripts. If all course requirements have not been met, a grade of "I" (Incomplete) will appear on the transcript.

When a completed course has been failed, or remediation is not successful, the initial failing grade of C, D, or F becomes part of the official transcript. When a course has been successfully remediated through targeted or comprehensive remediation the transcript will show only the final grade, which will be the lowest possible passing grade (B) in that course. When a course has been repeated in its entirety, that transcript will show both the original failing grade and the grade achieved in the repeated course.

Article 5.15 Student Records – The College's policy regarding integrity, confidentiality, and retention of student academic records is based upon practices recommended by the American Association of American Collegiate Registrars and Admissions Officers, accreditation requirements of the Southern Association of Colleges and Schools Commission on Colleges, and the Family Educational Rights and Privacy Act. The full policy is available in the BCM Policy and Procedure Manual 23.1.06 http://intranet.bcm.edu/index.cfm?fuseaction=Policies.Display_Policy&PolicyNumber=23.1.06

Article 5.16 Release of Information – The College adheres to the Family Educational Rights and Privacy Act (FERPA) that affords students over 18 years of age certain rights with respect to their education records.

1. The right to inspect and review the student's education record.
2. The right to request the amendment of the student's education records that the student believes are inaccurate or misleading.
3. The right to consent to disclosures of personally identifiable information contained in the student's education records, except to the extent that FERPA authorizes disclosure without consent (directory information).
4. The right to file a complaint with the U.S. Department of Education concerning alleged failures by the College to comply with the requirements of FERPA.

Students may request in writing that the College withhold their directory information from inquiring educational sources. Directory Information includes but is not limited to: name, local address and telephone number, major field of study, dates of attendance, class schedules, degrees granted and graduation dates, class standing, and the College's email address.

Official Grades may only be transmitted from the College to another institution through an official transcript issued by the Office of the Registrar.

If a student requests a letter of recommendation, the individual faculty member may state only the official grade received in the course and a narrative. Official grades are A, B, C, D and F. Departments and faculty of College may not transmit any numerical grade to another institution or individual faculty member. Program directors may transmit required numeric information at the request of the student to academic institutions, licensing agencies, or other official entities.

Departments may discuss grades with individual students and release an individual sealed, confidential report to each student. Departments may post or release general information about course grades including: mean scores and grade distributions; however, Federal Law prohibits the general posting or group release of individual grade information which in any way identifies individual students including the use of a code.

Program faculty will communicate with clinical sites, preceptors and/or coordinators regarding student performance. This communication may be in verbal or written form.

Article 5.17 Student Grievance Policy – This Student Grievance Policy does not supersede policies and procedures concerning student rights, responsibilities, and appeals (Articles 7.8 – 7.9). Moreover, nothing in the policy supplants actions/decisions of the Allied Health Student Promotions Committee. A student's dissatisfaction with an examination or grade is not grounds for a grievance against the faculty member who assigned the grade.

A grievance is a complaint arising out of any alleged unauthorized or unjustified act or decision by a member of the faculty, administration, or staff that adversely affects the status, rights, or privileges of a member of the student body. The burden of proof shall rest with the complainant.

Student complaints or grievances should initially be addressed, if possible, by the student with the individual (student, faculty, staff) most closely related to the grievance. If no resolution is established, the student must ask her/his Allied Health Program Director for assistance. If the problem cannot be resolved informally or with the assistance of the respective Allied Health Program Director, the student may file a formal, written grievance with the Dean, SAHS.

The full policy, including appeals procedures, is available in the BCM Policy and Procedure Manual.
http://intranet.bcm.edu/index.cfm?fuseaction=Policies.Display_Policy&Policy_Number=23.1.08

Baylor College of Medicine School of Allied Health Sciences **Technical Standards for Admission and Graduation**

It is the policy of Baylor College of Medicine that no person shall be denied admission to the school, or awarded a degree from the school on the basis of any disability, pursuant to the Americans with Disabilities Act (ADA) of 1990 and section 504 of the Rehabilitation Act of 1973, provided that the person demonstrates ability to meet the minimum standards set forth herein. Baylor College of Medicine will reasonably accommodate individuals with disabilities, provided that the standards required by the school of all graduates and the integrity of the school's curriculum are upheld. Mastery of essential skills is required of all students.

These standards are developed as criteria to achieve the Doctor of Nursing Practice or Master of Science degree in preparation for practice as a Nurse Anesthetist, Orthotist/Prosthetist, or Physician Assistant. The faculty is equally cognizant of its responsibilities to patients who will be a part of the educational process and to future patients who will entrust their welfare and lives to graduates of our school. The safety of the patient, on whom the medical education process is largely focused, has been given a primary consideration in developing these standards. Therefore, the faculty must carefully consider the personal and emotional characteristics, motivation, industry, maturity, resourcefulness, and personal health of the aspiring health care professional.

Abilities and Skills Requisite for Nurse Anesthesia, Orthotist/Prosthetist, or Physician Assistant Program Completion – A candidate for the Master of Science degree in either Physician Assistant Studies or Orthotics and Prosthetics, or the Doctor of Nursing Practice degree in Nurse Anesthesia must have abilities and skills in six essential areas: (1) observation, (2) communication, (3) motor, (4) conceptual, integrative, and quantitative, (5) behavioral and social, and (6) ethical. Technological compensation can be made for disabilities in certain of these areas, but a candidate must be able to perform certain basic functions in a reasonably independent manner. The use of a trained intermediary to observe or interpret information or to perform procedures is deemed to compromise the essential function of the health care professional and may jeopardize the safety of the patient. The six areas of abilities/skills are detailed as follows:

1. **Observation.** The candidate must be able to:
 - a. observe demonstrations and experiments in the basic sciences
 - b. observe a patient accurately at a distance and close at hand
 - c. discriminate variations in human responses to disease using visual, auditory, tactile, and other sensory cues
 - d. discriminate changes in monitoring devices and alarms using visual and auditory senses
2. **Communication.** The candidate must be able to:
 - a. communicate clearly, effectively, and sensitively in English through oral and written methods in order to communicate with other health care providers and patients of all ages
 - b. speak, to receive information in oral form, and to observe patients in order to elicit information, to describe changes in mood, activity and posture, and to perceive non-verbal communications
3. **Motor.** The candidate must have sufficient motor function to:
 - a. elicit information from patients by palpation, auscultation, percussion, and other diagnostic maneuvers
 - b. execute motor movements reasonably required to provide general care and emergency treatment to patients. Examples of general care and emergency treatment reasonably required of Nurse Anesthetists and/or Physician Assistants include, but are not limited to, cardiopulmonary resuscitation, airway management, vascular access, medication administration, catheter insertions, suturing, application of pressure to stop bleeding, obstetrical maneuvers, etc. Examples of general care and emergency treatment reasonably required of Orthotists/Prosthetists include, but are not limited to, safe patient handling in transfers and during weight-bearing activities, and cardiopulmonary resuscitation.
 - c. coordinate gross and fine motor movements, equilibrium and functional use of the senses of touch and vision

- d. Orthotist/Prosthetist candidates must be able to lift up to 25 pounds, operate power tools safely, and manipulate materials and components to fashion devices for patient use.

4. Intellectual-Conceptual Integrative and Quantitative Abilities. The candidate must be able to:

- a. use reason, analysis, calculations, problem solving, critical thinking, synthesis, self-evaluation and other learning skills to acquire knowledge, comprehend and synthesize complex concepts
- b. independently access and interpret medical histories or files
- c. identify significant findings from history, physical examination, and laboratory data
- d. provide a reasoned explanation for likely diagnoses and prescribed medications, therapies, and devices
- e. interpret information derived from auditory, visual, written, and other visual data to determine appropriate patient management plans
- f. recall and retain information in an efficient and timely manner
- g. incorporate new information from peers, teachers, and the medical literature in formulating diagnoses and plans
- h. identify and communicate knowledge to others when indicated

5. Behavioral and Social Attributes. The candidate must possess the emotional health required:

- a. for full utilization of his/her intellectual abilities
- b. for the exercise of good judgment
- c. for the prompt completion of all responsibilities attendant to the diagnosis and care of patients
- d. for the development of mature, sensitive, and effective relationships with patients
- e. to tolerate physically taxing workloads
- f. to function effectively under stress
- g. to adapt to changing environments
- h. to function flexibly and effectively in stressful and rapidly changing situations
- i. to learn to function in the face of uncertainties and ambiguities inherent in the clinical problems of many patients
- j. to employ compassion, integrity, concern for others, interpersonal skills, interest and motivation
- k. to accept criticism and respond by appropriate behavior modification
- l. to use supervision appropriately, and act independently when indicated
- m. to demonstrate personal and professional self-control as well as tactfulness, sensitivity, compassion, honesty, integrity, empathy, and respect

6. Ethical Standards: The candidate must demonstrate professional demeanor and behavior, and must perform in an ethical manner in all dealings with peers, faculty, staff, and patients.

Certain disabilities can be accommodated without sacrificing the standards required by the school or compromising the integrity of the curriculum. The school is committed to development of competitive and qualified candidates with disabilities. At the same time, the school recognizes the essential need to preserve the standards and integrity of the curriculum requisite for competent and effective practice as a Nurse Anesthetist, Orthotist/Prosthetist, or Physician Assistant. Questions about any additional program-specific technical requirements should be addressed to the respective program director. Since the treatment of patients is an essential part of the educational program, the health and safety of those patients must be protected as a first priority.

Article 6 Student Services

Article 6.1 Policy on Harassment –BCM prohibits sexual harassment or harassment of and by faculty, staff, students, post doctoral trainees, residents, fellows and non-employees. Violation of this policy by an employee shall subject him/her to disciplinary action, up to and including discharge. Other available remedies may be utilized for violation of this policy by a non-employee.

Harassment includes, but is not limited to:

- Slurs
- Jokes
- Verbal, graphic, or physical conduct related to an individual's race, color, sex, religion, national origin, age, physical or mental disability, or marital or veteran status.

Harassment also includes unwelcome sexual advances and requests for sexual favors from a party of the same or different sex. These behaviors constitute harassment when submission is a condition of:

- Employment
- Promotion
- Evaluation
- Educational advancement
- Submission to or rejection of such is used as the basis for employment or academic decisions.

BCM also prohibits retaliation against any faculty, staff, student, post doctoral trainee resident, or fellow who rejects, protests, or complains about harassment. Retaliation is a violation of College policy.

Complaints of harassment will receive prompt attention. Information obtained during the course of an investigation of harassment will be maintained in a confidential manner to the extent possible and will be shared only with individuals who have a need to know for the purposes of the investigation and resolution of the complaint. Individuals who make false statements during the course of a harassment investigation may be subject to discipline, which may include discharge. All faculty, staff, students, post doctoral trainees, residents, and fellows are expected to cooperate fully with such investigations. There will be no discrimination, recrimination, or reprisal against any faculty, staff, students, post doctoral trainees, residents, or fellows for making a good faith report of harassment.

Any faculty, staff, students, post doctoral trainees, residents, or fellows who believes that he, she or another individual is being harassed in any manner by a supervisor, manager, co-work, customer, vendor or other person should inform the alleged harasser that his or her actions are offensive, unwelcome, and/or inappropriate and immediately bring the matter to the attention of his or her supervisor or any of the following individuals:

- Program Director of Doctor of Nursing Practice, Orthotics and Prosthetics, or Physician Assistant Program
- Dean
- Chairperson of the Committee on the Prevention of Sexual Harassment
- Office of Student Affairs
- Departmental Administrator
- Direct Supervisor/Manager
- Human Resources/Employee Relations or Vice President of Human Resources
- Corporate Officers of BCM

Article 6.2 Students with Disabilities – Baylor College of Medicine is committed to providing equal educational access for qualified students with disabilities in accordance with state and federal laws including the Americans with Disabilities Act of 1990, as amended in 2008, and Section 504 of the Rehabilitation Act of 1973. The full policy, including criteria for requesting reasonable accommodations and procedures for appeal, is available in the BCM Policy and Procedure Manual 23.1.07

http://intranet.bcm.edu/index.cfm?fuseaction=Policies.Display_Policy&Policy_Number=23.1.07.

Article 6.3 Sexual Harassment and Sexual Violence – Title IX of the Education Amendments of 1972, 20 U.S.C. §1681, prohibits discrimination based on sex in all programs or activities that receive Federal financial assistance. Title IX also prohibits sexual harassment, including same-gender harassment and student-to-student harassment. BCM does not discriminate based on sex and will not tolerate discrimination which includes sexual harassment, sexual violence, dating violence, domestic violence and stalking. Incidents of sexual harassment, sexual violence, dating violence, domestic violence and stalking are taken seriously. Reports will be promptly investigated and appropriate actions will be taken to remedy the effects of the harassment or violence and prevent the reoccurrence.

A student who experiences sexual harassment, sexual violence, dating violence, domestic violence and/or stalking may contact the BCM Title IX Coordinator for assistance.

Title IX Coordinator
Mikiba W. Morehead
Office of Student Services
Baylor College of Medicine
One Baylor Plaza- Main Campus
Cullen Building, 415A
mikiba.morehead@bcm.edu (713) 798-8137

A student may also report to the BCM Security Office via the campus emergency line at 8811 or the non-emergency campus extension of 8-8300. The BCM Security Office can assist students with filing a report with local law enforcement and in the case of any emergency encourages you to call the police at 911. BCM complies with the Family Educational Rights and Privacy Act (FERPA), and to the extent possible will protect the privacy of all persons involved in a report of sexual harassment, sexual violence, dating violence, domestic violence and/or stalking.

BCM does not tolerate acts of retaliation. Individuals responsible for retaliation against any person who provides information, participates in an investigation, or the adjudication of a report will be met with disciplinary action up to and including removal from the BCM community.
http://intranet.bcm.edu/index.cfm?fuseaction=Policies.Display_Policy&policy_number=02.10.10

BCM provides prevention programs and education to faculty, staff and students in an effort to dispel the myths, address the effects, and reduce the occurrence of sexual harassment, sexual violence, dating violence, domestic violence and stalking. More information on our efforts, options for reporting and available support services can be found by visiting the Office of Student Services webpage at <https://www.bcm.edu/education/academic-faculty-affairs/student-services/support-services>.

The full Sexual Harassment and Sexual Violence policy is available in the BCM Policy and Procedure Manual 02.2.26. The policy can be found on webpage <https://www.bcm.edu/education/academic-faculty-affairs/academic-policies>.

Article 6.4 Academic Advising, Career Advising, Tutoring

Academic Advising: The PA, DNP and OP programs assign a faculty advisor to each enrolled student. The relationship continues throughout their education. The role of the faculty advisor is to provide a consistent academic and professional resource to the student. Periodic meetings with the faculty advisor are mandatory; optional additional meeting times are available and encouraged.

Tutoring and Academic Support: Allied Health programs provide faculty-directed timely review sessions throughout each academic term to prepare students for knowledge and skill-based examinations.

Career Advising: The PA, DNP and OP programs assign a faculty advisor to each enrolled student. The relationship continues throughout their education. The role of the faculty advisor is to provide a consistent professional resource to the students regarding discipline-specific career planning and initial employment in the field or post-graduate training opportunities. Mandatory and on-request meetings with the faculty advisor include career advising at key points as students progress toward graduation.

In addition, programs require participation in career development programs to assist with their preparation for the workforce. Students are given ample opportunity to meet with advisors or other faculty members to discuss employment opportunities and career advancement.

Article 7 Student Wellness

Article 7.1 Student Health Insurance – Baylor College of Medicine believes student wellness is essential to academic progress and requires that all individuals enrolled in any Baylor academic program maintain medical coverage through the program or are enrolled in alternative coverage that meets the coverage requirements established by the College. The program ensures students have access to health and dental insurance to cover the costs of routine care and/or unexpected illness or injury.

Information regarding the student health insurance program, including enrollment requirements, eligible dependents, costs of coverage, benefits, and coverage during leave of absence is available at <https://www.bcm.edu/education/schools/medical-school/student-affairs/student-handbook/insurance>.

Article 7.2 Personal Responsibility – Learning and practicing medicine has always involved exposure to infectious agents. Personal risks can be minimized by intelligent attention to immunizations, standard precautions and other preventable measures. Each student must take personal responsibility for being aware of his/her status and taking proper precautions.

The College subscribes to the American Association of Medical Colleges' statement of responsibility in treating patients with HIV: students, residents, and faculty have a fundamental responsibility to provide care to all patients assigned to them regardless of diagnosis. Failure to accept responsibility violates a basic tenant of the medical profession to place the patient's interest and welfare first.

Article 7.3 Infection Control – Students exposed to or with infectious or communicable illnesses including chicken pox, diarrheal illness, measles, tuberculosis, group A strep infection or draining lesions on the hands must see their primary care physician or consult a physician in the Family Medicine department. In addition, students with such circumstances should consult with the infection control office in the institution where the infection occurred or where the student is doing a clerkship about the advisability of working with patients to be sure that he or she is following the local regulations. When caring for patients with TB, students should adhere to local regulations. Precautions may include wearing appropriate masks, or custom fitted masks.

Article 7.4 Institutional Policy on AIDS – The risk to health care workers of acquiring Human Immunodeficiency Virus (HIV) infection in the routine performance of duties is quite low. Students, house officers, faculty, and staff will be expected to care for patients so infected as they would any patient suffering from other potentially communicable diseases in accordance with the recommendations of the Center for Disease Control (CDC) and existing hospital policies.

Students, house officers, faculty, staff with HIV infection will be handled as any other medical problem in that restrictions on activities will be based on the advice of that individual's physician and guidelines set forth by the CDC.

The College does not have routine, mandatory testing of HIV for students. However, the State of Texas requires health care workers who know they are infected with HIV or hepatitis B to seek a fitness for duty evaluation from the institution. Students who are known to be infected with HIV, hepatitis B or hepatitis C must seek an evaluation with the Occupational Health Program to determine whether restrictions on activities are necessary. Restrictions on activities, if any, will be based on the advice of that individual's physician, standards of medical practice and guidelines set forth by the CDC.

Article 7.5 Standard Precautions – Baylor College of Medicine students ("Students") are expected to provide the appropriate level of care to all patients while following standard precautions to prevent the spread of infectious diseases due to exposure to human blood or bodily fluid. Information regarding standard precautions, needle stick injuries, and exposure to blood or bodily fluids is available at <https://www.bcm.edu/education/schools/medical-school/student-affairs/student-handbook/health-services>.

Article 7.6 Health Requirements and Services – Before registration, all students must complete the Student Health Assessment, and show proof of immunizations/serologic confirmation required by the Texas Education Code and BCM:

Tetanus/Diphtheria	Rubella
Measles (rubella)	Mumps
Hepatitis B	Polio
Meningitis	Varicella (Chicken Pox)
Tuberculosis* (PPD/Mantoux)	

*If positive, a chest x-ray is required.

Health care services are offered by primary care providers chosen by the student at the time of registration. The Occupational Health Program Office consults with students in regard to safety and health related issues pertinent to all health care professionals and conducts TB testing annually. All student health records are maintained in accordance to guidelines specified by the Health Insurance Portability and Accountability Act (HIPAA) of 1996.

Article 7.7 Training – The Office of Environmental Safety requires that all students view the annually updated OSHA Bloodborne Pathogens (BBP) Training Film and be trained to prevent

transmission of tuberculosis. Students may consult with a dean in the Office of Student Affairs in regard to all available health care service options in the Texas Medical Center. The Office of Corporate Compliance Programs requires that all BCM students, visiting students and Observers complete the on-line training in regard to HIPAA.

Article 7.8 BCM Student and House Medical Staff Mental Health Service – The Student and House Staff Mental Health Service, directed by the Department of Psychiatry & Behavioral Sciences, provides confidential, free counseling for students, spouses, significant others, or couples. Students and spouses interested in obtaining counseling may call 713-798-4881. An appointment will be made to see a BCM faculty psychiatrist, or other professional, usually within two or three days. The telephone line has a 24-hour answering service. Through the service, consultation, counseling (including marital counseling), crisis intervention or psychotherapy up to 12 sessions are provided free of charge.

Information given to the counselor will be treated as confidential. It will not be available to the administration, faculty, or any committee of the College. Limited information may be given with the permission of or at the request of the student. No claim will be made against medical insurance.

The counselor will not participate in any academic decision concerning students. If a psychiatric evaluation is requested by the school administration to aid in decisions concerning admission, leave of absence, disciplinary issues, etc., such matters will be referred to psychiatrists who do not serve as counselors.

In the event of a psychiatric emergency or when a faculty psychiatrist cannot be reached immediately, a student may go directly to Houston Methodist Hospital or Ben Taub General Hospital emergency rooms.

For extended treatment of psychiatric problems requiring hospitalization, a student may be referred to other specialists in the Department of Psychiatry and Behavioral Sciences or to one in the community. For psychiatric treatment in these instances, there will be fees which will come under the provisions of the student's health insurance policy and the student's own resources. One option among these is the BCM Psychiatry Clinic, where a student or spouse can be seen for ongoing psychotherapy by a Psychiatry resident at the clinic's minimum fee. In addition, if a student needs ongoing psychotherapy in order to remain enrolled and cannot afford to pay for it, BCM will pay for the treatment-which will be provided by a voluntary faculty psychiatrist as often as once a week for up to one year. This will be available only to a few students at a time and will be determined on the basis of financial need.

Students also have access to WellConnect, a service that provides a 24/7 hotline for crisis counseling (<http://www.wellconnectbysrs.com/>).

Article 7.9 Substance and Alcohol Abuse Policy –The federal Drug-Free Workplace Act is the foundation for the BCM Substance and Alcohol Abuse Policy (Number 02.5.34). Particular areas of emphasis in this Act are:

- Publishing a policy statement notifying BCM Persons of prohibitions against the use, possession, distribution, dispensing, or manufacture of any Prohibited Substance in the workplace and on BCM premises and against the excessive consumption of alcohol, in the circumstances described in this policy.
- Establishing an ongoing drug-free awareness program that periodically informs BCM Persons of the dangers of drug abuse and explains our drug-free workplace policy, possible penalties for policy violations, and of the available drug counseling, rehabilitation and assistance programs.
- Establishing a mechanism for reporting suspected violations of this policy.

Creating a healthy and safe work environment is a top priority of the College. This substance and alcohol abuse policy has been established to help keep BCM Persons healthy, productive, and free from injury. Compliance with this policy is a condition to continued employment, enrollment, or association, as applicable, of all BCM Persons.

The term “BCM premises” includes any and all property owned or leased by BCM, hospitals, clinics, and any other practice site affiliated with BCM, and any vehicle engaged in BCM operations.

The term “prohibited substance” includes illegal drugs, controlled substances being misused, and

prescription and over-the-counter drugs with abuse potential being taken in amounts not in accordance with the prescribed or recommended dosage.

Prohibited Substance. All BCM Persons are strictly prohibited from engaging in the use, possession, distribution, dispensing, manufacture, or sale of any Prohibited Substance while on BCM premises, while conducting BCM business, or while representing BCM in any educational, research, clinical, or community service activity. Any BCM Person who comes to work or class, as applicable, under the influence of any Prohibited Substance will be subject to discipline, up to and including dismissal and referral to law enforcement agencies.

In situations in which a supervisor of a BCM Person at work or in class has a reasonable suspicion that such BCM Person may be using a Prohibited Substance, BCM may require the Person to submit to testing. A reasonable suspicion of use does not necessarily imply a reasonable suspicion of impairment. A supervisor is either defined by an approved job description or identified by title as a Chair or Section Chief or similar title.

Circumstances that may create reasonable suspicion of use include, but are not limited to, physical symptoms of impairment; observable phenomena, such as direct observation of drug use or possession; a pattern of abnormal or erratic behavior; arrest or conviction for a drug-related offense, or identification of an employee as the focus of a criminal investigation into illegal drug possession, use or trafficking; or reports from reliable and credible sources.

Alcohol. BCM persons found to have consumed alcohol in excess of the applicable legal limit while on BCM premises, while on BCM business, or while representing BCM in an educational, research, clinical, or community service activity also may be subject to testing and/or discipline under the terms of this policy. Any BCM person who comes to work or class, as applicable, under the influence of alcohol, in excess of the applicable legal limit, will be subject to discipline, up to and including dismissal.

If authorized in advance by the Office of Public Affairs, alcohol may be consumed on BCM premises.

Additional Guidelines. Vendors who appear at BCM under the influence of any Prohibited Substance or under the influence of alcohol will be removed from the premises and possibly prohibited from doing future business with the College.

BCM Persons convicted of a criminal drug offense that occurred on BCM premises (or while the Person was engaged in BCM business) must notify BCM in writing of the conviction within five (5) days thereof and satisfactorily complete an approved rehabilitation program.

BCM will establish such procedures as it deems necessary to effectively enforce its substance and alcohol abuse policy. Refusing to cooperate with these procedures may be cause for disciplinary action, up to and including dismissal.

BCM will make every effort to keep the results of drug and alcohol tests confidential. The BCM Person's supervisor will be notified of the test results, and other management personnel may be notified of the test results. BCM Persons should be aware that test results may be used in administrative hearings and court cases. Results also may be sent to state and/or federal agencies as required by applicable law.

BCM Persons who perform activities in the College's affiliated institutions are also subject to the substance and alcohol abuse policies of each such affiliated institution.

Article 8 Regulations Concerning Student Conduct

Article 8.1 Academic Rules – Honesty and integrity are essential to the academic functions of the SAHS. The following rules, which constitute the School's Honor Statement, are promulgated in the interest of protecting the validity of the College's grades and degrees, and to assist students in developing standards and attitudes appropriate to academic life and the practice of health care. Violation of academic rules can result in dismissal from the College.

- No student shall receive assistance not authorized by an instructor in the preparation of any assignment, laboratory exercise, report, or examination submitted as a requirement for an academic course or rotation.
- No student shall knowingly give unauthorized assistance to another student in such preparation.

- No person shall sell, give, lend, or otherwise furnish to any unauthorized person material that can be shown to contain the questions or answers to any examination scheduled to be given at any subsequent date, in any course of study offered by the SAHS, excluding questions and answers from tests previously administered when supplied by the department.
- Any persons taking, or attempting to take, steal, or otherwise procure in any unauthorized manner any material pertaining to the conduct of a class, including examinations, laboratory equipment, etc., shall be in violation of this regulation.
- Plagiarism is prohibited. Plagiarism includes “an act or instance of using or closely imitating the language and thoughts of another author without authorization and the representation of the author’s words as one’s own, as by not crediting the original author.” (dictionary.com).

Article 8.2 Non-Academic Rules – The rules of conduct listed below are intended for all students; however, it is hoped that all persons within the College complex, faculty and students alike, will adhere to these rules. Any student who feels that any person’s conduct is not in keeping with appropriate and acceptable behavior in the areas listed below, either in an academic or non-academic setting should notify the relevant Program Director, the Dean, or other appropriate college official depending on the nature of the offense.

Students must continually maintain congruence with all laws and regulations. Conduct that fails to maintain congruence will be reported to the appropriate State regulatory authority as required.

Article 8.3 Disorderly Assembly – No person shall assemble on campus for the purpose of causing a riot or destruction or disorderly diversion that interferes with the normal educational process and operation of the College. This does not deny any student(s) the right of peaceful assembly in accordance with College policy. Likewise, no person or group of persons shall obstruct the free movement of other persons about the campus, interfere with the use of College facilities, or prevent the normal operation of the College.

Article 8.4 Prohibited Conduct – When violation of any federal, state, or local law by a student indicates that the student’s continued presence on campus creates a substantial likelihood of danger to the educational process of the College community; the College may institute disciplinary action.

Behavior that disrupts the academic pursuits, or infringes upon the privacy, rights, or privileges of other persons is prohibited. In this regard:

- No student shall push, strike, physically assault, haze or threaten any member of the faculty, staff, or student body or any visitor to the College community.
- Bullying behavior is prohibited, whether it is emotional, verbal, physical, or cyber.
- Drunken misbehavior on College property, at functions sponsored by the College or any recognized College organization is prohibited.
- Conduct which is lewd, indecent, or obscene, or which is offensive to the prevailing standards of an academic community is prohibited.
- No student shall interfere with, or fail to cooperate with, any properly identified College faculty or staff personnel while these persons are in the performance of their duties.
- Dress shall be primarily a matter of individual judgment, but within acceptable standards of good taste. Students are expected to be neat and clean. Students not meeting clinical department standards of dress may be denied access to patients and may thereby jeopardize their grade and satisfactory completion of the rotation or elective. Allowances may be made for mandated dress codes by some religions. Students should ask their Program Director for information on religion-related dress code allowances.
- The use, possession, or distribution of narcotics, amphetamines, barbiturates, marijuana, hallucinogens, and any other dangerous or controlled drugs, not prescribed by a properly licensed healthcare provider, is prohibited.
- Malicious damage or destruction of property belonging to the College or to its affiliated institutions is prohibited.
- Fire and Explosion Safety

- No student shall tamper with fire safety equipment.
- No student shall set or cause to be set any unauthorized fire in or on College property.
- The possession or use of firearms, fireworks, or explosives on College property is strictly forbidden.
- No student shall make, or cause to be made, a false fire alarm.
- Gambling is prohibited on College property.
- Consumption of alcoholic beverages is prohibited on College property.
- No person shall take, attempt to take, or keep in his or her possession, items of College property or items belonging to students, faculty, staff or student groups without proper authorization.
- No student shall make unauthorized entry into any College building, office or other facility, nor shall any person remain without authorization in any building after normal closing hours.
- No person shall make unauthorized use of any College facility. Upon appropriate notice by College officials, authorization for the use of College facilities may be withdrawn or otherwise restricted.

Additional prohibited conduct includes:

- Dishonesty.
- Serious breach of trust or confidence.
- Serious misconduct, misrepresentation, or failure in personal actions, or in meeting obligations that raise serious unresolved doubts about the integrity, character and faithfulness of the student in meeting the overall obligations of a healthcare career are all considered inappropriate behavior.
- Any violation of the College's Substance and Alcohol Abuse Policy (see Article 7.9)

Illegal, unethical, or professionally inappropriate behavior outside the BCM community may be considered and addressed.

Article 8.5 Personal Electronic Devices - The use of personal electronic devices must be consistent with the needs of the healthcare learning environment. When engaged in patient care, providers are expected to provide their uninterrupted, full attention to the patient for whom they are caring. It is not acceptable to engage in any activity that is not directly related to the care of the patient.

Classroom/seminars:

1. Electronic devices are prohibited except for approved curricular purposes. Accessing other forms of information (e.g., internet search, database search, email communications) are restricted to the policy of the individual instructor.
2. Video/audio recording is strictly prohibited. Instructors may allow limited video/audio recording in certain situations. However, the instructor must give explicit permission, which applies only to that particular class/session/event, and does not apply to any other situation.

Patient care areas:

1. When engaged in direct patient care that is intensive in nature (e.g., anesthesia administration):
 - a. Electronic personal communication (e.g., voice call, text message, email) is strictly prohibited.
 - b. All electronic personal communication must occur while on breaks.
 - c. Utilization of electronic/computing devices (e.g., smart phone) to access reference information (e.g., pharmacologic information, calculations, disease processes) to facilitate care for the current patient is discouraged. At faculty discretion, it will be permitted provided constant vigilance to patient status/care is maintained at all times.

The provider must immediately display device screen for verification that appropriate reference information is being accessed.

- d. Reading materials unrelated to a patient's care during anesthesia is prohibited.
2. When engaged in direct patient care occurring in a clinic or hospital ward environment (e.g., clinic, preoperative screening clinic, etc.):
 - a. Electronic personal communication (e.g., voice call, text message, email) is strictly prohibited.
 - b. All personal electronic communication must occur while on breaks.
 - c. Utilization of electronic/computing devices (e.g., smart phone) to access reference information (e.g., pharmacologic information, calculations, disease processes) to facilitate care for the current patient is permissible.
3. When not engaged in direct patient care:
 - a. Audible electronic personal communication is prohibited.
 - b. Text messaging is acceptable provided it does not disrupt the work environment.
4. To protect privacy and confidentiality of patients, guests, family members, and staff, the use of a personal smart phone for photographs (e.g., patients, medical records, surgery schedule), digital images, videos, and other types of voice or digital recording, is strictly prohibited in the clinical facilities. Healthcare facility-approved photographic equipment may be used in accordance with facility policy. Any violation of this policy, or the HIPAA requirements regarding protected health information (PHI), is grounds for immediate termination from Baylor College of Medicine.

Article 8.6 Falsification of College Records – Intentional falsification of any records used by the College relative to a student's enrollment, performance, and graduation is prohibited.

- Students must complete all College records honestly.
- No student shall alter, counterfeit, forge, falsify or cause to be altered any record, form, or document used by the College.

Article 8.7 Requirement to Report Arrests or Convictions Immediately – Allied Health students must report any criminal offense allegations or convictions, including those pending appeal, to their respective Program Director immediately (i.e., within 24 hours). Offenses required to be reported include any instance in which the student has been:

- Cited or charged with any violation of the law
- Arrested or have any pending criminal charges
- Convicted of a misdemeanor or felony
- Sentenced to serve jail or prison time
- Subject of a court martial

Students are not required to report class C misdemeanor traffic violations.

Article 8.8 Review of Student Behavior – It is the responsibility of the SAHS to ensure that its students refrain from engaging in prohibited behavior. Students will be held accountable for their own actions. If a student is engaged in prohibited behavior, it shall be brought to the attention of the relevant Program Director or the Dean. The Dean, in conjunction with the Program Director and or other relevant faculty members, when appropriate, will investigate and review the allegations. If allegations prove to be frivolous, lacking in credibility, or personal in nature, the matter may be dismissed or handled informally. If the allegations are deemed to be of a serious nature and appear to be valid, the Program Director or the Dean may require the student to refrain from clinical activities or restrict contact with certain individuals. A student may be placed on administrative probation, suspended, or dismissed from the College for engaging in prohibited behavior such as discussed in Article 8. The outcome of the investigation and decision(s) by the Dean are final. Decisions of the Dean may be appealed through the Adverse Academic Action Appeal Procedure.

The full Student Grievances Policy is available in the BCM Policy and Procedure Manual.

http://intranet.bcm.edu/index.cfm?fuseaction=Policies.Display_Policy&Policy_Number=23.1.08

Article 8.9 Acceptable Use Policy – Access to computers, information systems and networks owned or operated College impose certain responsibilities and obligations on those granted such access. An individual user's access must always be in furtherance of the user's responsibilities at the College. Use by BCM personnel, or third parties granted access by BCM, should always be legal, ethical, academically honest and in accord with community or professional standards.

No use of BCM computers, information systems and networks should be made that would subject the user or BCM to any legal action or which would be generally perceived as improper or inappropriate. Use of BCM computers, information systems and networks must be consistent with the intellectual property rights of the BCM, other BCM users and third parties. The rights of other Authorized Users to access the BCM computers, information systems and networks must be respected, and each user should consider such other users' rights and needs with respect to shared resources. Violations of the AUP may result in a range of disciplinary actions including informal warning, formal warning, temporary or permanent suspension of access to the College's equipment, suspension or dismissal from the user's position with the College or criminal prosecution.

The above summary statement is not to be construed as a replacement for the detailed policy. The full Acceptable Use Policy is available in the BCM Policy and Procedure Manual http://intranet.bcm.tmc.edu/index.cfm?fuseaction=Policies.Display_Policy&policy_number=12.2.01).

Article 8.10 Use of Allied Health Student Listserv – Official class listservs (e.g. pa14-L, bsdn13-L, msdn14-L, or msop14-L) are designed strictly to transmit messages related to program activities. Do not exploit listservs for purposes beyond their intended scope, such as to distribute unsolicited electronic communications. Unauthorized usage includes:

- Any solicitation shall not be allowed, as indicated in the BCM Policy and Procedures Manual Section 11.2.10: "Internal Solicitations". Baylor College of Medicine prohibits unauthorized solicitations of any sort or distribution of literature by any college employees, students or any other person or persons on college premises. Solicitation is defined to include the following:
 - Sale of goods and services
 - Collection of debt
 - Solicitation of gifts or charitable contributions
 - Solicitation in support of any candidate, political party, or political action committee
 - Circulation of petitions
 - Solicitation of membership in non-Baylor organizations
 - Distribution or display of product samples or catalogues not related to a program of the college
- Postings originated by non-BCM personnel are expressly prohibited without approval by the student's program director.
- Posting of copyrighted materials is expressly prohibited by penalty of law. (e.g., text that is down-loaded from web sites, or taken from books, journals, or magazines)
- Posting of libelous material or material intended as a mechanism of attack shall not be allowed.
- Posting of chain letters or alerts of any kind shall not be allowed, including warnings of computer viruses.
- Posting of items of general interest that are not copyrighted (e.g., jokes, stories) but are not related to program activities.

These guidelines may be amended as the need arises.

In addition to the official class listserv, a non-official listserv is available for each class through which BCM will announce special events that are not part of your educational program. Students may use these listservs (ahc-na, ahc-op, ahc-pa) to communicate items that are not program activities yet may be of interest to student colleagues: a garage sale, the sale of used textbooks, need for a roommate, or suitable social functions. This listserv also uses BCM email addresses; therefore, the above provisions and good social and professional judgment apply. Specific guidelines may be added as needed. Non-official listservs are monitored by the SAHS as well as by the Office of Information Technology.

Article 8.11 Use of Copyrighted Materials – It is the policy of BCM to fully respect all rights that exist in any material protected by the copyright laws of the United States while also encouraging usage of the material that furthers its mission. BCM intends that College Members take full

advantage of all relevant licenses, exemptions and exclusions, such as the Fair Use exception, that are provided for under the copyright laws, to respect the proprietary rights of owners of copyrights and to refrain from actions that constitute infringement of copyright. If there is no applicable license, exemption or exclusion to permit use of the material, permission must be obtained from the copyright holder. Reference: BCM Policies and Procedures Manual 20.8.03.
http://intranet.bcm.edu/index.cfm?fuseaction=Policies.Display_Policy&Policy_Number=20.8.03.

Article 9 Faculty Review of Student Performance

Article 9.1 Academic Standards – Allied Health students are expected to meet standards of academic excellence established by the faculty of the SAHS. These standards are reviewed on an annual basis by the didactic and clinical faculty through the activities of the Allied Health Student Promotions Committee. The documentation of academic standard achievement is accomplished through scheduled programs of testing and the observation of student performance. The testing and observation of student performance may also be independent of courses and rotations. Various methods are employed to provide students with a measure of their progress as they transition through their education and training. Examples of these processes and instruments include: written examinations, skill-based tests, faculty observations, oral presentations, student self-assessments of progress, daily and/or monthly faculty performance evaluations, and quarterly evaluations by the student's academic advisor.

Article 9.2 Review of Didactic Performance – Each student's didactic performance is assessed by the faculty at specified intervals throughout the didactic phase of the curriculum. This is accomplished using methods of evaluation such as written, demonstrative, and verbal assessments of knowledge and skills. All course coordinators/directors will submit grades to the Program Director upon course completion. The responsible Program Director will report all grades to the Office of the Registrar. The responsible Program Director will prepare grade reports for review by the SAHS Dean and the Allied Health Student Promotions Committee. To begin clinical rotations, a student must achieve a passing grade in all courses in the didactic phase of the curriculum.

Article 9.3 Review of Clinical Performance – Each student's clinical performance will be evaluated by the program faculty as well as the clinical faculty and preceptors with whom they work. This will be accomplished using faculty performance evaluations, written examinations, patient simulation testing, and skills tests. These evaluations are submitted to the Program Director. The Allied Health Program faculty will review these evaluations, in conjunction with all other available credible information concerning the student's performance, to determine the grade. The responsible Program Director will submit grades to the Office of the Registrar. The responsible Program Director will prepare grade reports for review by the SAHS Dean and the Allied Health Student Promotions Committee. The responsible Program Director will take academic action consistent with Article 5.13.5 and may make recommendations to the Allied Health Student Promotions Committee regarding academic action(s). Any such recommendations are not final until accepted by the Allied Health Student Promotions Committee, at which point they become actions of the committee.

Article 9.4 Review of Professional Behavior – It is also the responsibility of the SAHS to ensure that its graduates meet local and national standards of professional conduct and responsibility. Students will be held accountable for their own actions. Integrity, respect, personal demeanor and appearance, accountability, collegial interaction, commitment to excellence, empathy and self-reflection have been identified as those professional attributes that facilitate honest communications, nurture confidentiality, facilitate boundary maintenance, encourage lifelong learning, engage in compassionate care provision, and acknowledge the value of others in the caring process. Students will be assessed, in part on their reliability, honesty and integrity, responsibility, and professional relationships with patients, families, and colleagues as well as their responsibility related to substance use and abuse. Any behavior that calls into question a student's professionalism or potential capabilities as a future healthcare provider will be reviewed by the Program Director, who may institute sanctions, with consultation as needed by the Dean, or may be referred by the Program Director to the Allied Health Student Promotions Committee if it has implications for didactic or clinical course grades or the student's standing in the program.

Article 9.5 Suspension of Clinical Privileges – In the event that the Program Director determines that a student's conduct has presented concerns regarding patient safety, substandard care, or was unprofessional in nature, the student will be placed on academic probation and the student's clinical education will be immediately suspended. The matter will be forwarded to the

Allied Health Student Promotions Committee for further consideration and action. Following the suspension of clinical privileges by the Program Director, the student is prohibited from any clinical activities pending the outcome of the deliberations of the Allied Health Student Promotions Committee. During the period between clinical privileges being suspended and the decision(s) of the Allied Health Student Promotions Committee, the student shall remain in good standing. The Program Director may require the student to participate or prohibit the student from participating in non-clinical activities during this time.

Article 9.6 Allied Health Student Promotions Committee – The Allied Health Student Promotions Committee is charged with monitoring student academic performance during the program. It is composed of faculty members from Basic Science and Clinical departments, usually including faculty from Basic Science courses, clinical rotations, and the SAHS Dean. The academic progress and professional development of each student is reviewed at regular intervals throughout each academic year. Grades, examination scores, narrative summaries and professional conduct and development are assessed to ensure the successful progress of each student. The Allied Health Student Promotions Committee has the primary responsibility for the following:

1. setting academic standards and requirements necessary for promotion and graduation;
2. recommending qualified students for promotion;
3. setting requirements for remedial work or revised academic course load for students whose academic work is unsatisfactory;
4. ensuring that each student demonstrates the academic competency of a nurse anesthetist, physician assistant, or orthotist/prosthetist;
5. rendering a decision and taking action on students whose academic work is consistently unsatisfactory;
6. addressing conduct and professional behavior of students when brought for deliberation by a Program Director
7. proceeding with suspension, withdrawal, or dismissal of students;
8. recommending awarding of the Master's or Doctoral Degree, or appropriate certificate after careful review of academic records;
9. designating awarding of the Master of Science or Doctor of Nursing Practice degree with Highest Honor, High Honor and Honor for exceptional academic work throughout the period of education; and
10. reviewing the system of evaluation of student performance (i.e., grading system and narrative summaries).

The Allied Health Student Promotions Committee is scheduled to meet three times a year: at the end of the Fall term (December), at the end of the Spring Term (August), and in October to determine graduation status. Additional meetings may be called as deemed necessary

Article 9.7 Academic Performance – Periodic promotion and ultimately recommendation to the President of the College to grant the Master of Science or Doctor of Nursing Practice degree require the satisfactory completion of all required courses, examinations and credits as well as demonstration by the student that he or she is capable of conduct appropriate within the discipline for which he or she is receiving education and training.

In the case of a student whose academic performance has been unsatisfactory in one or more courses or clinical rotations, the Allied Health Student Promotions Committee may require the student to:

1. take a special make-up examination;
2. be placed on Academic Probation;
3. enroll in a remedial course of study;
4. repeat specific courses or rotations even if previously passed;
5. repeat an academic year of study;
6. withdraw from the College;
7. be dismissed from the College and not be allowed to pursue further studies at the institution; and/or

8. comply with other actions as appropriate.

Students who are required to repeat a didactic or clinical course are responsible for the same academic work and examinations as required of other students taking the course. It is contrary to policy to offer an examination or re-examination to a student who has been suspended, withdrawn, dismissed, or is on a leave of absence.

BCM publishes a course repeat policy to explicate the Baylor College of Medicine (BCM) criteria for calculating repeats in coursework. The full policy is available in the BCM Policy and Procedure Manual.

http://intranet.bcm.edu/index.cfm?fuseaction=Policies.Display_Policy&Policy_Number=23.1.09

To be promoted and begin clinical courses, a student must achieve passing grades in all courses of the preclinical curriculum. All grades reflected on the transcript including remedial and repeated courses are counted. Students required to repeat an entire year of study are expected to complete successfully all the courses in the curriculum. Request for dispensation and waivers of this latter policy must be made in writing and requires advance approval of the Allied Health Student Promotions Committee.

The Allied Health Student Promotions Committee reviews at regular intervals all grades and evaluations regarding academic and clinical performance. Both academic performance and professional behavior by a student in connection with his or her academic and clinical activities will be considered by the committee under these procedures. Unacceptable behaviors include those listed under Article 8 “Regulations Concerning Student Conduct,” as well as misrepresentation, distortions or serious omissions in data reports, research and clinical care; abuse, misrepresentation or seriously improper conduct in relation to patients or colleagues in clinical training or academic settings; repeated failures without adequate excuse to meet assigned obligations in professional, clinical, and research clinical training; and breaches of other standards of professional conduct and responsibility.

Article 9.8 Policies and Procedures Concerning Rights, Responsibilities, and Appeals to SAHS Student Promotions Committee Actions – In general, procedures regarding appeals are implemented with every effort made to ensure fairness, objectivity and thoroughness. The confidentiality of these procedures is maintained to every extent possible and consistent with other obligations of the faculty and the College, including the requirements of the Health Insurance Portability and Accountability Act of 1996 (HIPAA).

These are academic, not legal, procedural matters. Any evidence that a review committee deems relevant and trustworthy may be considered. In any matter under appeal, the review committee has access to and may consider a student's academic and disciplinary record as a whole. Although a student may seek legal advice with respect to these procedures, a student may not be represented by an attorney before a reviewing body and attorneys do not attend interviews of a student or other witnesses. The student must represent him/herself. The Dean and/or a Department Chair with whom the Program is affiliated may attend hearing(s) held by the Appeals Review Subcommittee, which is described below. Information obtained in confidence by a student counseling service or other health care providers, whether medical or psychiatric, will not be sought or disclosed to a person or committee without the student's consent. Any information relative to a student's health history that is requested in such instances will be managed in accordance with relevant State and Federal laws, including HIPAA regulations. The absence of such information may preclude the person or committee from considering a medical excuse. A reviewing body, in connection with its deliberations or as part of a remedial or corrective action, may require a student to obtain medical or psychiatric assistance and may require a student to consent to disclosure of relevant information from that health care provider in order for the committee to make its final recommendation. Procedures and timelines outlined below may be somewhat modified by prior notice to the student when necessary to achieve a full and fair resolution of the matter. Remedial and corrective actions and sanctions that may be imposed under the appeals procedure include, but are not limited to, academic remediation, personal counseling, reprimand, warning, probation, suspension, withdrawal and dismissal. The Allied Health Student Promotions Committee is responsible for assessing the satisfactory completion of the conditions of any probation and its termination.

Article 9.9 Actions, Sanctions, and Appeals Regarding Student Performance

1. Grades are rendered by course directors and reflect the students' performance. They become official when accepted by the Program Director. Students' concerns about grades or evaluations of academic or clinical performance should be directed to the course director. If such concerns are not satisfactorily resolved, the student should bring the matter to the attention of the Program Director who may consult with the course director to discuss the grade, evaluation or report to assist the student in understanding and resolving the matter.
2. The Program Director takes academic action on any student who demonstrates a deficiency of academic or clinical performance, or where concerns arise about inappropriate, irresponsible, or unprofessional conduct. The student is notified in writing of the decision, including rationale for the decision, and action regarding recommendations or sanctions. Sanctions imposed by Program Directors may include, but are not limited to, reprimand, probation, or suspension. Formal actions taken by a Program Director are reported to the SAHS Dean and the AHSPC.
3. The Allied Health Student Promotions Committee, upon their review of the student's performance, may impose other sanctions in addition to those taken by the Program Director including, but not limited to, requirements to remediate or repeat courses, withdraw, or be dismissed.
4. The Program Director shall be available to counsel students whose academic work has been deemed unsatisfactory. The Dean shall be available to interpret the actions of the Allied Health Student Promotions Committee to the student, to inform students of written narrative comments by the faculty concerning unsatisfactory academic work, to review with a student the steps in the Appeal process and to counsel students.
5. Decisions of the Program Director or AHSPC may be appealed through the Adverse Academic Action Appeal Procedure.

The full Student Grievances Policy is available in the BCM Policy and Procedure Manual.

http://intranet.bcm.edu/index.cfm?fuseaction=Policies.Display_Policy&Policy_Number=23.1.08

Article 10 Academic Standards for Financial Aid Eligibility

All students enrolled in the School of Allied Health Sciences are considered to be making satisfactory progress unless otherwise determined by the School of Allied Health Sciences Student Promotions Committee.

This policy has been developed to ensure that the BCM Student Financial Aid Program meets or exceeds the requirements set forth by federal regulations governing Academic Standards of Progress for Financial Aid Eligibility for students who receive Title IV funding. The full Financial Responsibilities, Financial Aid Eligibility, and Satisfactory Academic Progress Requirements for Students is available in the BCM Policy and Procedure Manual 23.1.02

http://intranet.bcm.edu/index.cfm?fuseaction=Policies.Display_Policy&Policy_Number=23.1.02.

This policy applies to those students receiving Title IV financial aid. The policy may also serve as a guide to regulate non-Title IV or private funding.

Article 10.1 Time Limits on Financial Aid Eligibility – A student will be permitted a time limit of 150% the length of the standard required length of study as a full-time student to complete the program for which he or she is enrolled.

	Standard	Maximum
Master of Science/Physician Assistant	30 Months	45 Months
Master of Science/Orthotics & Prosthetics	30 Months	45 Months
Doctor of Nursing Practice/Nurse Anesthesia	36 Months	54 Months

Transfer Physician Assistant students completing only the Clinical Phase of training at Baylor College of Medicine will be permitted a time limit of 150% the length of the standard required length of study to complete the clinical phase. The Nurse Anesthesia and Orthotics/Prosthetics programs do not accept transfer students into the clinical phase of their programs.

	Standard	Maximum
Clinical Phase – Physician Assistant	17 Months	25 Months

There is no lightened-load program in the School of Allied Health Sciences.

Students electing a leave of absence for academic or personal reasons will be measured for financial aid eligibility based on the timeline during their full-time academic enrollment only.

A student failing to complete the program by the maximum time permitted will be suspended from financial aid eligibility.

Article 10.2 Grade Requirements upon Completion of Courses - School of Allied Health Sciences students will be evaluated for Academic Progress as follows during their academic career:

Physician Assistant Students and Orthotic and Prosthetic Students

- December, upon completion of Fall 1
- July, upon completion of Spring 1
- December, upon completion of Fall 2
- June, upon completion of Spring 2
- November, upon completion of clinical training in Fall 3 for students with incomplete requirements

Nurse Anesthesia Students

- July, upon completion of Spring 1
- December, upon completion of Fall 1
- July, upon completion of Spring 2
- December, upon completion of 5 clinical rotations
- July, upon completion of 12 clinical rotations
- December, 3rd-year students with incomplete requirements

Grade Requirements

A student's academic progress for financial aid purposes will be reviewed in accordance with the guidelines used by the Allied Health Sciences Student Promotions Committee. Students can apply for federal aid at any time during their enrollment period prior to the deadlines posted. Students repeating a semester or an academic year are eligible to apply for aid. Students repeating for a third time in a semester or academic year are not eligible for federal aid, although they may apply for an outside alternative loan.

Any BCM student who fails to meet grade and/or course requirements will be placed on financial aid probation for a full year by the Director of the Office of Financial Aid. Students on probation for financial aid eligibility must, by the end of the probationary enrollment year, attain satisfactory academic status. Failure to do so will result in suspension of financial aid eligibility by the Director of the Office of Financial Aid.

The School of Allied Health Sciences assigns letter grades and a student may be placed on academic probation or warning due to a GPA below 3.0. Students are considered to be making Satisfactory Academic Progress until and unless they are dismissed from their program. Students are required to successfully complete all required coursework.

Article 10.3 Appeals of Financial Aid Probation or Suspension – Students who do not meet the minimum standards for satisfactory academic progress may appeal to the Office of Student Financial Aid for reinstatement of their financial aid eligibility. Circumstances which may be considered as a basis for an appeal may include family emergency, death in the student's immediate family, a student's medical illness or injury, or other undue hardships. Appeals should be submitted in writing and must include relevant documentation. Office of the Student Financial Aid must receive the written appeal no later than 60-days after the start of the academic period for which the financial aid is requested. Appeal decisions will follow the procedures outlined in BCM's Student Grievance Policy (Other Academic or Student Services Issues Section). Refer to BCM's Student Grievances website for the policy and additional details (<https://www.bcm.edu/education/academic-faculty-affairs/student-services/student-grievances>).

Article 10.4 Compliance – The Office of Student Financial Aid in coordination with the Office of Compliance will monitor BCM's Student Financial Aid Program's compliance with the requirements set forth by federal regulations governing academic standards of progress for financial aid eligibility pertaining to students who receive Title IV funding.

Article 10.5 Institutional Refund Policy

Students who withdraw from school, go on a leave of absence for longer than 60 days, are dismissed or otherwise stop attending classes will have Tuition and the Facility Fee refunded as indicated below. Refunds are calculated based on the length of the enrollment period for which the students are charged. Students are charged in half-year increments.

- Withdraws prior to the first day of classes or never attends classes: **100 percent****
- Withdraws or stops attending during the first three weeks of classes: **90 percent****
- Withdraws or stops attending during the fourth week of classes: **80 percent****
- Withdraws or stops attending during the fifth week of classes: **70 percent****
- Withdraws or stops attending during the sixth week of classes: **60 percent****
- Withdraws or stops attending during the seventh week of classes: **50 percent****
- Withdraws or stops attending during the eighth through thirteenth weeks of classes: **25 percent****
- Withdraws or stops attending after the thirteenth week of classes: **No Refund***
- Ph.D. students are charged tuition for the number of months attended.

****Rounded to the nearest dollar**

Federal financial aid students who receive federal financial aid and do not complete at least 60 percent of the enrollment period for which they are charged are subject to return of Title IV funds calculation. This calculation allows for the refund of charges equal to the percentage of time remaining in the enrollment period.

Baylor College of Medicine determines the official date of a student's withdrawal and the official date a leave of absence begins (based on last class day of attendance). The Office of Student Financial Aid makes the refund and repayment calculations. Examples of refund calculations are maintained in the Office of Student Financial Aid and are available upon request.

Students who are placed on an official leave of absence may, and are encouraged to, continue their health insurance plan. These charges would be excluded from any refund calculation. Those who do not wish to continue their health insurance while on a leave of absence will have those charges pro-rated once the appropriate forms are filed with the Benefits Division.

If Title IV federal funds were used to pay institutional charges, any refund calculated must first be returned to the Title IV programs. The amount of the refund must be allocated to the Title IV programs in the following order:

- Unsubsidized Federal Stafford Loan Program
- Subsidized Federal Stafford Loan Program
- Federal Perkins Loan Program
- Any other Title IV program
- Other federal, state, private or institutional sources

Note: Only those programs administered by the College are listed above. All students are required to attend an exit interview prior to the date they stop attending the College. Group sessions are scheduled for graduating students. Students are responsible for calling to schedule their exit interviews and should ensure they schedule their appointments well in advance of their last day of attendance. Any refund due a student will be made either on the student's last day of attendance or mailed to the address provided.

Students who believe that individual circumstances warrant exception from published policy may send a letter of appeal to the director of Operational Accounting. Appeals will be reviewed and a decision made by the director of Operational Accounting.

Note: Any reference to the return of the Title IV federal aid is subject to change in order to comply with federal regulations.

SCHOOL OF ALLIED HEALTH SCIENCES



Course Descriptions Academic Year 2016-2017

This document includes all degree requirements for programs in the School of Allied Health Sciences, A table of contents is included below.

- Doctor of Nursing Practice Program-Nurse Anesthesia.....Page 2
- Orthotics and Prosthetics Program..... Page 14
- Physician Assistant Program Page 25



EDUCATION

Course Descriptions

[Baylor College of Medicine](#) > [Education](#) > [Schools](#) > [School of Allied Health Sciences](#) > [Programs](#)
> [Doctor of Nursing Practice Program-Nurse Anesthesia](#) > [Curriculum](#) > [Course Descriptions](#)

SHARE 

Advanced Health Assessment (NAAHA-63401)

This course focuses on the development of advanced practice nursing skills in health assessment for diverse populations. Critical thinking, diagnostic reasoning and communication techniques will be developed through individual and group interaction, as well as case-guided learning experiences.

Credit: 3 semester hours

Course Director: [Megan Bullerwell](https://www.bcm.edu/people/view/b16413cc-ffed-11e2-be68-080027880ca6/f407a69e-2528-11e3-ba52-005056b104be) <<https://www.bcm.edu/people/view/b16413cc-ffed-11e2-be68-080027880ca6/f407a69e-2528-11e3-ba52-005056b104be>>

Advanced Pathophysiology I (NPAT-62105)

This course focuses on the pathophysiological processes experienced throughout the lifespan. Evidence-based practice resulting from relevant research of pathophysiological disease states is incorporated to develop interventions and a plan of care for patients with health status alterations.

Credit: 2 semester hours

Course Director: [Rachel Davis](#)

Advanced Pathophysiology II (NPAT-62106)

This course focuses on the pathophysiological processes experienced throughout the lifespan. Evidence-based practice resulting from relevant research of pathophysiological disease states is incorporated to develop interventions and a plan of care for patients with health status alterations.

Credit: 2 semester hours

Course Director: [Rachel Davis](#)

Advanced Principles of Anesthesia (NANPA-65802)

This course builds on basic concepts and information covered in Principles of Anesthesia, including the evaluation and management of patients with increased complexity. Advanced principles of anesthesia are introduced and incorporated. Evidence-based practice will be utilized to formulate an anesthetic plan for increasingly complex surgical procedures and/or comorbidities, as well as patients of diverse populations.

Credit: 5 semester hours

Course Director: Donovan Earley

Anatomical Science I (AHANA-65101)

This course is designed to provide the student an extensive background in the fundamentals of human anatomy through lecture, small group laboratory, and independent study formats. Embryology coupled with structures of the upper and lower extremities, cardiovascular and pulmonary systems, abdomen and pelvis, and reproductive organs are described and illustrated in lecture followed by laboratory experiential learning that emphasizes the location, identification, function, and relationships of pertinent structures using cadavers, prosections, radiograph images, and static models. The course is intended to provide an anatomical basis for understanding the physical examination and structural changes associated with illness and injury of each major organ and body system.

Credit: 5 semester hours

Course Director: David Rowley <<https://www.bcm.edu/people/view/b174b210-ffed-11e2-be68-080027880ca6>>

Anatomical Science II (AHANA-62102)

This course is designed to provide the student an extensive background in the fundamentals of human anatomy utilizing lecture, small group laboratory, and independent study formats. Anatomic structures of the head and neck are described and illustrated in lecture followed by laboratory experiential learning to include location and identification as well as function and relationships of structures using cadavers, prosections, radiograph images, and static models. The course is intended to provide an anatomical basis for understanding the physical examination and structural changes associated with illness and injury of each major organ and body system.

Credit: 2 semester hours

Course Director: David Rowley <<https://www.bcm.edu/people/view/b174b210-ffed-11e2-be68-080027880ca6>>

Approaches to Healthcare Education (NAAHE-83107)

This course will introduce, contrast, and apply adult teaching-learning theories in the design of effective education. Innovative teaching strategies, including a web-based approach to education, will be incorporated to provide the student with tools to become an effective educator. Students will gain practical experience in planning and presenting educational projects and course development utilizing various technology mediums.

Credit: 3 semester hours

Course Director: Donovan Earley

Biomedical Instrumentation (NABMI-62603)

This course is designed to educate the student about the essentials of biomedical and instrument technologies commonly used in anesthesia practice.

Credit: 2 semester hours

Course Director: Megan Bullerwell <<https://www.bcm.edu/people/view/b16413cc-ffed-11e2-be68-080027880ca6/f407a69e-2528-11e3-ba52-005056b104be>>

Biostatistics (NBIOS-83110)

This course provides a comprehensive overview of frequently used descriptive and inferential biostatistical methods. The course includes application of the theories of measurement, statistical inference, and decision trees, which all contribute to better clinical decisions and improved patient care outcomes. Conceptual understanding, rather than computational ability, is the focus of the course. Development of an adequate vocabulary, an examination of fundamental principles, and a survey of widely used procedures or tools to extract information from data will form a basis for fruitful collaboration with a professional biostatistician when appropriate.

Credit: 3 semester hours

Course Director: Linda Harrington <<https://www.bcm.edu/people/view/38bb1530-a2b5-11e5-b8c7-005056b104be/f407a69e-2528-11e3-ba52-005056b104be>>

Clinical Biochemistry (AHBIO-63121)

This course is designed to provide the student with the basics of clinical biochemistry in order to prepare them for their further studies. The course will review basic organic chemistry pertinent to understanding metabolic pathways with emphasis on different aspects of clinical biochemistry including structure and function of proteins, enzyme kinetics, and the metabolism of carbohydrates, lipids and amino acids. Special attention will be given to the nutritional needs of humans.

Credit: 3 semester hours

Course Director: Kristina Hulten

Clinical Skills Inquiry (NACLO-61608)

This course is designed to acclimate beginning nurse anesthesia students to the clinical anesthesia arena. Basic clinical and geographical orientation is designed to facilitate the student transition from the didactic phase into the anesthesia provider role. Students will be given a checklist of objectives that must be accomplished during the orientation period. Under the guidance, direction and supervision of clinical faculty, patient care activities are strongly encouraged. Students will be assigned to four morning rotations at Ben Taub Hospital 4th floor general/trauma OR. Additionally, one morning rotation at the Michael E. DeBakey Veterans Affairs Medical Center is required. There are additional group learning experiences scheduled during Term 2 and Term 3 of Clinical Skills Inquiry.

Credit: 1 semester hour

Course Director: Amy Umnus <<https://www.bcm.edu/people/view/b273277b-ffed-11e2-be68-080027880ca6/f407a69e-2528-11e3-ba52-005056b104be>>

Comprehensive Examination in Anesthesia (NACEA-70810)

The comprehensive examination in anesthesia is given seven weeks prior to the date of graduation (i.e., the second Saturday in November for those graduating on December 31). This examination serves to assure continued development of the core fund of anesthetic knowledge, retention of previously introduced concepts and assimilation of the didactic curriculum into clinical practice. The student will be expected to demonstrate depth and breadth of knowledge of the practice of anesthesia.

Credit: none

Course Director: James Walker

Critical Concepts in Anesthesia I (NACCA-71802)

This course is designed to enhance the student's theoretic foundation and aid in the development of critical thinking abilities. The course consists of a series of clinically relevant reviews and examinations of critical anesthesia concepts in order to foster continued academic development and integration of theoretical knowledge into clinical practice. Concepts and principles pertinent to each examination will be formally reviewed with students on a monthly basis. Additionally, two core competency simulation assessments are utilized to evaluate learner integration of core anesthesia concepts into simulated clinical practice.

Credit: 1 semester hour

Course Director: Amy Umnus <<https://www.bcm.edu/people/view/b273277b-ffed-11e2-be68-080027880ca6/f407a69e-2528-11e3-ba52-005056b104be>>

Critical Concepts in Anesthesia II (NACCA-71805)

This course is designed to enhance the student's theoretic foundation and aid in the development of critical thinking abilities. The course consists of a series of clinically relevant reviews and examinations of critical anesthesia concepts in order to foster continued academic development and integration of theoretical knowledge into clinical practice. Concepts and principles pertinent to each examination will be formally reviewed with students on a monthly basis. Additionally, two core competency simulation assessments are utilized to evaluate learner integration of core anesthesia concepts into simulated clinical practice.

Credit: 1 semester hour

Course Director: Amy Umnus <<https://www.bcm.edu/people/view/b273277b-ffed-11e2-be68-080027880ca6/f407a69e-2528-11e3-ba52-005056b104be>>

DNP Project in Anesthesia I (NAPIA-83901)

This course emphasizes the synthesis, critique, and application of learning gained in the program to support quality clinical practice and organizational systems. The DNP candidate, in consultation with their academic advisor, proposes a project that begins with a thorough and scientific evaluation of a current healthcare issue requested by an approved healthcare entity. Following approval of the proposal by the academic chair and project committee, the DNP candidate will complete the doctoral project within two academic years as evidenced by the rendering of recommendation(s) or design of an innovative clinical practice or program solving an actual healthcare issue.

Credit: 3 semester hours

Course Director: James Walker

DNP Project in Anesthesia II (NAPIA-84902)

This course emphasizes the synthesis, critique, and application of learning gained in the program to support quality clinical practice and organizational systems. The DNP candidate, in consultation with their academic advisor, proposes a project that begins with a thorough and scientific evaluation of a current healthcare issue requested by an approved healthcare entity. Following approval of the proposal by the academic chair and project committee, the DNP candidate will complete the doctoral project within two academic years as evidenced by the rendering of recommendation(s) or design of an innovative clinical practice or program solving an actual healthcare issue.

Credit: 4 semester hours

Course Director: James Walker

Decision Science and Informatics in Healthcare (NHIDS-83109)

This course introduces students to concepts related to health information system management and provides an overview of the role of information systems in healthcare organizations. Coursework emphasizes the integration of evidence-based research into clinical decision making and the influence of information systems on health outcomes. This course explores technical, organizational,

and cost-benefit issues related to healthcare information systems, including clinical decision-support, integrated networking and distributed computing technologies, telemedicine applications, and artificial intelligence solutions.

Credit: 3 semester hours

Course Director: Linda Harrington <<https://www.bcm.edu/people/view/38bb1530-a2b5-11e5-b8c7-005056b104be/f407a69e-2528-11e3-ba52-005056b104be>>

Emerging Sciences in Healthcare (NEMER-82111)

This course surveys emerging sciences and technologies in health care including genetics, genomics, proteomics, robotics, stem cells, nanotechnology, tissue engineering, patient safety, and emerging mechanical technologies. Additional topics will be covered as they emerge.

Credit: 2 semester hours

Course Director: Linda Harrington <<https://www.bcm.edu/people/view/38bb1530-a2b5-11e5-b8c7-005056b104be/f407a69e-2528-11e3-ba52-005056b104be>>

Ethical and Multicultural Healthcare (NAEMH-83106)

This course will provide a basic theoretical framework that will enable students to apply multicultural health care principles and concepts in their professional practice. An awareness of cultural influence on the biological, psychological, sociological, intellectual, and spiritual dimensions of the individual will be developed and specific health care values and practices of different cultural groups will be identified. International healthcare perspectives and issues will be explored.

Credit: 3 semester hours

Course Director: Donovan Earley <<https://www.bcm.edu/people/view/b16f23c0-ffed-11e2-be68-080027880ca6/f407a69e-2528-11e3-ba52-005056b104be>>

Evidence-Based Anesthesia Practice (NAEBP-72804)

This course is designed to enhance the student's theoretic and clinical foundations via an incorporation of evidence-based theory into clinical anesthesia practice. The course requires a review and synthesis of current published research germane to the student's area of interest for their capstone project. Students are required to develop, under faculty advisement, in-depth presentations utilizing an evidence-based framework that integrates research evidence into current clinical practice. Presentations are semi-formal requiring submission of a PowerPoint presentation with imbedded voice track. The option of presenting in person will also be afforded to students.

Credit: 2 semester hour

Course Director: James Walker

Human Physiology I (AHPHY-64221)

This course is designed to provide the student an extensive understanding of human physiology from the cellular to the organ and body systems level with a focus on the mechanisms of normal organ function and the consequences of malfunction of the nervous, cardiovascular, respiratory, renal and digestive systems along with temperature regulation. Clinical examples that illustrate the consequences of malfunction are used to emphasize, by comparison, normal physiology.

Credits: 4 semester hours

Course Director: David Johnson

Human Physiology II (AHPHY-64221)

This course is designed to provide an extensive understanding of human physiology from the cellular to the organ and body systems level with a major emphasis on the mechanisms of normal organ function and the consequences of malfunction of the endocrine and reproductive systems along with energy and metabolism, bone, and the physiology of normal pregnancy. Clinical examples that illustrate the consequences of malfunction are used to emphasize, by comparison, normal physiology.

Credits: 2 semester hours

Course Director: David Johnson

Immunology for Allied Health (AHIMM-62131)

This course will provide an overview of basic immunological concepts including components of the immune system, innate, and adaptive immune responses. The immune responses against infectious microbes, as well as immunologic diseases will also be addressed.

Credits: 2 semester hours

Course Director: Donovan Earley

Influencing Healthcare Policy (NAIHP-83104)

This course will provide an overview for understanding healthcare policy, organization, and economics within a systems analysis framework. Current literature and research related to healthcare policy development and healthcare delivery systems will be examined. The role of leadership in policy development and in changing healthcare delivery and healthcare education systems will be highlighted.

Credit: 3 semester hours

Course Director: James Walker

Leading and Managing Healthcare Systems (NLMHS-83105)

This course provides in-depth analysis and synthesis of the healthcare delivery system emphasizing improvement of healthcare delivery and access. It examines the complex organizational dynamics and structures that predicate the interaction among major components of the United States healthcare system. Individual strategies for effectively leading and managing organizational change, building strong organizational culture, developing effective teams, resolving conflicts, implementing effective motivational systems and nurturing a learning organization are investigated.

Credit: 3 semester hours

Course Director: James Walker

Nervous System (NANEU-66301)

This comprehensive course is a survey of the nervous system. It incorporates not only basic science disciplines, such as, neuroanatomy, chemistry, and physiology, but also neuropathology, pathophysiology, and pharmacology.

Credit: 6 semester hours

Course Director: Paul Pfaffinger

Pharmacology in Advanced Practice I (NANAP-63901)

This course begins with an in-depth study of basic human pharmacology principles. The course progresses to detailed explorations of the uptake, distribution, biotransformation, and elimination of currently used clinical anesthesia pharmacotherapeutics. Pharmacogenetic disorders with specific anesthesia implications are examined. Various agents affecting the autonomic nervous system are detailed.

Credit: 3 semester hours

Course Director: Rachel Davis

Pharmacology in Advanced Practice II (NANAP-64902)

This course is an in-depth study of the pharmacology of drugs currently used in human medicine. The student should gain an understanding of the uptake, distribution, biotransformation, and elimination of drugs that are currently prescribed for specific human conditions, such as endocrine disorders, hypertension, rheumatic/inflammatory disorders & obstetrics. An in-depth study of the pharmacology of drugs currently utilized in the management of central nervous system disorders is included. Cancer chemotherapeutic and antimicrobial agents are addressed along with attendant anesthetic implications. The pharmacology of drugs used to treat cardiovascular conditions and hemostatic derangements is also discussed. Phytopharmaceuticals, toxicology and agents that may be encountered in biological and chemical warfare are also described.

Credit: 4 semester hours

Course Director: Rachel Davis

Physics in Anesthesia (NAPAP-61602)

This course is designed to review and reinforce concepts in physics specifically as it relates to anesthesia. Clinical concepts and application are emphasized and reinforced.

Credit: 1 semester hour

Course Director: Rachel Davis

Principles of Anesthesia (NANPA-64801)

This course investigates the basic concepts in anesthesia care delivery including pre-anesthetic and post-anesthetic evaluation, premedication, formulation of anesthesia management plans, anesthetic techniques and procedures, equipment requirements, monitoring, and record keeping.

Credit: 4 semester hours

Course Director: Donovan Earley

Professional Philosophy and Scholarship (NAPAS-83102)

This course will draw upon the disciplines of philosophy, ethics, and the social sciences to examine key concepts of professional practice that form the foundations for many advanced practice roles in nursing and anesthesia, with a focus on leadership and scholarship. Emergence and foundations of nurse anesthesia practice will be explored. Scholarship within the discipline will be investigated.

Credit: 3 semester hours

Course Director: Aimee Langley <<https://www.bcm.edu/people/view/b15595ce-ffed-11e2-be68-080027880ca6/f407a69e-2528-11e3-ba52-005056b104be>>

Quality Outcomes Management (NAQOM-83108)

This course analyzes problems raised by various levels of quality found in healthcare systems, educational institutions and other organizations. It includes knowledge about the major theories for the measurement of quality. This course will also explore the definitions of quality, how to measure quality, analyze outcome data, and implement improvements in a healthcare system.

Credit: 3 semester hours

Course Director: Linda Harrington <<https://www.bcm.edu/people/view/38bb1530-a2b5-11e5-b8c7-005056b104be/f407a69e-2528-11e3-ba52-005056b104be>>

Radiology for Allied Health (NARAD-61151)

This course acquaints the student with basic principles involved in, and the clinical value of, various radiologic examinations. The module will emphasize normal radiographic anatomy as compared with abnormalities and findings associated with various disease states. The primary effort is directed at teaching students how to use radiology examinations in evaluating various medical diseases/disorders.

Credit: 1 semester hour

Course Director: Aimee Langley <<https://www.bcm.edu/people/view/b15595ce-ffed-11e2-be68-080027880ca6/f407a69e-2528-11e3-ba52-005056b104be>>

Seminars in Anesthesia (NASEM-71801)

This course consists of weekly anesthesia capstone project presentations by students. Students will take a pre-test on the topic on Blackboard, and then a post-test following the presentation. The course is designed to inform the student regarding current, clinically-relevant research and anesthesia applications. The course is designed to enhance the student's theoretic foundation as well as development of critical thinking abilities.

Credit: 1 semester hour

Course Director: James Walker

Theories and Concepts in Healthcare (NPTHC-83101)

This course reviews the history and evolution of the philosophy of science in nursing, laying the foundation for the generation and expansion of new professional knowledge that will guide evidence-based practice for nursing and healthcare. Selected approaches to concept/theory development, analysis, and evaluation are examined and applied. Concepts related to acceptable theories in the scientific community and epistemology and ontology of nursing will be explored. This course allows doctoral students to gain appreciation for the underpinnings of philosophical frameworks and epistemological paradigms in future research.

Credit: 3 semester hours

Course Director: James Walker

Translational Research (NATRR-83112)

This course is designed to provide the tools for the advanced practice nurse to evaluate, translate and integrate published research results into clinical practice. During the course, students will learn how to conceptualize clinical practice problems, how to transform these problems into answerable clinical research questions, how to search for the best clinical evidence, how to assess clinical evidence using basic epidemiological, biostatistical and scientific principles and how to integrate the research results with patients' values and preferences across clinical sites. Critical appraisal and research synthesis will provide understanding of models used to inform evidence-based advanced practice nursing. The course will culminate in development of the capstone project proposal.

Credit: 3 semester hours

Course Director: Linda Harrington <<https://www.bcm.edu/people/view/38bb1530-a2b5-11e5-b8c7-005056b104be/f407a69e-2528-11e3-ba52-005056b104be>>

Doctor of Nursing Practice Program-Nurse Anesthesia

Phone: (713) 798-8650

Fax: (713) 798-2743

Email: crna@bcm.edu

Wondering if a DNP is right for you? ➔

</education/schools/school-of-allied-health-sciences/programs/doctor-of-nursing-practice-nurse-anesthesia/admissions/information-sessions>

Come to one of our information sessions to learn more.

Related Sites

- School of Allied Health Sciences
- American Association for Nurse Anesthetists <<http://www.aana.com/Pages/default.aspx>>
- Texas Association of Nurse Anesthetists <<http://www.txana.org/>>
- Texas Board of Nursing <<http://www.bon.state.tx.us/>>



</about-us/life-in-houston>

Life in Houston ➔

</about-us/life-in-houston>

When you think of Houston, do you envision cowboys and tumbleweeds? Learn what life in Houston is really like.

Orthotics and Prosthetics Program

Course Descriptions for AY 2016-2017

Anatomical Sciences (for O&P)

OPANA 63101

Credit hrs: 3

Course Director: David Rowley, PhD

Course Description:

- Anatomical Sciences for O&P is designed to provide the student an extensive background in the fundamentals of human anatomy. The course is presented in lecture, small group laboratory, and independent study format. Anatomic structures are reviewed in lecture. The student is then expected to locate, identify and explain the function and relationships of structures using cadavers, dissections, radiograph images, and static models. The course is structured to provide an anatomical basis for understanding the physical examination and structural changes associated with illness and injury of each major organ and body system.

Cultural Competency

OPCC-61401

Credit hrs: 1

Course Director: Carl Fasser, PA

Course Description:

- The course introduces students to issues surrounding cultural awareness and sensitivity pertaining to the diversity and uniqueness of populations to be encountered as health care practitioners and elsewhere through lectures, discussions, small group activities, and participation in community events. Specifically, the course explores personal bias, communication styles, belief systems, alternative health care practices, family roles, and the relationship of these issues to perceptions of culture, socioeconomic status, and provision of healthcare.

Health Behavioral Counseling

AHHBC 62201

Credit hrs: 2

Course Director: Beth Garland, PhD

Course Description:

- This course explores the theory and practice of counseling for health behavior change with a focus on application of Motivational Interviewing skills to cancer-related and other health-risk behaviors. The stages of behavior change are introduced using the framework of the Transtheoretical Model along with social learning theory. Elements of the therapeutic alliance and the principles of harm reduction are introduced along with socializing the patient to motivational health behavior change counseling. Modeling through role play is used to develop and refine a student's ability to identify risk, assess readiness for change, and offer messages designed to strengthen the patient's commitment to change. Observations of self-help and patient support group sessions are used to further socialize students to the degree to which individuals are committed to change. These experiences shall help the student develop an intimate understanding of the process of change and thereby increase empathy for patients attempting to improve their own health behaviors and adhere to challenging treatment regimens.

Biomechanics Fundamentals

OPBMF 62101

Credit hrs: 2

Course Director: Jared A. Howell, MS, CPO

Course Description:

- Biomechanics Fundamentals introduces the study and practice of evaluating and quantifying human movement through both simple and complex means. Biomechanics Fundamentals begins with an introduction to biomechanics as a discipline and explores application to human movements. Approaches include: static skeletal, muscular, and neurological considerations for human movement, dynamic force distribution, materials behavior, and lever arms. Presentations of clinical scenarios and corresponding biomechanical rationale for O&P intervention are the primary method. Skills pertaining to goniometric observations and linear and angular kinematic and kinetic calculations are also introduced. Biomechanics Fundamentals is part one of a two-part course.

Materials Science and Selection in O&P**OPMSS 62102****Credit hrs: 2****Course Director: Michael van Wie, PhD****Course Description:**

- Materials Science and Selection for O&P begins with an introduction to the characterization and classification of materials in general. It then explores the materials specifically used in the construction of orthotic and prosthetic devices, both custom and pre-fabricated, and strategies of selecting from among them for specific clinical uses. Classifications and properties of metals, plastics, foams, leather, and other materials are introduced and linked to direct applications in devices and components in O&P. Choices for material properties are compared and contrasted. Numerous clinical and technical applications are exemplified throughout the course.

Foundations of O&P**OPFOP 62101****Credit hrs: 2****Course Director: Joshua B. Utay, MEd, CPO****Course Description:**

- The Foundations of Orthotics and Prosthetics class is designed to provide an introduction to major themes covered during the didactic year of the program. Certain content from pre-requisite courses such as anatomical terms, essential kinesiology concepts, normal human gait, and commonly-applied statistical measures are reviewed to provide the framework for success in the didactic year. Scopes of Practice defined by the American Board for Certification in O&P (ABC), and educational and clinical program accreditation standards of the National Commission of Orthotics and Prosthetics Education (NCOPE) are explained and contextualized. Students learn lab safety, common materials selection, and other topics essential to the learning and practice of O&P. Students are introduced to concepts that recur throughout the curriculum such as an appreciation for evidence-based clinical practices, the role of research in modern practice, psychosocial factors affecting care, and cultural awareness.

Physical Examination I**OPPEA 62101****Credit hrs: 2****Course Director: Joshua B. Utay, MEd, CPO****Course Description:**

- Physical Examination I (PE I) explores full scope of a physical bodily exam in the context of the evaluation for and provision of clinical O&P services. Physical Examination I has emphasis on manually determining the range of motion (ROM) and muscle strength (MMT) of major joints in the body with respect to typical presentation and common pathological conditions, inclusive of musculoskeletal, neurological, congenital, and developmental

conditions. PE I Focuses primarily on the spine and upper limb. This course content is functionally continued in PE II where the lower limb is the focus.

Spinal & Cranial Orthotic Management

OPSCO 66101

Credit hrs: 6

Course Director: Joshua B. Utay, MEd, CPO

Course Description:

- Spinal & Cranial Orthotic Management covers a comprehensive range of orthotic management of the head and all spinal levels. Examples of devices include orthoses for the cervical, thoracic, lumbar, and sacral levels, alone and in combinations, cranial molding helmets, and face masks. Bony and muscle anatomy, surface anatomy, muscle physiology, kinesiology, and biometrics relative to the spine and head are covered in depth. Pathologies and conditions commonly treated with spinal orthoses are explored, historical orthotic approaches are reviewed, and modern treatment philosophies are covered in depth. Students learn about, observe, and then perform essential aspects of spinal and cranial orthotic care including patient assessment and communication, device design recommendation, measurement and casting, component and material selection, positive model optimization, device fabrication, device application and fitting principles, patient device training, device maintenance, and patient follow up. Importance of proper patient compliance is highlighted.

Upper Limb Orthotic Management

OPULO 64101

Credit hrs: 4

Course Director: Ashley H. Mullen, MSAT, CPO

Course Description:

- Upper Limb Orthotic Management covers a comprehensive range of orthotic management of all aspects of the upper limb. Examples of devices include orthoses for the shoulder, elbow, forearm, wrist, hand, thumb, and fingers. Bony and muscular anatomy, surface anatomy, muscle physiology, kinesiology, and biometrics relative to the upper limb are reviewed, and conditions commonly treated with upper limb orthoses are explored alongside their corresponding historical and contemporary approaches to orthotic intervention. Students learn about, observe, and then perform essential aspects of upper limb orthotic care including: patient assessment and communication, device design recommendation, measurement and casting, component and material selection, positive model optimization, device fabrication, device application and fitting principles, patient device training, device maintenance, and patient follow up.

Upper Limb Prosthetic Management

OPULP 69101

Credit hrs: 9

Course Director: Fanny D. Schultea, MEd, MS, CP

Course Description:

- Upper Limb Prosthetic Management covers a comprehensive range of prosthetic management of all amputation levels of the upper limb. Bony and muscular anatomy, surface anatomy, surgical amputation techniques, muscle physiology, kinesiology, and biometrics relative to the upper limb are covered in depth. Conditions resulting in upper limb amputation are explored, historical prosthetic devices and approaches are reviewed, and modern prosthetic philosophies and components are covered in depth. Students learn about, observe, and then perform essential aspects of upper limb prosthetic care including patient assessment and communication, device design recommendation, terminal device categorization and selection, measurement and casting, component and material

selection, positive model optimization, device fabrication, prosthetic alignment and transfer, device application and fitting principles, patient device training, device maintenance, and patient follow up.

Principles of Professional Practice

OPPPP 62101

Credit hrs: 2

Course Director: Jared A. Howell, MS, CPO

Course Description:

- This course conveys and applies modern administrative and documentation principles related to the provision of comprehensive prosthetic and orthotic care. It introduces students to professional issues related to contemporary clinical practice and exposes them to proper terminology for use in the medical and healthcare field. Practice and business management topics and resources are also addressed in this course complete with input from regional practice / thought leaders.

Clinical Skills Development I

OPCDA 73101

Credit hrs: 3

Course Director: Jared A. Howell, MS, CPO

Course Description:

- This course is designed to provide directed, pre-clinical training to students during the didactic year in order to ensure proper achievement of baseline clinical competencies prior to entering the clinical phase of their training. The course is a practical assessment course which includes a series of sequenced, graded clinical interactions designed to develop clinical skills related to: patient interaction and bed side manner, proper physical assessment, interviewing skills, formulation of a treatment plan, proper follow-up, ethical care, and adherence to sound social and business practices. Although graded assessments occur throughout the coursework, this course culminates in an Objective Skill Clinical Examination, or OSCE. The OSCE is a high-stakes exam that assess each of the basic competencies through a series of simulated clinical experiences. OSCE exams are video-recorded through simulation laboratories allowing students the opportunity to view their own interactions and learn from the experiences.

Health Research Methods

Credit hrs: 2

Course Director: T. David Johnson, PhD

AHHRM 62441

Course Description:

- This course introduces the participant to research methods used in clinical and community-based research, evidence-based practices used to evaluate potential treatment alternatives, and critical evaluation of current published literature. The course uses lectures, practice exercises and online activities to involve the learner in research proposal development and the interpretation of research performed by others. Assignments assist in learner application and reinforcement of information presented during lecture and the text and articulate knowledge gained promoting constructive criticism and critical reflection.

Medical Ethics

OPETH 62421

Credit hrs: 2

Course Director: Jennifer Blumenthal-Barby

Course Description:

- Medical Ethics course focuses the development of ethical principles and standards in the practice of medicine and other types of healthcare delivery. It has emphasis in case-based scenarios and discussion groups to effectively teach and model ethical principles. This course has three components: (1) lectures, (2) small group sessions, and (3) clinical ethics rounds, and it combines students from multiple disciplines to ensure the fullest breadth and depth of clinical care is covered.

O&P Research I

OPORA 61201

Credit hrs: 1

Course Director: Ashley H. Mullen, MSAT, CPO

Course Description:

- O&P Research I (OPR I) contains detailed explanations of the requirements and expectations for the master's-level research project and related milestones and deliverables. Students begin working with their faculty and research mentors on identifying areas of interest, determining the state of the science in the chosen area(s), and what new areas of research may advance understanding of orthotic and/or prosthetic care. By the end of the course, students declare a topic for their research project and submit a plan to match available resources with research objectives by required deadlines. This effort includes both a brief presentation of the project's scope and hopes and a manuscript containing: a statement of the research question, the initial literature search strategy, research hypothesis(-es), and anticipated timeline of the completed works.

Advanced Biomechanics and Clinical Outcomes

OPABM 63201

Credit hrs: 3

Course Director: Jared A. Howell, MS, CPO

Course Description:

- Advanced Biomechanics and Clinical Outcomes continues the study and practice of evaluating and quantifying human movement through simple and complex means begun in Biomechanics Fundamentals. Established, "low-tech," clinically-relevant measures and clinical outcomes instruments that individual practitioners may perform on a regular basis with minimum initial investment begin this course. Both quantitative and qualitative varieties are explored, including surveys. Students also gain experience evaluating novel instruments not yet validated for use in O&P. Biomechanical principles and clinical O&P concepts are applied to gait / movement studies of moderate- to high-tech approaches, up to and including fully-equipped motion-analysis laboratory. Application of fundamental biomechanical principles to clinical practice is accomplished through presentation of clinical scenarios and corresponding biomechanical rationales for orthotic and/or prosthetic intervention.

Physical Examination II

OPPEB 63202

Credit hrs: 3

Course Director: Joshua B. Utay, MEd, CPO

Course Description:

- Physical Examination II (PE II) continues the study of a physical bodily exam in the context of the evaluation for and provision of clinical O&P services. Physical Examination II has emphasis on manually determining the range of motion (ROM) and muscle strength (MMT) of major joints in the body with respect to typical presentation and common pathological conditions, inclusive of musculoskeletal, neurological, congenital, and developmental conditions. PE II focuses primarily on the lower limb. This course content is functional continuation of in PE I where the spine and upper limb comprised the focus.

Pedorthic Management

OPPED 63103

Credit hrs: 3

Course Director: Ashley H. Mullen, MSAT, CPO

Course Description:

- Pedorthic Management covers orthotic management of the foot and ankle. Devices covered are those distal to the malleoli. Examples of devices include therapeutic shoes, accommodative foot orthoses, functional foot orthoses, and subtalar control foot orthoses (UCBL FO's). The course provides an overview of custom footwear, as well as shoe modifications. Bony, muscular, and neurological anatomy is reviewed, along with pathological conditions of the foot and ankle. Foot and lower limb pathologies, kinesiology, gait analysis, and orthotic treatment are explored in depth. Students learn about, observe, and then perform essential aspects of pedorthic management, including patient evaluation and initial assessment, impression taking, device design, positive model modification, material selection, device fitting, device modification, and patient outcome assessment.

Lower Limb Orthotic Management I

OPFAO 65201

Credit hrs: 5

Course Director: Joshua B. Utay, MEd, CPO

Course Description:

- Lower Limb Orthotic Management I (LLO I) incorporates and applies Pedorthic Management to orthotic management of all aspects of the lower limb below the knee. Devices explored in depth include the large number of variants of ankle-foot orthoses (AFO's) used regularly in modern lower-limb, orthotic practice. Bony and muscular anatomy, surface anatomy, muscle physiology, kinesiology, weight-bearing strategies, and biometrics relative to the foot and ankle and gait are covered in depth. Conditions commonly treated with footwear and orthoses of the feet and/or ankles are explored, historical orthotic approaches are reviewed, and modern treatment philosophies are covered in depth. Students learn about, observe, and then perform essential aspects of foot and ankle orthotic care including patient assessment and communication, device design recommendation, measurement and casting, component and material selection, positive model optimization, device fabrication, device application and fitting principles, gait deviation detection and diagnosis, patient device training including shoe wear, device maintenance, and patient follow up.

Lower Limb Orthotic Management II

OPLLO 66201

Credit hrs: 6

Course Director: Ashley H. Mullen, MSAT, CPO

Course Description:

- Lower Limb Orthotic Management II (LLO II) covers the comprehensive range of orthotic management of all aspects of the lower limb involving the knee joint and points proximal. This course integrates principles of bracing the lower limb below the knee (LLO I) as indicated. Bony and muscular anatomy, surface anatomy, muscle physiology, kinesiology, weight-bearing strategies, and biometrics relative to the knee and hip and gait are covered in depth. Pathologies and conditions commonly treated with orthoses of the hip and knee are explored, historical orthotic approaches are reviewed, and modern treatment philosophies are covered in depth. Students learn about, observe, and then perform essential aspects of lower limb orthotic care including patient assessment and communication, device design recommendation, measurement and casting, component and material selection, positive model optimization, device fabrication, device application and fitting principles, gait deviation detection and diagnosis, patient device training including shoe wear, device maintenance, and patient follow up.

Lower Limb Prosthetic Management I

OPLLA 68201

Credit hrs: 8

Course Director: Jared A. Howell, MS, CPO

Course Description:

- Lower Limb Prosthetic Management I (LLP I) covers a comprehensive range of prosthetic management of amputation levels of the lower limb through the tibia and points distal. Bony and muscular anatomy, surface anatomy, muscle physiology, kinesiology, and biometrics relative to the lower limb are covered in depth. Conditions resulting in lower limb amputation are explored, historical prosthetic approaches to transtibial prosthetics practice are reviewed, and modern transtibial prosthetic devices, components, and philosophies are covered in depth. Students learn about, observe, and then perform essential aspects of transtibial prosthetic care (and points distal) including patient assessment and communication, K-Level evaluation and designation, device design recommendation, measurement and casting, component and material selection, positive model optimization, device fabrication, prosthetic alignment and transfer, device application and fitting principles, gait deviation detection, patient device training, gait considerations, device maintenance, volume management, and patient follow up. LLP I also covers prosthetic feet of all kinds, partial foot management, and bilateral amputee management.

Contemporary Practice and Synthesis

OPCPS 62201

Credit hrs: 2

Course Director: Jared A. Howell, MS, CPO

Course Description:

- This course is designed to introduce students to advanced concepts in prosthetics and orthotics and to provide a forum for discussing emerging technologies and the latest applicable research. While this course has some advanced concepts that are covered on a regular basis, much of the content is established as trends and technologies change.

Lower Limb Prosthetic Management II

OPLLB 65202

Credit hrs: 5

Course Director: Jared A. Howell, MS, CPO

Course Description:

- Lower Limb Prosthetic Management II (LLP II) covers the comprehensive range of prosthetic management of amputation levels of the lower limb at the knee and points proximal. Bony and muscular anatomy, surface anatomy, surgical amputation techniques, muscle physiology, kinesiology, and biometrics relative to the lower limb are reviewed as applicable. Pathologies and conditions resulting in lower limb amputation are reviewed, historical approaches to transfemoral prosthetics practices are reviewed, and modern transfemoral prosthetic philosophies, components, and methods are covered in depth. Students learn about, observe, and then perform essential aspects of knee-disarticulation and proximal lower limb prosthetic care including patient assessment and communication, K-Level designation, device design recommendation, measurement and casting, component and material selection, positive model optimization, device fabrication, prosthetic alignment and transfer, device application and fitting principles, gait deviation detection, patient device training, gait considerations, device maintenance, volume management, and patient follow up. LLP II also covers knee and hip units, including microprocessor controlled devices and bilateral / multiple amputee management.

Advanced Topics in Orthotics and Prosthetics

OPADT 62201

Credit hrs: 2

Course Director: Jared A. Howell, MS, CPO

Course Description:

- This course is designed to introduce students to advanced concepts in the practice of prosthetics and orthotics and to provide a forum for discussing emerging technologies and the latest applicable research. While this course has some advanced concepts that are covered on a regular basis, much of the content is established as trends and technologies change. Curriculum covers advanced topics that supplement and build on content gained in core basic science coursework. This course draws on strengths from clinical faculty, and outside guest lecturers.

O&P Research II

OPORB 72102

Credit hrs: 2

Course Director: Ashley H. Mullen, MSAT, CPO

Course Description:

- O&P Research II (OPR II) continues the efforts from OPR I on developing and executing the research project. Students are expected to work with their research advisor(s) to independently organize research planning, data collection, data analysis, and manuscript preparations. The class is assembled at the mid-point of the semester for progress checks and group discussions about research topics and projects. Critiques by fellow students and instructors / mentors are performed resulting in direct feedback for each project. Students gather again at the end of the semester to submit the required deliverables of the project and discuss project progress with advisors and current and adjacent class cohorts.

Technical Skills Development Core

OPTSD 71101

Credit hrs: 1

Course Director: Jared A. Howell, MS, CPO

Course Description:

- This required core rotation is design to give students a grasp on the technical aspects of clinical care. Students in this rotation shall develop best practices for the laboratory, including laboratory safety, and proper fabrication techniques to ensure patient safety. Efforts should be also made to understand material and component costs, effective and efficient shipping / stocking procedures, and any potential environmental impact. In this rotation, students further develop their technical abilities by spending the bulk of their day in the laboratory. Students are encouraged to work closely with a lab mentor who provides hands-on technical training. Students are also encouraged to work through several patient interactions from start to finish through fabrication and fitting of the device. This rotation includes equal exposure to prosthetic and orthotic concepts, and modification of prosthetic and orthotic positive models. To the extent possible, alternative fabrication models and processes may be explored. These may include CAD/CAM, carving, 3-D printing, and/or other mechanized techniques.

Pediatric Core

OPPED 76101

Credit hrs: 6

Course Director: Jared A. Howell, MS, CPO

Course Description:

- This required core rotation is meant to provide comprehensive clinical experience in the field of pediatrics. Patient interactions in this rotation may include prosthetics and/or orthotics. Pre-graduate residents work closely

with pediatric orthotists and/or prosthetists to develop the necessary techniques and skills for pediatric care. This includes pediatric-specific pathologies, proper patient / parent communications, and therapist involvement. Pre-graduate residents learn appropriate precautions inherent in pediatric care and emulate protocols related to safety and comfort of pediatric patients. Students are exposed to a variety of clinical pathologies and challenges not often seen in the general adult population.

Institutional and Acute Core

OPINT 76101

Credit hrs: 6

Course Director: Jared A. Howell, MS, CPO

Course Description:

- This required core rotation is meant to provide comprehensive clinical experience with an emphasis on acute conditions and inpatient care. Patient interactions in this rotation may include prosthetics and/or orthotics. Pre-graduate residents work closely with institution-based orthotists and/or prosthetists to develop the necessary techniques and skills for inpatient and outpatient clinical care. Pre-graduate residents in this rotation shall develop skills of assessing and diagnosing advanced pathologies related to their target population. Emphasis in this core is placed on open communication and participation with the broader healthcare team. Pre-graduate residents develop apply appropriate safety precautions and understand protocols related to patient contact and infection control.

O&P Research III

OPORC 72203

Credit hrs: 2

Course Director: Ashley H. Mullen, MSAT, CPO

Course Description:

- O&P Research III continues efforts from OPR II on the individual research projects. Midway through, students present progress on their projects and preliminary results to classmates and mentors. Critiques and suggestions are offered on statistical analyses and results sections by students and faculty. Students individually gather remaining data, compute results, and construct remaining sections with mentors. Students gather one more time at the end of the semester to submit the required elements of the project and for class presentation of project progress to current and adjacent class cohorts.

Prosthetics Core

OPPCP 76201

Credit hrs: 6

Course Director: Jared A. Howell, MS, CPO

Course Description:

- This required core rotation is meant to provide comprehensive clinical experience with an emphasis on prosthetic patient management. Patient interactions in this rotation are dedicated to prosthetics. Pre-graduate residents work closely with community based prosthetists to develop the necessary techniques and skills for comprehensive prosthetic care. Pre-graduate residents in this rotation shall develop assessment and evaluation skills necessary to formulate appropriate prosthetic interventions. Pre-graduate residents undergo the process from prescription to training and practice implementing the appropriate steps in that process. Proper handling of follow-up, maintenance and repairs is covered in detail. Pre-graduate residents are encouraged to openly communicate and participate with the healthcare team. Pre-graduate residents learn appropriate safety precautions and understand protocols related to patient contact, laboratory work, and infection control. Pre-graduate residents are required to complete appropriate documentation for all qualifying experiences.

Orthotics Core

OPOCO 76201

Credit hrs: 6

Course Director: Jared A. Howell, MS, CPO

Course Description:

- This required core rotation is meant to provide comprehensive clinical experience with an emphasis on orthotic patient management. Patient interactions in this rotation are dedicated to orthotics. Pre-graduate residents work closely with community based orthotists to develop the necessary techniques and skills for comprehensive orthotic care. Pre-graduate residents in this rotation shall develop assessment and evaluation skills necessary recognize advanced pathologies and formulate appropriate orthotic interventions. Pre-graduate residents undergo the process from prescription to training and practice implementing the appropriate steps in that process. Proper handling of follow-up, maintenance and repairs is covered in detail. Pre-graduate residents are encouraged to openly communicate and participate with the healthcare team. Pre-graduate residents learn appropriate safety precautions and understand protocols related to patient contact, laboratory work, and infection control. Pre-graduate residents are required to complete appropriate documentation for all qualifying experiences.

O&P Research IV

OPORD 72101

Credit hrs: 2

Course Director: Ashley H. Mullen, MAST, CPO

Course Description:

- O&P Research IV contains the last milestones of the research project, including creation, polishing, and presenting posters and written manuscripts. This class then meets periodically when students present their work to each other and faculty for critique. Upon approval by their Research Advisor, students prepare posters of their projects to display at the annual Allied Health Research Day in November attended by numerous members of multiple health care professions from around the region. Final master's papers are due by the end of the semester.

Clinical Specialization I & II

I – OPCSA 76101

II – OPCSB 76102

Credit hrs: 6 (for each course)

Course Director: Jared A. Howell, MS, CPO

Course Description:

- These required specialization rotations are meant to provide comprehensive clinical experience with an emphasis on comprehensive clinical treatment. Patient interactions in this rotation include general prosthetic and orthotic practice, but students are encouraged to take advantage of opportunities for advanced and/or specialized patient care. During this rotation, students shall be working more independently and having more responsibility for patient care. Supervision and oversight is still necessary, but students shall be challenged and given opportunities that stretch their abilities and give them skills beyond those developed during the core rotations. Pre-graduate residents learn appropriate safety precautions and understand protocols related to patient contact and infection control. Although not required, students are encouraged to seek out international or local humanitarian opportunities as they present. Humanitarian experiences should be limited to no more than four weeks total without express written permission of residency supervisors, residency mentors, and the program director. Clinical Specialization I and II are designed to be contiguous in nature, although permission can be granted by the supervising faculty member to allow separate specializations during this period. The six-month specialization period can be completed anywhere in the country (or potentially out of the country with program approval),

provided each prospective site and residency mentors go through the necessary screening, approval, and training processes.

Anatomical Science I (AHANA-65101)

This course is designed to provide the student an extensive background in the fundamentals of human anatomy through lecture, small group laboratory, and independent study formats. Embryology coupled with structures of the upper and lower extremities, cardiovascular and pulmonary systems, abdomen and pelvis, and reproductive organs are described and illustrated in lecture followed by laboratory experiential learning that emphasizes the location, identification, function, and relationships of pertinent structures using cadavers, prosections, radiograph images, and static models. The course is intended to provide an anatomical basis for understanding the physical examination and structural changes associated with illness and injury of each major organ and body system.

Credit: 5 semester hours

Course Director: [David Rowley](#)

Anatomical Science II (AHANA-62102)

This course is designed to provide the student an extensive background in the fundamentals of human anatomy utilizing lecture, small group laboratory, and independent study formats. Anatomic structures of the head and neck are described and illustrated in lecture followed by laboratory experiential learning to include location and identification as well as function and relationships of structures using cadavers, prosections, radiograph images, and static models. The course is intended to provide an anatomical basis for understanding the physical examination and structural changes associated with illness and injury of each major organ and body system.

Credit: 2 semester hours

Course Director: [David Rowley](#)

Behavioral Dynamics (PABDN-64431)

This lecture and discussion course designed to provide the student with an overall view of the normal and abnormal characteristics of human psychological development and behavior. The etiology and consequences of common congenital and environmental influences are studied in relation to the pediatric, adult, and geriatric patient.

Credit: 4 semester hours

Course Directors: [Bengi Melton](#) and [Vicki Waters](#)

Course Offered: Spring 1, Terms 2, 3

Clinical Biochemistry (AHBIO-63121)

This course is designed to provide the student with the basics of clinical biochemistry in order to prepare them for their further studies. The course will review basic organic chemistry pertinent to understanding metabolic pathways with emphasis on different aspects of clinical biochemistry including structure and function of proteins, enzyme kinetics, and the metabolism of carbohydrates, lipids and amino acids. Special attention will be given to the nutritional needs of humans.

Credit: 3 semester hours

Course Director: [Kristina Hulten](#)

Clinical Genetics (AHGEN-61141)

This course teaches allied health graduate students the basics of clinical genetics in order to prepare them for their further studies and practice in primary care. The course will review basic genetic information (the structure of DNA, RNA and protein synthesis) and clinical genetics (human development, gene analysis, disease producing mutations).

Credit: 1 semester hour

Course Director: [Brett Graham](#)

Course Offered: Fall 1, Term 3

Clinical Medicine 1 (PACMD-61501)

The PIM module introduces the basic principles cell injury, adaptation and death, acute and chronic inflammation, cell regeneration and fibrosis, hemostasis, thrombosis and shock, immune-mediated injury, benign and malignant neoplasms, atherosclerosis along with an introduction to the mechanisms underlying viral, bacterial, and fungal pathogens to include innate host defense mechanisms prior to studying organ system pathophysiology.

Credit: 1 semester hour

Course Directors: [Brian Reed](#) and [Katherine Erdman](#)

Course Offered: Fall 1, Term 1

Clinical Medicine 2 (PACMD-61502)

The CVS module introduces the pathophysiology, clinical manifestations differential diagnosis, and treatments of acute and chronic disease involving the cardiovascular system. Critical Thinking Sessions are used to integrate and apply the acquired from lectures and readings.

Credit: 1 semester hour

Course Directors: [Brian Reed](#) and [Katherine Erdman](#)

Clinical Medicine 3 (PACMD-63503)

The PRI module introduces the pathophysiology, clinical manifestations, differential diagnosis, and treatments of acute and chronic disorders involving the pulmonary, renal and integument systems. Critical Thinking Sessions are used to integrate and apply the acquired from lectures and readings.

Credit: 3 semester hours

Course Directors: [Brian Reed](#) and [Katherine Erdman](#)

Clinical Medicine 4 (PACMD-62511)

The GGMR module introduces the pathophysiology, clinical manifestations, differential diagnosis, and treatments of acute, chronic and obstructive disorders involving the gastrointestinal, genitourinary, musculoskeletal, and rheumatologic systems. Critical Thinking Sessions are used to integrate and apply the acquired from lectures and readings.

Credit: 2 semester hours

Course Directors: [Brian Reed](#) and [Katherine Erdman](#)

Clinical Medicine 5 (PACMD-62512)

The EON module introduces the pathophysiology, clinical manifestations, differential diagnosis, and treatments for acute and chronic disorders involving the ears, eyes, and central and peripheral nervous systems. Critical Thinking Sessions are used to integrate and apply the acquired from lectures and readings.

Credit: 2 semester hours

Course Directors: [Brian Reed](#) and [Katherine Erdman](#)

Clinical Medicine 6 (PACMD-62513)

The EGHOUID module introduces the pathophysiology, clinical manifestations, differential diagnosis and treatments for urgent, acute and chronic disorders involving the endocrine and hematologic systems coupled with disorders effecting older adults and the management of HIV infection. Critical Thinking Sessions are used to integrate and apply the acquired from lectures and readings.

Credit: 2 semester hours

Course Directors: [Brian Reed](#) and [Katherine Erdman](#)

Clinical Prevention (PACLP-62301)

This course introduces students to the history, underlying theory, and basic concepts associated with clinical prevention in the United States, espoused by the United States Preventive Services Task Force (USPSTF). Recommended guidelines and strategies for early disease screening, risk identification, and risk stratification are addressed using a population-specific frame of reference designed to complement parallel learning experiences in Clinical Medicine, Physical Diagnosis, Genetics, and Health Behavioral Counseling. Concepts will be cumulatively implemented throughout the Physical Diagnosis course through patient write-ups and through this course utilizing case integrations.

Credit: 2 semester hours

Course Directors: [Brian Reed](#) and [Carl Fasser](#)

Course Offered: Fall 1, Terms 1, 2

Cultural Competency I (PACC-62401)

The course introduces students to issues surrounding cultural awareness and sensitivity pertaining to the diversity and uniqueness of populations to be encountered as health care practitioners using lectures, panel discussions, small group activities, and participation in community events. Over the course of a year, the course will explore personal bias, communication styles, belief systems, alternative health care practices, family roles, and the relationship of these issues to perceptions of culture and socioeconomic status.

Credit: 2 semester hours

Course Directors: [Brian Reed](#) and [Carl Fasser](#)

Course Offered: Fall 1, Terms 1, 2

Diagnostic Testing (PADIA-62701)

A course designed to acquaint students with the principles involved in and the clinical evaluation of radiographic and clinical laboratory diagnostic studies. The emphasis within the radiology section is placed on normal radiographic findings and their comparison to the abnormalities visualized in disease processes. In the laboratory medicine section, the lectures are designed to survey and relate the results of tests to clinical

situations. Lectures will also introduce the techniques of more important laboratory tests to include specimen acquisition and handling.

Credit: 2 semester hours

Course Directors: [Antone Opekun](#)

Course Offered: Spring 1, Term 2

Electrocardiography (PAECG-62711)

This course designed to present a systematic approach to ECG interpretation in preparation for didactic training in cardiology. The objective of the course is to teach the student to evaluate ECG tracings using the specific steps and each lecture covers a specific topic or topics and builds on the previous ones. After completing each lecture, the student will be given ECG tracings to review and apply the knowledge acquired in laboratory conferences.

Credit: 2 semester hours

Course Director: [Antone Opekun](#)

Course Offered: Spring 1, Term 3

Health Behavioral Counseling (AHHBC-62201)

This course introduces counseling and behavioral science theories, skills, and tools to enhance learners' communication skills and understanding of the process of health behavior change. Behavior change stages and processes are introduced using the Transtheoretical Model and social learning theories, with a focus on applying Motivational Interviewing skills. Learning activities include role play, observation of self-help support group sessions, simulated patient encounters, and critical reflection, to help learners develop an intimate understanding of the process of change and increase empathy for patients attempting to change health behaviors.

Credit: 2 semester hours

Course Director: [Robert McLaughlin](#) & Beth Garland

Course Offered: Fall 1, Terms 1, 2, 3

Health Research Methods (AHHRM-62441)

This course will introduce the student to analytical methods used in clinical and community-based research, evidence-based practices used to evaluate potential treatment alternatives, and strategies underlying critical evaluation of current published literature. Lectures, practice exercises, and on-line activities will be used to involve the learner in the research process, proposal development, and the interpretation of research performed by others. Assignments are used to assist with the application and reinforcement of information presented during lecture and to promote constructive criticism and critical reflection.

Credit: 2 semester hours

Course Director: [David Johnson](#)

Course Offered: Spring 1, Term 2

Human Physiology I (AHPHY-64221)

This course is designed to provide the student an extensive understanding of human physiology from the cellular to the organ and body systems level with a focus on the mechanisms of normal organ function and the consequences of malfunction of the nervous, cardiovascular, respiratory, renal and digestive systems along with temperature regulation. Clinical examples that illustrate the consequences of malfunction are used to emphasize, by comparison, normal physiology.

Credit: 4 semester hours

Course Director: [David Johnson](#)

Human Physiology II (AHPHY-62222)

This course is designed to provide an extensive understanding of human physiology from the cellular to the organ and body systems level with a major emphasis on the mechanisms of normal organ function and the consequences of malfunction of the endocrine and reproductive systems along with energy and metabolism, bone, and the physiology of normal pregnancy. Clinical examples that illustrate the consequences of malfunction are used to emphasize, by comparison, normal physiology

Credit: 2 semester hours

Course Director: [David Johnson](#)

Immunology for Allied Health (AHIMM-62131)

This course will provide an overview of basic immunological concepts including components of the immune system, innate and adaptive immune responses. The immune responses against infectious microbes as well as immunologic diseases will also be addressed.

Credit: 2 semester hours

Course Director: [Donovan Earley](#)

Medical Ethics (AHETH-62421)

The course introduces students from multiple disciplines to the basic concepts and language of medical ethics, presents relevant topics in medical ethics, and models the skills requisite to the application of medical ethics to clinical cases using small group sessions and clinical ethics rounds. The interdisciplinary nature of the course ensures that the breadth and depth of problems in the clinical arena are addressed.

Credit: 2 semester hours

Course Director: [Jennifer Blumenthal Barby](#)

Course Offered: Spring 1, Term 2

Medicine – Outpatient (PAIMO-74631)

During this core rotation the student will learn to apply basic medical knowledge to the evaluation of problems encountered in an ambulatory clinic. The formulation of an understanding of the various medical disorders in specific patients is accomplished during the accurate collection of data, the identification of problems, and the development of a plan for each problem. The student likewise learns to view the patient in a broader context because of the emphasis given to the emotional and social needs of the individual.

Credit: 4 semester hours

Course Directors: [Brian Reed](#) and Sarah-Ann Keyes

Course Offered: Fall 2 and Spring 2

Pediatrics (PAPED-62531)

This course is designed to provide an overview of general pediatrics using lectures and skills sessions. The course introduces students to common health problems effecting the pediatric patient from the newborn period to adolescence. Each lecture focuses on the important aspects of health promotion, disease prevention,

pathology, screening, patient education, and counseling provided to the pediatric patient and their family. The purpose of the practicum is to expose students to hands-on experience with different ages of pediatric patients. This course begins with health prevention, physical examination of the pediatric patient, and progresses to specific pediatric problems.

Credit: 2 semester hours

Course Director: [Elizabeth Elliott](#)

Course Offered: Spring 1, Term 3

Pharmacology I (PAPRM-63801)

This course promotes an understanding of the general principles of pharmacology and their application of these principles to patient care situations. Students will learn the mechanism of action of drugs in different therapeutic classes and understand how use of these drug interacts with the pathophysiology of the disease under treatment; learn the most common effects and side effects for prototypic drugs in each category; become comfortable with sources of information about drugs, drug side effects and drug interactions; learn the drug of choice for diseases; and know which drugs have potentially fatal side effects.

Credit: 3 semester hours

Course Director: [Ramachandr Reddy](#)

Course Offered: Fall 1, Terms 2, 3

Pharmacology II (PAPRM-62811)

This course continues the study of the mechanisms of action of drugs in different therapeutic classes and their effects on the pathophysiology of disease states under treatment.

Credit: 2 semester hours

Course Director: [Ramachandr Reddy](#)

Course Offered: Spring 1, Term 1

Physical Diagnosis I (PAPHD-66601)

The first semester of this course focuses on developing skills to perform a complete history and physical examination on patients over the spectrum of ages and clinical situations that a physician assistant may encounter in clinical practice. The learning experiences emphasize the principles, skills, routines and special tests appropriate for the assessment of disease involving the cardiovascular and respiratory systems. A secondary aim of this course is the development of skills in formulating an appropriate diagnosis and treatment plan derived from information taken in the history and identified from the physical exam. The course will stress the accurate presentation of information in both written and oral forms.

Credit: 6 semester hours

Course Director: [Stephanie DeSandro](#)

Course Offered: Fall 1, Terms 1, 2, 3

Physical Diagnosis II (PAPHD-66602)

The second semester continues to develop skills in performing a complete and problem-specific history and physical examination on patients over the spectrum of ages and clinical situations. The learning experiences focus upon the principles, skills, routines and special tests appropriate for the assessment of diseases involving the eyes, ears, nose, throat, gastrointestinal, genitourinary, dermatological, musculoskeletal, and nervous systems. This semester will continue the development of an appropriate differential diagnosis and plan for the

further evaluation and management of an identified problem with accurate presentation of information in both written and oral forms.

Credit: 3 semester hours

Course Director: [Stephanie DeSandro](#)

Course Offered: Spring 1, Terms 1, 2, 3

Problem Solving in Medicine I (PAPSM-61901)

This course assist students develop their skills at differential diagnosis and problem identification through the integration of information presented in the Clinical Medicine and Physical Diagnosis courses. Multiple critical thinking sessions using team learning techniques are used to explore problems involving the heart, lungs, abdomen, kidney and lower urinary tract.

Credit: 1 semester hour

Course Director: [Carl Fasser](#)

Course Offered: Fall 1, Term 3

Problem Solving in Medicine II (PAPSM-62911)

This course assist students develop their skills at differential diagnosis and problem identification through the integration of information presented in the Clinical Medicine, Physical Diagnosis and Diagnostic Testing courses. Multiple critical thinking sessions using team learning techniques are used to explore problems involving the musculoskeletal, special sensory, central and peripheral nervous systems, and the hematopoietic system.

Credit: 2 semester hours

Course Director: [Carl Fasser](#)

Course Offered: Spring 1, Terms 1, 2, 3

Professional Role Issues I (PAPRI-62411)

This three-block course provides students a historical perspective of the evolving professional, clinical, and intra-professional roles carried out by physician assistants through a study of the organizational, political, legal and socioeconomic forces that have and continue to shape the profession.

Credit: 2 semester hours

Course Director: Sarah-Ann Keyes

Course Offered: Spring 1, Terms 1, 2, 3

Professional Role Issues II (PAPRI-71511)

This course introduces students to jurisprudence and professional practice issues. Through lectures, seminars, and individual assignments the student will learn about the healthcare marketplace, Texas medical jurisprudence, risk management, and professional practice issues to include employment and credentialing, insurance reimbursement, and medical coding. The course also addresses the alternative roles played by PAs in the community and the therapeutic uses for common drugs.

Credit: 1 semester hour

Course Director: Sarah-Ann Keyes

Course Offered: Fall 2, Spring 2, and Fall 3

Women's Health (PAWHI-62521)

This one-block course focuses on the normal physiological and sexual development of women and their health maintenance concerns at various life stages. The manifestation, evaluation, and treatment of common pertinent disease entities are addressed as is the evaluation and management of the expectant woman. Additionally, the course is designed to assist students in attaining a sensitive approach in providing health maintenance education in addition to breast, gynecological and obstetrical examinations. Students will be able to recognize common gynecological and obstetrical problems and understand the appropriate therapeutic intervention for their management. Problem specific histories, obstetrical and gynecological examinations will be performed.

Credit: 2 semester hours

Course Director: [Wendi Stewart](#)

Course Offered: Spring 1, Term 2

PA Clinical Courses:

Cultural Competency II (PACC-71521)

This course builds on the students' cultural awareness and sensitivity in dealing with patients from different cultures through the exploration of personal bias, communication styles, belief systems, health care practices, family roles, and their impact on the clinical encounter using the skill of crucial reflection.

Credit: 2 semester hours

Course Director: [Carl Fasser](#)

Course Offered: Fall 2, Spring 2, and Fall 3

Emergency Medicine (PAERM-74681)

The core Emergency Medicine rotation provides an in-depth exposure to the illnesses and injuries sustained by children and adults that necessitate emergency care. The educational experiences emphasize the focusing of interview and examination skills and performing of techniques and procedures essential to the proper management of surgical illness and injury.

Credit: 4 semester hours

Course Directors: [Tyson Pillow](#), [Tiffany Patterson](#), and [Stephanie DeSandro](#)

Course Offered: Fall 2, Spring 2, and Fall 3

Internal Medicine – Inpatient (PAIMI-78621)

During this core rotation the student will learn to apply basic medical knowledge to the evaluation of problems encountered on a general medicine service. The formulation of an understanding of the various medical disorders in specific patients is accomplished during the accurate collection of data, the identification of problems, and the development of a plan for each problem. The student likewise learns to view the patient in a broader context because of the emphasis given to the emotional and social needs of the individual.

Credit: 8 semester hours

Course Directors: [Jagadeesh Kalavar](#) and [Alexandria Fornerette](#)

Course Offered: Fall 2 and Spring 2

Internal Medicine – Outpatient (PAIMO-74631)

During this core rotation the student will learn to apply basic medical knowledge to the evaluation of problems encountered in an ambulatory clinic. The formulation of an understanding of the various medical disorders in specific patients is accomplished during the accurate collection of data, the identification of problems, and the development of a plan for each problem. The student likewise learns to view the patient in a broader context because of the emphasis given to the emotional and social needs of the individual.

Credit: 4 semester hours

Course Directors: [Brian Reed](#) and [Katherine Erdman](#)

Course Offered: Fall 2 and Spring 2

Obstetrics and Gynecology (PAGYN-74641)

The core OB/GYN rotation exposes students to the spectrum of problems and issues associated with women's health care primarily in an ambulatory setting. The learning experiences emphasize family planning and birth

control, sexually transmitted disease recognition and treatment, cancer detection, prenatal care, the evaluation of common gynecologic problems, and offer exposures to delivery and the surgical management of GYN disorders.

Credit: 4 semester hours

Course Directors: [Susan Raine](#) and [Elissa Love](#)

Course Offered: Fall 2 and Spring 2

Pediatrics – Inpatient (PAPDI-74751)

During this core rotation the student learns to apply basic medical knowledge and skills to the evaluation of problems encountered on a general pediatric service. The emphasis in this setting is on the provision of secondary and tertiary care to a child from birth through adolescence.

Credit: 4 semester hours

Course Directors: [Graciela Villarreal](#) and [Elizabeth Elliott](#)

Course Offered: Fall 2 and Spring 2

Pediatrics – Outpatient (PAPDO-74761)

During this core rotation the student learns to apply basic medical knowledge and skills to the evaluation of problems encountered in an ambulatory pediatric practice. The emphasis in this setting is on the provision of primary and secondary care to a child from birth through adolescence.

Credit: 4 semester hours

Course Directors: [Brian Reed](#) and [Elizabeth Elliott](#)

Course Offered: Fall 2 and Spring 2

Professional Role Issues II (PAPRI-71511)

This course introduces students to jurisprudence and professional practice issues. Through lectures, seminars, and individual assignments the student will learn about the healthcare marketplace, Texas medical jurisprudence, risk management, and professional practice issues to include employment and credentialing, insurance reimbursement, and medical coding. The course also addresses the alternative roles played by PAs in the community and the therapeutic uses for common drugs.

Credit: 1 semester hour

Course Director: [Carl Fasser](#)

Course Offered: Fall 2, Spring 2, and Fall 3

Psychiatry (PAPSY-74671)

This core rotation is designed to provide an understanding of the behavioral components of health, disease and disability. Exposure to patients with a variety of emotional illnesses and disabilities are used to develop informed history taking and mental status examination skills abilities to recognize and categorize psychiatric disturbances and techniques of early intervention and psychiatric referral.

Credit: 4 semester hours

Course Director: [Ali Abbas Asghar-Ali](#) and [Vicki Waters](#)

Course Offered: Fall 2 and Spring 2

Surgery (PASUR-74691)

This core rotation provides an orientation to patients of various ages with surgically manageable disease. The emphasis of the learning experiences are on the preoperative evaluation and preparation of patients for surgery; assistance during the intra-operative period to develop an understanding of team member roles and operative procedures; and the care of surgical wounds and post-operative complications.

Credit: 4 semester hours

Course Director: [Brad Scott](#) and [Stephanie DeSandro](#)

Course Offered: Fall 2 and Spring 2

Research I (PARS1-74531)

The first research seminar expands upon design issues addressed in the research methods course with particular attention paid to the identification of literature search strategies for each student's Masters Paper Project, selection of works to be included in various sections of the Master's Paper, clarification of questions surrounding data collection and strategies of analysis, and generation of the first draft of the paper and final poster through the methods section. All students are required to make a formal presentation of their research to the seminar group for review and comment.

Credit: 4 semester hours

Course Director: [David Johnson](#)

Course Offered: Spring 2 and Fall 2

Research II (PARS2-74541)

The second research seminar involves continuing review of the drafted paper narrative with particular attention to the results of the data analysis and a discussion of the implications of the findings. Students are required to present the results of their research to the group for review and comment and complete the outline for their subsequent poster presentation during the annual research day.

Credit: 4 semester hours

Course Director: [David Johnson](#)

Course Offered: Fall 2

Master's Paper (PAMPP-74800)

Improving patient care outcomes and promoting patient safety in practice require that PAs be able to engage in critical analysis of their own practice experiences in the context of existing policies and procedures and best evidence. The intent of the longitudinal Master's Paper Project is to prepare entry-level PAs to function in this manner. To complete the Master's Paper, students will use information technology to access and manage critical information, apply knowledge of study designs and statistical methods to appraise clinical information addressing diagnostic and therapeutic effectiveness, and integrate evidence from scientific studies related to the needs of panels of patients, target populations, or the broader community.

Credit: 4 semester hours

Course Directors: [David Johnson](#) and [Carl Fasser](#)

Course Offered: Throughout every month of each academic year.

Family and Community Medicine (PACFM-78731)

This applied integration core rotation provides an exposure to the principles and practices of community-oriented primary care with an emphasis on disease prevention and health maintenance in adults as well as the opportunity to further techniques in history taking, physical examination, and health behavior counseling. Students also gain insight to the socio-environmental factors effecting the provision of healthcare services.

Credit: 8 semester hours

Course Directors: [Brian Reed](#) and [Carl Fasser](#)

Course Offered: Spring 2 and Fall 2

Geriatrics (PAGER-74721)

This advanced clinical core rotation provides an opportunity to apply knowledge of the physiological, behavioral, psychological and sociological changes associated with aging to the multidimensional assessment of elderly individuals. The student acts as a member of an interdisciplinary team of health professionals managing disorders common to older individuals with particular attention to the maintenance of autonomy across alternative care settings.

Credit: 4 semester hours

Course Directors: [George Taffet](#) and [Lurie McAdow](#)

Course Offered: Spring 2 and Fall 3

Physical Medicine and Rehabilitation (PAPMR-74781)

This clinical core rotation emphasizes medical rehabilitation in the adult population to enhance maintenance of independence in daily personal care and ambulatory household and community activities. It is designed to enable the student to develop skills in the examination of the spine and extremities; develop knowledge of basic kinesiology and biomechanics; and to begin to understand techniques of dynamic assessment. The student will perform comprehensive exams of the neurologic, muscular and skeletal system in young, mature and older adults while learning about the unique aspects of medical care of persons with major trauma, traumatic brain injury, amputation, and spinal cord injury.

Credit: 4 semester hours

Course Directors: [Martin Grabois](#) and [Vicki Waters](#)

Course Offered: Spring 2 and Fall 2

SCHOOL OF ALLIED HEALTH SCIENCES



Degree Requirements Academic Year 2016-2017

This document includes all degree requirements for programs in the School of Allied Health Sciences. A table of contents is included below.

- Doctor of Nursing Practice Program-Nurse Anesthesia.....Page 2
- Orthotics and Prosthetics Program..... Page 6
- Physician Assistant Program Page 8

Doctor of Nursing Practice (Nurse Anesthesia)

DNP Curriculum Overview		Semester	BSN-DNP Sem Hrs.	MS-DNP Sem. Hrs.		Course Type Abbreviations				
		Spring 1	30	9		Abbrev.	Interpretation			
		Fall 1	26	11		DONLN	Didactic Online			
		Spring 2	28	12		DLECT	Didactic Lecture			
		Fall 2	13	9		DLELA	Didactic Lecture & Lab			
		Spring 3	18	0		DLEOL	Didactic Lecture & Online			
		Fall 3	17	0		DHPGR	Didactic High Performance Groups			
		Total Semester Hours for DNP Degree		132		41	DRESR	Didactic Research		
								DEXAM	Didactic Examination	
						CPRAC	Clinical Practicum			
Semester	Course Begins	Course <small>*Denotes Advanced Nursing Practice Core</small>	Dept	Number	Type	BSN-DNP Sem. Hours	MS-DNP Sem. Hours	Passing Grade	Course Director	
Spring 1	2016 Nurse Anesthesia Spring 1									
	Term 1	Advanced Health Assessment	NAAHA	63401	DLELA	3		B	M. Bullerwell, CRNA, DNP	
		*Professional Philosophy and Scholarship	NAPAS	83102	DONLN	3	3	B	A. Langley, CRNA, DNP	
		*Ethical and Multicultural Healthcare	NAEMH	83106	DLECT	3		B	D. Earley, CRNA, DNP	
		*Leading & Managing Healthcare Systems	NLMHS	83105	DONLN	3		B	J. Walker, CRNA, DNP, FAAN	
	Term 2	*Theories and Concepts in Healthcare	NPTHC	83101	DONLN	3	3	B	J. Walker, CRNA, DNP, FAAN	
		*Decision Science & Informatics in Healthcare	NHIDS	83109	DONLN	3		B	L. Harrington, RN, PhD, DNP	
		*Influencing Healthcare Policy	NAIHP	83104	DONLN	3		B	J. Walker, CRNA, DNP, FAAN	
	Term 3	*Biostatistics	NBIOS	83110	DONLN	3	3	B	L. Harrington, RN, PhD, DNP	
		*Quality Outcomes Management	NAQOM	83108	DONLN	3		B	L. Harrington, RN, PhD, DNP	
*Approaches to Healthcare Education		NAAHE	83107	DONLN	3		B	D. Earley, CRNA, DNP		
Spring 1 Semester total					30	9				
Fall 1	2016 Nurse Anesthesia Fall 1									
	Term 1	*Emerging Sciences in Healthcare	NEMER	82111	DONLN	2		B	L. Harrington, RN, PhD, DNP	
		*Leading & Managing Healthcare Systems	NLMHS	83105	DONLN		3	B	J. Walker, CRNA, DNP, FAAN	
		Anatomical Science 1	AHANA	65101	DLELA	5		B	D. Rowley, PhD	
		Clinical Biochemistry	AHBIO	63121	DLECT	3		B	K. Hulten, PhD	
		Physics for Anesthesia Practice	NAPAP	61602	DLECT	1		B	R. Davis, CRNA, DNP	
	Term 2	Advanced Pathophysiology 1	NPATH	62105	DLECT	2		B	R. Davis, CRNA, DNP	
		Principles of Anesthesia	NANPA	64801	DLECT	4		B	D. Earley, CRNA, DNP	
		Pharmacology in Advanced Practice 1	NANAP	63901	DLECT	3		B	R. Davis, CRNA, DNP	
		Human Physiology 1	AHPHY	64221	DLECT	4		B	T. D. Johnson, PhD	
		Immunology for Allied Health	AHIMM	62131	DLECT	2		B	D. Earley, CRNA, DNP	
		*Decision Science & Informatics in Healthcare	NHIDS	83109	DONLN		3	B	L. Harrington, RN, PhD, DNP	
	Term 3	*Translational Research	NATRR	83112	DONLN		3	B	L. Harrington, RN, PhD, DNP	
		*Evidence Based Anesthesia Practice	NAEBP	72804	DONLN		2	B	J. Walker, CRNA, DNP, FAAN	
	Fall 1 Semester total					26	11			

Doctor of Nursing Practice (Nurse Anesthesia)

Semester	Course Begins	Course *Denotes Advanced Nursing Practice Core	Dept	Number	Type	BSN-DNP Sem. Hours	MS-DNP Sem. Hours	Passing Grade	Course Director
Spring 2	2017 Nurse Anesthesia Spring 2								
	Term 1	*DNP Project 1	NAPIA	83901	DRESR		3	B	J. Walker, CRNA, DNP, FAAN
		*Ethical and Multicultural Healthcare	NAEMH	83106	DLECT		3	B	D. Earley, CRNA, DNP
		Advanced Pathophysiology 2	NPATH	62106	DLECT	2		B	R. Davis, CRNA, DNP
		Anatomical Science 2	AHANA	62102	DLELA	2		B	D. Rowley, PhD
		Advanced Principles of Anesthesia	NANPA	65802	DLECT	5		B	D. Earley, CRNA, DNP
		Pharmacology in Advanced Practice 2	NANAP	64902	DLECT	4		B	R. Davis, CRNA, DNP
		Human Physiology 2	AHPHY	62222	DLECT	2		B	T. D. Johnson, PhD
		Biomedical Instrumentation	NABMI	62603	DLECT	2		B	M. Bullerwell, CRNA, DNP
	Term 2	*Influencing Healthcare Policy	NAIHP	83104	DONLN		3	B	J. Walker, CRNA, DNP, FAAN
		*Translational Research	NATRR	83112	DONLN	3		B	L. Harrington, RN, PhD, DNP
		Clinical Skills Inquiry	NACLO	61608	DHPGR	1		B	A. Umnus, CRNA, DNP
		Nervous System	NANEU	66301	DLELA	6		B	P. Pfaffinger, PhD
		Radiology for Nurse Anesthesia Practice	NARAD	61151	DLECT	1		B	A. Langley, CRNA, DNP
	Term 3	*Quality Outcomes Management	NAQOM	83108	DONLN		3	B	L. Harrington, RN, PhD, DNP
	Spring 2 Semester total					28	12		
Fall 2	2017 Nurse Anesthesia Fall 2								
	Term 1	Clinical Practicum (see below)			CPRAC	12		B	J. Walker, CRNA, DNP, FAAN
		Seminars in Anesthesia	NASEM	71801	DHPGR	1		B	J. Walker, CRNA, DNP, FAAN
		*DNP Project 2	NAPIA	84902	DRESR		4	B	J. Walker, CRNA, DNP, FAAN
		*Emerging Sciences in Healthcare	NEMER	82111	DONLN		2	B	L. Harrington, RN, PhD, DNP
	Term 2	*Approaches to Healthcare Education	NAAHE	83107	DONLN		3	B	D. Earley, CRNA, DNP
	Fall 2 Semester total					13	9		
Spring 3	2018 Nurse Anesthesia Spring 3								
	Term 1	Clinical Practicum (see below)			CPRAC	12		B	J. Walker, CRNA, DNP, FAAN
		*Evidence Based Anesthesia Practice	NAEBP	72804	DONLN	2		B	J. Walker, CRNA, DNP, FAAN
		*DNP Project 1	NAPIA	83901	DRESR	3		B	J. Walker, CRNA, DNP, FAAN
		Critical Concepts in Anesthesia 1	NACCA	71802	DEXAM	1		B	A. Umnus, CRNA, DNP
	Spring 3 Semester total					18	0		
Fall 3	2018 Nurse Anesthesia Fall 3								
	Term 1	Clinical Practicum (see below)			CPRAC	12		B	J. Walker, CRNA, DNP, FAAN
		*DNP Project 2	NAPIA	84902	DRESR	4		B	J. Walker, CRNA, DNP, FAAN
		Critical Concepts in Anesthesia 2	NACCA	71805	DEXAM	1		B	A. Umnus, CRNA, DNP
	Term 3	Comprehensive Examination in Anesthesia	NACEA	70810	DEXAM	0		B	J. Walker, CRNA, DNP, FAAN
	Fall 3 Semester total					17	0		

Doctor of Nursing Practice (Nurse Anesthesia)

Semester	Course Begins	Course *Denotes Advanced Nursing Practice Core	Dept	Number	Type	BSN-DNP Sem. Hours	MS-DNP Sem. Hours	Passing Grade	Course Director
		Clinical Practicum 1 - 18 (2 Sem hrs per month)							
Fall 2, Spring 3, Fall 3	Terms 1-3	General/Trauma Anesthesia 1	NABOR	72101	CPRAC	2		B	J. Walker, CRNA, DNP, FAAN
		General/Trauma Anesthesia 2	NABOR	72102	CPRAC	2		B	J. Walker, CRNA, DNP, FAAN
		General/Trauma Anesthesia 3	NABOR	72103	CPRAC	2		B	J. Walker, CRNA, DNP, FAAN
		General/Trauma Anesthesia 4	NABOR	72104	CPRAC	2		B	J. Walker, CRNA, DNP, FAAN
		General/Trauma Anesthesia 5	NABOR	72105	CPRAC	2		B	J. Walker, CRNA, DNP, FAAN
		Obstetric/Gynecologic Anesthesia 1	NABOB	72201	CPRAC	2		B	J. Walker, CRNA, DNP, FAAN
		Obstetric/Gynecologic Anesthesia 2	NABOB	72202	CPRAC	2		B	J. Walker, CRNA, DNP, FAAN
		Obstetric/Gynecologic Anesthesia 3	NABOB	72203	CPRAC	2		B	J. Walker, CRNA, DNP, FAAN
		General/Geriatric Anesthesia 1	NAVAM	72301	CPRAC	2		B	J. Walker, CRNA, DNP, FAAN
		General/Geriatric Anesthesia 2	NAVAM	72302	CPRAC	2		B	J. Walker, CRNA, DNP, FAAN
		General/Geriatric Anesthesia 3	NAVAM	72303	CPRAC	2		B	J. Walker, CRNA, DNP, FAAN
		General/Geriatric Anesthesia 4	NAVAM	72304	CPRAC	2		B	J. Walker, CRNA, DNP, FAAN
		General/Neurosurgical Anesthesia 1	NASLH	72401	CPRAC	2		B	J. Walker, CRNA, DNP, FAAN
		General/Neurosurgical Anesthesia 2	NASLH	72402	CPRAC	2		B	J. Walker, CRNA, DNP, FAAN
		General/Private Practice Anesthesia 1	NAMOR	72501	CPRAC	2		B	J. Walker, CRNA, DNP, FAAN
		Cardiovascular/Thoracic Anesthesia 1	NACVT	72601	CPRAC	2		B	J. Walker, CRNA, DNP, FAAN
		Cardiovascular/Thoracic Anesthesia 2	NACVT	72602	CPRAC	2		B	J. Walker, CRNA, DNP, FAAN
		Pediatric Anesthesia	NAPED	72701	CPRAC	2		B	J. Walker, CRNA, DNP, FAAN

Distance Learning Analysis

BCM Doctor of Nursing Practice Curriculum	Course Type Abbreviations				
	Abbrev.	Interpretation			
	DONLN	Didactic Online			
	DLECT	Didactic Lecture			
	DLELA	Didactic Lecture & Lab			
	DLEOL	Didactic Lecture & Online			
	DHPGR	Didactic High Performance Groups			
	DRESR	Didactic Research			
	DEXAM	Didactic Examination			
	CPRAC	Clinical Practicum			
Course	Dept	Number	Type	Traditional Learning	Distance Learning
Advanced Health Assessment	NAAHA	63401	DLELA	3	
Approaches to Healthcare Education	NAAHE	83107	DONLN		3
Ethical and Multicultural Healthcare	NAEMH	83106	DLECT	3	
Professional Philosophy and Scholarship	NAPAS	83102	DONLN		3
Influencing Healthcare Policy	NAIHP	83104	DONLN		3
Leading & Managing Healthcare Systems	NLMHS	83105	DONLN		3
Theories and Concepts in Healthcare	NPTHC	83101	DONLN		3
Quality Outcomes Management	NAQOM	83108	DONLN		3
Biostatistics	NBIOS	83110	DONLN		3
Decision Science & Informatics in Healthcare	NHIDS	83109	DONLN		3
Translational Research	NATRE	83113	DONLN		3
Evidence Based Anesthesia Practice	NAEBP	72804	DRESR		2
Advanced Pathophysiology	NPATH	62105	DLECT	2	
Anatomical Science	AHANA	64101	DLELA	5	
Clinical Biochemistry	AHBIO	63121	DLECT	3	
Principles of Anesthesia	NANPA	64801	DLECT	4	
Pharmacology in Advanced Practice	NANAP	63901	DLECT	3	
Human Physiology	AHPHY	64221	DLECT	4	
Immunology for Allied Health	AHIMM	62131	DLECT	2	
Physics for Anesthesia Practice	NAPAP	61602	DLECT	1	
Emerging Sciences in Healthcare	NEMER	83111	DONLN		2
Advanced Pathophysiology	NPATH	62106	DLECT	2	
Anatomical Science 2	AHANA	62102	DLELA	2	
Advanced Principles of Anesthesia	NANPA	65802	DLECT	5	
Pharmacology in Advanced Practice 2	NANAP	64902	DLECT	4	
Human Physiology 2	AHPHY	62222	DLECT	2	
Biomedical Instrumentation	NABMI	62603	DLECT	2	
Radiology for Allied Health	NARAD	61151	DLECT	1	
Clinical Skills Inquiry	NACLO	61608	DHPGR	1	
Nervous System	NANEU	66301	DLELA	6	
Seminars in Anesthesia	NASEM	71801	DHPGR	1	
DNP Project 1	NAPIA	83901	DRESR	3	
Clinical Practicum (see below)				12	
DNP Project 2	NAPIA	84902	DRESR	4	
Critical Concepts in Anesthesia 1	NACCA	71802	DEXAM	1	
Clinical Practicum (see below)				12	
Comprehensive Examination in Anesthesia	NACEA	70810	DEXAM	0	
Critical Concepts in Anesthesia 2	NACCA	71805	DEXAM	1	
Clinical Practicum (see below)				12	
Total Semester Hours				101	31
Percentage of Semester Hours				76.5%	23.5%

Orthotics and Prosthetics CURRICULUM SEQUENCING Class of 2018

Year 1																	
FALL 1 (FA16)						FA17						FA18					
Course		Title	Hours	Term Course Ends	Course Director	Course		Title	Hours	Term Course Ends	Course Director	Course		Title	Hours	Term Course Ends	Course Director
OPANA	63101	Anatomical Sciences	3	Fall 1	Dr. Zhang	OPORB	72102	O&P Research II	2	Fall 3	Melissa Suter	OPORD	72101	O&P Research IV	2	Fall 3	Melissa Suter
OPCC	61401	Cultural Competency	1	Fall 1	Carl Fasser	OPCRA	77101	Clinical Rotation I	7	Varies	Ashley Mullen	OPCRE	76105	Clinical Rotation V	6	Fall 3	Ashley Mullen
AHHBC	62201	Health Behavioral Counseling	2	Fall 3	Robert McLaughlin	OPCRB	77102	Clinical Rotation II	7	Varies	Ashley Mullen	OPCRF	76106	Clinical Rotation VI	6	Fall 3	Ashley Mullen
OPBMF	62101	Biomechanics Fundamentals	2	Fall 2	Jared Howell							OPCSE	71105	Clinical Seminar V	1	Fall 3	Ashley Mullen
OPMSS	62102	Material Science and Selection	2	Fall 3	Michael Van Wie							OPCSF	71106	Clinical Seminar VI	1	Fall 3	Ashley Mullen
OPFOP	62101	Foundations of O&P	2	Fall 1	Joshua Utay												
OPPEA	62101	Physical Examination I	2	Fall 3	Joshua Utay												
OPSCO	66101	Spinal & Cranial Orthotic Management	6	Fall 2	Joshua Utay												
OPULO	64101	Upper Limb Orthotic Management	4	Fall 3	Joshua Utay												
OPULP	69101	Upper Limb Prosthetic Management	9	Fall 2	Fanny Schultea												
OPPPP	62101	Principles of Professional Practice	2	Fall 3	Jared Howell												
OPCDA	73101	Clinical Skills Development I	3	Fall 3	Jared Howell												
OPPED	63103	Pedorthic Management	3	Fall 3	Ashley Mullen												
Total Hours			41			Total Hours			16			Total Hours			16		

SPRING 1 (SP17)						SP18					
Course		Title	Hours	Term Course Ends	Course Director	Course		Title	Hours	Term Course Ends	
AHHRM	62441	Health Research Methods	2	Spring 5	T. David Johnson	OPORC	72203	O&P Research III	2	Spring 6	Melissa Suter
OPETH	62421	Medical Ethics	2	Spring 5	Jennifer Blumenthal Barby	OPCRC	76203	Clinical Rotation III	6	Spring 6	Ashley Mullen
OPABM	63201	Advanced Biomechanics and Clinical Outcomes	3	Spring 5	Ashley Mullen	OPCRD	76204	Clinical Rotation IV	6	Spring 6	Ashley Mullen
OPPEB	63202	Physical Examination II	3	Spring 5	Joshua Utay	OPCSC	71203	Clinical Seminar III	1	Spring 6	Ashley Mullen
OPFAO	65201	Lower Limb Orthotic Management I	5	Spring 4	Sally Kenworthy	OPCSD	71204	Clinical Seminar IV	1	Spring 6	Ashley Mullen
OPLLO	66201	Lower Limb Orthotic Management II	6	Spring 5	Sally Kenworthy						
OPLLA	68201	Lower Limb Prosthetic Management I	8	Spring 5	Josh Utay						
OPLLB	65202	Lower Limb Prosthetic Management II	5	Spring 6	Jared Howell/Fanny Schultea						
OPAPT	63201	Advanced Topics-Orthotics and Prosthetics	3	Spring 6	Josh Utay/Fanny Schultea						
OPORA	61201	O&P Research I	1	Spring 6	Ashley Mullen						
Total Hours			38			Total Hours			16		

Course Directors	Credentials
Jared Howell	M.S., CPO, FAAOP
Joshua Utay	M.Ed., CPO
Ashley Mullen	MSAT, CO
Robert McLaughlin	Ph.D.
Carl Fasser	PA, DFAAPA
David Rowley	Ph.D.
T. David Johnson	MS, Ph.D.
Jennifer Blumenthal Barby	Ph.D., MA
Fanny Schultea	MS, MEd, CPO, LP
Sally Kenworthy	MPO, CPO, LO
Mike Van Wie	Ph.D., P.E.

Total Credits

127

Course	Title		Hours		Hours
AHANA	64101	Anatomical Sciences (for O&P)	3	AHANA 64101 /Anatomical Sciences (for O&P)	3
AHCC	62401	Cultural Competency	2	AHCC 62401 /Cultural Competency	2
AHHBC	63201	Health Behavioral Counseling	3	AHHBC 63201 /Health Behavioral Counseling	3
OPBMF	62101	Biomechanics Fundamentals	2	OPBMF 62101 /Biomechanics Fundamentals	2
OPMSS	61101	Material Science and Selection	1	OPMSS 61101 /Material Science and Selection	1
OPFOP	62101	Foundations of O&P	2	OPFOP 62101 /Foundations of O&P	2
OPPDA	63101	Physical Diagnosis I	3	OPPDA 63101 /Physical Diagnosis I	3
OPSCO	66101	Spinal & Cranial Orthotic Management	6	OPSCO 66101 /Spinal & Cranial Orthotic Management	6
OPULO	64101	Upper Limb Orthotic Management	4	OPULO 64101 /Upper Limb Orthotic Management	4
OPULP	66101	Upper Limb Prosthetic Management	6	OPULP 66101 /Upper Limb Prosthetic Management	6
OPPPP	62101	Principles of Professional Practice	2	OPPPP 62101 /Principles of Professional Practice	2
AHHRM	62441	Health Research Methods	2	AHHRM 62441 /Health Research Methods	2
AHETH	62421	Medical Ethics	2	AHETH 62421 /Medical Ethics	2
OPORA	61201	O&P Research I	1	OPORA 61201 /O&P Research I	1
OPABM	64201	Advanced Biomechanics and Clinical Outcomes	4	OPABM 64201 /Advanced Biomechanics and Clinical Outcomes	4
OPPDB	62202	Physical Diagnosis II	2	OPPDB 62202 /Physical Diagnosis II	2
OPFAO	67201	Foot and Ankle Orthotic Management	7	OPFAO 67201 /Foot and Ankle Orthotic Management	7
OPLLO	65201	Lower Limb Orthotic Management	5	OPLLO 65201 /Lower Limb Orthotic Management	5
OPLLA	67201	Lower Limb Prosthetic Management I	7	OPLLA 67201 /Lower Limb Prosthetic Management I	7
OPLLB	64202	Lower Limb Prosthetic Management II	4	OPLLB 64202 /Lower Limb Prosthetic Management II	4
OPCPS	62201	Contemporary Practice and Synthesis	2	OPCPS 62201 /Contemporary Practice and Synthesis	2
OPCDB	72202	Clinical Skills Development II	2	OPCDB 72202 /Clinical Skills Development II	2
OPCDA	72101	Clinical Skills Development I	2	OPCDA 72101 /Clinical Skills Development I	2
OPORB	72102	O&P Research II	2	OPORB 72102 /O&P Research II	2
OPTSD	78101	Technical Skills Development Care	8	OPTSD 78101 /Technical Skills Development Care	8
OPPED	78101	Pediatric Core	8	OPPED 78101 /Pediatric Core	8
OPINT	78101	Institutional & Acute Core	8	OPINT 78101 /Institutional & Acute Core	8
OPORC	72203	O&P Research III	2	OPORC 72203 /O&P Research III	2
OPPCA	76201	Prosthetics Core I	6	OPPCA 76201 /Prosthetics Core I	6
OPPCB	76202	Prosthetics Core II	6	OPPCB 76202 /Prosthetics Core II	6
OPOCA	76201	Orthotics Core I	6	OPOCA 76201 /Orthotics Core I	6
OPOCB	76202	Orthotics Core II	6	OPOCB 76202 /Orthotics Core II	6
OPORD	72101	O&P Research IV	2	OPORD 72101 /O&P Research IV	2
OPCSA	78101	Clinical Specialization I	8	OPCSA 78101 /Clinical Specialization I	8
OPCSB	78102	Clinical Specialization II	8	OPCSB 78102 /Clinical Specialization II	8
OPCSC	78103	Clinical Specialization III	8	OPCSC 78103 /Clinical Specialization III	8

MASTER OF SCIENCE PHYSICIAN ASSISTANT PROGRAM - CLASS OF 2018

Semester/Term	Sem. Hrs.
Didactic Fall 1	36
Didactic Spring 1	35
Clinical Fall 1	16
Clinical Spring 2	24
Clinical Fall 3	26
Total MS Degree Credit Hours	137

Course Type	
DLELA	Didactic Lecture & Lab
DLECT	Didactic Lecture & Critical Thinking Session
DHPGP	Didactic High Performance Group
DLESP	Didactic Lecture & Simulated Practice
CPRAC	Clinical Practicum
PASPN	Spanish Simulated Practice
PASEM	Seminar

Fall 1 (2016)	Master Course	Dept	Number	Type	Terms	Sem Hrs	PassGrade	Start Date	Stop Date
Term 1	Clinical Medicine I	PACMD	61501	DLECT	1	1	B		
	Immunology for Allied Health	AHIMM	62131	DLECT	2	2	B		
Term 2	Clinical Biochemistry	AHBIO	63121	DLECT	1,2	3	B		
	Clinical Medicine II	PACMD	61502	DLECT	2	1	B		
	Clinical Prevention	PACLP	62301	DLELA	1,2	2	B		
	Cultural Competency	PACC	62401	DLECT	1,2	2	B		
	Anatomical Sciences I	AHANA	65101	DLELA	1,2,3	5	B		
Term 3	Problem Solving in Medicine	PAPSM	61901	DHPGP	3	1	B		
	Health Behavioral Counseling	AHHBC	62201	DLELA	1,2,3	2	B		
	Human Physiology	AHPHY	64221	DLECT	2,3	4	B		
	Pharmacology	PAPRM	63801	DLECT	2,3	3	B		
	Physical Diagnosis	PAPHD	66601	DLELA	1,2,3	6	B		
	Clinical Genetics	AHGEN	61141	DLECT	3	1	B		
	Clinical Medicine III	PACMD	63503	DLECT	3	3	B		
Semester Total Per Student						36			

Spring 1 (2017)	Master Course	Dept	Number	Type	Terms	Sem Hrs	PassGrade	Start Date	Stop Date
Term 1	Anatomical Sciences II	AHANA	62102	DLELA	1	2	B		
	Human Physiology	AHPHY	62222	DLECT	1	2	B		
	Pharmacology	PAPRM	62811	DLECT	1	2	B		
	Clinical Medicine IV	PACMD	62511	DLECT	1	2	B		
Term 2	Diagnostic Testing	PADIA	62701	DLECT	2	2	B		
	Clinical Medicine V	PACMD	62512	DLECT	2	2	B		
	Health Research Methods	AHHRM	62441	DLECT	2	2	B		
	Medical Ethics	AHETH	62421	DLESP	2	2	B		
	Women's Health	PAWHI	62521	DLECT	2	2	B		
Term 3	Electrocardiography	PAECG	62711	DLELA	3	2	B		
	Clinical Medicine VI	PACMD	62513	DLECT	3	2	B		
	Pediatrics	PAPED	62531	DLECT	3	2	B		

	Physical Diagnosis	PAPHD	63611	DLELA	1,2,3	3	B		
	Problem Solving in Medicine	PAPSM	62911	DHPGP	1,2,3	2	B		
	Professional Role Issues	PAPRI	62411	DLECT	1,2,3	2	B		
	Behavioral Dynamics	PABDN	64431	DLECT	2,3	4	B		
	Clinical Readiness Exam	PACRE	60911	DHPGP	3	0	P		

Semester Total Per Student **35**

Fall 2 (2017)	Master Course	Dept	Number	Type	Terms	Sem Hrs	PassGrade	Start Date	Stop Date
Term 1AB Term 2AB	Internal Medicine-Inpatient	PAIMI	78621	CPRAC		8	B		
	Internal Medicine-Outpatient	PAIMO	74631	CPRAC		4	B		
	Gynecology/Obstetrics	PAGYN	74641	CPRAC		4	B		
	Pediatric-Inpatient	PAPDI	74751	CPRAC		4	B		
	Pediatric-Outpatient	PAPDO	74761	CPRAC		4	B		
	Psychiatry	PAPSY	74671	CPRAC		4	B		
	Emergency Medicine	PAERM	74681	CPRAC		4	B		
	Surgery	PASUR	74691	CPRAC		4	B		

Semester Total Per Student **16**

Spring 2 (2018)	Master Course	Dept	Number	Type	Terms	Sem Hrs	PassGrade	Start Date	Stop Date
Term 3AB Term 4AB Term 5AB	Internal Medicine-Inpatient	PAIMI	78621	CPRAC		8	B		
	Internal Medicine-Outpatient	PAIMO	74631	CPRAC		4	B		
	Gynecology/Obstetrics	PAGYN	74641	CPRAC		4	B		
	Pediatric-Inpatient	PAPDI	74751	CPRAC		4	B		
	Pediatric-Outpatient	PAPDO	74761	CPRAC		4	B		
	Psychiatry	PAPSY	74671	CPRAC		4	B		
	Emergency Medicine	PAERM	74681	CPRAC		4	B		
	Surgery	PASUR	74691	CPRAC		4	B		

Semester Total Per Student **24**

Fall 3 (2018)	Master Course	Dept	Number	Type	Terms	Sem Hrs	PassGrade	Start Date	Stop Date
Term 6AB Term 6CD Term 6E	Geriatric Medicine	PAGER	74721	CPRAC		4	B		
	Community Family Medicine	PACFM	78731	CPRAC		8	B		
	Physical Medicine and Rehabilitation	PAPMR	74781	CPRAC		4	B		
	Research 1	PARS1	74531	PASEM		4	B		
	Research 2	PARS2	74541	PASEM		4	B		
	Master Paper	PAMPP	74800	PASEM		4	B		
	Professional Role Issues 2	PAPRI	71511	PASEM		1	B		
	Cultural Competency 2	PACC	71521	PASEM		1	B		
	Practice Readiness Examination	PAPRE	74700	DHPGP		0	P		

Semester Total Per Student **26**

137