

A high-angle photograph of the Baylor College of Medicine building, a large, light-colored stone structure with a red-tiled roof. In the foreground, a circular fountain with water spraying upwards is surrounded by trees and a paved plaza. Three flagpoles stand near the fountain, flying the American flag, the Texas state flag, and a blue and white Baylor College of Medicine flag. A sign on the building reads "and Lillie Cullen Building".

Baylor College of Medicine

SCHOOL OF
MEDICINE

Baylor College of Medicine



BAYLOR BY THE NUMBERS

- | | |
|------------------------|--|
| No. 1 | LEAST EXPENSIVE PRIVATE MEDICAL SCHOOL IN THE U.S. |
| 20TH | IN NATION FOR FUNDING FROM THE NATIONAL INSTITUTES OF HEALTH |
| 1ST | IN TEXAS FOR FUNDING FROM THE NATIONAL INSTITUTES OF HEALTH |
| 9 | AFFILIATED HOSPITALS |

U.S. NEWS & WORLD REPORT RANKING

TEXAS

- | | |
|-----------------------|--|
| 1ST | IN TEXAS FOR PRIMARY CARE AND RESEARCH |
|-----------------------|--|

NATIONALLY

- | | | | |
|------------------------|-------------------------------|------------------------|-----------------------|
| 8TH | FOR PEDIATRICS | 16TH | FOR RADIOLOGY |
| 14TH | FOR ANESTHESIOLOGY | 19TH | FOR SURGERY |
| 16TH | FOR OBSTETRICS AND GYNECOLOGY | 22ND | FOR RESEARCH |
| 16TH | FOR PRIMARY CARE | 26TH | FOR INTERNAL MEDICINE |

OUR MISSION

Baylor College of Medicine is a health sciences university that creates knowledge and applies science and discoveries to further education, healthcare and community service locally and globally.

OUR VISION

Improving health through science, scholarship and innovation.

OUR VALUES

Respect

- Value others and treat them with courtesy, politeness and kindness
- Promote and support diversity, inclusion and equity
- Encourage civil dialogue that considers diverse opinions and ideas

Integrity

- Interact with honesty, consistency and transparency
- Operate in ways that demonstrate ethical behaviors
- Foster personal accountability to build trust

Innovation

- Cultivate creative ideas and unique talents across the organization
- Embrace a culture of continuous improvement
- Inspire the creation and application of new knowledge

Teamwork

- Sustain a culture that values collaboration
- Communicate openly to enhance understanding
- Establish effective partnerships

Excellence

- Promote the highest standards of safety, quality and service
- Strive to excel in every aspect of our mission
- Support an environment that inspires the best from our people

BAYLOR COLLEGE OF MEDICINE SCHOOL OF MEDICINE

MISSION: to develop diverse, compassionate physician leaders and educators who provide expert patient-centered care to diverse populations, supported by evidence-based practice and scientific innovation.

VISION: to serve as a model for innovation and excellence in medical education pedagogy. Through personalization of training, we empower our learners and faculty to:

- Care for a diverse community of patients
- Educate the next generation of physician leaders
- Pursue scientific discovery

TABLE OF CONTENTS

3 Our Schools

5 The Baylor Experience

10 Admissions & Tuition

12 Timeline

18 The Residency Match

20 The City of Houston

21 The City of Temple

22 The Baylor Clinical Experience

25 Student Life

TRANSFORM YOUR DREAMS INTO YOUR FUTURE

Baylor College of Medicine is a health sciences university dedicated to training the next generation of leaders in the biomedical field.

We are committed to transforming healthcare both locally and globally, which is reflected in our focus on inquiry, service and innovation. Baylor is a top-ranked school with diverse, supportive and service-oriented students and faculty, and is the least expensive private medical school in the country.

We provide the curriculum, services, resources and support to help you succeed. You provide the passion, effort and commitment. Together we will transform your dreams into your future.

You will begin your journey to becoming a physician at a time when the importance of this role is clearer than it has been at any point in recent memory.



Paul Klotman, M.D.
President and Chief Executive Officer
Executive Dean



Alicia Monroe, M.D.
Provost and Senior Vice President
of Academic and Faculty Affairs



Jennifer Christner, M.D.
Senior Dean, School of Medicine
and School of Health Professions



Jesus G. Vallejo, M.D.
Associate Dean of Admissions, Diversity,
Equity and Multicultural Affairs



Alex Arroliga, M.D.
Regional Dean, Temple Campus
Chief Medical Officer, Baylor
Scott & White Health



Christian Cable, M.D.
Associate Dean of Admissions and
Students, School of Medicine
Temple Campus



SCHOOL OF MEDICINE



HOUSTON AND TEMPLE CAMPUSES: Ranked first in Texas and among the top in the country by *U.S. News & World Report*, Baylor College of Medicine's School of Medicine is the least expensive private medical school in the U.S. Exceptionally diverse clinical affiliates and a collaborative, supportive culture set Baylor apart as a leader among the world's best medical schools.

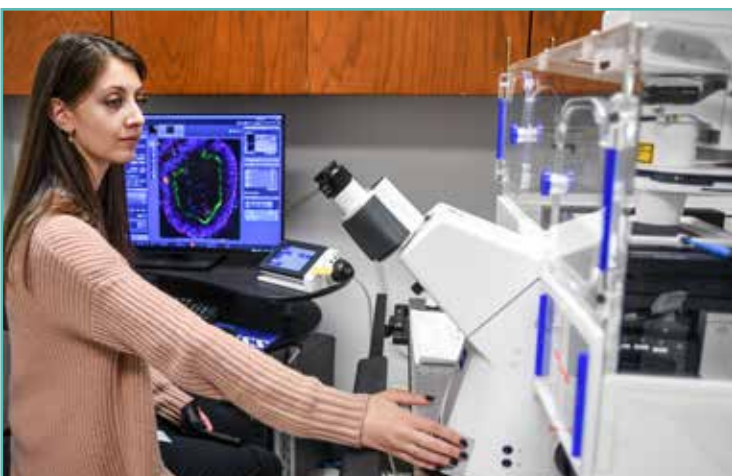
SCHOOL OF HEALTH PROFESSIONS



At Baylor, health professions include nurse anesthesia (ranked second in the nation), physician assistant (ranked third in the nation) genetic counseling and orthotics and prosthetics. Medical students gain valuable interprofessional experience in shared learning opportunities with students from these programs and affiliated programs in Houston.

OUR SCHOOLS

GRADUATE SCHOOL OF BIOMEDICAL SCIENCES



One of the top 25 graduate schools of biomedical sciences in the nation, the school gives medical students interested in research a wide array of choices for short-term projects or in-depth dual degree programs. Baylor ranks 20th in the nation and first in Texas in funding to medical schools from the National Institutes of Health.

NATIONAL SCHOOL OF TROPICAL MEDICINE



Baylor is home to one of the few schools in the country devoted to the neglected diseases that disproportionately afflict "the bottom billion," the world's poorest people. Medical students have opportunities to take classes and conduct research in tropical medicine, as well as the option to pursue a Diploma in Tropical Medicine as part of the Global Health Track.

SCHOOL OF MEDICINE:

ONE SCHOOL, TWO CAMPUSES

As educators, our mission is to prepare our students to become the next generation of leaders in biomedical and health sciences with competencies founded in inquiry, service and innovation.

Baylor College of Medicine is a top-ranked school with diverse faculty and students who are supportive and service-oriented. Your training at Baylor College of Medicine will leave you in less debt than other schools.

We provide the curriculum, services, resources and support to help you succeed — as demonstrated by our students' averages in testing, placement of our graduates in outstanding residency programs and the success of our alumni in providing patient-centered care and serving as local, national and international leaders. You provide the passion, effort and commitment.



As a part of our commitment to caring for Texans across the state, we now have a regional campus located in Temple, Texas. We're thrilled to be welcoming the inaugural class in summer 2023, which will expand our medical student class size to 226, our largest ever. We also are excited to have Baylor Scott & White Health serve as the home of the Baylor College of Medicine School of Medicine Temple campus. Students at both campuses will have the opportunity to train in Texas's top healthcare institutions while training under Baylor's curriculum, faculty and mission.

THE BAYLOR EXPERIENCE TRAINING DURING A PANDEMIC

The COVID-19 pandemic required medical schools across the country to reassess how to train students in the classroom and in the clinic, and Baylor College of Medicine was no exception. The School of Medicine transformed the curriculum for all four years of training while tending to the safety and concerns of all students. Here's how we did it:



CURRICULUM

- Successful in-person anatomy for all students, with PPE
- Successful implementation of hybrid learning models in first- and second-year doctoring courses
- In-person clinical sessions with preceptors
- Successful implementation of VoiceThread to serve asynchronous learning sessions
- Successful implementation into coursework of InteDashboard, a team-based learning platform
- At-home testing for formative quizzes and summative exams

CLINICAL TRAINING

- Students able to resume clinical with modified schedules to allow on-time graduation
- To prepare for residency applications, development of 2-week elective experiences with individualized schedules to accommodate student preference
- Modification of National Board of Medical Examiners subject exam administration and Standardized Patient assessment to optimize student and patient safety
- Virtual curriculum — interdisciplinary — using Aquifer modules and home-grown resources to supplement clinical learning
- Addition of telehealth curriculum and assessment
- Addition of curriculum related to ethics of COVID-19 research, coronavirus-specific education and in-person PPE training

I was highly impressed with the way Baylor handled the transition to online learning during the beginning of the coronavirus pandemic. From the get-go, Student Affairs deans were active and involved in creating a community to support preclinical students and were transparent in the challenges and changes made for clinical students. As part of a group of upperclassmen that created comprehensive schedules and support systems for preclinical students that were rapidly switched into online learning, I can say I was so reassured at my decision to go to Baylor when I saw the community, generosity and availability of our faculty and students.

DR. ZIBA COLAH, RESIDENT IN THE MENNINGER DEPARTMENT OF PSYCHIATRY AND BEHAVIORAL SCIENCES AT BAYLOR



THE BAYLOR EXPERIENCE

We will help you reach your full potential as a compassionate healthcare provider and lifelong learner with the skills necessary to lead and participate in effective teams. Within the first 18 months of medical school, our faculty conveys the knowledge of the medical sciences required for future physicians.

MASTERING TRANSFERABLE SKILLS

Breadth of knowledge in the medical sciences is essential, but tomorrow's healthcare leaders also need transferable skills, such as communication, leadership and conflict management. We continue to develop active learning strategies that require the transfer and application of new knowledge to help build deep understanding and mastery of content and skills. Since 2005, more than 98% of Baylor students pass the USMLE Step 1 exam on their first try, compared to the 97% national rate. As of January 2022, the USMLE Step 1 exam has transitioned to a pass/fail exam.

The 2020-2021 report from the National Board of Medical Examiners showed that Baylor students scored an average of 254 on the Step 2 CK (clinical knowledge) exam, compared to the national average of 245.



PARTAKE (POPULATIONS AT RISK: TREATMENT, ADVOCACY, KNOWLEDGE, EXPERIENCE)

This program introduces newly matriculated medical students to social determinants of health and the focus of Baylor College of Medicine students on service. Students work through six case and discussion-based topics. Students also visit local community organizations where Baylor students do community service and/or service learning.

SERVICE LEARNING PROGRAM

The program allows students from all classes to participate in approved yearlong service-learning projects as part of a program that culminates in qualifying students receiving “Dean’s Distinction in Service Learning.”

CURRICULUM RENEWAL

The School of Medicine is currently working on a revised four-year curriculum. The guiding principles of the new curriculum include integrating science, competency-based assessment and precision education.

I realized that Baylor puts an emphasis not only on our development as students, but also as individuals. They do this by encouraging us to interact and work with each other through our PRN groups, various team-based learning classes and social events.

BELIA CAMARENA
MEDICAL STUDENT
AT BAYLOR



SCHOOL OF MEDICINE WELCOMES MOST DIVERSE CLASS IN 2021

185
STUDENTS



98 WOMEN



87 MEN

AGE RANGE: 20-31 YEARS

57

UNDERREPRESENTED IN
MEDICINE (URM) STUDENTS



35 LATINX STUDENTS

22 BLACK STUDENTS

THE BAYLOR EXPERIENCE CONTINUED

INTERPROFESSIONAL LEARNING

Learning to both lead and participate as part of interprofessional teams is an essential element of medical training. Effective teamwork in clinical settings leads to better health outcomes for patients.

Medical students are engaged in interprofessional educational experiences throughout their training, ranging from classroom interactions to simulated and clinical experiences. Students learn to appreciate the varied roles of professionals on the healthcare team, and to optimize collaboration to ensure high-quality patient care.

ELECTIVE PROGRAM Electives give you the opportunity to gain exposure and deepen your understanding of topics that align with your career and academic interests. You will be able to choose from approximately 300 elective courses to tailor your education.



It was beneficial and enjoyable having anatomy class with the physician assistant and nurse anesthesia students. These interactions built a team-oriented mentality that continued to grow during our second-year rotations and throughout the remainder of our training.

PATRICK HUNT
M.D./PH.D. STUDENT



RESEARCH The best doctors are those who can reason like a scientific investigator: think critically, generate hypotheses, analyze information, problem-solve and make sound decisions based on data. Our students often pursue translational laboratory research, clinical research and research in the humanities, including medical education, health policy and ethics.

Baylor faculty have either led or contributed to many of the major advances in biomedical sciences.



Discover research that matches your interests at bcm.edu/research.

Baylor's Rank in
Funding from
National Institutes
of Health.

NATIONALLY



20th

SERVICE Students have many opportunities to build relationships through both College-run and student-initiated programs.



Simulation space at
Temple College in Temple, Texas

SIMULATION Practicing in simulated scenarios helps students learn the skills needed for their medical careers. Students interact with standardized patients (healthy individuals trained to simulate an actual patient) to hone diagnostic and communication skills.

WELLNESS Self-care and healthy habits are important not only to a healthcare provider's well-being, but also to better care for and counsel their patients. Wellness is integrated throughout the curriculum, student support services and extracurricular activities at Baylor.



Explore bcm.edu/community for information about community initiatives



IN TEXAS

12
DEPARTMENTS



TOP 30

GRADUATE WITH LESS DEBT

Baylor College of Medicine is the least expensive private medical school in the nation.

AVERAGE DEBT

\$194,280*

PUBLIC
MEDICAL SCHOOL

\$218,746*

PRIVATE
MEDICAL SCHOOL

\$119,892

BAYLOR COLLEGE
OF MEDICINE CLASS OF 2021

*Source: AAMC Debt, Costs and Loan Repayment Fact Card 2021

TUITION & FEES

	Texas Resident	Non- Resident
TUITION	\$19,425	\$32,525
FEES	\$3,379	\$3,379
HEALTH INSURANCE	\$5,151	\$5,151
TOTAL	\$27,955	\$41,055

Source: 2022-23 Academic Year Amounts for First-Year Medical Student

 **FOR FINANCIAL AID ASSISTANCE, CALL THE OFFICE OF STUDENT FINANCIAL AID AT 713.798.4603.**

In 1969, Baylor and the State of Texas entered into an agreement that allows Baylor to offer legal residents of Texas the same tuition rate as state-supported medical schools. Interviewed applicants who claim Texas as their legal residence are required to complete a residence questionnaire.

To help students with the cost of medical education, Baylor offers financial assistance through federal and institutional loans, scholarships and work-study programs. The Office of Student Financial Aid assists students with the application process and determines their eligibility for these programs.

THE HOLISTIC REVIEW PROCESS

Baylor College of Medicine, through a holistic review process, is committed to selecting a highly qualified entering class each year to further our mission of excellence in patient care, research, education, and community service to an increasingly diverse society. As we seek to matriculate students to further the mission of the College, the holistic admissions process gives balanced consideration in a flexible, individualized way to the applicant's experiences, attributes, and academic metrics and, when considered in combination, how the individual might contribute value to the medical profession.



For information regarding the admissions process, please visit our website at bcm.edu/admissions

IMPORTANT DATES FOR CLASS ENTERING 2023

MAY 2	●	TMDAS application (primary) can be electronically accessed by prospective applicants
MAY - NOVEMBER	●	CASPer Online Situational Judgment Test (view test dates)
JUNE 1	●	Baylor's supplemental application opens No invitation necessary; open to all applicants
JUNE - DECEMBER	●	Applications are holistically reviewed by the Admissions Committee and invitations to interview are extended
AUGUST - JANUARY	●	Interviews are conducted
NOV. 1	●	Submission Deadline for TMDAS application (5 p.m. CST)
NOV. 15	●	TMDAS Letters of Evaluation deadline and Baylor supplemental application deadline (5 p.m. CST)
OCTOBER - MAY	●	Merit scholarships awarded to accepted applicants
JANUARY	●	Certiphi background checks are sent to all accepted applicants
FEB. 17	●	Deadline to rank schools of preference in TMDAS
MARCH 3	●	TMDAS match results are announced
APRIL 30	●	Applicants can hold only one offer of admission
MAY 15	●	Last day to make offers of acceptance to alternates holding acceptances at other Texas medical schools
MID-JULY	●	Orientation begins for the entering class

OUR HISTORY

1897-1969

- BAYLOR COLLEGE OF MEDICINE
- BAYLOR SCOTT & WHITE HEALTH

1897 Dr. Arthur C. Scott, Sr. and Dr. Raleigh R. White, Jr. enter into full partnership and their reputation grows rapidly.

1900 University of Dallas medical department opened to improve the practice of medicine in North Texas.

1903 Texas Baptist Memorial Sanitarium, which today is Baylor University Medical Center, is established in Dallas. Chartered on Oct. 16, 1903, by the state of Texas, the hospital began in a 14-room renovated house.

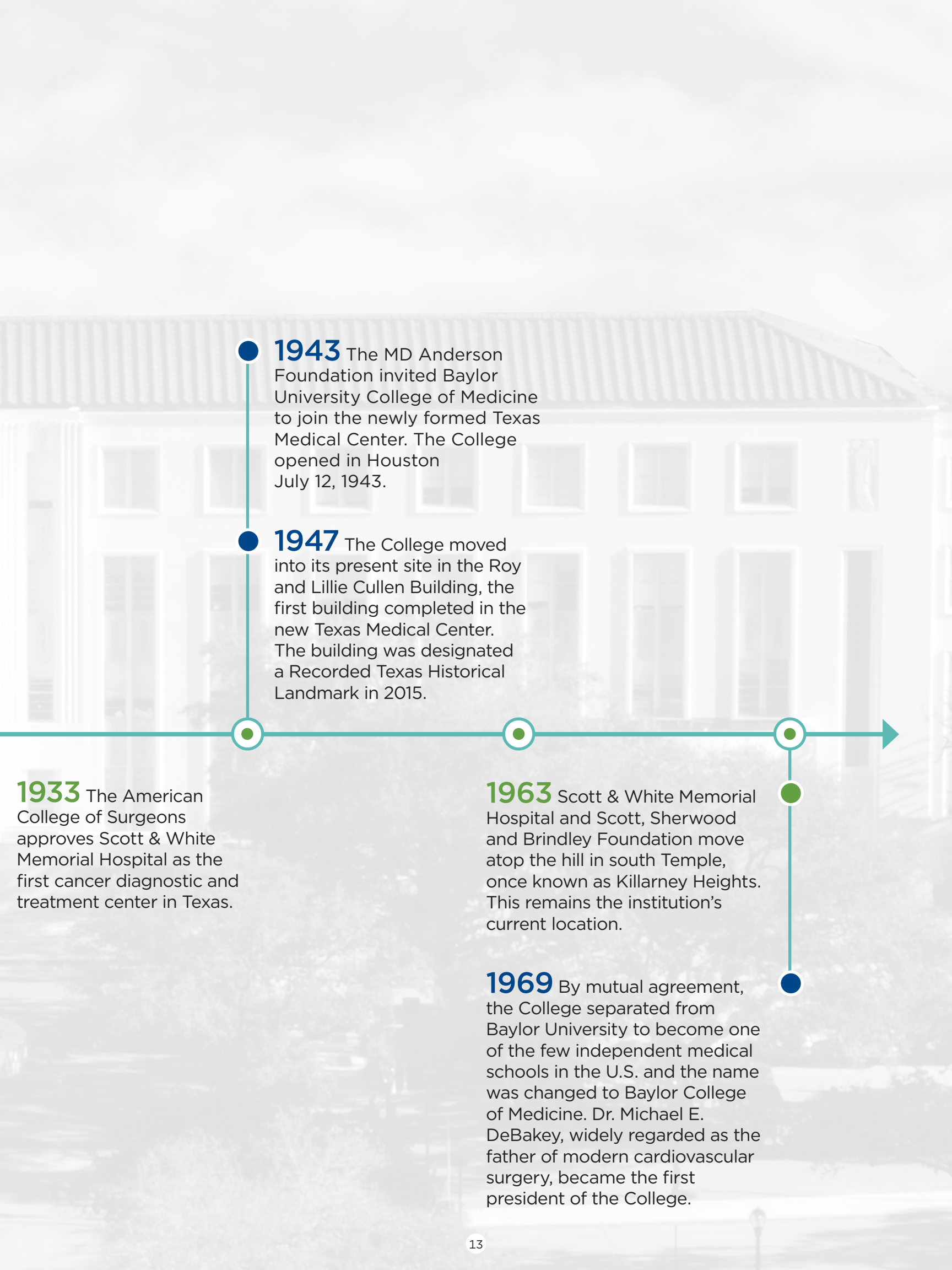
1903 The young medical school formed an alliance with Baylor University in Waco and the name changed to Baylor University College of Medicine.

1904 Dr. Arthur C. Scott, Sr. and Dr. Raleigh R. White, Jr. open their own hospital, Temple Sanitarium, in Temple.

1921 Texas Baptist Memorial Sanitarium becomes Baylor Hospital to reflect its relationship with Baylor University in Waco, Texas. The hospital, located in downtown Dallas, is surrounded by the Baylor University College of Medicine, Baylor College of Dentistry, Baylor University School of Nursing and Baylor School of Pharmacy.

1922 The name of Temple Sanitarium changes to Scott & White Memorial Hospital.

1928 Scott & White Memorial Hospital begins training resident physicians.

A horizontal timeline with a teal line and circular markers. The markers alternate between blue and green. Vertical lines connect the markers to text blocks. The background is a faded image of a large, multi-story building with many windows.

1933 The American College of Surgeons approves Scott & White Memorial Hospital as the first cancer diagnostic and treatment center in Texas.

1943 The MD Anderson Foundation invited Baylor University College of Medicine to join the newly formed Texas Medical Center. The College opened in Houston July 12, 1943.

1947 The College moved into its present site in the Roy and Lillie Cullen Building, the first building completed in the new Texas Medical Center. The building was designated a Recorded Texas Historical Landmark in 2015.

1963 Scott & White Memorial Hospital and Scott, Sherwood and Brindley Foundation move atop the hill in south Temple, once known as Killarney Heights. This remains the institution's current location.

1969 By mutual agreement, the College separated from Baylor University to become one of the few independent medical schools in the U.S. and the name was changed to Baylor College of Medicine. Dr. Michael E. DeBakey, widely regarded as the father of modern cardiovascular surgery, became the first president of the College.

OUR HISTORY

1970-2021

- BAYLOR COLLEGE OF MEDICINE
- BAYLOR SCOTT & WHITE HEALTH

1972 The Michael E. DeBakey High School for Health Professions, the first high school in the country to specialize in medical professions, opened as a partnership between the Houston Independent School District and Baylor College of Medicine. Today, the Baylor Magnet School Network includes six additional high schools and three middle schools in Texas.

1991 Scott & White Memorial Hospital becomes approved by the Accreditation Council for Graduate Medical Education to implement an Emergency Medicine Residency Program—the second hospital in Texas to do so.

1995 Scott & White Memorial Hospital is selected as the only site in Texas and one of two in the U.S. to study gene therapy of cancer by introducing a manufactured gene substance directly into cancer masses.

1997 Scott & White Memorial Hospital and Scott & White Clinic are named one of the nation's 15 fully integrated healthcare systems (in Hospitals & Health Networks).

2013 Baylor Health Care System and Scott & White Healthcare join forces and create a new health system, Baylor Scott & White Health, and become the largest not-for-profit healthcare system in the state of Texas.

2014 Baylor Scott & White Health becomes one of nine Texas health systems joining forces as the Texas Care Alliance to share clinical and administrative data to improve quality and efficiency, lower healthcare costs and accelerate medical innovation in patient care.

2014 Baylor College of Medicine and Catholic Health Initiatives entered a joint venture partnership to co-own the Baylor St. Luke's Medical Center, formerly St. Luke's Episcopal Hospital.

2015 The Baylor College of Medicine Dan L Duncan Center earned Comprehensive Cancer Center designation from the National Cancer Institute.

2003 Scott & White Memorial Hospital is named among the 100 Top Hospitals in the National Benchmarks for Success study as a major teaching hospital.

2006 The first Human Genome Project effort at the Baylor College of Medicine Human Genome Sequencing Center was completed, with chromosomes 3, 12, and 30 Mb of X (~10 percent of the genome).

2020 In November, Baylor College of Medicine and Baylor Scott & White Health announced a new affiliation to develop a progressive four-year regional medical school campus in Temple, Texas.

2023 In the summer, Baylor College of Medicine will welcome its inaugural medical school class at the Temple regional campus. This will mark Baylor's largest incoming medical school class.

THE BAYLOR EXPERIENCE CONTINUED

STUDENT WELLNESS SERVICES:

This team ensures students have access to resources to maintain good physical and mental health. Resources include discounts to the campus gym, access to Baylor clinic appointments and confidential counseling services both on campus and through WellConnect, a 24/7 crisis counseling hotline.

CAREER DEVELOPMENT

CENTER: The career development team works with students across the College to provide the necessary training, resources and connections to achieve professional goals and develop meaningful careers.

STUDENT SUCCESS SERVICES

To support your success, Baylor provides a wide range of services including review sessions, tutoring, services for students with disabilities, veteran affairs services and counseling. Students have access to a variety of resources, quiet places to study and rooms to meet in small groups.

STUDENT SENATE: The official representative body of all medical students provides an opportunity to engage with leadership and give input on many aspects of student services and student life.

STUDENT SERVICES COMMITTEE:

This student committee provides feedback to and works closely with College leadership to facilitate development of services to meet student needs.

INCLUSION AND EXCELLENCE COUNCIL:

Students and staff serve together on this council, which supports Baylor's institutional diversity and inclusion goals.

2021 ENTERING CLASS

7,698

NUMBER OF APPLICANTS

3.89

AVERAGE GPA

850

NUMBER OF APPLICANTS INTERVIEWED

517

AVERAGE MCAT

185

CLASS SIZE

YOUR TEACHERS

Your patients will be among your greatest teachers, and the reputation of our faculty and our clinical affiliates draws patients from around the world.

The Baylor faculty is composed of more than 1,600 full-time members and 2,000 part-time or voluntary faculty. As part of one of the nation's leading research institutions, our faculty pursues tomorrow's medicine through a wide range of research endeavors — all of which represent exceptional learning opportunities.

Every faculty member has the time, resources and support necessary to dedicate to teaching.

Residents and fellows also serve as impactful teachers. They receive dedicated training to develop and enhance their teaching skills through the Office of Graduate Medical Education.

The professors at Baylor are all leading minds in their respective fields and have a passion which permeates their lessons. Add this to the fact that classes are pass/fail and pro-collaboration and not competitive. It's clear to see why students enjoy learning.

ANA RIVERA, MEDICAL STUDENT AT BAYLOR



YOUR MENTORS



The Learning Community (LC) is a network of clinical faculty advisers for medical students, housed in specific Squads. Each Squad features student leadership and a support structure. The community fosters student development through peer-to-peer mentoring, wellness and social activities.

Through your LC advisor, you will receive individual academic and professional guidance through monthly small groups, as well as twice-yearly one-on-one sessions. These meetings will provide an opportunity to shape your individualized education plan and discuss personal and professional challenges and goals. Once you determine your desired specialty, your LC Advisor will help you identify specialty-specific mentors who can provide focused mentorship to help you progress toward your career goals.

YOUR FELLOW STUDENTS

You also will rely on your classmates as teachers, mentors and advisers, so the composition and culture of the student body are critical components of your education.

We believe that a diverse student body:

- Advances the skills of physicians to provide healthcare to diverse populations
- Improves outreach to the medically underserved
- Broadens the scope of medical research

We are committed to promoting equal opportunity for all who are interested in a medical career, including groups that are underrepresented in medicine regionally or nationally due to race, ethnicity, socioeconomic status, geographic location, unique personal experiences or other factors.



THE RESIDENCY MATCH

The next step after medical school is residency in a particular medical specialty. The National Resident Matching Program places fourth-year medical students into residency positions using a mathematical algorithm that matches applicants and programs to their preferred choices.

Despite the prospect of beginning residency in a pandemic, our students successfully matched into outstanding programs across the country.



I think Baylor's biggest strength is the community. Everyone is always looking to help one another: there's never a lack of study resources being shared; upperclassmen are constantly putting together study sessions and always willing to serve as mentors for classes below them. Even outside of school, there is never a lack of willingness to help someone affected by a flood, freeze or other difficult situation. I couldn't ask for better people to go through this journey with.



CAMERON GOFF, MEDICAL STUDENT AT BAYLOR



A LOOK AT WHERE OUR STUDENTS MATCH

Cleveland Clinic Foundation
Hospital of the University of Pennsylvania
Johns Hopkins Hospital
Madigan Army Medical Center
Massachusetts General Hospital
Mayo Clinic College of Medicine & Science
NYU Grossman School of Medicine

Rhode Island Hospital/Brown University
Stanford University Programs
Tulane University School of Medicine
UCLA Medical Center
University of Colorado School of Medicine
University of Texas Southwestern Medical School
Yale-New Haven Hospital

12 ANESTHESIOLOGY

2 CHILD NEUROLOGY

10 DERMATOLOGY

9 EMERGENCY MEDICINE

6 FAMILY MEDICINE

8 GENERAL SURGERY

27 INTERNAL MEDICINE

1 INTERVENTIONAL RADIOLOGY (INTEGRATED)

5 MEDICINE-PEDIATRICS

1 MEDICINE-PRELIMINARY

2 MEDICINE-PRIMARY

1 NEURODEVELOPMENTAL DISABILITIES

2 NEUROLOGICAL SURGERY

3 NEUROLOGY

5 OBSTETRICS/GYNECOLOGY

9 OPHTHALMOLOGY

5 ORTHOPEDIC SURGERY

4 OTOLARYNGOLOGY

3 PATHOLOGY

18 PEDIATRICS

2 PEDIATRICS-MEDICAL GENETICS

4 PHYSICAL MEDICINE & REHABILITATION

1 PLASTIC SURGERY (INTEGRATED)

11 PSYCHIATRY

1 RADIATION ONCOLOGY

6 RADIOLOGY-DIAGNOSTIC

4 SURGERY-PRELIMINARY

1 THORACIC SURGERY

2 TRANSITIONAL

1 UROLOGY

1 VASCULAR SURGERY

MATCH DAY 2022

163 GRADUATES MATCHED IN
31 SPECIALTIES



MATCHED
IN TEXAS,
INCLUDING

40

CONTINUING
THEIR TRAINING
AT BAYLOR

THE CITY OF HOUSTON

A great place to live, learn, work, play and raise a family

HOUSTON IS THE MOST DIVERSE LARGE METROPOLITAN AREA IN THE U.S.



Credit: Visit Houston (Julie Soefer)



Credit: Visit Houston



HOUSTON FACTS & FIGURES

1st

IN TOTAL PARK ACREAGE AMONG U.S. CITIES WITH MORE THAN ONE MILLION RESIDENTS

60

DEGREE GRANTING COLLEGES, UNIVERSITIES AND TECHNICAL SCHOOLS

2nd

LARGEST CONCENTRATION OF FORTUNE 1,000 COMPANIES IN THE COUNTRY

145

LANGUAGES SPOKEN

4th

LARGEST CITY IN U.S.: 2.3 MILLION RESIDENTS

500+

INSTITUTIONS DEVOTED TO PERFORMING AND VISUAL ARTS, HISTORY AND SCIENCE

4.4%

BELOW THE NATIONWIDE AVERAGE COST OF LIVING.

Source: City of Houston

ACTIVITIES AND ATTRACTIONS

- Professional, collegiate and recreational sports leagues
- Theatre, ballet, concerts, opera and museums
- Nightlife options around town
- Shopping galore
- 350 parks; 95 miles of nature, hiking and bike trails and three state parks nearby
- More than 10,000 restaurants representing 70 countries and U.S. regions
- Water recreation within a short drive (Galveston beaches, Clear Lake, Lake Conroe and Lake Livingston)

Since starting medical school, I am regularly reminded that not only am I a student but a member of the community. Baylor makes meaningful efforts to invest in the people of Houston. Whether it be through service-learning projects or education and healthcare outreach, there are endless opportunities to get involved. These experiences have made my time here that much more special.



KELVIN ZHOU, MEDICAL STUDENT AT BAYLOR

THE CITY OF TEMPLE

The convenience of a big city with small town hospitality

TEMPLE IS REGARDED AS ONE OF THE GREATEST PLACES TO LIVE AND WORK IN TEXAS.



Bird Creek Burger Co. in Temple



TEMPLE FACTS & FIGURES

78K+

POPULATION

34Y

MEDIAN AGE

6th

MOST AFFORDABLE PLACE TO LIVE IN THE U.S. AND THE COST OF LIVING IS 14.3% LOWER THAN THE NATIONAL AVERAGE

30%

BELOW THE NATIONAL AVERAGE HOUSING COST

Source: City of Temple and Census Bureau



ACTIVITIES AND ATTRACTIONS

- 45 public parks, a dog park, 25 miles of trails, water parks, golf courses and a skate park
- Cultural arts, theater and musical offerings

Close by

- Belton Lake, features hiking, camping, fishing, kayaking, mountain biking cycling, Miller Springs
- Stillhouse Hollow Lake

Baylor Scott & White Temple was an amazing institute for my medical education. BSW Temple is a big city hospital in a small city setting, which is truly unique and ideal. During my time there, I saw a diverse and unique pathology. The pathology ranged from common bread-and-butter medicine to rare cases. The fact that BSW Temple was in a small city allowed for a close familial feeling. Everyone, ranging from the patients to any healthcare worker, truly cared for each other and allowed for a positive environment in the hospital. Temple was a fantastic experience for me!



DR. NITIN AGRAWAL, RESIDENT AT BAYLOR

THE BAYLOR CLINICAL EXPERIENCE

At Baylor, you train in some of the country's best hospitals. The facilities in the Texas Medical Center and in Temple, as well as our opportunities for international rotations, represent a variety of patient populations, preparing you to succeed in any situation your career presents.

With no dominant ethnicity in Houston, the city's diversity is reflected in the patient populations at our clinical facilities. Rich exposure to patients and families from many cultures will prepare you to work anywhere in the world. Students have the opportunity to learn firsthand how health beliefs and practices are influenced by culture.



Baylor St. Luke's Medical Center is jointly owned by Baylor College of Medicine and CommonSpirit Health and is part of the CHI St. Luke's Health System. In addition to the current Texas Medical Center facility, an 850-bed hospital that offers a range of specialties, planning is currently underway for a new facility on the McNair Campus in the Texas Medical Center. Baylor St. Luke's is ranked nationally in three adult specialties and received a High Performing rating in five adult specialties and five procedures or conditions.*



Michael E. DeBakey Veterans Affairs Medical Center is one of the VA's largest hospitals, serving Harris County and 27 surrounding counties. It serves as the primary healthcare provider for almost 130,000 veterans in southeast Texas. Veterans from across the country are referred here for specialized diagnostic care, radiation therapy, surgery and medical treatment.



Harris Health System is the public healthcare system providing primary, specialty and hospital care to the residents of Harris County, the third most populous county in the U.S. Ben Taub Hospital, the central clinical care facility of Harris Health, is contiguous with the Baylor campus and serves as a teaching hospital for Baylor students. Ben Taub includes a Level I Trauma Center, an award-winning cardiac program and a Comprehensive Stroke Center. Medical students may also have rotations at Harris Health's Thomas Street Health Center, the nation's first HIV/AIDS treatment facility.



Baylor Scott & White Health (pictured at left) Baylor Scott & White Medical Center – Temple is a 640-bed multispecialty teaching and research hospital located in Temple, Texas. The integrated healthcare system of hospitals, clinics and care centers serves patients in a number of areas, including cancer care, transplantation, neurosciences, orthopedics, digestive diseases, surgical services, heart and vascular care, urogynecology and women's health. Baylor Scott & White – Temple was ranked second in the nation as a major teaching hospital by *Fortune* magazine and IBM Watson Health.



Baylor Scott & White McLane Children's (pictured at right) is staffed by specially trained pediatric doctors and surgeons in 40 pediatric specialties, nurses and support staff. With advanced technology, equipment and accommodations designed especially for children, the hospital is committed to assuring the best possible outcome for each child.

Your clinical experiences are critical to getting the training and, ultimately, the residency and career you want. Your goal is to learn all you can. To achieve that, you need exposure to many patients.



Texas Children's Hospital is the primary pediatric training site for Baylor students. The largest pediatric hospital in the nation, Texas Children's is ranked in all 10 subspecialties and also is also ranked the best in Texas and the fourth best pediatric hospital in the nation.* The Texas Children's Pavilion for Women is a state-of-the-art center for obstetrics and gynecology.



TIRR Memorial Hermann is ranked third among the nation's rehabilitation facilities.* TIRR focuses on providing care to individuals who have experienced catastrophic injuries or illnesses. TIRR is home to the Baylor College of Medicine/ University of Texas Health Science Center – Houston Physical Medicine and Rehabilitation Alliance.



MD Anderson Cancer Center is one of the world's most respected centers devoted exclusively to cancer patient care, research, education and prevention. MD Anderson ranked among the nation's top two cancer hospitals.*



The Menninger Clinic partnered with Baylor and Houston Methodist in 2002. Menninger is considered one of the top centers for psychiatric care in the world and ranks in the top five best psychiatric hospitals.*



The Children's Hospital of San Antonio is the first freestanding children's hospital in San Antonio. Baylor College of Medicine finalized an agreement with the hospital in 2013 to recruit, employ and oversee physicians there. This affiliation provides students with additional elective opportunities outside of Houston.



Central Texas Veterans Health Care System serves more than 252,000 veterans, covers 35,000 square miles and 39 counties. The Olin E. Teague Veterans' Medical Center in Temple is a tertiary care facility, as well as a teaching medical center, providing a full range of patient care services.

*Source: *U.S. News & World Report*

THE BAYLOR CLINICAL EXPERIENCE CONTINUED

Students also have the opportunity to complete clinical rotations at Baylor College of Medicine, in private practices and in community health centers around the city.



The students at Baylor truly make the school. The student population is incredible, being consistently supportive and collaborative throughout my training. They have continued to challenge my perspective and pushed me to be the best version of myself. I have met some of the most amazing people, had some of the best experiences, and developed lifelong relationships that I will cherish forever.

NEAL MODY-BAILEY, MEDICAL STUDENT AT BAYLOR

Baylor College of Medicine is the academic center around which the Texas Medical Center, the world’s largest health center, evolved.

TEXAS MEDICAL CENTER

Baylor Scott & White Health is the largest not-for-profit health system in Texas.

BAYLOR SCOTT & WHITE HEALTH SYSTEM

9,200	PATIENT BEDS
8th	LARGEST BUSINESS DISTRICT IN THE U.S.
10M	PATIENT VISITS PER YEAR
180K	SURGERIES ANNUALLY
\$3B	IN CONSTRUCTION PROJECTS IN PROGRESS
106K	EMPLOYEES

51	HOSPITALS
78M+	PATIENT ENCOUNTERS ANNUALLY
49K	EMPLOYEES
7K	PHYSICIANS
40	COUNTIES
\$11.7B	TOTAL OPERATING REVENUE

STUDENT LIFE



YOU WILL BE ABLE TO HAVE A LIFE OUTSIDE OF STUDYING DURING MEDICAL SCHOOL.

The College sponsors many activities for students that range from formal ceremonies and award programs to social and community service events. The College also has an athletic facility and intramural leagues.



All students are assigned to a squad at the beginning of their first year and they participate in activities, including social and community service opportunities. Squads foster connections between students and contribute to Baylor's mission of service.

One tip I got on the application trail is that you not only need to enjoy your school but also its surroundings. Sometimes you need to be able to escape medicine and just enjoy life, and there is definitely always something to do in Houston.



SONIA GOMEZ PARRA
M.D./PH.D. STUDENT

SPECIALIZED PATHWAYS

Baylor College of Medicine has developed specialized pathways to help you explore your interests and customize your education. Various pathways are available to students. As curriculum changes are ongoing, however, all curricular elements may not be available at both campuses.



MEDICAL SCHOOL RESEARCH

This is a five-year program encompassing four years of the traditional M.D. training and one year of intensive research training with a Baylor faculty member. A tuition scholarship and stipend are provided to all accepted participants.

GLOBAL HEALTH

In partnership with the Baylor College of Medicine National School of Tropical Medicine, this pathway includes a one-month clinical elective abroad. Graduates acquire sufficient class hours and knowledge level to sit for the examination leading to the Certificate of Knowledge in Clinical Tropical Medicine and Traveler's Health, sponsored by the American Society of Tropical Medicine and Hygiene.

CARE OF THE UNDERSERVED

Curriculum is organized across all four years to provide students with the specific knowledge, skills and attitudes they need to care for patients from historically underserved communities.

HEALTHCARE POLICY AND MANAGEMENT

Throughout the four-year curriculum, this pathway provides a foundation in the fundamental principles of business and management.

MEDICAL ETHICS

Students receive in-depth exposure to bioethics and its clinical applications, culminating in a scholarly project and a Certificate in Biomedical Ethics.

SPACE MEDICINE

In this unique pathway, students complete four electives, including a research month. Faculty members are drawn from the Baylor College of Medicine Center for Space Medicine, Johnson Space Center and the Translational Research Institute for Space Health (TRISH).

GENETICS

Students have experience in didactic genetics courses, interact with patients and families in educational and service settings, train in both pediatric and adult genetics, and learn about the laboratory aspects of genetics testing, genomics of complex disorders and personalized genetic medicine.

DUAL-DEGREE PROGRAMS

Baylor partners with outstanding institutions to allow our students to earn an additional degree while they are in medical school. All students accepted to the M.D./Ph.D. dual-degree program will be assigned to the Houston campus.

Information on dual-degree programs is available at www.bcm.edu/dual-degrees.



M.D./PH.D.

Partner Institutions: Baylor College of Medicine Graduate School of Biomedical Sciences, which is ranked among the top 10 percent of graduate schools in the biomedical sciences*.

M.D./M.B.A.

Partner Institution: Rice University, which is ranked among the top 25 business schools in the nation*.

M.D./M.P.H.

Partner Institution: The University of Texas School of Public Health, which is ranked among the top 25 schools of public health*.

M.D./J.D.

Partner Institution: University of Houston Law Center, which is ranked among the top 50 law schools*.



*Source: *U.S. News & World Report*



LEARN MORE

SCHOOL OF MEDICINE

www.bcm.edu/medschool

TEXAS MEDICAL CENTER

www.texasmedicalcenter.org

CITY OF HOUSTON

www.houstontx.gov

CITY OF TEMPLE

www.templetx.gov

APPLICATION SERVICES:

www.tmdsas.com/

www.aamc.org/students/applying/amcas/

MEDICAL COLLEGE ADMISSION TEST (MCAT)

<https://students-residents.aamc.org/applying-medical-school/taking-mcat-exam/>

GET IN TOUCH

OFFICE OF ADMISSIONS

admissions@bcm.edu ■ 713.798.4842

M.D./M.P.H. PROGRAM

mdmph@bcm.edu

M.D./PH.D. PROGRAM

mstp@bcm.edu ■ 1.877.540.MSTP (6787)

M.D./J.D. PROGRAM

lawadmissions@uh.edu

M.D./M.B.A. PROGRAM

admissions@bcm.edu

While every effort has been made to verify the accuracy of information in this publication, Baylor College of Medicine reserves the freedom to change without notice admission and degree requirements, curriculum, courses, teaching personnel, tuition, fees and any other information published herein. This publication is not to be regarded as a contract nor to create any obligation on the part of Baylor nor right in any party.

ACCREDITATION

Baylor College of Medicine is accredited by the Southern Association of Colleges and Schools Commission on Colleges (SACSCOC) to award masters and doctorate degrees. Questions about the accreditation of Baylor College of Medicine may be directed in writing to the Southern Association of Colleges and Schools Commission on Colleges at 1866 Southern Lane, Decatur, GA 30033-4097, by calling (404) 679-4500, or by using information available on SACSCOC's website (www.sacscoc.org).

Baylor College of Medicine is also accredited by the Liaison Committee on Medical Education (a joint committee representing the American Medical Association and the Association of American Medical Colleges).

Students may review all accreditation, state approval, and licensure documents upon request.

PUBLIC SAFETY

The Texas Medical Center Police/Security Department provides the medical center campus with security patrol. Baylor College of Medicine's Security Office is responsible for security within Baylor. In accordance with the Jeanne Clery Disclosure of Campus Policy and Campus Crime Statistics Act (Clery Act), Baylor issues an Annual Security Report that reflects campus crime statistics, policies, and safety information. All prospective students, faculty, or staff may view this report online at <https://www.bcm.edu/about-us/our-campus/safety-and-security> or by contacting a Baylor security administrator at 713.798.3000.

BAYLOR DIVERSITY AND INCLUSION POLICY

Baylor College of Medicine fosters diversity among its students, trainees, faculty and staff as a prerequisite to accomplishing our institutional mission, and setting standards for excellence in training healthcare providers and biomedical scientists, promoting scientific innovation, and providing patient-centered care.

Diversity, respect, and inclusiveness create an environment that is conducive to academic excellence, and strengthens our institution by increasing talent, encouraging creativity, and ensuring a broader perspective.

Diversity helps position Baylor to reduce disparities in health and healthcare access and to better address the needs of the community we serve.

Baylor is committed to recruiting and retaining outstanding students, trainees, faculty and staff from diverse backgrounds by providing a welcoming, supportive learning environment for all members of the Baylor community.

NOTICE OF NONDISCRIMINATION

Baylor College of Medicine is committed to a safe and supportive learning and working environment for its learners, faculty and staff. College policy prohibits discrimination on the basis of race, color, age, religion, gender, gender identity or expression, sexual orientation, national origin, veteran status, disability or genetic information. Harassment based on any of these classifications is a form of discrimination and also violates College policy (02.2.25, 02.2.26) and will not be tolerated. In some circumstances, such discriminatory harassment also may violate federal, state or local law.

Baylor
College of
Medicine

BCM.EDU