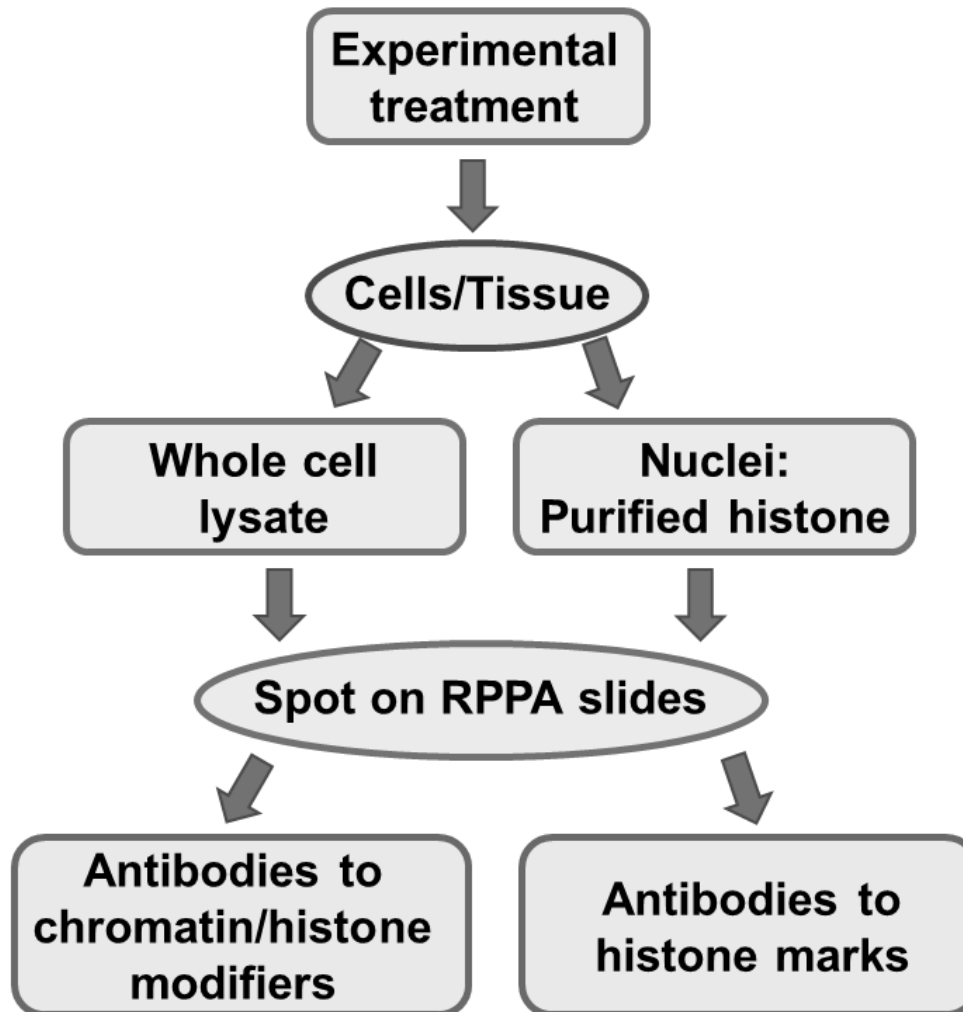


**High Throughput Epigenetic RPPA Of Histone Marks and Chromatin  
Modifying Proteins by Reverse Phase Protein Array (RPPA)  
Antibody-based Proteomics Core, Baylor College of Medicine  
shixiah@bcm.edu**



## Antibodies for histone marks

---

Antibody	Company
H3K4me1	ABCAM
H3K4me2	Abnova
H3K4me3	CST
H3K9me1	Abnova
H3K9me2	Active Motif
H3K9me3	Active Motif
H3K27me1	CST
H3K27me2	CST
H3K27me3	Active Motif
H3K36me1	CST
H3K36me2	CST
H3K36me3	Active Motif
H3K79me1	abclonal science
H3K79me2	abclonal science
H3K79me3	abclonal science
H3S10phos	ABCAM
H3S28phos	CST
H4K20me1	BIOSOURCE
H4K20me2	CST
H2AZac	CELL SIGNAL
H3K9ac	Active Motif
H3K14ac	CST
H3K18ac	Active Motif
H3K27ac	Active Motif
H3K36ac	CST
H3K56ac	CST
H4K5ac	Active Motif
H2A	CST
H2AZ	CST
H3	CST
H4	CST

---

## Antibodies for Chromatin/histone modifiers

Antibody	Company
HDAC1	CST
HDAC3	CST
HDAC4	CST
HDAC6	Santa Cruz
SirT6	CST
EP300	Santa Cruz
CREBBP	Santa Cruz
PCAF	CST
GCN5L2	CST
ASH2L	Bethyl Laboratories
SET1A	CST
G9a/EHMT2	CST
EZH2	CST
JARID1A	CST
JARID1C	abcam
JMJD2A	abcam
JMJD2B	CST
LSD1	CST
PHF2	CST
PHF8	Active Motif
p-HP1g (Ser83)	CST
DNMT1	CST
DNMT3A	CST
DNMT3B	CST

## Antibodies for Chromatin/histone modifiers (continued)

<b>Antibody</b>	<b>Company</b>
SMARCE1/BAF57	CST
SMARCC2/BAF170	CST
SMARCA1	CST
SMARCC1/BAF155	CST
SMARCA4/Brg1	CST
CHAF1A	CST
CTBP2	CST
FBXO11	abcam
FOXO1	CST
MED23	abcam
NCOA1	Santa Cruz
MED12	abcam
MED1	Bethyl Laboratories
SRC-1	BCM-Mab
SRC-3	BCM-Mab
PRKDC	Santa Cruz