



Baylor
College of
Medicine

SCHOOL OF
MEDICINE

ANNUAL REPORT 2024

PROMOTE WELLNESS
THROUGH SYSTEMIC
AND PROGRAMMATIC
ENHANCEMENTS

FOSTER PROFESSIONAL
AND RESPECTFUL
RELATIONSHIPS

PROVIDE TIMELY,
RELEVANT AND
COMPETENCY ORIENTED
ASSESSMENTS TO LEARNERS
TO PROMOTE LEARNING,
REFLECTION AND
ADVANCEMENT

PURSUE CONTINUOUS
QUALITY IMPROVEMENT
IN ACCREDITATION
READINESS

INCREASE SUPPORT
FOR AND EXPAND
PRODUCTIVITY IN
MEDICAL EDUCATION
RESEARCH AND
SCHOLARSHIPS

DEVELOP MEDICAL
EDUCATORS AND
ELEVATE EDUCATOR
COMPETENCY

DELIVER AN
INNOVATIVE LEARNER-
CENTERED CURRICULUM
THAT PREPARES WELL-
ROUNDED HEALTHCARE
PROFESSIONALS FOR
A LIFETIME OF
SERVICE

TABLE *of* CONTENTS

3 LETTER FROM
THE SENIOR DEAN

4 BAYLOR COLLEGE OF
MEDICINE - TEMPLE
REGIONAL CAMPUS

7 ADMISSIONS

9 DIVISION OF CONTINUING
PROFESSIONAL
DEVELOPMENT

12 CURRICULUM

13 DIVISION OF EVALUATION,
ASSESSMENT
AND EDUCATION
RESEARCH

14 GRADUATE MEDICAL
EDUCATION

19 M.D./PH.D. PROGRAM

20 STUDENT AFFAIRS



A LETTER *from the* SENIOR DEAN

DR. JENNIFER G. CHRISTNER

Schools of Medicine and Health Professions
Simulation Education Core
Anatomy Education Core
Willed Body Program

Dear colleagues, students, alumni and friends,

As we reflect on another successful academic year, I am filled with gratitude for the dedication, hard work and passion demonstrated by every member of Baylor College of Medicine's School of Medicine. This year has been one of growth, innovation and deepening commitment to Baylor's mission to provide exceptional education and service to the students and trainees who entrust us with their medical education.

Our campuses held many memorable events this year, such as the annual Medical Student Orientation at The Retreat at Artesian Lakes, where we welcomed a new cohort of students eager to embark on their journey to become compassionate, skilled and innovative healthcare professionals. The White Coat Ceremony, held both in Houston and Temple, was another highlight, as it symbolizes their transition into medicine. For our first-year students, this ceremony represents pride, commitment and responsibility, as they take their first steps toward becoming physicians. I celebrate the courage and determination of each student, as I know the white coat is not only a garment but a symbol of public trust in the healthcare profession.

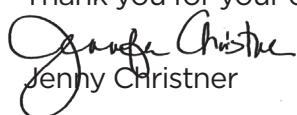
A commitment to serving our local communities is a core value of the institution. Through various community service initiatives, our students, faculty and staff have worked to provide healthcare to underserved populations. The Service-Learning Program, which includes innovative courses like the Narrative Medicine/Service Learning Course, encourages students to engage deeply with the human side of medicine, enhancing their understanding of patient stories and the broader social context of health and healthcare.

The School of Medicine's recruitment process continues to attract top talent. This year, we received 5,541 applications, from which we interviewed 1,125 candidates. Of those, we proudly welcomed 226 matriculants to our campuses in Houston and Temple. These students represent the future of healthcare, and we are excited to support them in their studies and training.

A new medical school curriculum, which focuses on integrating clinical experience with foundational science education, has been implemented with positive feedback given by students. This innovative approach enhances student engagement and better prepares them for the realities of practicing medicine in today's world.

As you peruse this annual report, take a moment to recognize the valuable accomplishments of our wonderful team and events from the past year. As we look forward, I remain confident in the strength of our community and the shared commitment to advancing the field of medicine. Together, we will continue to create an environment of excellence, compassion and innovation for the students who will lead us into the future of healthcare.

Thank you for your continued support and dedication to our mission.


Jennifer Christner

BAYLOR SCHOOL *of* MEDICINE TEMPLE REGIONAL CAMPUS

Baylor College of Medicine's School of Medicine Temple regional campus celebrated the completion of the first full academic year. Regional Dean Dr. Alejandro Arroliga, along with the associate deans, appreciate everyone who helped make this year so successful for our learners, faculty and staff.

MEDICAL STUDENT ORIENTATION

After the first few days of new student orientation on campus, the Temple MS1s traveled to The Retreat at Artesian Lakes to participate in additional team building activities with their classmates from the Houston campus.



WHITE COAT CEREMONY

The inaugural White Coat Ceremony for the BCM-Temple campus was held Aug. 11, 2023. Pictured below is the class of 2027 in their newly donned white coats.



CONNECTING WITH COMMUNITY

Dr. Greg Carter inaugurated Matthew Carter Service Day on the Temple Campus on Oct. 6, 2023. Dr. Alejandro Arroliga was the first speaker in the lectureship designed to encourage service as a legacy for all Baylor College of Medicine medical students. On Oct. 7, in partnership with the United Way of Central Texas, medical students, faculty and staff volunteered at five pre-selected nonprofit organizations in Temple for a day of community engagement.



SERVICE-LEARNING PROGRAM

In October 2023, the BCM Temple MS1s implemented their service-learning program. The goal of SLP is for students to choose a community partner site/social issue and engage in a balance of service, education and reflection activities throughout the year. Each student must volunteer a total of 21 hours and participate in a poster presentation at the SLP symposium in the spring, which was held in conjunction with the Cultural and Social Influences on Health Lecture Series in April 2024.



DONOR HONOR CEREMONY

The Donor Honor Ceremony is a celebration of the lives of those who donate their bodies after death to improve science and knowledge of future medical professionals. The ceremony was coordinated by first-year medical students, along with physician assistant and physical therapy students from the University of Mary Hardin-Baylor.



SACSCOC SITE VISIT

The Southern Association of Colleges and Schools Commission on Colleges (SACSCOC) Substantive Change site visit took place at the Temple campus in January 2024. The campus received favorable and positive feedback in the preliminary report with zero recommendations for change, pending board approval. The Site Team's final report for the Temple campus was approved by the SACSCOC board in June.



SQUADLYMPICS

The first BCMT Campus Squadlympics were held May 18, 2024, at Lions Park in Temple. Multiple events were held, including an obstacle course, relays and tug-of-war competitions. Students are pictured making the "T" sign, their chosen way of identifying their Temple campus.



WELCOME WEEKEND

Throughout Welcome Weekend in April 2024, 31 students from the Temple campus participated in socials and organized activities while leading campus tours for prospective students, their families and guests. Dr. Harry Papaconstantinou, chair of the Department of Surgery at Baylor Scott & White Medical Center Temple and Baylor College of Medicine alum ('95) and faculty member, served as the keynote speaker and reflected on the lessons he learned since his time as a student. Students and their families completed a tour of the campus and participated in an anatomy demonstration by Dr. Darryn Willoughby using the Anatomage table.



FACULTY APPOINTMENTS

By May 2024, more than 430 physicians and scientists from Baylor Scott & White Temple had been appointed to Baylor College of Medicine faculty. Pictured below are nearly 50 faculty members that attended the White Coat Ceremony for the Inaugural Temple class in August 2023.



GOLDEN APPLE TEACHING AWARDS

The Department of Faculty Affairs and Faculty Development honored three faculty members with Golden Apple Teaching Awards. The awards for Outstanding Clinical Faculty went to Dr. Jeffery Clark (right) and Dr. Luis Camarillo (not pictured). The award for Outstanding Basic Science Faculty went to Dr. Mostafa Belghasem (left). Dr. William Culp Jr. (center), associate dean of Faculty Affairs and Faculty Development, presented these awards in July 2024.



RENOVATIONS



After a nearly two-year demolition and renovation, the Central Texas Center for Anatomical Sciences and Education was previewed by faculty, staff and students in July 2024. The state-of-the-art facility provides exceptional natural light through windows that overlook Baylor Scott & White. With more than 13,000 sq. ft., the space includes 40 stainless steel donor tanks, activity viewing monitors, handwashing and eye washing stations, embalming room, refrigerated space capable of storing 100 cadaveric donors, as well as changing rooms and office and conference room space. The center will be used primarily by Temple students along with PA and DPT students from the University of Mary Hardin-Baylor and BSW GME program resident physicians for advanced medical education training activities.

STUDENT LEARNING COMMUNITY

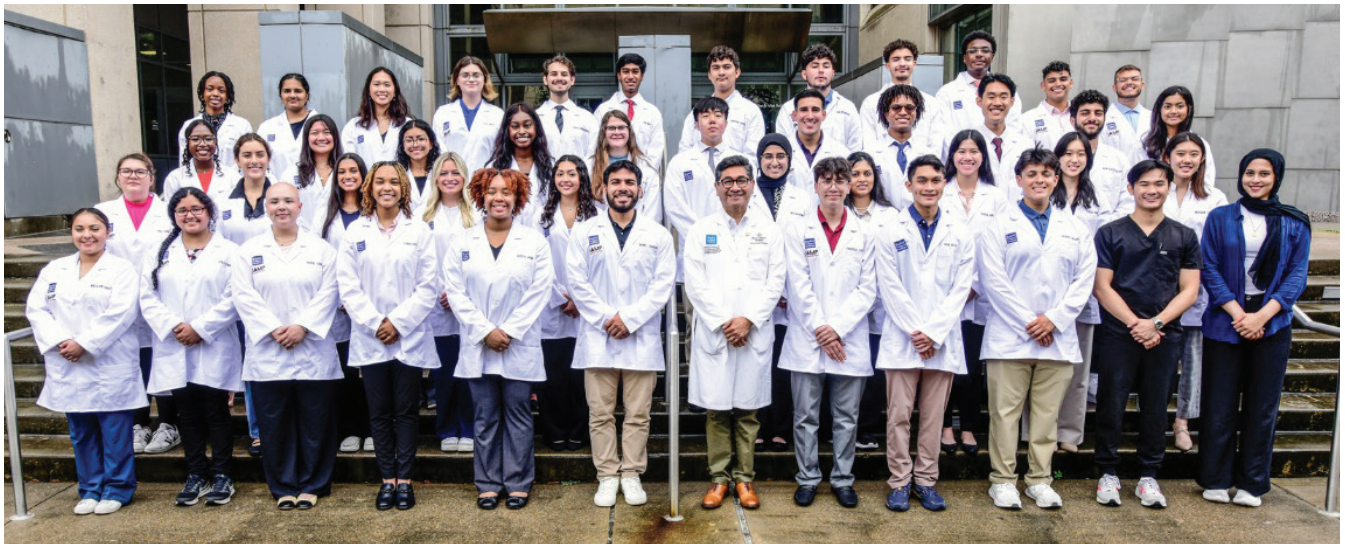
A welcome reception was held for the Class of 2028 MS1s along with an open house to unveil the new student learning community and squad space in the Medical Education Building. The new space includes squad rooms, office space, a kitchen and dining area, lockers, lounge space with a TV and ping pong/air hockey table, an equipped gym with two showers, respite rooms, lactation room, focus room, sound-reduced study rooms, study carrels and huddle rooms.



ADMISSIONS

PREMEDICAL SUMMER INSTITUTE

The Premedical Summer Institute (PSI) at Baylor provides promising students from diverse backgrounds with additional educational and practical experiences to enhance their competitiveness in the medical school admissions process. The PSI provides rigorous coursework in science and communications, as well as the opportunity to gain a greater understanding of medicine in the Texas Medical Center. PSI is a four-week summer program for undergraduate students who are part of the Joint Admission Medical Program (JAMP) and Baylor's Baccalaureate/M.D. Programs. The program is directed by the Office of Admissions and Office of Curriculum.



The Office of Admissions launched a new JAMP initiative to foster social capital among JAMP medical school scholars. The inaugural event took place Aug. 24, 2024, and featured in-person sessions that saw active participation from scholars based at both the Houston and Temple campuses. JAMP alumni, faculty and residents will serve as mentors at both campuses.



SCHOOL *of* MEDICINE

5,541

APPLICATIONS
RECEIVED

1.125

CANDIDATES
INTERVIEWED

CLASS *of* 2028

PROFILE & STATISTICS



226

MATRICULANTS



89%

TEXAS
RESIDENTS

186

HOUSTON

40

TEMPLE



3.9

MEAN
GPA



123

FEMALE



103

MALE



19%

UNDERREPRESENTED
IN MEDICINE



518

MEAN MCAT
SCORE

17

FIRST-GENERATION
UNDERGRADUATE

15%

SOCIOECONOMICALLY
DISADVANTAGED

56

FIRST-GENERATION
GRADUATE

170

FIRST-GENERATION
IN MEDICINE



DIVISION *of* CONTINUING PROFESSIONAL DEVELOPMENT

Baylor College of Medicine

Center for Collaborative and Interactive Technologies

DIVISION OF CONTINUING PROFESSIONAL DEVELOPMENT (DCPD)

DIVISION OF DIGITAL HEALTH INNOVATION (DDHI)

INSTITUTE FOR CONTINUING PROFESSIONAL DEVELOPMENT IN QUALITY IMPROVEMENT AND PATIENT SAFETY (I-QIPS)

DIVISION OF CONTINUING PROFESSIONAL DEVELOPMENT (DCPD)

ACTIVITY METRICS

562	108,384	3,797	60+
Educational Activities	Learners 87,190 PHYSICIANS 21,194 NON-PHYSICIANS	Hours of Instruction	Clinical and Professional Disciplines Covered

ACHIEVEMENTS

- Public launch of BCM Clinician Resources in collaboration with the Division of Digital Health Innovation (DDHI), yielded more than 640 enduring online materials available on-demand, of which over 600 are available publicly
- Point-of-Care CME integrated into the electronic health record
- Collaboration with I-QIPS team to increase outreach and expansion of Baylor’s Maintenance of Certification Program footprint
- Accreditation services support, not only for Baylor programming, but also with other partners including a large pediatric society and plenary care meetings
- Served in essential roles in grant- and contract-funded dissemination and implementation of evidence initiatives



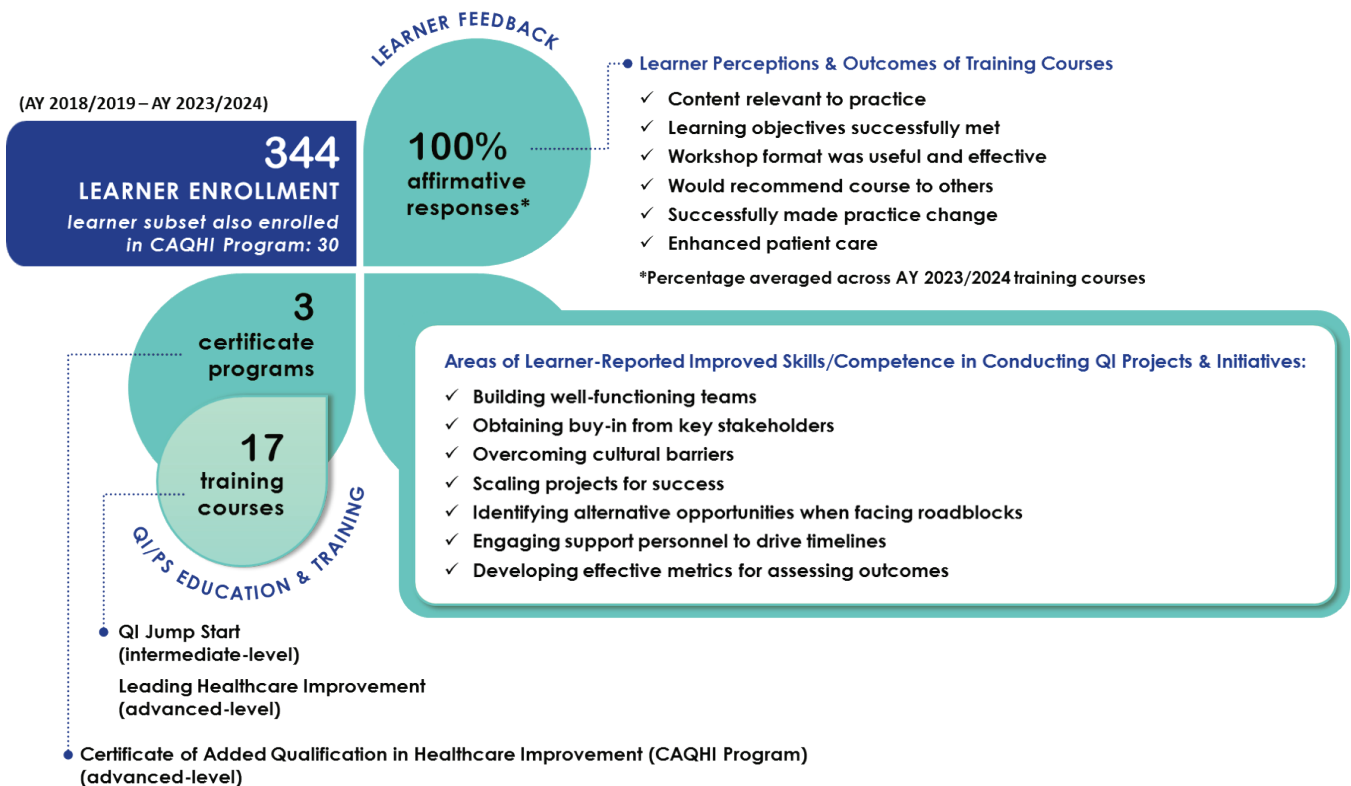
DIVISION OF DIGITAL HEALTH INNOVATION (DDHI)

The BCM Clinician Resources site has been launched, making it available to all Baylor faculty, as well as to members of the public. This launch includes access to more than 450 on-demand presentations with free CME credit available to faculty and modestly-priced credit available for non-Baylor physicians. This launch includes improved navigation, personalization and discoverability options to help physicians find relevant, useful and engaging continuing education. Materials have been provided for CommonSpirit physician access. Courses and Grand Rounds activities are updated throughout the year.

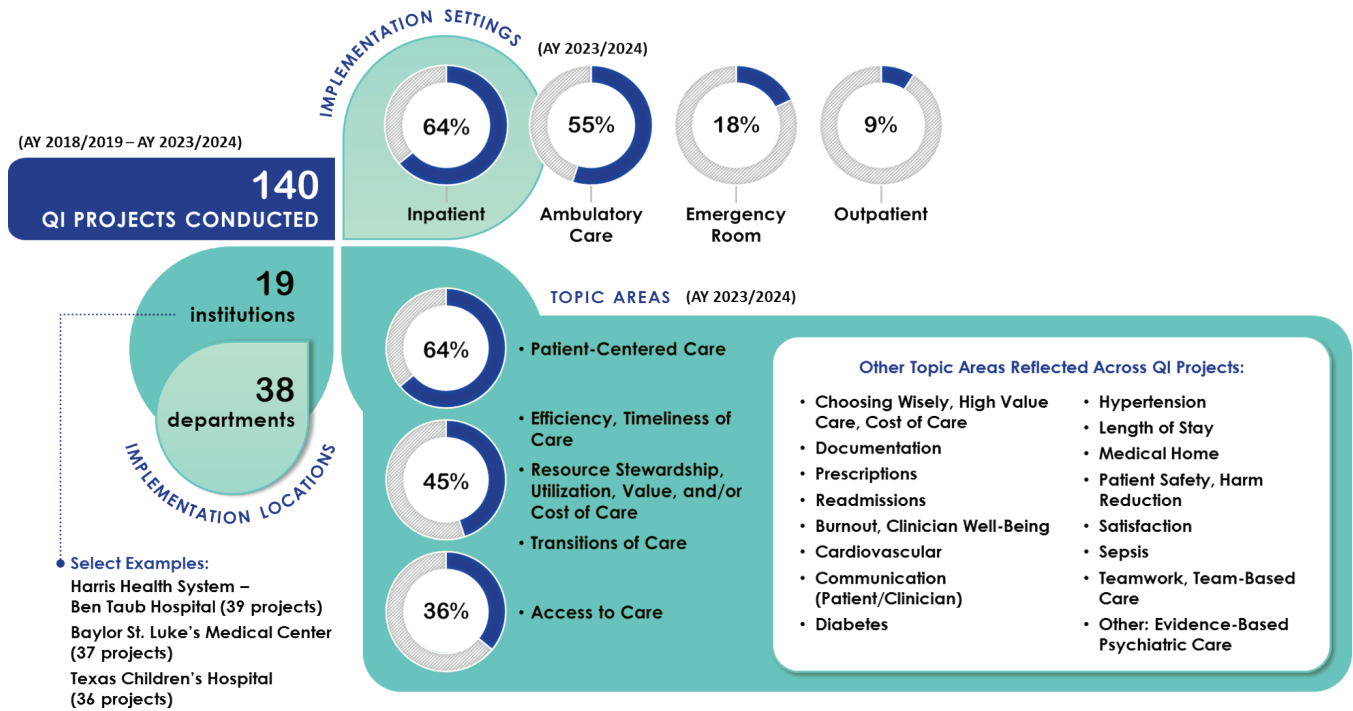
INSTITUTE FOR CONTINUING PROFESSIONAL DEVELOPMENT IN QUALITY IMPROVEMENT AND PATIENT SAFETY (I-QIPS)

ACTIVITY METRICS

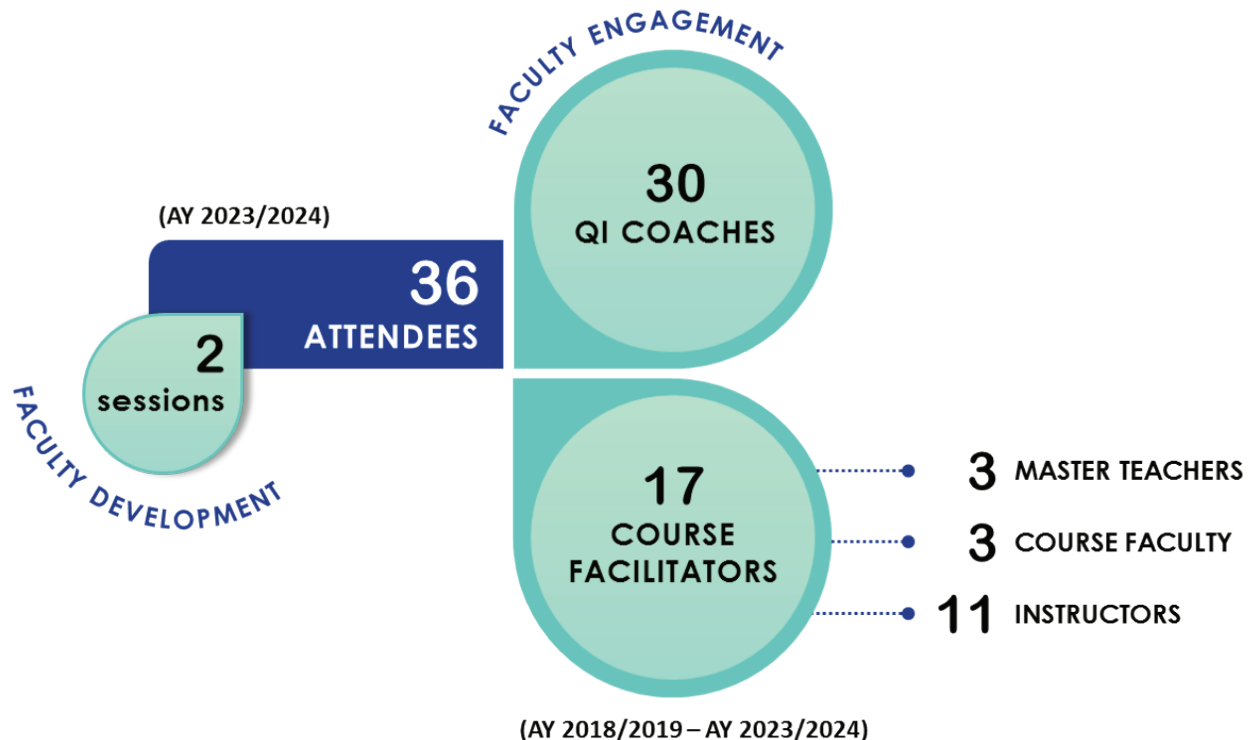
QI/PS Training, Learner Enrollment and Feedback



Learner-Conducted QI Projects, Implementation Locations and Settings, Topic Areas



Faculty Development and Engagement (QI Coaches/Course Facilitators)





CURRICULUM

STUDENT FEEDBACK

First year medical students enjoyed the new interactive integrated curriculum that started with two month long introductory courses, Transitions to Medicine, a professional formation and doctoring course, and Foundations of Medicine, a case based foundational sciences course.

The students began to learn physical examination and history taking skills in the clinics during their first week of medical school. The medical student's first year then continues with six integrated systems-based courses that incorporate large group interactive pedagogy and small group problem-based learning.

The new curriculum incorporates classroom learning with anatomy and histology lab, radiology/point of care ultrasound and physical examination in the clinic and simulation labs during a typical week. For example, students learn pulmonary physiology by working on pulmonary function testing cases with expert faculty. Next, they dissect the chest in an anatomy lab and review the lung cellular structure and function in the histology lab. Finally, students practice lung physical exam skills in a preceptor clinic.

Students enjoyed the emphasis on self-directed learning with frequent low stakes assessments instead of one large final exam at the end of the course. Feedback has been overwhelmingly positive.





DIVISION *of* EVALUATION, ASSESSMENT *and* EDUCATION RESEARCH

In late 2023, the Division of Evaluation, Assessment and Education Research (EAR) welcomed two new leaders to the team. Hugh Stoddard, M.Ed., Ph.D. is now associate dean for EAR, and Marjorie Westervelt, Ph.D., M.P.H., is assistant dean for EAR. Stoddard moved to Baylor from Emory University School of Medicine and prior to that, University of Nebraska College of Medicine. Westervelt came from The Carle Illinois College of Medicine and previously University of California – Davis. The two leaders bring a wealth of experience and ideas to build on the success of EAR by supporting innovative assessment in the new curriculum and program evaluation.

A vital task for the EAR team and colleagues throughout Baylor’s M.D. program is to advance the principles of the medical school curriculum by leveraging data management to support competency-based assessment. Providing learners with frequent, valid information about their progress and tailoring their learning experiences to match their educational trajectory demands rapid collection, analysis and distribution of assessment data.

A new committee, the Committee on Student Competency Attainment, is a primary user of the online data system to monitor advancement toward meeting the Core Competency Graduation Goals (CCGGs). In collaboration with Academic Information Technologies (AIT), systems are being designed to gather authentic assessment data that will inform instructors and learners about student performance. EAR personnel, led by Westervelt, have devised a process to use the Qualtrics online platform to collect student clinical assessment data. EAR is now teaming with AIT to produce data displays and analyses that will enhance programmatic assessment in the new curriculum.



DR. HUGH STODDARD
ASSOCIATE DEAN, EAR



DR. MARJORIE WESTERVELT
ASSISTANT DEAN, EAR

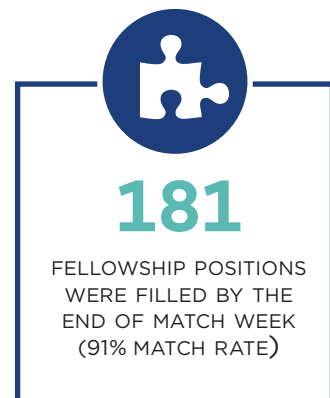
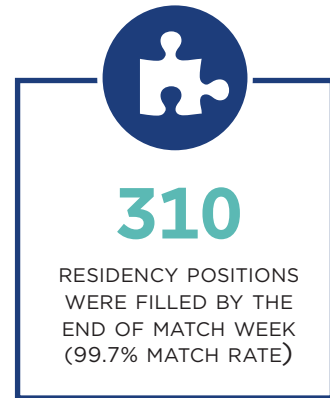
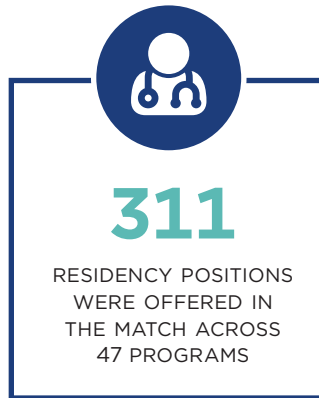
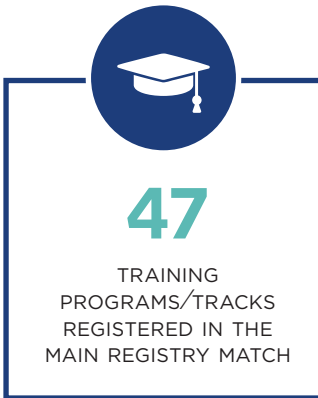


GRADUATE MEDICAL EDUCATION

RECRUITMENT

In 2024, Baylor had another successful year of matching trainees into residency and fellowship programs.

NATIONAL RESIDENCY MATCH PROGRAM 2023-'24



GME LEADERSHIP EXPANSION

In June 2024, Dr. Sara Andrabi's role was expanded from faculty adviser to the Housestaff Safety and Quality Council to the new GME director of quality and safety. She will maintain robust collaboration between the College and its hospital affiliates, focusing on quality, patient safety and CLER-related initiatives.

Dr. Bani Ratan's role as chair of the Resident as Teacher Committee was expanded to a director-level position in GME. She will work on special projects with GME leadership, including the creation of an Academy of Resident Educators, program director professional development and institutional initiatives around interprofessional education.

In 2024, a national search was conducted for an assistant dean for evaluation and assessment. This recruitment was crucial in refining GME assessment processes. Dr. Brent Stansfield was appointed to this position, where he will be responsible for enhancing and improving assessment processes at the institutional, program and trainee levels.



DR. SARA ANDRABI
GME DIRECTOR OF QUALITY AND SAFETY



DR. BANI RATAN
PROGRAM DIRECTOR



DR. BRENT STANSFIELD
ASSISTANT DEAN, EAR

ACGME ASSESSMENT COURSE

The Office of Graduate Medical Education sponsored six program directors and associate program directors to attend the ACGME Assessment Course in May 2024. The course was incredibly enlightening, providing a comprehensive overview of outcomes-based education in graduate medical education. The course emphasized the principles of effective assessment.

ACGME OVERSIGHT OF “NON-STANDARD TRAINING” PROGRAMS

Non-standard training programs provide clinical training in advanced subspecialties for which there is no ACGME accreditation or American Board of Medical Specialties member board certification. At Baylor, these programs are accredited by the Texas

Medical Board rather than the ACGME. Due to a recent national change, the ACGME now requires sponsoring institutions to apply for recognition to provide clinical training for J-1 visa holders in these programs. In AY '23, GME successfully applied for recognition by the ACGME and was among the first 18 institutions in the nation to receive the recognition. As of AY '24, approval was secured for 32 out of 74 non-ACGME programs that wish to train graduates who need J-1 visas.



As pioneers in this new process, Baylor collaborated with Johns Hopkins University and the University of Washington to design best practices for central oversight of these programs. Dr. Teri Turner and Caroline Hubbard presented at the ACGME annual conference in Orlando in February 2024.

ACGME ACCREDITATION

The Office of Graduate Medical Education successfully guided the initial accreditation application for a new ACGME program in Forensic Psychiatry in April 2024. The program secured grant funding from the state to fully support fellowship positions. The Texas Medical Board approved a new Endocrine Surgery Fellowship Program. GME provided guidance to Interventional Radiology and Cardiovascular Genetics on applications to the ACGME and the Texas Medical Board, both of which are progressing well.

Multiple site visits by the ACGME for Neurocritical Care, Pediatric Cardiovascular Anesthesiology, Thoracic Surgery – Integrated, Neurology and Pediatric Sports Medicine were conducted. These visits included initial accreditation, a new ACGME process of random sampling and data-driven reviews.

ACGME CLINICAL LEARNING REVIEW (CLER)

In December 2023 and January 2024, GME was tasked with organizing a formal in-person ACGME CLER visit to Ben Taub Hospital. The key pathways reviewed during a visit are patient safety, health care quality, teaming, supervision, well-being and professionalism. The logistics involved a team of four ACGME site visitors who were on site for three days. Their activities included:

- Small group meetings: Engaging with Harris Health and Baylor senior leadership, quality and safety leaders and representatives responsible for teaming and well-being
- Large group meetings: Meeting with residents, fellows, program directors and faculty.

- Walking Rounds: Conducting rounds at six different time slots, where they interacted with nurses, technicians, residents, and faculty in various units, ICUs, and outpatient clinics.

THANK A RESIDENT DAY

The Office of Graduate Medical Education and Alumni Affairs recognized the tireless efforts and positive impact of trainees in clinical environments.

On Feb. 23, 2024, more than 400 residents and fellows gathered at the Michael E. DeBakey VA Medical Center and Ben Taub Hospital for Resident Appreciation Day. In partnership with Harris Health, residents and fellows were given brunch and free Baylor promotional merchandise. Texas Children's Hospital supported a week of activities, including multiple breakfast and lunch offerings, a raffle, mindfulness activities and a talent show. Baylor St. Luke's Medical Center offered free massages, lunch and promotional swag to support the day.



GME RESIDENT COUNCIL

The Graduate Medical Education Resident Council hosted a record number of social events, for both residents and fellows, with the main goals of improving well-being and interprofessional relationships. Highlights included welcome events for two large incoming classes of residents in June 2024 and a dinner organized by the GME deans for the Resident Council.

The Resident Council also collaborated with the Baylor's Alumni Association to hold a resident and fellow appreciation event at Ben Taub Hospital and the DeBakey VA Medical Center. Council members played a vital role in advocating for their peers through various initiatives across the medical center by being involved in several key GME accreditation committees and the CLER site visit at Ben Taub Hospital.

HOUSESTAFF SAFETY AND QUALITY COUNCIL

The Housestaff Safety and Quality Council's (HSQC) efforts were pivotal in achieving success during the ACGME CLER site visit, which highlighted the collaboration between Harris Health and Baylor's leadership, residents, fellows and faculty.

A major goal this year was increasing accessibility to quality improvement and patient safety (QI/PS) resources for members of the GME community. To this end, they significantly enhanced their SharePoint site, transforming it into a comprehensive resource hub.

GOLD HUMANISM AWARDS

Baylor's Gold Humanism Resident/Fellow Chapter initiated an inaugural service grant this past academic year to support community efforts of students. This year's \$500 grant was awarded to M.D./Ph.D student Daniel Brock, who used the funding to support eye exams and screenings at Open Gate Homeless Ministries and Casa Maria Medical Clinic. The free screenings and clinics provided by the volunteer team enabled many patients to improve their reading abilities, and in some cases, restored their ability to read. They helped diagnose various eye conditions, including glaucoma, diabetic retinopathy, cataracts, dry eye and high myopia.



M.D./PH.D. PROGRAM

The M.D./Ph.D. Program celebrated its 47th year and continues to train the next generation of physician-scientist leaders who will bridge the gap between research and medicine.

Incoming Class Size	13	
Total Program Enrollment	106	
Publications	72	PAPERS PUBLISHED BY M.D./PH.D. STUDENTS, WITH 35 AS FIRST AUTHOR
Competitive Fellowships	7	NIH INDIVIDUAL FELLOWSHIPS AWARDED
Ph.D. Degrees Conferred	14	
M.D. (M.D./Ph.D.) Degrees Conferred	7	

Residency Match

- Harvard (Pathology)
- Johns Hopkins (Pathology)
- MD Anderson (Radiation Oncology)
- University of Miami (Dermatology)
- University of Michigan (Pediatric Neurology)
- Yale School of Medicine (Ophthalmology)

NEW ASSOCIATE DIRECTOR

In September 2023, the M.D./Ph.D. program welcomed new associate Director, Dr. Anita Chary, assistant professor of emergency medicine and health services research. She works alongside co-director Dr. Benjamin Frankfort to guide students during the medical school phase of training. Chary developed and implemented a *Transition to Clinic Refresher Experience*, an activity designed to support M.D./Ph.D. students as they reenter the clinical setting after completing their Ph.D.



DR. ANITA CHARY
ASSOCIATE PROFESSOR



STUDENT AFFAIRS

The Office of Student Affairs supports all medical students through outreach, counseling, curricular elements and milestone events including the annual White Coat Ceremonies, Match Day and Commencement.. OSA fosters a sense of belonging with offerings from Learning Community (LC) and DISCO.



DISCO

The School of Medicine's Integrated Academic Support Program (DISCO; Discovery, Integration, Success, Community, and Outreach) has successfully completed its second year of operation. Under the direction of director Dr. Steve Caloudas, DISCO programming has continued to help students through individual student advising, academic skills workshops and a peer tutoring program.

DISCO hosted 23 incoming MS1 students in the second annual Pre-Matriculation Program in July. The Pre-Matriculation Program gives students an early introduction to medical school and strategies for success. The program also aims to build community and connect students with institutional resources and support.

WORKSHOPS

- First-Year Academic Skills Series (Study Strategies and Time Management, Using Your Resources Effectively)
- Mid-Point Review Sessions
- Preparing for CBSE
- CBSE Check-In
- Preparing for Clerkships
- NBME Subject Exam Check-In
- Deans' Hour: Step 1
- "Medical Student's Guide to Academic Anxiety" Presentation

LEARNING COMMUNITY

In 2023-'24, Learning Community supported students through mentoring, social events and curriculum. This year, Baylor hosted the Learning Community Institute International Meeting. Dr. Connie Tran served as program chair and Dr. Eric Lee was abstract lead with several other faculty members serving on the planning committee. Melissa Chavarrilla served as onsite coordinator, ensuring all logistics were handled efficiently. Both Temple and Houston Advisers attended the meeting, and several students made presentations.

Learning Community has expanded with Drs. Jessica Drigalla, Michael McNeal, Alfredo Vazquez, Chitra Hamilton and Noah Stratton as Learning Community Advisers for the Temple Campus.

NARRATIVE MEDICINE/SERVICE LEARNING COURSE

The Narrative Medicine/Service Learning Course rounds out each Surgery Core Clerkship. Small groups of students engage in service learning at one of four community partnership sites. This course focuses on educating students about the social determinants of health and increasing empathetic communication in a hands-on way. Service Learning Sites include two affiliated middle schools Baylor College of Medicine Biotech Academy at Rusk and Baylor College of Medicine Academy at Ryan,, a community farm established by refugees called Shamba Ya Amani and a cultural exchange program, TERJA.



SERVICE LEARNING PROGRAM

The goal of the Serving Learning Program is to allow students to engage in a balance of service, education and reflection activities throughout the academic year. Participation is voluntary, and students who participate earn the Dean's Distinction in Service Learning designation on the Dean's Letter for residency applications. This program is open to all medical students and participation is allowed across multiple years.



DEANS HOURS

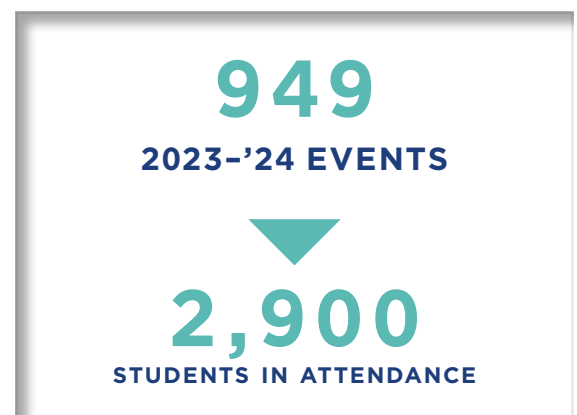
The deans of the Office of Student Affairs hosted seven informational sessions each semester, which catered to the needs of students in each class. Pertinent information is shared in an interactive space to prepare students for important milestones. Following each session, students are invited to fill out an evaluation form to provide feedback and ask questions. Deans Hours are recorded and posted to Blackboard along with any relevant materials to serve as a resource for all medical students.

SESSIONS

- Away rotations
- MS1-MS3 orientations
- Career day
- Pathways and dual degrees
- Dealing with mistreatment
- Preparing for CBSE
- Residency planning
- Studying for USMLE Step 1 and 2
- Interviewing for residency

STUDENT ORGANIZATIONS

The Office of Student Affairs supports the Student Senate and SOM Student Organizations. Student organization categories include Community and Advocacy, Identity and Affinity, Student Life and Specialty-Specific Interest groups.



MATCH DAY 2024

167 GRADUATES
MATCHED



65
PRIMARY CARE
SPECIALTIES

45
CONTINUING
THEIR TRAINING
AT BAYLOR

Baylor
College of
Medicine

78
MATCHED
IN TEXAS



- 14** ANESTHESIOLOGY
- 3** CHILD NEUROLOGY
- 6** DERMATOLOGY
- 6** EMERGENCY MEDICINE
- 10** FAMILY MEDICINE
- 6** GENERAL SURGERY
- 18** INTERNAL MEDICINE
- 4** MEDICINE-PEDIATRICS
- 3** MEDICINE-PRELIMINARY
- 1** MEDICINE-PSYCHIATRY
- 1** NEUROSURGERY
- 6** NEUROLOGY
- 5** OBSTETRICS/GYNECOLOGY
- 5** OPHTHALMOLOGY
- 12** ORTHOPEDIC SURGERY
- 4** OTOLARYNGOLOGY
- 4** PATHOLOGY
- 19** PEDIATRICS
- 1** PHYSICAL MEDICINE & REHABILITATION
- 2** PLASTIC SURGERY
- 14** PSYCHIATRY
- 2** RADIATION ONCOLOGY
- 12** RADIOLOGY-DIAGNOSTIC
- 4** SURGERY-PRELIMINARY
- 3** UROLOGY





SCHOOL OF
MEDICINE

BCM.EDU