



# Center for Research, Innovation and Scholarship (CRIS) in Medical Education

## Texas Children's Hospital

### **Mission**

Foster opportunities for educators (faculty and trainees) to engage with the larger medical education community through diverse categories of scholarship

### **Goals**

1. Create collaborative communities of educators and educational scholars
2. Facilitate individual educators' scholarly pursuits in medical education
3. Promote dissemination of scholarship in medical education

# Leadership

---

## **Satid Thammasitboon, MD, MHPE**

CRIS Director

Co-Director, Faculty College program

is versed in quantitative and mixed methods research, curriculum development, assessment instrument development, evidence synthesis, innovations in education. His areas of interest include critical thinking, mentoring, scholarship and professional development. He has broad experience in graduate medical education and currently serves as the Executive Director for the Medical Education Units for Research and Scholarship, Chair of Resident Scholarship Program in the Department of Pediatrics, Co-director of the BEME International Collaborating Center and Advisory Committee for the Global Health Scholarship Community of Practice.

## **Teri Turner, MD, MPH, MEd**

CRIS Founding Director

Vice Chair for Education

is internationally known education leader and researcher. Her areas of interest include research in graduate medical education, particularly in instructional methods and competency assessment and in faculty development with respect to career development of clinician educators.

## **Geeta Singhal, MD, MEd**

Associate Vice Chair for Education

is an experienced faculty developer. Her areas of interest include faculty development, education portfolios and professional development. She is also a pediatric hospitalist, and has interests in patient safety related to diagnostic errors, family centered rounding and faculty development.

Established in 2012, the Center for Research, Innovation and Scholarship (CRIS) is one of the first medical education centers in the nation in a free-standing children's hospital.

# CRIS Faculty

---

## **Anne Gill, DrPH, MS, RN**

Norton Rose Fulbright Expert/Coach  
Assistant Dean, Interprofessional Education  
is an educator with experience in undergraduate and graduate medical education and faculty development. She is versed in quantitative and qualitative research methods and primarily interested in professionalism, critical reflection and patient safety.

## **Audrea Burns, PhD**

Associate Director, Physician-Scientist Program  
Co-Director, Faculty College Program  
Co-Director, National Pediatrician-Scientist Collaborative Workgroup  
is an education scholar and faculty developer. Her areas of interest include professional identity formation, curriculum development and qualitative research.

## **Jennifer Rama, MD, MEd**

Director, Pediatric Pulmonary Medicine Fellowship Program  
Director, Pediatric Fellows College  
is an education scholar. Her areas of interest include program evaluation, curriculum development and appreciative inquiry.

## **Betty (Lee) Ligon, PhD, MA, MA, MAR**

Senior Medical Writer  
Director, CRIS Publisher  
is a former English professor and is now an editor in the department of pediatrics and an ordained priest in the Anglican Church. She supports faculty by editing manuscripts and grant proposals and teaching medical and scholarly writing.

## **Shelley Kumar, MS, MSc**

Senior Statistician  
Is an experienced statistician in health professions education. Her areas of interest include instrument development and statistical model development.

CRIS posits that educators or communities of educators, facilitated or supported by CRIS, would be equipped to engage with the larger medical education community at a regional, national and international level.

# CRIS Faculty

---

## **Brian Rissmiller, MD**

Associate Director, Pediatric Residency Program  
Associate Director, Pediatric Critical Care Fellowship program

CRIS Director, Critical Thinking Lab

is an education scholar and faculty developer. His areas of interest include critical thinking, assessment and educational design research

## **Diane Nguyen, PharmD**

Director, Global Programs, Baylor College of Medicine  
International Pediatric AIDS Initiative (BIPAI)

Director, Global Health Scholarship Community of Practice Program

is an education scholar and faculty developer. Her areas of interest include faculty development and capacity building.

## **Jennifer Benjamin, MD, MS**

Deputy Director, Faculty College Program  
CRIS Director of Learning Technology

is an education scholar. Her areas of interest includes technology enhanced learning and social media-based scholarship

## **Lindsay Cameron, MD**

Associate Director, Pediatric Infectious Disease Fellowship Program

Deputy-Director, Faculty College program  
CRIS Director of Digital Scholarship

is an education scholar. Her areas of interest include digital scholarship, continuing professional development

## **Adam Cohen, MD, MEd**

Associate Director, Pediatric Hospital Medicine Fellowship Program

is an education scholar. His areas of interest include curriculum development, programmatic assessment and critical thinking

CRIS posits that educators, scholars and their respective communities should leverage their interest and strengths to engage in various forms of scholarship in health professions education—Discovery, Integration, Teaching and Application

# CRIS Faculty

---

## **Remijio (Remy) Elizondo**

Program Management Associate

## **FACULTY IN RESIDENCE**

### **Mellisa Carbajal, MD**

CRIS Faculty in Residence

Director, Neonatology Fellowship Program Director

### **Moushumi Sur, MD**

CRIS Faculty in Residence

Coach, Clinician and Teaching Excellence Awards

## **ADJUNCT FACULTY**

### **Partha Krishnamurthy, PhD, MBA**

is a professor of marketing at the C.T. Bauer College of Business, University of Houston and an adjunct assistant professor in the department of pediatrics. He is versed in psychology of decision-making, consumer/patient perspective, and interventions that influence thoughts, feelings and behavior. He offers expertise in experimental research and analysis of large data sets including electronic medical records.

### **Bob Lynch, MEd, MS, MFA**

is a professor and a certified master tutor who coaches writing for publication and presentation. A longtime professor of English and journalism at Lone Star College, he previously shared in a Pulitzer Prize awarded to staff at the Los Angeles Times.

We are committed to engaging with faculty, trainees and Texas Children's Hospital leadership with the educational issues that matter to them.

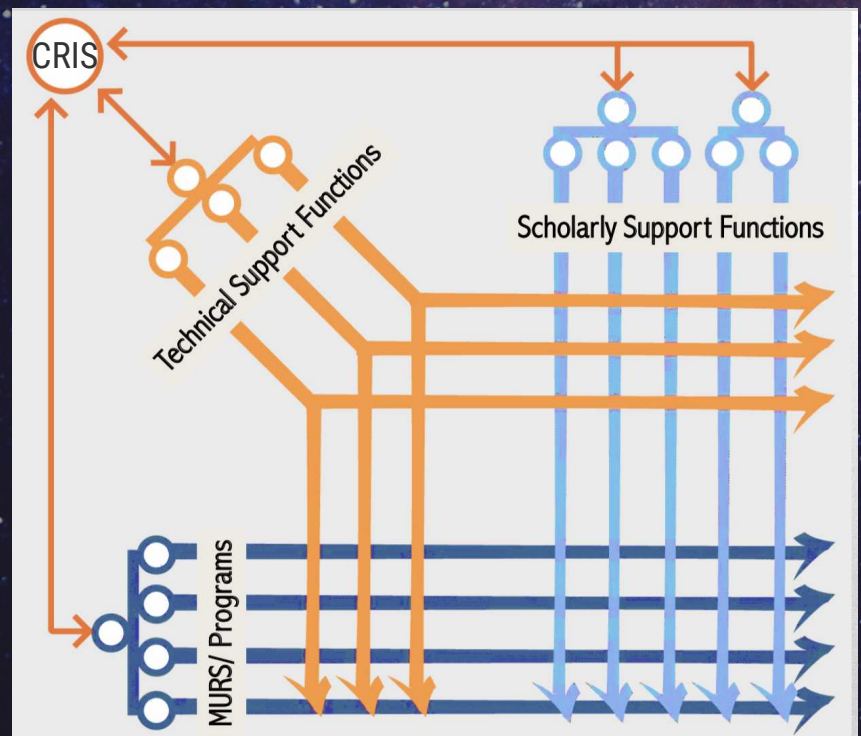
# CRIS 3-D Matrix

Health professions education unfolds in increasingly complex healthcare environments. This milieu often leads to “wicked problems” – issues that are difficult or impossible to solve because of incomplete, contradictory, and/or changing requirements that are often hard to recognize. We at CRIS use a 3-D Matrix Model to create the distributed shape shifting organization that fosters self-organized, cooperative networks of education scholars as the complexity-sensitive approach to addressing wicked problems in health professions education.

Biostatistics  
Clinical Teacher Development  
Education Scholar Development  
Grant Writing  
Learning Management System  
Program Administration  
Publishing House

Assessment & Evaluation  
Design Thinking/Research  
Instruction Technology  
Psychometric Studies  
Qualitative Research  
Research Methodology  
Writing and Rhetoric

Evidence Academy  
Bedside Ultrasound  
Education  
Digital Scholarship  
Leadership Academy  
Medical Humanities



# CRIS

## Scholarly Support

---

### Assessment & Evaluation

Jennifer Rama, MD, MEd  
Brian Rissmiller, MD

02

### Curriculum Design

Jennifer Rama, MD, MEd  
Geeta Singhal, MD, MEd

02

### Design Thinking/Research

Brian Rissmiller, MD  
Satid Thammasitboon, MD, MHPE

02

### Instruction Technology

Jennifer Benjamin, MD, MS  
Lindsay Cameron, MD, MPH  
Satid Thammasitboon, MD, MHPE  
Teri Turner, MD, MPH, MEd

03

### Psychometric Studies

Shelly Kumar, MS, MSc  
Partha Krishnamurthy, PhD  
Satid Thammasitboon, MD, MHPE

03

### Qualitative Research

Audrea Burns, PhD  
Adam Cohen, MD, MEd  
Satid Thammasitboon, MD, MHPE  
Anne Gill, DrPH, MS, RN

03

### Research Design

Satid Thammasitboon, MD, MHPE  
Teri Turner, MD, MPH, MEd

02

### Writing and Rhetoric

Betty Lee Ligon, PhD

02

We are committed to creating a local community of educators and being a hub for scholarship at a regional, national and international level.

# CRIS

## Technical Support

---

### Biostatistics

Shelly Kumar, MD  
Partha Krishnamurthy, PhD  
Satid Thammasitboon, MD, MHPE

03

### Continuing Professional Development

Lindsay Cameron, MD, MPH  
Diane Nguyen, PharmD

04

### Clinical Teacher Development

Anne Gill, DrPH, MS, RN  
Geeta Singhal, MD, MEd  
Moushumi Sur, MD  
Teri Turner, MD, MPH, MEd

03

### Education Scholar Development

Geeta Singhal, MD, MEd  
Satid Thammasitboon, MD, MHPE  
Teri Turner, MD, MPH, MEd

03

### Grant Writing

Satid Thammasitboon, MD, MHPE  
Teri Turner, MD, MPH, MEd

03

### Publishing House

Betty Lee Ligon, PhD

02

### Program Administration

Remijio (Remy)my Elizondo  
Karla Gonzales  
Satid Thammasitboon, MD, MHPE

We are committed to creating a local community of educators and being a hub for scholarship at a regional, national and international level.



# MURMURATION

Medical Education Units  
for Research and Scholarship (MURS)

Based on the nature-inspired optimization model of starling's murmuration, the Center for Research, Innovation and Scholarship (CRIS) creates networks of scholars, the Medical Education Units for Research/Scholarship-MURS, to foster professional development and scholarly productivity. MURs are distributed, autonomous networks of scholars. Each MURS is comprised of scholars with shared interests in producing scholarship. They are prescribed to organize the collaborative efforts without hierarchies thereby allowing group members to explore a vast range of creativity. By creating decentralized intelligence networks of MURS, CRIS does not dictate MURS scholarly pursuits.



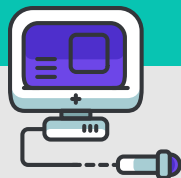
## Medical Humanities

Audrea Burns, PhD  
Gwen Erkonen, MD  
Anne Gill, DrPH, MS, RN  
Parag Jain, MD  
Dan Mahoney, MD  
Amanda Ruth, MD



## Digital & Social Media Scholarship

Anoop Agrawal, MD  
Jennifer Benjamin, MD  
Lindsey Cameron, MD



## Beside Ultrasound Education

Alan Riley, MD  
Kiyetta Alade, MD  
Adam Adler, MD  
Mona Khattab, MD  
Stephanie Leung, MD



## Evidence Academy

Mohan Pammi, MD, PhD  
Aarti Bavare, MD, MPH  
Krithika Lingappan, MD  
Nirica Borges, MD  
Ganga Gokulakrishnan, MD