

Baylor
College of
Medicine

FACULTY

Awards Day

WEDNESDAY, MAY 21, 2025



A MESSAGE FROM: THE PRESIDENT AND THE SENIOR DEAN OF FACULTY

On Faculty Awards Day, we recognize the faculty who help the Baylor College of Medicine community thrive across all our mission areas. We celebrate the leadership and actions of those who demonstrate a deep commitment to their trainees, patients and colleagues. These faculty make Baylor a destination for prospective trainees, world-class healthcare professionals and patients who are seeking the best care. We also are honoring the generous philanthropy that has established many of these awards and endowments. Our donor community elevates the ways in which we are able to acknowledge the faculty who exemplify the collaborative excellence that sets Baylor apart from other healthcare institutions.

Paul Klotman, M.D.
President & CEO
Executive Dean

Biykem Bozkurt, M.D., Ph.D.
Senior Dean of Faculty

2025

Award Recipients

THE BARBARA AND CORBIN J. ROBERTSON, JR. *Presidential Award for Excellence in Education*



NADIA ISMAIL, M.D., M.P.H., M.ED.
*Professor
Medicine*

Dr. Nadia Ismail has dedicated nearly two decades to advancing medical education in Baylor College of Medicine's School of Medicine. Her visionary leadership, innovative curriculum design and commitment to mentorship have left a lasting impact.

Her journey began as director of the Internal Medicine Clerkship (2007-2015), where she introduced ambulatory care experiences, spearheaded efforts to mitigate grading bias, and consistently earned top evaluations from students. These early contributions laid the foundation for her continued ascent into senior leadership roles, culminating in her position as vice dean of the School of Medicine.

In this capacity, Dr. Ismail has led initiatives that have transformed undergraduate medical education across BCM's Houston and Temple campuses. She has implemented competency-based medical education (CBME) frameworks and, most notably, chaired the Curriculum Renewal Working Group (CREW) – the institution's most comprehensive curriculum overhaul in decades. Under her guidance, the foundational curriculum was streamlined into an intensive 12-month structure and redesigned into integrated, organ-system-based blocks grounded in active learning. In the clinical phase, she launched the Academic Clinical Teachers and Assessors (ACTA) program to elevate faculty development and strengthen feedback for clinical learners.

Dr. Ismail also led the creation of the Point-of-Care Ultrasound (POCUS) program,

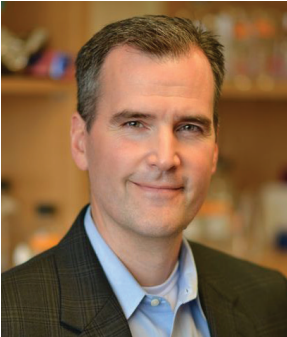
building a multidisciplinary team and securing advanced resources to embed POCUS across the medical education continuum. This nationally recognized program now features physician- and sonographer-led workshops and assessments that enrich clinical training.

Beyond her curricular innovations, Dr. Ismail has made faculty development a cornerstone of her work. Since 2015, she has expanded leadership in student affairs and curriculum at both campuses, successfully recruiting curriculum deans, course directors and the school's inaugural dean of interprofessional education.

Her influence extends well beyond Baylor. Dr. Ismail is an internationally recognized educator who delivers workshops on narrative assessment, curriculum innovation and equity in medical education. She has been honored with multiple teaching and leadership awards, including the prestigious Fulbright and Jaworski Faculty Excellence Awards. Her scholarship continues to shape national conversations on medical education reform.

Dr. Ismail's legacy is one of transformative leadership, mentorship and unwavering commitment to excellence in education. Her work has profoundly shaped the careers of students, residents and faculty. It exemplifies the spirit and values celebrated by the Barbara and Corbin J. Robertson Jr. Presidential Award for Excellence in Education.

THE BARBARA AND CORBIN J. ROBERTSON, JR. *Presidential Award for Excellence in Education*



MATTHEW N. RASBAND, PH.D.

*Professor
Neuroscience*

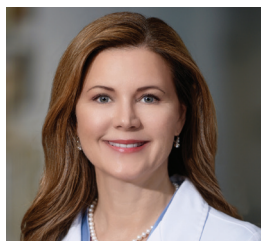
Dr. Matthew Rasband is a professor and the Vivian L. Smith endowed Chair in Neuroscience at Baylor College of Medicine. Dr. Rasband believes it is a privilege and responsibility to effectively train the next generation of scientists. He serves as the director of the Neuroscience Graduate Program and since 2009, oversees an NINDS T32 training grant.

His experience includes mentoring 22 Ph.D. graduate students in his laboratory, 15 postdoctoral researchers, and serving on more than 100 Ph.D. thesis advisory committees – many of his former trainees now run their own laboratories. Dr. Rasband received the 2019 NINDS Landis Award for Outstanding Mentoring. Dr. Rasband lectures in many different courses. He is the founding course director for Brain Cell Biology, which was awarded the Graduate School of Biomedical Sciences Best Course in Neuroscience in 2020 and 2023. In 2021 he was named the Baylor College of Medicine Graduate School of Biomedical Sciences Outstanding Lecturer in Neuroscience, and in 2023 was awarded the Baylor College of Medicine Graduate School of Biomedical Sciences Marc Dresden Excellence in Graduate Education Award. He was awarded the first Department of Neuroscience Outstanding Educator Award in 2011, and again

in 2015, 2019 and 2023 (he received this award every year that he has been eligible).

Outside of Baylor College of Medicine, Dr. Rasband serves as a member of the Society for Neuroscience's training committee and has been involved with the International Society for Neurochemistry's Advanced Neuroscience School as a member of its committee for more than a decade; in 2019, he organized and chaired the advanced school in Montreal, Canada, with 100 students attending from around the world. Dr. Rasband serves on the advisory boards of many neuroscience graduate programs in the U.S. and is a frequent reviewer of NIH training grants and fellowships. He has been extensively involved in graduate student, postdoctoral and faculty mentoring. He is a trained facilitator for the National Research Mentoring Network. Research questions in the Rasband laboratory focus on the molecular and cellular mechanisms that regulate neuronal excitability and the functional organization of axons in health and disease. To this end, his laboratory uses a broad array of experimental techniques, including genetically-modified mice, proteomics, microscopy (immunofluorescence, super-resolution and electron), electrophysiology, primary cell culture, biochemistry and molecular biology.

2024 APPOINTED ENDOWED CHAIRS AND PROFESSORS



SHANDA H. BLACKMON, M.D., M.P.H., FACS

Professor

Surgery

The Olga Keith Wiess Chair of Surgery III

The Olga Keith Wiess Chair of Surgery III was established by Olga Keith Wiess. Dr. Shanda H. Blackmon, completed her cardiothoracic surgery residency at Baylor College of Medicine. She was awarded the clinical instructorship position in thoracic surgical oncology at MD Anderson Cancer Center until Houston Methodist recruited her to build and lead the Division of Thoracic Surgery as chief for eight years. She then became a professor of thoracic surgery at the Mayo Clinic in Rochester, Minn. She holds several patents and served as the medical directors of the Mayo Clinic Consumer Digital Platform and the Mayo Clinic Digital User Experience-Design for the Center for Digital Health. She was then recruited back to Houston to lead Baylor's Lung Institute as the executive director. Dr. Blackmon is a tenured professor.



NICOLA A. HANANIA, M.D., M.S.

Professor

Medicine

The Brown Foundation Endowed Professorship in Adult Cystic Fibrosis

The Brown Foundation Endowed Professorship in Adult Cystic Fibrosis was established by The Brown Foundation, Inc. Dr. Nicola A. Hanania is a professor in the Section of Pulmonary and Critical Care Medicine and director of the Airways Clinical Research Center at Baylor College of Medicine. He also serves on Baylor's Faculty Senate and is chief of the Section of Pulmonary, Critical Care and Sleep Medicine at Ben Taub Hospital. He completed his medical training at the University of Jordan, a residency in internal medicine and a fellowship in pulmonary medicine at the University of Toronto, and a fellowship in critical care medicine and master's degree in clinical investigation at Baylor. His research focuses on clinical trials investigating novel treatments for asthma and chronic obstructive pulmonary disease (COPD). He has more than 320 peer-reviewed publications and has won multiple awards for his work. Currently, he is principal investigator for the COPDGene study, and he leads several other clinical trials in asthma and COPD.



FASIHA KANWAL, M.D., M.S.H.S.

Professor

Medicine

Nancy Chang, Ph.D., Endowed Professorship for the Biology of Inflammation Center II

The Nancy Chang, Ph.D., Endowed Professorship for the Biology of Inflammation Center II was established by Nancy Chang, Ph.D. Dr. Fasiha Kanwal is the director of the Institute for Clinical and Translational Research and associate dean for clinical and translational research at Baylor College of Medicine. She serves as the contact principal investigator for the collaborative new Clinical and Translational Science Award granted to Baylor and the University of Houston. Dr. Kanwal has been recognized with many awards for her research on risk factors for hepatocellular cancer and quality of care delivered to patients with liver disease. With more than 350 publications, she is among the top 2% of most frequently cited scientists. She served as chief of gastroenterology and hepatology at Baylor from 2007-2025 and was the first woman to be named editor-in-chief of a major clinical journal in gastroenterology and hepatology from 2007-2022. She is an elected member of the American Society for Clinical Investigators and the American Association of Physicians.



WILLIAM LAGOR, PH.D.

Professor

Integrative Physiology

Kyle and Josephine Morrow Endowed Professorship

The Kyle and Josephine Morrow Endowed Professorship was established by the Gordon West family. Dr. William Lagor earned his Ph.D. at the University of South Florida College of Medicine and received his postdoctoral training at the University of Pennsylvania Perelman School of Medicine. His research is focused on lipid metabolism and translational approaches to treat metabolic disorders. His lab uses adeno-associated viral vectors and genome editing to correct disease-causing mutations in the liver. Recently, his team developed Repair Drive, a platform technology to improve the efficiency of liver gene therapy. This invention temporarily inhibits an essential gene to eliminate diseased liver cells, much like performing antibiotic selection in a dish. Repair Drive confers a selective advantage to gene-edited hepatocytes, allowing them to divide and regenerate the liver. Dr. Lagor's lab is working on testing this novel approach in several metabolic liver diseases.



IRINA LARINA, PH.D.

Professor

Integrative Physiology

Kyle and Josephine Morrow Endowed Chair (IV)

The Kyle and Josephine Morrow Endowed Chair IV was established by the Gordon West family. Dr. Irina Larina is a professor in the Department of Integrative Physiology at Baylor College of Medicine. Her research integrates technological advancement in biophotonics with genetic mouse models to investigate developmental mechanisms and reproductive physiology. Dr. Larina received her M.S. in physics from Saratov State University in Russia and her Ph.D. in physiology and biophysics and bioengineering from The University of Texas Medical Branch at Galveston. She also completed postdoctoral training at Baylor. She is a recipient of several honors, including the 2022 Michael E. DeBakey, M.D., Excellence in Research Award. Dr. Larina is a fellow of the Optica Society and a senior member of the Society of Photo-Optical Instrumentation Engineers.



LEO LUZNIK, M.D.

Senior Faculty

Medicine

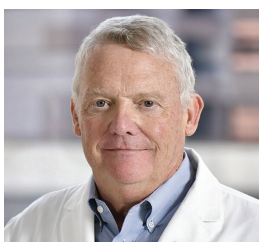
Alta G. Longenbaugh Professorship in Cancer Immunology

The Alta G. Longenbaugh Professorship in Cancer Immunology was established by The Levy Longenbaugh Fund. Dr. Leo Luznik is a highly accomplished physician-scientist with more than 20 years of experience, previously practicing at Johns Hopkins University School of Medicine. Dr. Luznik recently joined Baylor College of Medicine and received the \$6 million Cancer Prevention Research Institute of Texas Senior Scholar Award. His research focuses on allogeneic blood and marrow stem cell transplantation, as well as immunotherapy for hematological malignancies. His work has significantly advanced haplo-identical transplants for these diseases, leading to practice-changing clinical trials. This underscores the practical implications of his research. Additionally, Dr. Luznik has many influential publications and has been consistently funded for 15 years.



JAVIER F. MEDINA, PH.D.
Professor
Neuroscience
The Brown Foundation Chair in Neuroscience

The Brown Foundation Chair in Neuroscience was established by The Brown Foundation, Inc. Dr. Javier Medina graduated valedictorian and summa cum laude from Drexel University, with dual degrees in physics and in computer science. He received his Ph.D. in neuroscience from The University of Texas Health Sciences Center at Houston and later did postdoctoral work in neurophysiology at the University of California, San Francisco. In 2008, Dr. Medina was recruited to the University of Pennsylvania as an assistant professor in psychology and was later promoted to associate professor. He moved his lab to Baylor College of Medicine in 2015, where he is professor and director of the Center for Neuroscience and Artificial Intelligence. His lab uses computational approaches and a combination of mouse models, neurophysiology and genetic tools to unravel the neural circuit mechanisms underlying cerebellar function in health and disease.



WILLIAM "CHRIS" PEDERSON, M.D., FACS, FAAP
Professor
TCH Plastic Surgery
Josephine Abercrombie Endowed Professorship
in Plastic Surgery Research

The Josephine Abercrombie Endowed Professorship in Plastic Surgery Research was established by The George Robinson IV Foundation. Dr. William Pederson is professor and chief of the Division of Plastic Surgery at Baylor College of Medicine. Dr. Pederson has been awarded the Outstanding Teaching Faculty Award three times at Baylor. He is the senior editor of "Green's Operative Hand Surgery," the gold-standard textbook of hand surgery. He served on the editorial board of the Journal of Hand Surgery for 17 years and is on the international editorial boards of the Journal of Reconstructive Microsurgery and the Journal of Orthoplastic Surgery. He is past president of the American Society for Reconstructive Microsurgery and the American Association for Hand Surgery. He served six years as a director of the American Board of Plastic Surgery and is past co-chairman of the Combined Committee on Surgery of the Hand and co-chairman of the Hand Surgery Examination Committee. Recently, the American Association of Plastic Surgeons named Dr. Pederson a Distinguished Fellow.



ROBERT T. RIPLEY, M.D.
Professor
Surgery
Meyer-DeBakey Chair in Investigative Surgery

The Meyer-DeBakey Chair in Investigative Surgery was established by Emma Meyer. Dr. Robert T. Ripley received his medical degree from Vanderbilt University, trained at Memorial Sloan-Kettering Cancer Center, completed a Surgical Oncology Fellowship at the National Cancer Institute and completed a general surgery residency at the University of Colorado. He is a professor in the David J. Sugarbaker, M.D., Division of Thoracic Surgery. His lab focuses on mechanisms to overcome resistance to anti-cancer therapy. Additionally, he leads an investigator-initiated trial for patients with mesothelioma. Dr. Ripley serves as the director of the Mesothelioma Treatment Center, Thoracic Surgical Research and several clinical trials for the Michael E. DeBakey Department of Surgery. He also is the vice president of the Board of Directors for the Meso Foundation and is on the steering committees for the International Association for the Study of Lung Cancer Staging Project and the National Mesothelioma Virtual Database.



JASVINDER SINGH, M.D., M.P.H.

Professor

Medicine

**Nancy Chang, Ph.D., Endowed Chair for the
Biology of Inflammation Center I**

The Nancy Chang, Ph.D., Endowed Chair for the Biology of Inflammation Center I was established by Nancy Chang, Ph.D. Dr. Jasvinder Singh is a senior faculty member and chief of the Section of Immunology, Allergy and Rheumatology at Baylor College of Medicine, as well as a physician at the Michael E. DeBakey Veterans Affairs Medical Center. Dr. Singh completed his medical degree at the University College of Medical Sciences in India, internal medicine residency at State University of New York Upstate Medical University, followed by a rheumatology fellowship at Washington University in Missouri. Prior to joining Baylor, he served patients at the Minneapolis and Birmingham Veterans Affairs Medical Centers. As a physician-scientist for 25 years, his research has focused on clinical trials and observational studies of patient outcomes in gout, osteoarthritis, total joint replacement, lupus and rheumatoid arthritis. His research interests include big data, pharmacoepidemiology, systematic review and guideline development, patient education and interventions to improve quality of life in rheumatic diseases.



FRANÇOIS ST-PIERRE, PH.D.

Associate Professor

Neuroscience

Vivian L. Smith Endowed Professorship in Neuroscience

The Vivian L. Smith Endowed Professorship in Neuroscience was established by Vivian L. Smith. Dr. François St-Pierre engineers tools for neuroscientists. A native of Quebec City, he earned his B.A. and M.A. in natural sciences at the University of Cambridge and a Ph.D. in Computational and Systems Biology at the Massachusetts Institute of Technology. He trained at Stanford University in Bioengineering and Neuroscience before joining Baylor College of Medicine in 2015, where he is now an associate professor of neuroscience. His lab develops fluorescent neural activity indicators, light-gated channels to control the brain, genetic circuits for stable protein expression and novel approaches to rapidly and precisely engineer proteins, nucleic acids and cells. Of these, his lab is best known for developing sensitive biosensors that enable imaging of fast brain electrical activity in animal models. Dr. St-Pierre is a McNair Scholar, a Klingenstein-Simons Foundation Fellow and a recipient of a National Science Foundation innovation award. He recently co-founded Imagen Bioworks to commercialize his lab's inventions.



JOSE R. TORREALBA, M.D.

Professor

Pathology

W.L. Moody, Jr., Chair in Pathology

The W.L. Moody, Jr., Chair in Pathology was established by The Moody Foundation. Dr. Jose Torrealba completed his medical degree in 1994 at the Central University of Venezuela, a postdoctoral fellowship in molecular biology and a residency in anatomic and clinical pathology at the University of Wisconsin, and a fellowship in immunopathology of transplantation at the University of Toronto. Dr. Torrealba became an assistant professor of pathology at the University of Wisconsin until 2011, and then an associate professor until 2012. From 2012 to 2024, he was the Drs. George and Anne Race Distinguished Professor of Pathology at the Department of Pathology at The University of Texas Southwestern Medical Center in Dallas. In July 2024, he joined Baylor College of Medicine as a professor and the W.L. Moody Chair in Pathology, as well as chief of pathology at Baylor St. Luke's Medical Center. His areas of expertise include thoracic, renal and transplantation pathology. He has more than 140 peer-reviewed publications.



RAVI K. GHANTA, M.D., FACS

Professor

Surgery

The Olga Keith Wiess Endowed Professorship of Surgery II

The Olga Keith Wiess Endowed Professorship of Surgery II was established by Olga Keith Wiess. Dr. Ravi Ghanta is chief of cardiac surgery at Ben Taub Hospital. Dr. Ghanta holds multiple leadership roles in the Michael E. DeBakey Department of Surgery, including program director for both Accreditation Council for Graduate Medical Education thoracic surgery-integrated residency and thoracic surgery fellowship programs, continuing Baylor's educational mission of training the next generation of thoracic surgeons. Dr. Ghanta also is a surgeon-scientist with a NIH-funded lab investigating the role of the immune system for post-infarct myocardial repair. Additionally, he is the co-director of the Advanced Statistics and Machine Learning for the Advancement of Surgery (ATLAS) program at Baylor that seeks to leverage novel statistical methods to analyze large clinical datasets.



YUQING HUO, M.D., PH.D.

Professor

Ophthalmology

Danny B. Jones Endowed Chair in Ophthalmology

The Danny B. Jones Endowed Chair in Ophthalmology was established by friends of Dr. Jones. Dr. Yuqing Huo is a professor at the Cullen Eye Institute and the Department of Ophthalmology at Baylor College of Medicine. As a researcher, Dr. Huo studies the molecules and pathways that control leukocyte recruitment and activation, endothelial inflammation, the proliferation and migration of vascular smooth muscle cells and fibroblasts and the mesenchymal transition of these cells in the development of cardiovascular and metabolic diseases. Microvascular diseases, especially retinopathy of prematurity, proliferative diabetic retinopathy and age-related macular degeneration, are among the major research areas in Dr. Huo's investigations. By studying the metabolic and inflammatory processes underlying these diseases, Dr. Huo's group is contributing to a deeper understanding of these conditions and paving the way for developing novel therapeutic interventions in vascular and ocular diseases.



ELIZABETH KVALE, M.D., M.S.P.H.

Senior Faculty

Medicine

Robert J. Luchi Clinical Chair in Geriatrics

The Robert J. Luchi Clinical Chair in Geriatrics was established by friends of Dr. Luchi. Dr. Elizabeth Kvale is a nationally recognized leader in geriatrics and palliative care, dedicated to advancing the health and well-being of vulnerable populations, particularly older adults and patients with serious illnesses. Her innovative work focuses on training health systems to deliver exceptional care and pioneering new models tailored to meet the complex needs of older cancer patients. She has secured funding from multiple federal sources to support her research and program development. A committed mentor, Dr. Kvale has successfully guided junior researchers to independent careers in cancer survivorship, geriatrics and palliative care. With a career defined by leadership, compassion and a steadfast commitment to improving lives, she continues to set the standard for excellence in care for those facing the challenges of aging and serious illness.



IDA F. ORENGO, M.D.

Professor and Chair

Dermatology

Dr. John E. Wolf, Jr., Endowed Chair in Dermatology

The Dr. John E. Wolf, Jr., Endowed Chair in Dermatology was established by an anonymous donor and honors Dr. Wolf, former longtime chair of the Department of Dermatology. Dr. Ida Orenko completed her medical degree at Baylor College of Medicine, where she spent several years conducting photobiology research under her mentor Homer Black, Ph.D., and explored various interventions to prevent skin cancer. Dr. Orenko then finished an internship in internal medicine at the St. Luke's Internal Medicine program, followed by a dermatology residency at Baylor and a dermatology surgery fellowship at Harvard Medical School. She then returned to Baylor to embark on a more than 30-year career at the College, where she rose to the rank of professor and chair of dermatology. During these years, she continued her research, developed a dermatology surgery fellowship at Baylor, trained more than 20 fellows and published more than 100 scientific papers. She has received several grants, including a U.S. Department of Veterans Affairs Merit Review Award studying melanoma. In her new role as chair, she has advanced dermatology to a state-of-the-art department.



ALEXIS SHAFII, M.D., FACS

Associate Professor

Surgery

Jimmy and Roberta Howell Professorship in Cardiovascular Surgery

The Jimmy and Roberta Howell Professorship in Cardiovascular Surgery was established by the Howell family and friends of Dr. Howell and Roberta Howell. Dr. Alexis Shafii is a cardiothoracic surgeon with expertise in thoracic transplantation and adult cardiac surgery. He earned his medical degree from the University of South Florida Morsani College of Medicine and continued his training with a residency in general surgery at the University of South Florida and a thoracic surgery fellowship and advanced cardiac fellowship at the Cleveland Clinic. His clinical focus includes thoracic organ failure, heart and lung transplantation and implantation of mechanical circulatory support devices. Currently, he is the surgical director of the heart transplant program at Baylor St. Luke's Medical Center and the heart transplant and left ventricular assist device (LVAD) program at the Michael E. DeBakey Veterans Affairs Center. He previously directed transplant programs at major medical centers in Texas and Kentucky. Dr. Shafii treats end-state heart and lung disease and adult-acquired cardiac diseases such as coronary artery disease, heart valve disease and aortic pathologies.



CHRISTINA WENG, M.D., M.B.A.

Professor

Ophthalmology

**Alice R. McPherson Retina Research Foundation
Chair in Ophthalmology**

The Alice R. McPherson Retina Research Foundation Chair in Ophthalmology was established by the Retina Research Foundation. Dr. Christina Weng is a tenured professor in ophthalmology at Baylor College of Medicine. Dr. Weng also serves as the Vitreoretinal Diseases and Surgery Fellowship Program director. She earned her medical degree at the University of Michigan and an M.B.A. degree from the University of Michigan Ross School of Business. Following this, she completed an ophthalmology residency at the Johns Hopkins University Wilmer Eye Institute and a surgical retina fellowship at the Bascom Palmer Eye Institute at the University of Miami. Currently, Dr. Weng is involved in multiple clinical trials and leads several research studies in her areas of interest: diabetic eye disease, medical economics and telemedicine. She is the co-editor of the book "Women in Ophthalmology: A Comprehensive Guide for Career and Life."

BEN AND MARGARET LOVE FOUNDATION

Bobby Alford Award for Academic Clinical Professionalism



GORDON E. SCHUTZE, M.D.

*Professor
Pediatrics*

The day Dr. Gordon Schutze matched into the pediatrics residency at Baylor College of Medicine – March 14, 1984 – changed his life, but he did not yet realize how. The path he chose with Baylor started him on a path split into three distinct focus areas: clinical, public health and administrative. While at Arkansas Children's Hospital and Texas Children's Hospital, Schutze learned professionalism, to have respect and empathy for others, how to read body language, and be present, honest and transparent. Working clinically in the pre-antiretroviral therapy days of the HIV-AIDS pandemic, he learned how to share, grieve, mourn and cry with families and friends of patients.

Through his work with the Baylor International Pediatric AIDS Initiative (BIPAI), he served the public and learned the importance of listening before speaking. These years taught him how to talk to politicians about healthcare, not politics; he accepted that life often is not fair and the reason so many healthcare disparities are present in children can be explained by their country of birth. Working abroad, Schutze worked with colleagues who shared their knowledge, and he credits those experiences with making him not only a better physician, but a better person.

Now in administration, he has learned the value of a "poker face," how to respectfully speak up for what is right, when to compromise, and how to look someone in the eye and admit a wrong. A passion for education has consistently flowed through every phase of his career, and working with all types of learners as a faculty member,

program director and dean continues to motivate him. One of the most satisfying aspects of working with learners is watching them grow into confident and competent physicians and enjoying their successes with them.

While all of these experiences, and many more, have made Schutze the person and physician he is, he knows that continuing to learn skills and new traits at Baylor will aid him in the coming phases of his career. He would like to thank the Ben and Margaret Love Foundation Bobby Alford Award for Academic Clinical Professionalism selection committee, the Center for Professionalism and the Office of Faculty Affairs & Development for supporting such an award. In addition, he would like to recognize the other award nominees, as well as the other faculty members that display the traits of professionalism and humanism in all they do.

Schutze serves as vice dean and professor for Baylor College of Medicine in Houston, while serving also as an executive vice chair for the Department of Pediatrics. He serves as the associate dean for clinical and academic affairs for Baylor's program at CHRISTUS Children's in San Antonio. Earlier in his career, Schutze was professor of pediatrics and pathology at the University of Arkansas for Medical Sciences / Arkansas Children's Hospital. A graduate of St. Mary's University in San Antonio, he earned his medical degree from Texas Tech University in Lubbock and completed his pediatric residency and infectious diseases fellowship at Baylor College of Medicine and Texas Children's.

CLARK

Faculty Service Awards



MALVIKA JUNEJA, M.D.
Associate Professor
Family & Community Medicine



SHWETA PARMEKAR, M.D.
Assistant Professor
Pediatrics



JESSICA DAVILA, PH.D., M.S.
Professor
Medicine



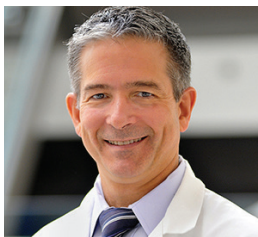
ESTHER SAMPAYO, M.D., M.P.H.
Associate Professor
Pediatrics



CLAIRE HORNER, J.D., M.A.
Associate Professor
Center for Medical Ethics and Health Policy

MASTER CLINICIAN

Faculty Award for Excellence in Patient Care



PEDRO DIAZ-MARCHAN, M.D.
*Associate Professor
Radiology*



YADOLLAH HARATI, M.D.
*Professor
Neurology*



**CATHERINE "MARY" HEALY,
M.B., B.CH., B.A.O.**
*Associate Professor
Pediatrics*



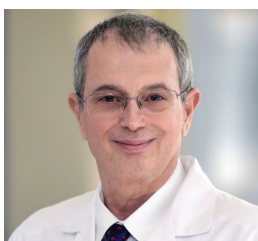
**JOSE ALBERTO HERNANDEZ,
M.D.**
*Associate Professor
Radiology*



JOSEPH KASS, M.D., J.D.
*Professor
Neurology*



ALICIA KOWALCHUK, D.O.
*Associate Professor
Family & Community Medicine*



GEORGE MANDY, M.D.
*Professor
Pediatrics*



IDA ORENKO, M.D.
*Professor
Dermatology*



ALIYA SARWAR, M.D.
*Professor
Neurology*

JOHN P. MCGOVERN

Outstanding Teacher Awards

FOUNDATIONAL SCIENCES

BRYAN TUCKER, D.O., M.S.

*Associate Professor
Medicine*

CLINICAL SCIENCES

ARINDAM SARKAR, M.D.

*Assistant Professor
Family & Community Medicine*

GRADUATING CLASS

Outstanding Faculty Award

TARA HARRIS, M.D.

*Assistant Professor
Obstetrics & Gynecology*

ATUL MAHESHWARI, M.D.

*Associate Professor
Neurology*

NAVDEEP SEKHON, M.D.

*Associate Professor
Emergency Medicine*

ROSA MICHELLE SCHMIDT, M.D., M.P.H.

*Associate Professor
Medicine*

NORTON ROSE FULBRIGHT

Faculty Excellence Award for Teaching and Evaluation

ADAM ADLER, M.D., M.S., FAAP, FASE

*Associate Professor
Anesthesiology*

NICHOLE DAVIS, M.D., M.ED.

*Assistant Professor
Pediatrics*

MASIH AHMED, M.D.

*Assistant Professor
Ophthalmology*

VALERIE DEGREGORIO, M.S.

*Assistant Professor
School of Health Professions*

MEGAN ATKINSON, M.D.

*Assistant Professor
Anesthesiology*

KATY DELJOUI, M.D., FRACP, M.ED.

*Assistant Professor
Surgery*

ABIGAIL CASWELL, D.N.P.

*Assistant Professor
Anesthesiology*

SUNJAY DEVARAJAN, M.D.

*Assistant Professor
Medicine*

EVA CLARK, M.D., PH.D., CTROPMED

*Assistant Professor
Medicine*

OSARUMEN DOGHOR, M.D.

*Assistant Professor
Obstetrics & Gynecology*

ANTHONY ECKER, PH.D., M.ED.
Assistant Professor
Psychiatry & Behavioral Sciences

TAMER ELATTARY, M.D.
Assistant Professor
Anesthesiology

KATHRYN FISHER, M.D., M.S., MPHE
Assistant Professor
Emergency Medicine

ELIZABETH FRANKLIN, PH.D., M.ED.
Assistant Professor
Pediatrics

YURIKO FUKUTA, M.D., PH.D.
Assistant Professor
Medicine

CLINTON FULLER, M.D.
Assistant Professor
Anesthesiology

MAREN FULLER, M.D.
Assistant Professor
Pathology & Immunology

JESSICA GAINES, B.S.N., D.N.P.
Assistant Professor
Anesthesiology

PARASKEVI GEORGIADIS, M.D.
Assistant Professor
Pediatrics

HOLLY HARRIS, M.D.
Assistant Professor
Pediatrics

ANGELA HASKINS, M.D.
Assistant Professor
Otolaryngology

DAVID HERNANDEZ, M.D., FACS
Associate Professor
Otolaryngology

SHEILA HILL, M.D.
Assistant Professor
Obstetrics & Gynecology

KAMAL HIRANI, M.D.
Assistant Professor
Medicine

MOHAMMAD HIRZALLAH, M.D., MMSC
Assistant Professor
Neurology

JOHN HOLLIER, M.D., M.S., M.P.H.
Assistant Professor
Pediatrics

TAYLOR HOWARD, M.D.
Assistant Professor
Pediatrics

LAUREN JACOBS, M.D.
Assistant Professor
Pediatrics

LAKSHMI JONNA, M.D.
Assistant Professor
Anesthesiology

CAROLINA JORGEZ, PH.D.
Assistant Professor
Urology

MEGHA KANJIA, M.D.
Associate Professor
Anesthesiology

KATHRYN KEMERE, M.D., M.S.
Assistant Professor
Medicine

RACHEL KENTOR, PH.D.
Assistant Professor
Pediatrics

NATALIA KHALAF, M.D., M.P.H.
Assistant Professor
Medicine

WILSON LAM, M.D.
Associate Professor
Pediatrics

ARUMINA MISRA, M.D.
Associate Professor
Cardiology

NANDAN MONDAL, M.SC., MPHIL, PH.D.
Assistant Professor
Surgery

ALANA NEWELL, PH.D., M.ED.
Assistant Professor
*Huffington Department of Education, Innovation,
and Technology*

LOAN NGUYEN, M.D., M.ED.
Assistant Professor
Pediatrics

BARBARA NZEGWU, M.D.
Assistant Professor
Anesthesiology

VICENTE OROZCO-SEVILLA, M.D.
Assistant Professor
Surgery

NMAZUO OZUAH, M.D., MBBS

*Assistant Professor
Pediatrics*

ZACHARY PALLISTER, M.D.

*Assistant Professor
Surgery*

ANGELA PENG, M.D.

*Assistant Professor
Otolaryngology*

AMANDI RHETT, M.D., CPO

*Assistant Professor
School of Health Professions*

ELIZABETH ROSSMAN BEEL, M.D., M.P.H.

*Assistant Professor
Anesthesiology*

JAIME RUEDA, M.D.

*Assistant Professor
Medicine*

AMANDA RUTH, M.D.

*Assistant Professor
Pediatrics*

SHAGUN SACHDEVA, M.D.

*Assistant Professor
Pediatrics*

AURA SANCHEZ MEJIA, M.D.

*Assistant Professor
Pediatrics*

IKUE SHIMIZU, M.D.

*Associate Professor
Dermatology*

AARON SHORT, M.D., M.P.H.

*Assistant Professor
Psychiatry & Behavioral Sciences*

SUNTHOSH SIVAM, M.D.

*Assistant Professor
Otolaryngology*

KEVIN TZAN, M.D.

*Assistant Professor
Anesthesiology*

JAMES WILKINSON, M.D.

*Assistant Professor
Pediatrics*

CHAD WILSON, M.D., M.P.H.

*Associate Professor
Surgery*

RACHEL WOLFE, PH.D.

*Assistant Professor
Pediatrics*

SHABANA YUSUF, M.D., M.ED.

*Associate Professor
Pediatrics*

NORTON ROSE FULBRIGHT

Faculty Excellence Award for Educational Leadership

SHARONDA ALSTON-TAYLOR, M.D.

*Assistant Professor
Pediatrics*

CHRISTY YOON-HEE CHAI, M.D.

*Associate Professor
Surgery*

KYLER GODWIN, PH.D., M.P.H.

*Associate Professor
Medicine*

WILLIAM KYLE, M.D.

*Associate Professor
Pediatrics*

ATUL MAHESHWARI, M.D.

*Associate Professor
Neurology*

DHARANI NARENDRA, M.D.

*Assistant Professor
Internal Medicine*

BANI RATAN, M.D., ED.D.

*Associate Professor
Obstetrics & Gynecology*

DANIEL TOLPIN, M.D.

*Associate Professor
Anesthesiology*

SHABANA YUSUF, M.D., M.ED.

*Associate Professor
Pediatrics*

NORTON ROSE FULBRIGHT

Faculty Excellence Award for Educational Research

PETER BOEDEKER, PH.D.

*Assistant Professor
School of Medicine*

SARAH-ANN KEYES, ED.D., PA-C

*Assistant Professor
School of Health Professions*

ANITA KUSNOOR, M.D.

*Associate Professor
Medicine*

ATUL MAHESHWARI, M.D.

*Associate Professor
Neurology*

ARINDAM SARKAR, M.D.

*Assistant Professor
Family & Community Medicine*

MUNDER ZAGAAR, PH.D., PHARM.D.

*Associate Professor
Biochemistry & Molecular Pharmacology*

NORTON ROSE FULBRIGHT

Faculty Excellence Award for Educational Materials

ADAM ADLER, M.D., M.S., FAAP, FASE

*Associate Professor
Anesthesiology*

ARVIND CHANDRAKANTAN, M.D.

*Associate Professor
Anesthesiology*

RACHEL DAVIS, M.D.

*Assistant Professor
Surgery*

TAM DOAN, M.D., MSC

*Assistant Professor
Pediatrics*

SAUL FLORES, M.D.

*Associate Professor
Pediatrics*

ERIN GREENLEAF, M.D., M.S.

*Assistant Professor
Surgery*

MINI MICHAEL, M.D., FRACP, M.ED.

*Associate Professor
Pediatrics*

VASILIKI RAHIMZADEH, PH.D., M.ED.

*Assistant Professor
Center for Medical Ethics & Health Policy*

NAVDEEP SEKHON, M.D.

*Associate Professor
Emergency Medicine*

SHABANA YUSUF, M.D., M.ED.

*Associate Professor
Pediatrics*

STAR

Award for Excellence in Patient Care

KHANNAN K. ATHREYA, M.D.
*Assistant Professor
Medicine*

MEGAN ATKINSON, M.D.
*Assistant Professor
Anesthesiology*

DIANA TEJ ATWAL, M.D.
*Assistant Professor
Family & Community Medicine*

PRIYA BHAT, M.D.
*Assistant Professor
Pediatrics*

CHRISTY CHAI, M.D.
*Associate Professor
Surgery*

ARVIND CHANDRAKANTAN, M.D.
*Associate Professor
Anesthesiology*

REENA V. CHOKSHI, M.D.
*Associate Professor
Medicine*

KEVIN CHU, M.D.
*Assistant Professor
Anesthesiology*

DANA LYNN CLARK, M.D.
*Assistant Professor
Family & Community Medicine*

HOLLY CLAYTON, M.P.A.S., PA-C
*Assistant Professor
Surgery*

DANIELLE COMEAUX, M.P.A.S., PA-C
*Instructor
Physician Assistant Program*

SNEHAL SUBODH DESAI, M.D.
*Associate Professor
Radiation Oncology*

ANKHI DUTTA, M.D., M.P.H.
*Associate Professor
Pediatrics*

OLUWATOSIN FATUSIN, M.D., M.P.H.
*Assistant Professor
Pediatrics*

AVEGAIL G. FLORES, M.D.
*Assistant Professor
Medicine*

RICARDO FLORES, M.D.
*Associate Professor
Pediatrics*

RUBEN HERNAEZ, M.D., M.P.H. PH.D.
*Associate Professor
Medicine*

GRACE HUANG, M.D.
*Assistant Professor
Anesthesiology*

SHILPA JAIN, M.D.
*Associate Professor
Pathology & Immunology*

BHARAT JOSHI, M.D., FAAFP
*Assistant Professor
Family & Community Medicine*

BASIL ZOUHAIR KAAKI, DMSC, PA-C
*Assistant Professor
Urology*

SOUHAIL M. KARRAM, M.D.
*Assistant Professor
Anesthesiology*

TAMRA KELLY, D.N.P.
*Assistant Professor
Anesthesiology*

JULIE KLINGER, M.S., PA-C
*Instructor
Pediatrics*

JAMIE LAI, M.D.
Assistant Professor
Pediatrics

MICHELE M. LOOR, M.D.
Associate Professor
Surgery

RENATA SOUZA MARICEVICH, M.D.
Associate Professor
Surgery

SCOTT D. MCKAY, M.D.
Associate Professor
Orthopedic Surgery

NIDHI MEHROTRA, M.D.
Assistant Professor
Family & Community Medicine

PARTH MEHTA, M.D., M.P.H.
Associate Professor
Pediatrics

AHMED A. NASSR, M.D., PH.D.
Associate Professor
Obstetrics & Gynecology

ROGER NICOME, M.D.
Associate Professor
Pediatrics

VALERIE PARRISH, MPAS, PA-C
Assistant Professor
Orthopedic Surgery

PAMELA C. PETERSEN, M.D., FAAP
Assistant Professor
Pediatrics

MIGUEL A. PRADA RICO, M.D.
Assistant Professor
Anesthesiology

KIRANMYE REDDY, M.D.
Assistant Professor
Pediatrics

AMEE REVANA, D.O., FAASM
Associate Professor
Pediatrics

LIZABETH E. RILEY, M.D.
Assistant Professor
Family & Community Medicine

BRANDI RUNNELS, M.M.S., M.S.
Instructor
Pediatrics

MARIA KRISTINE REYES SAN VALENTIN, M.D.
Assistant Professor
Pediatrics

BRENT SCHAKETT, M.D.
Assistant Professor
Anesthesiology

SHAZIA SHEIKH, M.D.
Assistant Professor
Medicine

SHREYA SHETH, M.D.
Associate Professor
Pediatrics

KARIN TASLIMI, PH.D.
Associate Professor
Pediatrics

URSULA TAWBI, M.D.
Assistant Professor
Family & Community Medicine

DANIEL TOLPIN, M.D.
Associate Professor
Anesthesiology

MANPREET VIRK, M.D.
Assistant Professor
Pediatrics

EARLY CAREER

Faculty Award for Excellence in Patient Care

CHARU AGRAWAL, M.D.

*Assistant Professor
Medicine*

ANDRES BACIGALUPO LANDA, M.D.

*Assistant Professor
Anesthesiology*

ANTHONY BALZER, M.D.

*Assistant Professor
Radiology*

ANNA BANC-HUSU, M.D., MSCI

*Assistant Professor
Pediatrics*

KEISHA BARTON, M.D.

*Assistant Professor
Pediatrics*

ERIC BIH, M.D.

*Assistant Professor
Radiology*

JOLIE BRITT, M.D.

*Assistant Professor
Pediatrics*

GEORGE CHOLANKERIL, M.D.

*Assistant Professor
Medicine*

NICHOLE R. DAVIS, M.D., M.ED.

*Assistant Professor
Pediatrics*

SELORM DEI-TUTU, M.D., M.P.H.

*Assistant Professor
Pediatrics*

KATY DELJOUI, M.D.

*Assistant Professor
Surgery*

LINDSAY EILERS, M.D.

*Assistant Professor
Pediatrics*

MEHA GOYAL FOX, M.D., FARS, FAAOA

*Assistant Professor
Otolaryngology*

ANIL P. GEORGE, M.D.

*Assistant Professor
Pediatrics*

KUANG-CHUN J. HSIEH, M.D.

*Assistant Professor
Radiology*

EMANUEL NARCIS HUSU, M.D.

*Assistant Professor
Physical Medicine & Rehabilitation*

SALMAAN AZAM JAWAID, M.D.

*Assistant Professor
Medicine*

SCOTT LEIKIN, M.D.

*Assistant Professor
Anesthesiology*

LU LIN, M.D., PH.D.

*Assistant Professor
Neurology*

TRAN LOCKE, M.D.

*Assistant Professor
Otolaryngology*

ROBERT LYNCH, M.D.

*Assistant Professor
Radiology*

SAMUEL G. MCCLUGAGE III, M.D.

*Assistant Professor
Neurosurgery*

JENNIFER R. MCKINNEY, M.D., M.P.H.

*Assistant Professor
Obstetrics & Gynecology*

BRINKLEY KWYN MOORE, M.D.

*Assistant Professor
TCH Plastic Surgery*

ANVINH NGUYEN, M.D.

*Assistant Professor
Anesthesiology*

MAILAN THANH NGUYEN, M.D.

*Assistant Professor
Pediatrics*

OLUBUNMI OLADUNJOYE, M.D., M.P.H.

*Assistant Professor
Medicine*

AMANDA PADILLA, M.D.

*Assistant Professor
Pediatrics*

MEERA PATEL, M.D., M.H.S.

*Assistant Professor
Medicine*

TAM DAN PHAM, M.D.

*Assistant Professor
Pediatrics*

THOMAS POWELL, M.D.

*Assistant Professor
Anesthesiology*

CRAIG PYMENTO, M.D.

*Assistant Professor
Pediatrics*

UMA S. RAMASWAMY, M.D.

*Assistant Professor
Otolaryngology*

XINQI REN, M.D.

*Assistant Professor
Family & Community Medicine*

RYAN HENRY ROCHAT, M.D., PH.D., M.S.

*Assistant Professor
Pediatrics*

JUSTIN M. SEGRAVES, M.D.

*Assistant Professor
Medicine*

NIDHI SINGH, M.D.

*Assistant Professor
Pediatrics*

HENRI TRABOULSI, M.D.

*Assistant Professor
Otolaryngology*

HEATHER WEST, PA-C, MMSPAS

*Assistant Professor
Surgery*

KATHERINE J. WILLIAMS, M.D.

*Assistant Professor
Ophthalmology*

MASTER TEACHER FELLOWSHIP

Program Graduates

UNOMA AKAMAGWUNA, M.D.

*Assistant Professor
Physical Medicine & Rehabilitation*

JOLIE BRITT, M.D.

*Assistant Professor
Pediatrics*

DHARANI K. NARENDRA, M.D.

*Assistant Professor
Medicine*

ARINDAM SARKAR, M.D.

*Assistant Professor
Family & Community Medicine*

ACKNOWLEDGMENTS

With sincere appreciation, we recognize all who generously contributed their time and expertise to make this celebration possible. This year's selection process was guided by the dedicated efforts of more than 150 faculty peer reviewers, each of whom devoted hours of thoughtful service to honor the accomplishments of their colleagues. Their commitment reflects the spirit of collaboration and excellence that defines our community..

ANJALI AGGARWAL, M.D.
MEDHA AIRY, MBBS
MAHBOOB ALAM, M.D., MBBS
ELUMALAI APPACHI, M.D. MBBS
ALI ABBAS ASGHAR-ALI, M.D.
ANDRES AVELLANEDA OJEDA, M.D.
MANDEEP BAJAJ, M.D.
THARA BALA, M.D.
KAMNA BANSAL, MBBS
MANISH BANSAL, MBBS
NEAL BARSHES, M.D., M.P.H.
JEFFREY BATES, M.D.
PATRICIA BAXTER, M.D., M.B.A.
AMIT BHATT, M.D.
ELIZABETH BOSQUEZ, M.D.
MARIA ELENA BOTTAZZI, PH.D.
MARIA GABRIELA BUHEIS, M.D.
JESSICA CASAS, M.D., M.P.H.
MEGAN CASTILLE, M.S.
ANGELA CATIC, M.D.
CHRISTY CHAI, M.D.
SUBHASIS CHATTERJEE, M.D.
KATHLEEN CHEN, M.D., M.S.
ANDREW CHILDRESS, PH.D., M.A.
LUBNA CHOCHAN, M.D.
DOMINIQUE COPE
JEFFREY CULLY, PH.D.
RACHEL CURRY, PH.D.
KENNETH DANG
SHAEQUA DASNADI, MBBS
CARLA DAVIS, M.D.
ALI DENKTAS, M.D.
STEPHANIE DESANDRO, M.S.
SHWETA DHAR, M.D., M.S.

JENNIFER DIETRICH, M.D., M.SC.
ROOPALI DONEPUDI, M.D.
JAMES DUNN-URBONAS, PH.D., B.E.
ANKHI DUTTA, MBBS, M.P.H.
SOPHIA EBENEZER, M.D.
DEAN EDWARDS, PH.D.
ADEL ELHENNAWY, M.B., B.CH., M.SC.
ELIZABETH ELLIOTT, M.S.
JOSLYN FISHER, M.D., M.P.H.
TERRI FLETCHER, PH.D., M.A.
JENNIFER FOSTER, M.D., M.P.H.
JOAN FRIEDLAND, M.D., M.P.H.
ELLEN FRIEDMAN, M.D.
YURIKO FUKUTA, M.D., PH.D.
SUZANNE FUQUA, PH.D., M.S.
RUCHI GABA, M.D.
NHU THAO GALVAN, M.D., M.P.H.
MANISHA GANDHI, M.D.
AIMEE GARCIA, M.D.
BETH GARLAND, PH.D., M.A.
RAVI GHANTA, M.D.
ANNE GILL, DR.P.H., M.S.
SUSAN GILLESPIE, M.D., PH.D.
CHRIS GLOVER, M.D., M.B.A.
GANGA GOKULAKRISHNAN, M.D., MBBS, M.S.
MOLLIE GORDON, M.D., M.A.
MILENA GOULD SUAREZ, M.D.
STEPHEN GREENBERG, M.D.
SARAH GUNTER, PH.D., M.P.H.
MARK HARBOTT, M.D., M.S.
CHRISTOPHER HOWARD, M.D.
NATALIE HUNDT, PH.D., M.A.
RAEGAN HUNT, M.D., PH.D.
IONELA IACOBAS, M.D.

LEANNE JACKSON, M.D.
SHILPA JAIN, M.D.
FARIHA JAMAL, MBBS
CATHERINE JOSEPH, M.D.
CHRISTINA KAO, M.D., PH.D.
HOLLAND KAPLAN, M.D.
MONA KARIMULLAH, M.D.
BRENT KAZINY, M.D., M.A.
NATALIA KHALAF, M.D.
JEFFREY KHAN, M.D.
FAREED KHAN, MBBS, M.P.H.
ANNA LANG
VERONICA LENGE DE ROSEN, M.D.
DORIS LIN, M.D., M.S.
RONALD MAAG, M.D.
JOY MACKEY, M.D.
GEORGE MANDY, M.D.
RENATA MARICEVICH, M.D.
BONNIE MCCANN-CROSBY, M.D.
JULIE MCMANEMY, M.D., M.P.H.
MARTHA MIMS, M.D., PH.D.
ARUMINA MISRA, M.D.
LAURA MONSON, M.D.
NANCY MORENO, PH.D., M.S.
UMA MUNNUR, MBBS
DEBRA MURRAY, PH.D., M.S.
AJITH NAIR, M.D.
KALINDI NARINE, M.D.
ALANA NEWELL, PH.D., M.ED.
JULIEANA NICHOLS, M.D., M.P.H.
ANDREA ONTANEDA PEREZ, M.D.
JAIME ORTIZ, M.D., M.B.A.
JENNY PAN, M.D.
BINITA PATEL, M.D.
NIHAR PATEL, M.D.
TRACY PATEL, M.D.
ROBIA PAUTLER, PH.D.
FRED PEREIRA, PH.D.
MATTHEW PESEK, M.D.
MATEI PETRESCU, M.D.
E. LEE POYTHRESS, M.D.

YASMEEN QUADRI, MBBS
SUSAN RAINE, M.D., J.D., M.ED., L.L.M.
NINO RAINUSSO, M.D.
MARK RICCIONI, D.N.P., M.S.N.
RASHMI RODE, M.D.
SCOTT ROSENFELD, M.D.
DAVID R. ROWLEY, PH.D.
SONAL SARAIYA, M.D.
SAI SARIDEY, M.D.
ARINDAM SARKAR, M.D.
GORDON SCHUTZE, M.D.
BRADFORD SCOTT, M.D.
DARYL SCOTT, M.D., PH.D.
SHWETA SHAH, M.D.
AJAY SHAH, M.D.
ASIM SHAH, M.D.
MARY SHAPIRO, M.D.
RICHARD SIFERS, PH.D.
ERIC SILBERFEIN, M.D., M.A.
GEETA SINGHAL, M.D., M.ED.
PAUL SIRBAUGH, D.O.
MARIANNA SOCKRIDER, M.D., DR.P.H.
MICHAEL SPEER, M.D.
POYYAPAKKAM SRIVATHS, M.D., M.SC.
JEFFREY STARKE, M.D.
ERIC STORCH, PH.D., M.S., M.PHIL.
MOUSHUMI SUR, M.D.
JENNIFER TAYLOR, M.D., M.P.H.
ADDISON TAYLOR, M.D., PH.D.
ELLEN TENG, PH.D., M.S.
CONNIE TRAN, M.D.
BARBARA TRAUTNER, M.D., PH.D.
IRENE TUNG, M.D.
TERI TURNER, M.D., M.P.H., M.ED.
ISABEL VALDEZ, PA-C, M.P.A.S
MADHURI VASUDEVAN, M.D., M.P.H.
KANTA VELAMURI, M.D.
LAUREL WILLIAMS, D.O.
ADAM WOLFE, M.D., PH.D., M.S.
MICHELE YORK, PH.D.

Thank you to Music as Medicine for performing during the reception



Music as Medicine is dedicated to transforming lives through the healing power of music. Our mission is to provide healing and comfort to those in need of it through the power of music. We strive to bring people together to share in the joy of music.

musicasmed.org

RESPECT
Integrity
INNOVATION
Teamwork
Excellence

Baylor
College of
Medicine

ONE BAYLOR PLAZA
HOUSTON, TEXAS ▪ BCM.EDU