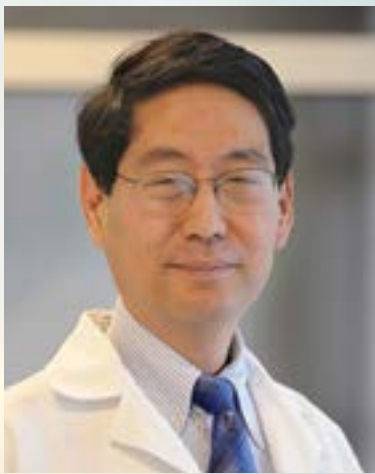




# Department of **FAMILY & COMMUNITY** MEDICINE

Health Disparities Substance Use Residency Women's Health primary care  
EDUCATION Prevention RESEARCH  
FCM NEWSLETTER Chronic Disease  
2022 Q3 Antibiotic Stewardship

U.S. News & World Report has released its latest rankings of graduate schools. Baylor College of Medicine comes in at 22nd and our primary care rating has risen to 16th in the nation. These ratings place Baylor College of Medicine in the top 15% of all medical schools. Congratulations to our FCM faculty for a job well done.



On behalf of the entire department, I extend congratulations to **William Huang, M.D.** (*left*), on his recent promotion to Full Professor with tenure. Dr. Huang richly deserves this rank, as the leader of our medical student education efforts and mentor to countless faculty. He is an exemplary leader and educator.

During this quarter, we bid a fond adieu to **Simon Whitney, M.D., JD**, who retired in January. Recognizing his value to FCM and the institution, Baylor College of Medicine has appointed Dr. Whitney as Associate Professor Emeritus, a well-deserved honor. Though Dr. Whitney retired from his family medicine practice in May 2016, his outstanding work on the Institutional Review Board system (IRBs) has received positive reviews from ethicists and medical researchers. We hope that Dr. Whitney enjoys a long and healthy retirement!



**Sara B. Rahman, MS** (*left*), FCM Department Administrator, has taken on new and exciting responsibilities in her new position at MD Anderson. Though we are saddened that she leaves FCM, we fully support her taking on the next step in her career. I wish her the very best in her new position. See page 14 for photos of her send-off bash.

Friday, March 18, was Match Day. Please see Dr. Warwick's column for important news about our new residency site in Lufkin, TX, and photos of those we welcome into our family medicine residency program. We are glad you are joining us! Read more, beginning on page 3.

Roger Zoorob, M.D., MPH, FAAFP  
Richard M. Kleberg, Sr. Professor & Chair

# Staff Spotlight

Jamie Bowles  
Senior Administrative Coordinator



Jamie Bowles joined Baylor College of Medicine in June of 2008 as an administrative coordinator for the Texas Children's Pediatric Pharmacology Research Unit. There she discovered her love of research coordination and project management. In 2012, Jamie moved to a Sponsored Programs Analyst position, coordinating grant applications and financials for the Pediatrics GI department. After her daughter was born in 2015, she began working part-time for the Environmental Health Service as a project manager/grants manager, doing both pre- and post-award work. In January 2020, Environmental Health moved from Medicine to Family & Community Medicine, and she began working in the role that she has today while also supporting EHS.



A people person, Jamie really enjoys working in team settings. She also loves problem solving and how no two grants are alike, which keeps her on her toes and provides ongoing learning opportunities.

Jamie volunteers at her kids' schools, including serving as the PTA membership chair at her daughter's elementary school. After a long days' work, she enjoys crafting and sewing. Like many weary of being COVID-bound, she looks forward to getting back on the road again!

Jamie met her husband, Wesley, while in college, and they have been married for 11 years. They have two kids, Madison, who is seven, and Grayson, who will be four in April. The family loves Chip, their crazy two year old Sheepadoodle. Some may remember Chip as a twelve-pound pup they brought home in May 2020. The pup is famous (or infamous!) for joining Jamie's Zoom meetings. He weighs 50 pounds now and is still as crazy as ever!





# Family Medicine Residency

## Hail to the Chiefs!

As is our tradition, April 1st will welcome Dr. Chelsea Mendonca and Dr. Christina Babu as Chief Residents for the academic year 2022-2023. The program remains in great hands, and leadership looks forward to working with them as we continue to strengthen the program. The change also gives way to a departure from duties by Dr. Lily Luc and Dr. Yasmin Uzamere. Their hard work and dedication during another pandemic year was greatly appreciated. Hail to the Chiefs for a job well done!



## Here we grow again!

Residency education remains a cornerstone of the department, and this upcoming academic year sees that foundation continuing to strengthen its footing. Not since the early 2000s has there been this many Family Medicine residents.

The parent residency program at Northwest Clinic remains at its full ACGME approved complement of twenty-four residents. Joining two BCM medical school graduates at Northwest Health Center will be two other Texas medical school graduates and a diverse group of DOs and MDs round out an excellent class of eight.



Eric Warwick, M.D.  
Residency Director

Eighteen months ago, Baylor College of Medicine and CHI St. Luke's Memorial Hospital in Lufkin, TX, began a journey to bring the College's first-ever rural health residency program to East Texas. Led by Dr. Roger Zoorob (Family and Community Medicine Department Chair), in concert with Dr. Ashok Balasubramanyam (Vice President of Academic Integration at Baylor College of Medicine and St. Luke's Health Chief Academic Officer) and Monte Bostwick (Market Chief Executive Officer and President of St. Luke's Health - Memorial Hospital), the development team successfully connected Houston stakeholders of Baylor St Luke's Medical Center and Texas Children's Hospital with Lufkin's CHI St. Luke's Memorial, to create a trailblazing graduate medical education program, deep in the heart of East Texas.

Following ACGME approval in November of 2021, the program was successful in NRMP's Match program and will welcome three interns into our growing "Family of Family Medicine." We look forward to our continuing growth as the Lufkin program eventually expands to its approved complement of nine total learners.

The rural residency track is funded in part by the Temple Foundation. The residency program combines urban and rural training at Baylor St. Luke's Medical Center in the Texas Medical Center, Texas Children's Hospital Pavilion for Women, Texas Children's The Woodlands, and St. Luke's Health - Memorial Hospital in Lufkin. The first year of training will take place in Houston, and the last two years will focus on the care of the underserved and vulnerable population of Lufkin and surrounding East Texas communities.

The program will accept three residents each year, with the inaugural group starting in July 2022.

"Baylor College of Medicine is delighted to partner with the CommonSpirit Health network to establish their first rural residency training program in family medicine in the St. Luke's Health East Texas market. We are proud to collaborate in training the best and brightest physicians to expand much-needed healthcare in this region of East Texas." ~ Dr. Ashok Balasubramanyam

"The opportunity to partner with Baylor College of Medicine in training physicians in our East Texas market will have a generational impact on the communities we serve. The physician needs in this rural part of our state are significant, and this program will serve as the foundation toward addressing those needs. While not every physician we train will stay in East Texas, we are confident that many will. As such, our communities will benefit from improved access and care throughout the area for many years to come." ~ Mr. Monte Bostwick

"We are immensely proud of this expansion of our family medicine program. We are confident that this training will fill a gap with much-needed primary care providers ready to see patients in the rural areas of Texas and beyond." ~ Dr. Roger Zoorob



Dr. Ashok Balasubramanyam



Mr. Monte Bostwick

## Lufkin Interns:



Ivonne Boeta  
Tecnológico de Monterrey Escuela  
de Medicina, Mexico



Karla Gonzales  
University of the Incarnate Word  
School of Osteopathic Medicine



Dorcas Omari  
University of Nairobi  
School of Medicine

# Match Day 2022

## Northwest Interns:



Jayakrishna Davlapur, D.O.  
Lake Erie College  
of Osteopathic Medicine



Stephanie de la Guardia, D.O.  
Edward Via College  
of Osteopathic Medicine



Trevor Hadley, M.D.  
Baylor College of Medicine



William Holmes, M.D.  
Baylor College of Medicine



Brendon Martin, M.D.  
Howard University  
College of Medicine



Itai Ojo, D.O.  
Touro College of Osteopathic Medicine



Sophia Rahman, D.O.  
University of the Incarnate Word School  
of Osteopathic Medicine



Ruhama Shakhawat, M.D.  
University of Texas Health Science Center  
at San Antonio



# Research

## Faculty Spotlight:

Dr. Larissa Grigoryan is an epidemiologist with a research focus on antimicrobial stewardship and urinary tract infections (UTI). She participated in pan-European antimicrobial stewardship projects in primary and acute care before joining the Baylor College of Medicine (BCM) faculty. Specifically, she carried out European Union-funded studies on outpatient use of antibiotics in 19 European countries and explored the determinants of inappropriate use of antibiotics. Her work on these two projects is cited in a European CDC public education campaign to promote the appropriate and responsible use of antibiotics. She later collaborated with co-investigators from 10 countries to evaluate the efficacy of infection control interventions in ICU settings. Her work with the European Society of Clinical Microbiology and Infectious Diseases led to the development and publication of European guidelines for treating pharyngitis. Dr. Grigoryan is a graduate of the T32 postdoctoral primary care research fellowship at BCM and VA Center for Innovations in Quality, Effectiveness and Safety. Since joining the faculty in 2014, she has continued research projects on antimicrobial stewardship with funding support from NIH, AHRQ, VA HSR&D, and investigator-initiated industry grants. In addition, she serves on the Infectious Diseases Society of America panel to update the guidelines for the treatment of UTI.

## Highlights and updates:

- FCM currently has 32 active grant projects, totaling \$5.6 million in direct costs and \$840,000 in indirect costs to support the research mission.
- Dr. Maria Mejia, Dr. Alicia Kowalchuk, and colleagues were recognized on March 31st at the ASAM 53rd Annual Conference. Their abstract "The Female Offender Re-Entry Movement (FOR-Me): Increasing access to SUD treatment," reviewed by the 2022 Annual Conference Program Planning Committee, was awarded the ASAM Abstract Submission Honorable Mention: Underserved Population.
- The department continues to experience a burgeoning interest and participation in research across mission areas. On February 19th, we held our second annual Research Day, a collaborative event with support from the Department's Office of Faculty Development, Office of Quality, Office of Diversity Equity and Inclusion, and Office of Research. Nineteen diverse presentations were delivered throughout the day, representing educational research, quality improvement, completed and works-in-progress research projects, and case reports/therapeutics.
- The Diversity, Equity, and Inclusion (DE&I) committee held the second in a series of research workgroup meetings on March 22nd, 2022. The session's topic was "Developing your research methods," led by Dr. Jacqueline Hirth. Future sessions will focus on other research-related issues such as IRB, selecting appropriate databases, and manuscript writing. The workgroup is open to anyone interested in conducting research and learning how to integrate DE&I into their research projects. The workshops consist of a short talk, a general discussion, and an open platform for questions and sharing. Please keep an eye out for announcements regarding the date and time.



Sandra Gonzalez, Ph.D., LCSW  
Director of Research

*If you are interested in sharing information about your research in a future edition of the newsletter, please contact me at [Sandra.Gonzalez@bcm.edu](mailto:Sandra.Gonzalez@bcm.edu).*

# Family Medicine Education

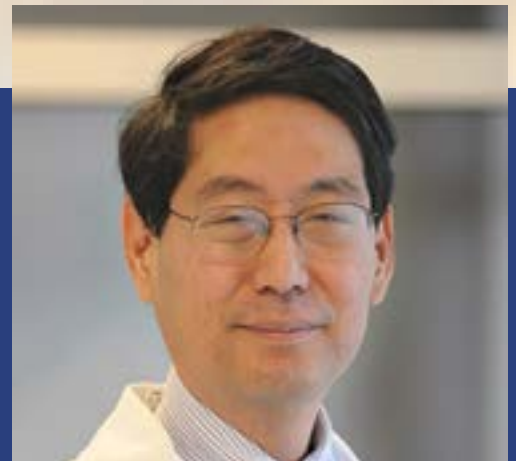
The Liaison Committee for Medical Education (LCME) granted Baylor College of Medicine (BCM) full accreditation status for another eight years! Congratulations to the Curriculum Deans of BCM and many others who prepared our school for the site visit by the LCME last September.

Congratulations to Dr. Warwick and the residency leadership for continued accreditation by the Residency Review Committee for Family Medicine of the Accreditation Council for Graduate Medical Education (ACGME)!

If you are currently a teacher of our medical students and or Family Medicine residents, you contribute to the quality of our department's educational programs and the continued accreditation of the same. Thank you for your time and effort in providing excellent teaching to our students and residents!

If you are not currently teaching our medical students or Family Medicine residents, we welcome your participation. Please contact me ([williamh@bcm.edu](mailto:williamh@bcm.edu)) to discuss opportunities to teach.

Best regards.



William Huang, M.D.  
Vice Chair, Education

# Congratulations & Kudos



Kamna Bansal, M.D.



Elizabeth Bosquez, M.D.



Maria Mejia, M.D., MPH



Jennifer Okoh, M.D.



Nihita Shah, M.D.

## FCM STAR FACULTY AWARD 2022

Baylor College of Medicine honors outstanding contributions to the College's clinical mission with Faculty Awards for Excellence in Patient Care. The Star Award recognizes the excellence of mid-career faculty members.



Our family medicine residency program earned “continued accreditation” with no citations by the Accreditation Council for Graduate Medical Education (ACGME) FM-RRC.

Congratulations to Eric Warwick, M.D.; Fareed Khan, M.D., DTMH; Rashmi Rode, M.D.; Crystal Nwagwu, M.D.; Mohamad Sidani, M.D., MS, and the entire residency team!



# Congratulations & Kudos

## Patient-Centered Medical Home

The National Committee for Quality Assurance has awarded its highest recognition to Harris Health's "medical home" model, which fosters long-term relationships between patients and physicians. Coordinated care teams provide patients with ongoing primary and specialty care. The model also extends to resources that address health-related social needs of patients.

Receiving recertification with the Patient-Centered Medical Home Recognition are seven that are staffed by Family and Community Medicine: Casa de Amigos (Hammad Mahmood, MBBS, Medical Director), Cypress (Elizabeth Bosquez, M.D.), Gulfgate (Ann Gotschall, M.D.), Martin Luther King Jr. (Jennifer Okoh, MBBS, MPH), Northwest (Lisa Danek, M.D., MBA), Strawberry (Thomas Porter, M.D.), and Vallbona (Noreen Pirzada, M.D.).



# Congratulations & Kudos



Larissa Grigoryan, M.D., PhD, has been appointed a new member of the Infectious Diseases Society of America *Misdiagnosis of Urinary Tract Infections (UTIs) in Women Technical Expert Panel (TEP)*. The Gordon and Betty Moore Foundation supports this work to improve the diagnosis of Asymptomatic Bacteriuria (ASB) rather than UTI to reduce antimicrobial overprescribing, antimicrobial resistance, and the risk of *Clostridioides difficile* infection (CDI).

Dr. Grigoryan has also been named Co-investigator of the NIH R03 grant, Quantifying the Cardiovascular and Immunologic Changes after Spinal Cord Injury to Aid Diagnosis of Clinically Meaningful Infections (03/01/2022 - 02/28/2023). Felicia Skelton-Dudley, M.D., MS, is PI.



Fareed Khan, MBBS, has been nominated to be featured on the Wall of Wellness at Northwest Health Center. The Wall of Wellness features patient champions who have improved in one or more areas in their overall wellness. These milestones may include improving A1c level, lowering blood pressure (Healthy Heart, Healthy You Program), weight loss, etc. HHS highlights its clinical champions who have helped patients reach their goals.



Ten years ago, while the medical director of HHS's Health Care for the Homeless, **Yasmeen Quadri, M.D.**, developed a plan to improve the health of the community, especially those who need it most. Her vision came to fruition on Jan. 19 when Open Door Mission Houston opened its new Respite and Recuperative Care Center. The new center houses up to 28 men experiencing homelessness, providing a safe place to heal following their hospitalization from Harris Health's hospitals, Ben Taub and Lyndon B. Johnson, to recover from illness, surgery, or accidents.



# Congratulations & Kudos

Crystal Nwagwu, M.D.



Elizabeth Bosquez, M.D.



Rashmi Rode, M.D.



## BCM Women of Excellence



Yasmeen Quadri, M.D.



Maria C. Mejia, M.D., MPH

The Women of Excellence Awards was established in 2018 to celebrate individuals who exemplify Baylor Values and demonstrate exceptional dedication to issues that affect women at Baylor College of Medicine or in the larger community. Recipients will demonstrate this commitment through:

- Leadership in addressing diversity, equity and inclusion above and beyond their generally anticipated scope of responsibilities as a staff, faculty, trainee or student.
- Documented extraordinary contributions and accomplishments within one or more of Baylor's mission areas that address issues that affect women at Baylor College of Medicine or in the larger community.



# Congratulations & Kudos



During the last quarter, Anjali Aggarwal, M.D., Stephanie Nguyen, M.D., and Rashmi Rode, M.D., were recognized by the students in the school of medicine with a Professional Educator Appreciation and Recognition (PEAR) Award. Our faculty's work so inspired a student to recognize them:

*"Dr. Aggarwal has gone above and beyond to allow us a great first year at BCM. She is a wonderful LC advisor who always answers any questions we may have and reassures us of our capabilities. I'll never forget her inviting us to dinner at her place and playing board games."*



*"Dr. Nguyen was an incredible preceptor, who went out of the way to help students enjoy learning and feel comfortable asking questions. Not only does she give insightful career advice and speak from her personal experiences, she also cares immensely about each of our precepting sessions with her. She asks about our goals for each one and really strives to help us achieve them, even if the opportunity arises on a later day. Ultimately, she's an incredible educator who empowers me to take on a provider role for each patient I see and who embodies the qualities I aspire to possess for myself."*



*"Dr. Rode has been an amazing PPS facilitator. She is incredibly knowledgeable and helpful. She makes me feel safe as a student. I don't worry about making mistakes around her because I know she will teach me in a judgment-free manner. Dr. Rode has made my PPS experience special. She's someone I'd feel blessed to train under as a resident. We need more people like Dr. Rode at Baylor."*

Congratulations!



Professional Educator Appreciation  
and Recognition (PEAR) Award

Anjali Aggarwal

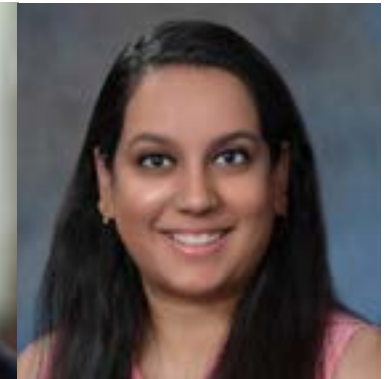
Stephanie Nguyen

Rashmi Rode

For teaching, challenging, inspiring and empowering students!

Baylor College of Medicine, March 2022

# Congratulations & Kudos



Harris County Academy of Family Physicians named their new board members. FCM is proud to recognize these department faculty who received offices for 2022:

Irvin Sulapas, M.D.  
Rashmi Rode, M.D.  
Arindam Sarkar, M.D.  
Chelsea Mendonca, M.D.

President  
President-Elect  
At-Large, Second Year  
Resident Board Member

Osvaldo Alquicira, a research coordinator under Dr. Grigoryan, was recently accepted to the University of Houston College of Medicine M.D. program. Congratulations, Osvaldo!



Soujanya Challa, M.D., was honored for her patient satisfaction scores at MLK Health Center, a part of the Harris Health community. A patient wrote:

*"Hello. I wanted to leave my feedback on the doctor. She was great, she was very helpful, very caring, she cared about all of my needs, and she explained everything and she make sure that I got my referrals I needed for me to follow up with my psychiatrist. She's awesome and she really cares about people and I can tell. She just doesn't do it for a check. She actually loves people and loves caring for people. She's a great person and may God bless her and her family."*



Bharat Joshi, M.D., and Sanjana Bhattarai, M.D. (left), have been named Diplomates of the American Board of Obesity Medicine.

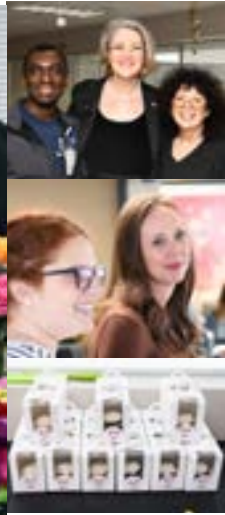
Namrata Walia, M.D., MPH (right), a third-year T-32 postdoctoral fellow, recently completed the requirements for her Master of Public Health degree from the UTHealth School of Public Health.







# Sara's Send-off Bash





# Happenings



Noreen Pirzada, M.D., medical director of Harris Health's Vallbona Health Center, and Nathan Bender, M.D., medical director of El Franco Lee Health Center, were interviewed by the *Houston Chronicle* for "Returning to Routine Care and Health Screenings are Not Only Safe, They Could Save Your Life."

"There's a need for a public health awareness media campaign to raise awareness about regular medical checkups with the doctors while wearing masks and fully vaccinated," Pirzada explains. "Routine screenings for the diagnosis of cancer are very important in order to pick up the cancer at an early stage."

The number of "excess deaths related to the COVID pandemic will be large," Pirzada predicts. "The primary reason is people are not going to their primary care providers for screenings, regular checkups, and medication management. This is especially pertinent for diabetes, hypertension, endocrinology disorders, mental health issues, and oncology cases where prompt and early screening makes a big difference in the patient's life span and quality of life."



If one of your 2022 resolutions was to start a new exercise routine, Irvin Sulapas, M.D., recommends making small changes to help you stick to your goal.

This graphic was posted on the BCM Facebook page.

Dr. Sulapas was also interviewed for the BCM Momentum Blog, "[Don't stay thirsty, my friends.](#)"

"The general rule of thumb is to make sure you are on top of your thirst," Sulapas said. That means that if you're thirsty, your body is telling you that you're already dehydrated.



# Happenings



On February 25, Sara B. Rahman, MS, was decked out in her western gear for Go Texan Day, the unofficial kickoff to the Houston Livestock Show and Rodeo.



# Happenings



On February 22, faculty and residents ran the HCHD Foundation 19th Annual TexasMedRun to raise money for the Food Farmacy. Our group, team “TAM-sulosin,” placed 3rd in fundraising, with \$1375!



*Left:* Drs. Rashmi Rode, Nadir Mulla, Ramon Diez-Barroso, Lisa Thoyakulathu, and Irvin Sulapas

*Right:* Drs. Chad Scott, Crystal Nwagwu, Irvin Sulapas, and Nadir Mulla



On January 29, Adriana Rangel, MPH, and Maria Mejia, M.D., MPH, participated in a lung cancer screening and tobacco cessation community outreach event attended by approximately 500 residents. Dia de La Mujer Latina organized the Health Fair at St. Paul's (San Pablo) Episcopal Church.



Rhonda Patterson, Senior Coordinator - Business Operations, bids Melissa Perez (*left*) a fond adieu at a farewell lunch. Melissa served the patients at the Kirby Clinic for three years. Providers, co-workers, and patients will miss her as they send her best wishes on her new adventure.



# Happenings

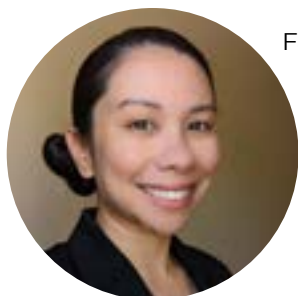


Our physicians at HHS Same Day Clinics celebrated Doctors Day in March. To all our FCM physicians, we wholeheartedly Thank You! (Monroe and Sunset Heights Same Day Clinics)



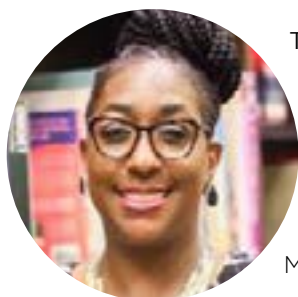
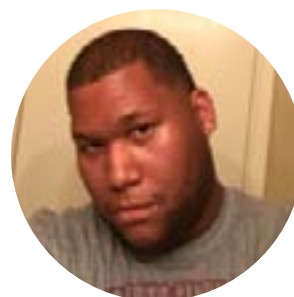
Joining Fareed Khan, MBBS, FCM Vice Chair of Community Health (*far left*), Malvika Juneja, M.D. (*second row, far right*), and Jonnae Atkinson, M.D. (*back*), are Drs. Russell, Lu, Small, Ortiz, and Chen. The group gathered in January to explore ways to improve communication with Harris Health and other affiliates.

# Welcome to FCM



**Fara Julienne Abordaje** comes to the department from MD Anderson, where she created instructional materials and performed appointment scheduling in Epic. Before that, she was a designer for KIAH-TV CW39, where she produced graphics and created and organized web content. She is a Communications Associate on the admin team. Fara is the go-to person for the department's newsletter and web updates.

**Duane Boudreaux** joined the department from Texas Children's Hospital, where he was a Patient Access Representative and patient transportation. Before this, he worked at the front desk/Pbx Operator at Dr. Joseph Gathe, Jr's office in Houston. Duane is a temp with Baylor Family Medicine.



**Tracy Fletcher-Davies, BSN, MSML, RN**, earned her Bachelor of Science in Psychology with honors from Lamar University (2002), her Bachelor of Science in Nursing with honors from the University of Texas School of Nursing at Houston (2006), and her Master of Science in Management and Leadership from Western Governors University (2019). She earned a Certificate in Innovative Leadership in Public Administration from Georgetown University in 2021. Tracy is the Nurse Manager at Kirby Family Medicine Clinic.

**Majd Jwied, M.D.**, earned her medical degree from the University of Jordan in 1993 and completed residency training at Brown University Memorial Hospital of Rhode Island (2006). Before coming to Baylor, Dr. Jwied was Chair of the Medicine Department at HCA Houston Healthcare West, where she also had a solo IM practice. She sees patients at Casa de Amigos Health Center.



**Jay Orr, D.O.**, earned his medical degree from the Edward Via College of Osteopathic Medicine in Spartanburg, SC (2016) and completed training in family medicine at Virginia Commonwealth University in Fairfax. He joined the department from BW Primary Care, where he was a staff physician for those 12 years and older. Dr. Orr sees patients at Northwest Health Center.

# Welcome to FCM

**Bernadette Oakley**, a Licensed Vocational Nurse, received her training at Lafayette Regional Vocational Technical Center in Lafayette, LA. She comes to the department from Baylor St. Luke's Senior Care Clinic, where she triaged patients, scheduled appointments, and made referrals. She works at Healthcare for the Homeless-Houston.

**Cathey Shyne** is a Certified Medical Assistant, and has over ten years of experience in Healthcare, Case Management, Counseling, and Social Services. Her prior employment was with St. Luke's Hospital, and she has worked at Sugarland Surgical Center and Memorial Hermann Hospital. She works at Healthcare for the Homeless-Houston.

**Charnel Anderson** is an RN II with the private practice River Oaks Clinic. Prior to joining us, Charnel worked for Alvin Independent School District. At Baylor College of Medicine, Charnel hopes to share what she has learned as well as learn a lot more, all through serving others.

**Wendy Hammerman** is a Nursing Supervisor with the private practice Main Street Clinic. She has worked at BCM for almost 30 years in all different capacities, most recently in the Neurology clinic with multiple sclerosis patients. She hopes to learn how the community and family medicine clinic functions and be able to grow the clinic in a positive way.

**Kormeakar Freeman** is a Medical Assistant II with the Kirby Clinic private practice. Prior to joining us, Kormeakar worked for the City of Houston Health Department in Employee Health. At Baylor College of Medicine, Kormeakar hopes to become a great asset and team member.





# Publications

Laytner LA, Trautner B, Grigoryan L. [Letter to the Editor](#): Non-biomedical factors affecting antibiotic use in the Community. *Clinical Microbiol Infect*. 2022 Feb 11

Valentine-King M, Van J, Hines-Munson C, Dillon L, Graber CJ, Patel PK, Drekonja D, Lichtenberger P, Shukla B, Kramer J, Ramsey D, Trautner B, Grigoryan L. [Identification of Novel factors associated with inappropriate treatment of asymptomatic bacteriuria in acute and long-term care](#). *Am J Infect Control*. 2022 Feb 11

Valentine-King MA, Trautner BW, Zoorob RJ, Germanos G, Hansen M, Salemi JL, Gupta K, Grigoryan L. [Analysis of recurrent urinary tract infection management in women seen in outpatient settings reveals opportunities for antibiotic stewardship interventions](#). *ASHE*. 2022 Jan 17

Ecker A, Berenson AB, Gonzalez SJ, Zoorob R, Hirth JM. [Depression among medical students in the United States during the COVID-19 pandemic: The role of communication between universities and their students](#). *Disaster Med Public Health Prep*. 2022 Mar 4;1-21

Faustinella F. [Remembrance](#). *JONAH magazine*. 2022 Jan.

Fernandes P, Wang K, Timmerman J, Reyes A, Holmes F, Olaleye OA, Salihu HM, Moerchen VA, Belcher HME, Copeland-Linder N, Noble CA, Vamos CA, Armstrong A, Waters CR, Long-White D, Brown C, Reddy MM, Kuo A. [Success of Maternal and Child Health Pipeline Training Programs: Alumni Survey Results](#). *Matern Child Health*. 2022 Feb 22

Faustinella F. [Vivid tales of war and miracles](#). *Roanoke Rambler*. 2021 Dec.

Hirth JM, Eboreime KA, Cofie LE, Rupp FE, Berenson AB. [Human papillomavirus dose reminder preferences among parents from a diverse clinical sample: a qualitative study](#). *Hum Vaccin Immunother*. 2022 Feb 18:1-6

Salihu HM, Yusuf Z, Dongarwar D, Aliyu SH, Yusuf RA, Aliyu MH, Aliyu G. [Development of a Quality Assurance Score for the Nigeria AIDS Indicator and Impact Survey \(NAIIS\) Database: Validation Study](#). *JMIR Form Res*. 2022 Jan 28;6(1):e25752

Garcia BY, Dongarwar D, Salihu HM. [Hispanic Ethnicity, Nativity and the Risk of Stillbirth](#). *J Immigr Minor Health*. 2022 Jan 19

Marathe A, Song B, Sulapas I, Jayaram P. [Doppler Ultrasound Utility in Intraneural Ganglion Cyst Diagnosis](#). *Am J Phys Med Rehabil*. 2022 Jan 19. Epub ahead of print. PMID: 35067559.

# Publications

Usman F, Tsiga-Ahmed FI, Farouk ZL, Gambo MJ, Mohammed AD, Mohammed AM, **Salihu HM**, Aliyu MH. [Perinatal factors associated with admission to neonatal intensive care unit following cesarean delivery in Kano, northern Nigeria](#). *J Perinat Med*. 2022 Jan 19.

Ribas Roca J, Everett T, Dongarwar D, **Salihu HM**. [Racial-Ethnic Disparities in Benzodiazepine Prescriptions for Anxiety in US Emergency Departments](#). *J Racial Ethn Health Disparities*. 2022 Jan 6

Iiyasu Z, Galadanci HS, Musa AH, Iiyasu BZ, Nass NS, Garba RM, Jibo AM, Okekenwa SC, **Salihu HM**, Aliyu MH. [HIV self-testing and repeat testing in pregnancy and postpartum in Northern Nigeria](#). *Trop Med Int Health*. 2022 Jan;27(1):110-11

Sanchez Mejia AA, Cambronero N, Dongarwar D, **Salihu HM**, Vigil-Mallett MA, Garcia BY, Morris SA. [Hospital outcomes among infants with interrupted aortic arch with simple and complex associated health defects](#). *Am J Cardiol*. 2022 Mar 1;166:97-106

Dybbro E, Dongarwar D, **Salihu HM**, Ihekweazu FD. [Trends and Disparities in Pediatric Nonalcoholic Fatty Liver Disease-Associated Hospitalizations in the United States](#). *J Pediatr Gastroenterol Nutr*. 2022 Jan 18

Aliyu MH, Sani MU, Ingles DJ, Tsiga-Ahmed FI, Musa BM, Ahonkhai AA, **Salihu HM**, Audet CM, Wester CW. [Building Research Capacity in HIV and Noncommunicable Diseases in Africa: A Mentorship and Leadership Workshop Report](#). *J Contin Educ Health Prof*. 2022 Jan 1;42(1):e106-e110

Dongarwar D, Garcia BY, Miller K, **Salihu HM**. [Assessment of hospitalization rates, factors associated with hospitalization and in-patient mortality in pediatric patients with cystic fibrosis](#). *J Natl Med Assoc*. 2022 Jan;113(6):683-692.



# FCM Research Day

## Educational Research

Atkinson J, Barning K, Kuncharapu I, Nietfeld L, Huang W. Family medicine clerkship student and preceptor perceptions on the use of a revised feedback card.

Rode R. Procedures in Primary Care elective: An innovative way to engage and train medical students.

Xiong Y, Scott C, Nguyen T. Point of Care Ultrasonography (POCUS) at the Baylor College of Medicine Family Medicine Residency Program.

McLane L, Allen K, Bailey D, Caskey J, Ho T, Warwick E. Developing a rural residency track: Lessons learned and future direction.

## Research/QI Completed

Hirth J, Valadez C. The relationship between substance use and pregnancy risk by race/ethnicity.

Valentine-King M. Determining an outpatient antibiogram and predictors of ciprofloxacin and trimethoprim-sulfamethoxazole resistant urinary tract infections.

Benjamin R. Multicomponent intervention to promote colorectal cancer screening in a Federally Qualified Health Center serving a homeless population.

## Therapeutics/Case Reports

Le J. Upper extremity histoplasma capsulatum treatment with isavuconazole.

Faustinnella F. Abdominal pain, nausea, and vomiting are not always symptoms of a GI problem: The power of observation in clinical medicine.

Yang D. Using Point of Care Ultrasound for superficial lesions.

## Research/Work in Progress

Mahoney W. Non-physician medical worker stress and SARS CoV-2 infection prevention.

Laytner LA. Perspectives of a Community Advisory Board (CAB) on non-prescription antibiotic use by patients served by public primary care clinics.

Walia N. Identifying provider barriers to implementing screening, brief intervention, and referral to treatment for substance use in primary care.

## Other Work in Progress

Bhattarai S. Assessing COVID 19 pandemic and body weight in community clinic.

Gutierrez J, Walia N. Medical care utilization and alcohol use during floods and COVID-19 pandemic.

Bansal K, Nambi P. Guideline implementation at Harris Health System; Screening for abdominal aortic aneurysm.

## Other Work in Progress

Nambi P. Improving asthma patient outcomes by providing access to physicians and medicines during Covid-surge related clinic closure.

Majd C, Barning K, Chao M. Undiagnosed and undertreated patients with dDepression during the pandemic within the Harris Health System.

Mendonca C. Standardizing care of women in reproductive age.

## Education and QI

Waqar A. Implementation of nurse provided education in patients with prediabetes at a community health center.

Thoyakulathu E, Uzamere Y, Babu C, Jose J. Familias Contra Diabetes.

Babu C, Mendonca C, Nwokocha C, Luc L, Nwagwu C. Longitudinal OB skills project: Improving resident confidence in basic OB skills.



# Presentations

## **5<sup>th</sup> Annual Texas Medical Center Antimicrobial Resistance and Stewardship Conference**

January 19-21, 2022

Valentine-King MA, Hansen MA, Zoorob R, Danek L, Willis SE, Muldrew K, Atmar RL, Chou A, Trautner BW, Grigoryan L. Predictors of antibiotic resistance to commonly prescribed agents for urinary tract infection in an outpatient setting in the United States.

Laytner LA, Khan FM, Raphael JL, Street RL, Paasche-Orlow M, Chen P, Alquicira O, Salinas J. Perspectives of a community advisory board on non-prescription antibiotic use by patients served by public primary care clinics.

Grigoryan L. Patient, health system, and clinical encounter characteristics associated with use of antibiotics without prescription In the United States.

## **2022 STFM Conference on Medical Student Education**

Jan 26-28, 2022

Huang W, Atkinson J, Barning K. Medical student mistreatment and the role of the family medicine clerkship director.

Atkinson J, Barning K, Kuncharapu I, Nietfeld L, Huang W. Family medicine clerkship student and preceptor perceptions on the use of a revised feedback card.

Huang W, Rose S, Kung D, Purkiss J, Ismail N. Benefits of an effective collaboration with curriculum deans and other clerkship directors.

Aggarwal A, Zhou Y, Bansal K, Nambi P, Lee E, Zoorob R. Engagement of medical students via electives to create interest in family medicine residency.

Juneja M, Slater B. Curriculum design strategies essential to effectively teach a rising generation of physicians.

## **11<sup>th</sup> Annual International Conference on Emerging Infectious Diseases**

Mar 6-9, 2022

Mahony WL, Rupp RE, Gonzalez S, Zoorob R, Hirth JM. Non-physician medical worker stress and SARS COV-2 infection prevention.

## **American Society of Addiction Medicine 53<sup>rd</sup> Annual Conference**

Mar 31 - Apr 3, 2022

Mejia MC, Gill E, Kowalchuk AA, MacMaster S. The Female Offender Re-Entry Movement (FOR-Me): Increasing access to SUD treatment. \*ASAM Abstract Submission Honorable Mention: Underserved Population

**“The greatest disease in the West today is not TB or leprosy; it is being unwanted, unloved, and uncared for. We can cure physical diseases with medicine, but the only cure for loneliness, despair, and hopelessness is love.**

~ Mother Teresa

*The Family and Community Medicine Quarterly Newsletter* is a publication of the Department of Family and Community Medicine at Baylor College of Medicine.

To be added to the *Newsletter* email listserve, please email [Joan Newell](#).