

Hernia Surgery

MESH REPAIR

MICHAEL E. DeBAKEY
DEPARTMENT OF SURGERY

Hernia mesh is a flat, screen-like product that provides additional support to the abdominal wall, thereby preventing organs and tissues from pressing back through a hernia repair. Mesh is made of permanent, semi-permanent, or absorbable materials. The type of mesh used during a hernia repair depends on the needs of the hernia. Your surgeon will weigh its benefits against the risks, taking into consideration your specific medical conditions and surgical factors to determine whether your hernia repair will require a mesh.

RECURRENCE

Any hernia repair carries a small chance of recurrence (having the hernia come back). To help decrease this risk, we recommend that patients avoid lifting, pulling, or pushing more than 10 pounds for the first 6 weeks after surgery. Mesh also helps to prevent hernias from coming back. However, there is still a risk of hernia recurrence.

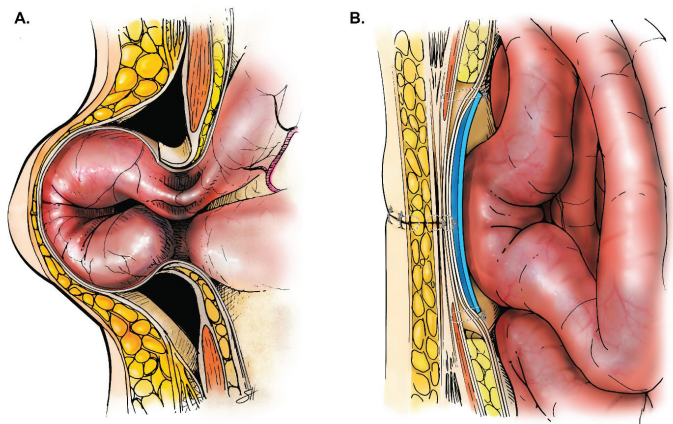
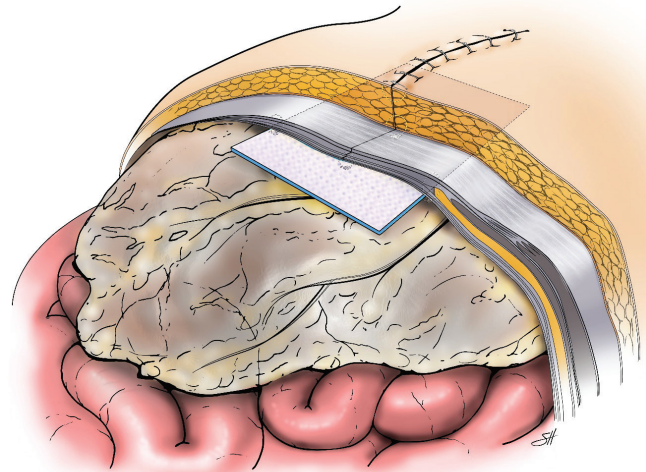
RISKS OF MESH

The use of mesh carries a small risk of infection because it is a foreign body. Even without mesh, infections at the surgery site may occur. There is also a very small risk of erosion of the mesh into other organs. These complications may arise due to multiple factors including surgical technique and mesh type, as well as patient anatomy, presence of inflammation, infection or other body reaction, a history of previous surgeries and overall health status.

Keep in mind that these complications are uncommon and are more commonly linked to mesh used in non-hernia operations.

DOES MESH CAUSE PAIN?

Chronic pain or infection has sometimes been linked to the presence of mesh within



the body. However, these symptoms are not necessarily related to the mesh. Patients with these conditions should seek medical attention. Keep in mind that removal of the mesh may not necessarily improve these symptoms and could potentially worsen a patient's condition. In addition, the American Hernia Society acknowledges that "there is no convincing evidence that mesh placement can cause autoimmune or allergic reactions."

IS WHAT YOU HEAR IN THE MEDIA ABOUT MESH TRUE?

You may have seen commercials on TV or radio about mesh problems. Some refer to mesh lawsuits or mesh recalls. Typically, these claims relate to "mesh failures." Most of the time, "mesh failure" is the same as a hernia recurrence (the hernia came back after a mesh repair). With any hernia repair, there is a possibility of recurrence at some point in the future. A mesh repair statistically decreases the risk of recurrence, however, it cannot negate it completely. It is usually not the mesh that is solely at fault; rather, many different factors can cause hernias to come back.

baylormedicine.org



Follow us on @/baylormedicine

Baylor
Medicine

We Are
Houston
Medicine