

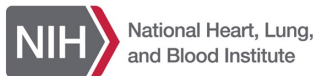


Na Li, PhD
Associate Professor
Section of Cardiovascular Research
Dept. of Medicine, BCM
Office: 528D; Lab: 508C
Email: nal@bcm.edu
www.naliphd.com @naliphd



- Co-Chair, Education and Teaching Committee, CVRI
- Co-Director, GS-DD_6403: Advanced topics in cardiac pathophysiology and disease

Funding Support & Current Projects



National Heart, Lung,
and Blood Institute

R01HL136389 (Gasdermin D/IL-1 β nexus in pathogenesis of atrial fibrillation (Afib))
R01HL163277 (Fibroblast inflammasome activation promotes atrial myopathy)
R01HL147108 (Mechanistic link between chronic kidney disease and Afib)



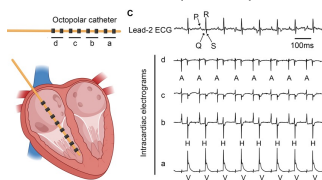
American
Heart
Association.

AHA Established Investigator Award
(TANGO2 arrhythmic disorder)

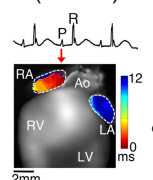
AHA Postdoc fellowship (Yue Yuan)
(Clonal Hematopoiesis & Afib development)

Specialized Experimental Techniques

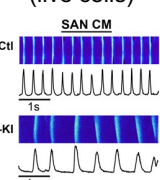
Programmed electrical stimulation (in vivo)



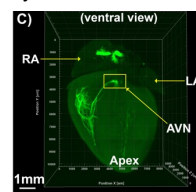
Optical mapping (ex vivo)



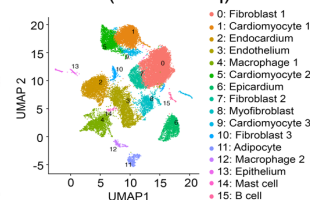
Ca²⁺ imaging (live cells)



Cardiac conduction system visualization

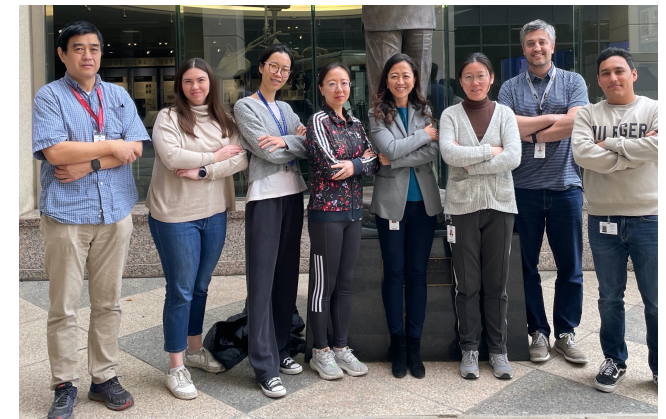


Cell-cell interaction (snRNA-seq)



Selected publications

1. Enhanced Cardiomyocyte NLRP3 Inflammasome Signaling Promotes Atrial Fibrillation. Circulation. 2018.
2. NLRP3 inflammasome is a key driver of obesity-induced atrial arrhythmias. Cardiovascular Research. 2021.
3. Inflammatory signalling in atrial cardiomyocytes: a novel unifying principle in atrial fibrillation pathophysiology. Nature Review Cardiology. 2022.
4. Downregulation of FKBP5 promotes atrial arrhythmogenesis. Circulation Research. 2023.



- ♥ Cardiac electrophysiology studies at various levels (cellular, tissue, and whole animal)
- ♥ Mechanistic and translational studies to under the mechanisms of cardiac arrhythmias
- ♥ Close collaboration with physicians and physician-scientists
- ♥ AAV-mediated tissue-specific gene therapy
- ♥ Utilization of novel techniques (snRNA-seq, ST, light-sheet scanning, etc.)

