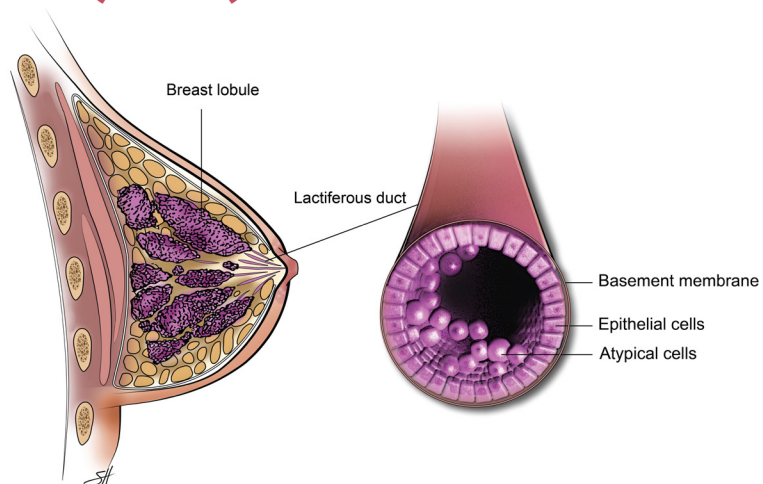


MICHAEL E. DeBAKEY
DEPARTMENT OF SURGERY

Ductal Carcinoma In Situ (DCIS)

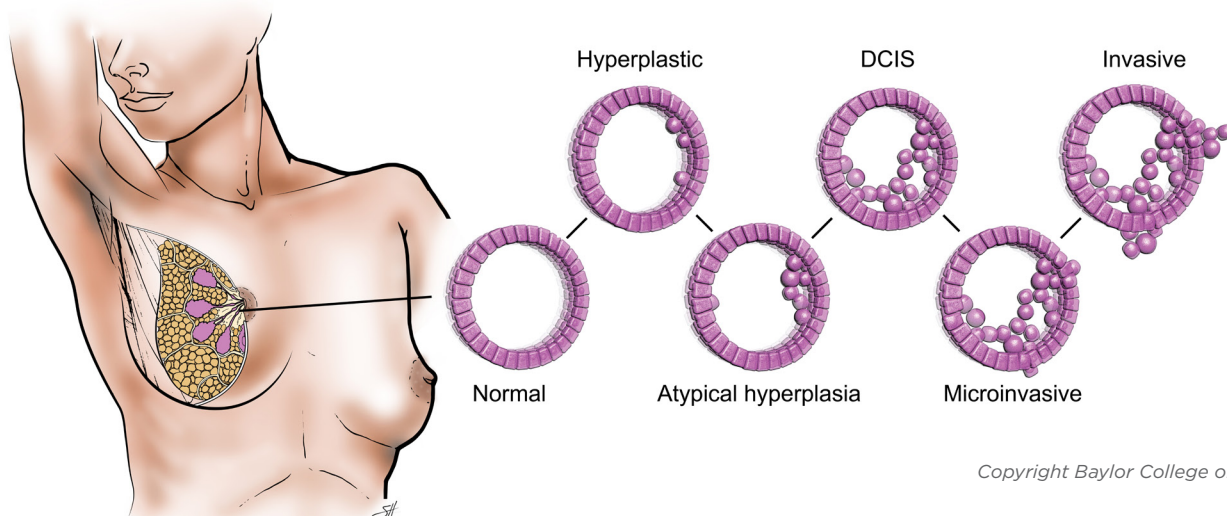
Ductal carcinoma in situ (DCIS) happens when abnormal cells get stuck in the lining of the ducts of the breast but haven't spread into the breast tissue yet.



Copyright Baylor College of Medicine

Atypical Ductal Hyperplasia/Atypical Lobular Hyperplasia

Atypical ductal hyperplasia and atypical lobular hyperplasia are non-cancerous conditions that involve abnormal cell growth in the breast ducts or lobules. Although these conditions are not cancerous themselves, they may put you at an increased risk for developing breast cancer in the future. Close monitoring and regular check-ups are recommended.



Copyright Baylor College of Medicine

Baylor
Medicine

We Are
Houston
Medicine

