

# Tips for Installing the UpToDate for Anki Add-on on Your Desktop

Super-charge your study habits with the UpToDate® for Anki Add-on and take your flashcards to the next level. Choose topics that include introductions to conditions and necessary background to contextualize subjects for students. To start using the UpToDate for Anki Add-on, follow the three easy steps below.



**Please note:** To access the UpToDate for Anki Add-on, you will need an UpToDate subscription either provided through your institution or purchased individually. Please check with your organization to see if it provides access to UpToDate or visit <https://store.uptodate.com> to purchase a personal subscription.

## Step 1: Download and open the latest version of Anki

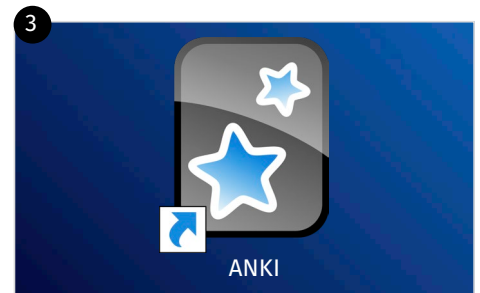
UpToDate for Anki Add-on integration works with Anki versions 2.1.47 and later.



Visit <https://apps.ankiweb.net> and select Download.



Select the appropriate operating system version to download and install Anki.



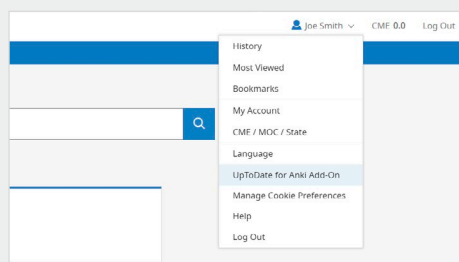
Double-click the Anki icon from your desktop.

## Step 2: Download the UpToDate for Anki Add-on

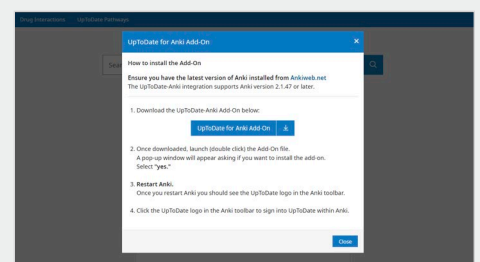
**Please note:** To access the UpToDate for Anki Add-on, you will need to have an existing UpToDate account (either provided through your organization or purchased as a personal subscription).

Log in to UpToDate.

Visit [uptodate.com/login](https://uptodate.com/login) to log in with your existing UpToDate credentials. If you do not have existing credentials, please visit [uptodate.com/online](https://uptodate.com/online) while connected to a computer at your organization and click Register; or purchase a personal subscription at <https://store.uptodate.com>.



Select the My Account drop-down in the top right navigation and select UpToDate for Anki Add-on.



Select the blue UpToDate for Anki Add-on button to download and install the add-on to your computer. Click Yes in the *Install Anki add on* pop-up to accept the download.

## Step 3: Restart Anki

- Close out of Anki and restart it.
- Once Anki has restarted, the UpToDate logo will appear in the top bar.
- Click the UpToDate logo and sign in using your UpToDate credentials.

