

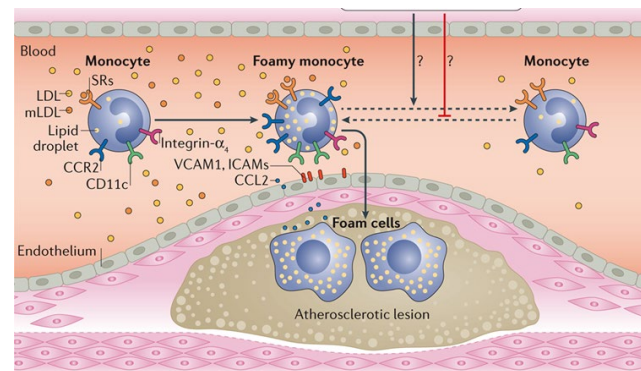


Huaizhu Wu, MD
Associate Professor
Medicine
Baylor College of Medicine
hwu@bcm.edu

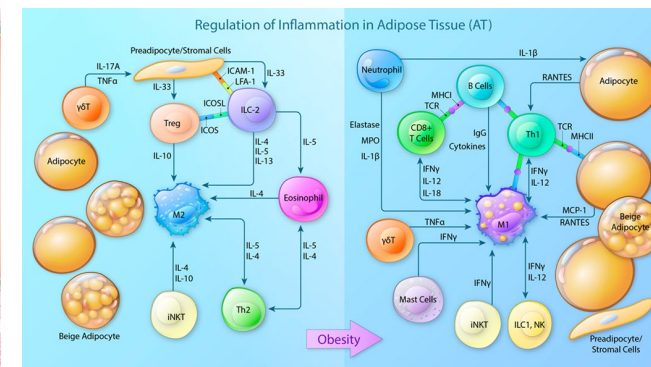
Christie M. Ballantyne, MD, FACP, FACC
Professor of Medicine
Chief, Section of Cardiovascular Research
Director, Center For Cardiometabolic Disease Prevention
Baylor College of Medicine
cmb@bcm.edu

Wu/Ballantyne Lab

Monocyte in atherosclerosis



Adipose immune cells



Research Interests:

Basic and translational research

- Immune response and inflammation in adipose tissue with obesity;
- Monocytes, lipoproteins, and atherosclerosis

Research Expertise:

- Phenotype immune cells in blood and tissues;
- Study immune cell functions in mice and ex vivo;
- Analyze atherosclerosis in mice

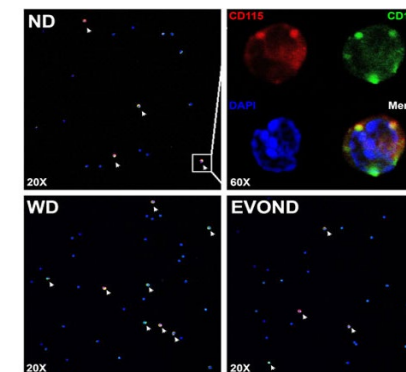
Research Resources:

- Mouse models for studies of atherosclerosis, inflammation, and/or metabolism;
- Access to human blood and adipose specimens

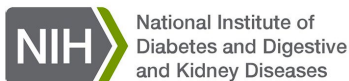
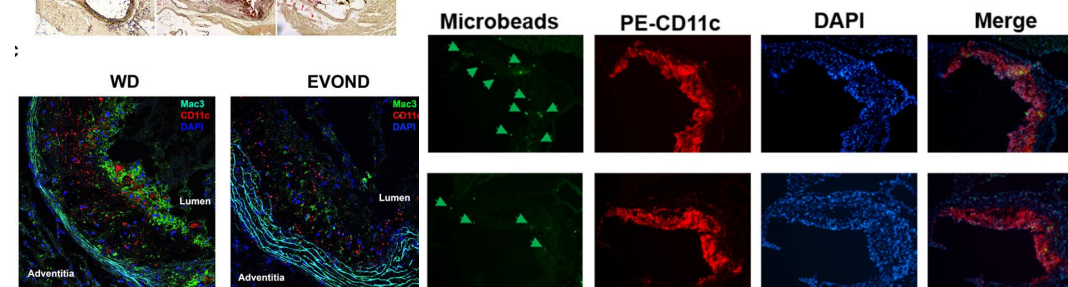
Mouse atherosclerosis



Monocyte adhesion



Monocyte trafficking



NIH: NIDDK R01; NIA R01
AHA: TPA